

Children & Young People's Strategic Partnership (CYPSP)

Pauline Leeson
Chief Executive
Children in Northern Ireland (CiNI)



Children and Young People's Strategic Partnership

- Joined up at point of Delivery
- Integrated Commission and Planning
- Children & Young People's Plan 2011-2014



Children's Strategy – Our Children and Young People – Our Pledge- 2006- 2016



More Information

Children and Young Peoples Strategic Partnership

www.cypsp.org



@cypsp

THANK YOU!



Southern Area Outcomes Group

Paul Morgan

Director Children's Services, Southern Health
and Social Care Trust

Chair Southern Area Outcomes Group



Key Themes



Early Intervention



Integrated Planning



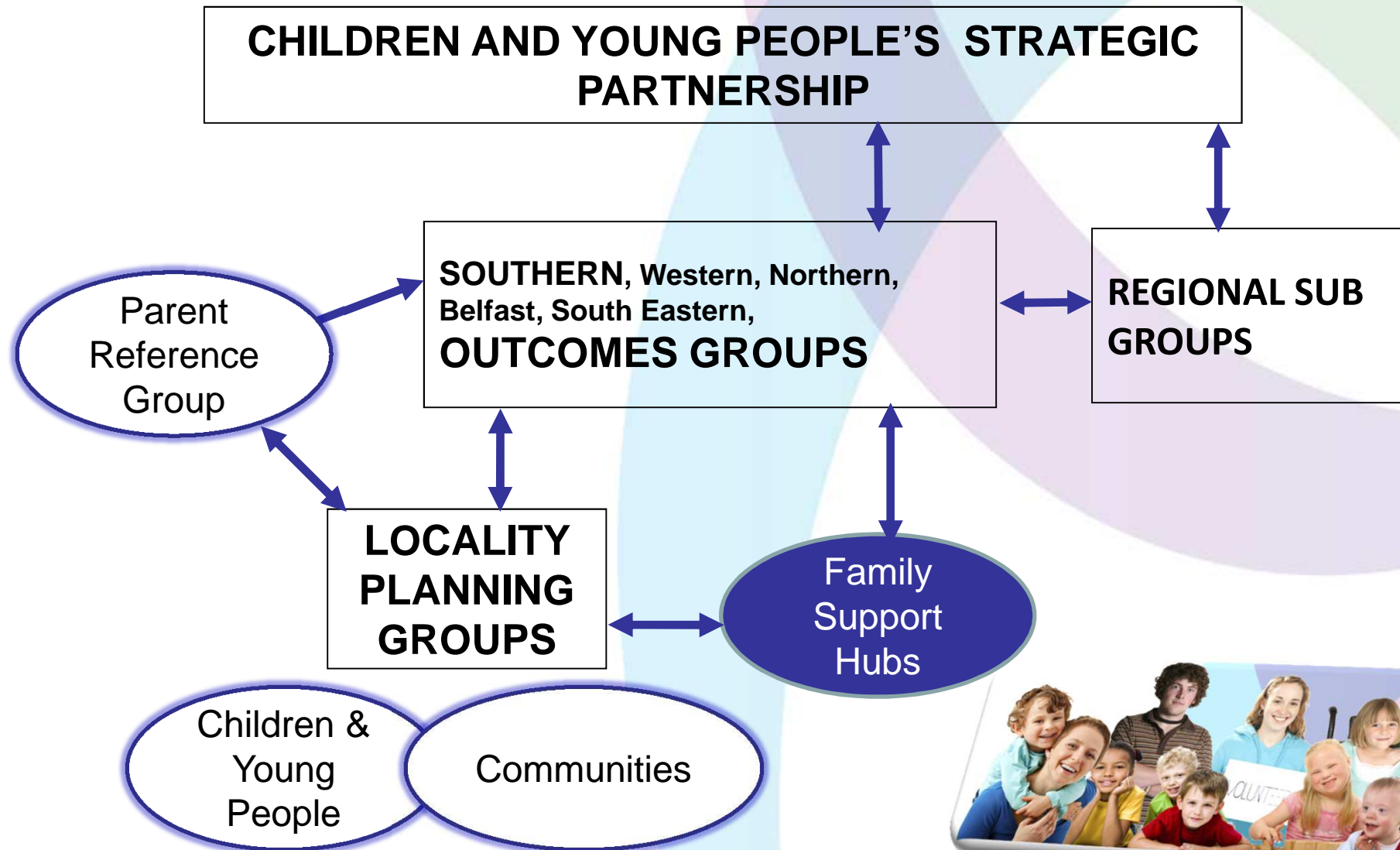
Optimisation of Resources



Communicating with Government



Structures



SOUTHERN OUTCOMES GROUP MEMBERSHIP

Statutory – HSC Trust, HSC Board, SELB, PHA, PSNI, DSD, NIHE, Youth Justice Agency, Armagh and City DC, Craigavon DC, Newry and Mourne DC, Dungannon and South Tyrone BC, Banbridge DC

Voluntary – Gingerbread, Voypic, Barnardos, Parenting NI

Community – South Down FHI, South Armagh Women and Family HI, Arc

BME – Craigavon Inter-Cultural Programme, Early Years Toy Box

Links – LCG, Child Care Partnership



Achievements

- Partnership working
- Involving Children and Young People
- Parent Reference Group
- Family Support Hubs
- Locality Planning Groups
- Service Development



Current Priority Outcomes

To ensure better co-ordination and collaboration across agencies in the Southern area.

To deliver on better outcomes for children and young people.



Current Priority Outcomes

To ensure that all parents/carers receive the help and support they need to empower them to parent thereby ensuring all children get the best possible start in life, have good health and well being.



Current Priority Outcomes

To ensure the involvement of children and young people and parents

To ensure good relations/equality and diversity



Next steps



www.cypsp.org



@cypsp



Armagh Locality Planning Group

Achievements & Emerging Needs

Rachel Long,
Child and Parent Support (CAPS)
Chair of Armagh Locality Planning Group
May 2014



What do they do?

The role of each locality planning group is to

be a **partnership** between children and young people, families, communities and representatives of agencies at locality level at a geography that makes sense to the local community

draw up a locality **plan** to address priorities identified through **outcomes based planning** and to

mobilise local resources from the statutory, voluntary and community sectors to address these priorities – as part of the Children and Young People's Plan

Focus on
Early
Intervention
0-18



Achievements 2010/2014

- June 2010- Armagh Locality Planning group was launched
- August 2010- Family fun and Information day 300 families attending
- November/December- Community/Young people's participants/pizza evenings (x 5) on how to improve outcomes in the area they live in
- December- Audit of need carried out and Draft Action Plan complete
- February 2011- Equality awareness workshop for Young People
- November 2011- First Aid training delivered to 12 Young People in Spring



Achievements 2010-2014

Intergenerational Project – April 2011



Achievements 2010/2014

- September 2012 & 2013- Involvement of young people in the CYPSP consultation on priority areas



Achievements 2010-2014

Volunteer Fair- September 2013



Achievements 2010-2014

- Toothfairy event in Keady October 2013
- 2ND on due to take place on the 19th June



EMERGING NEEDS



Emerging needs

- Mental Health- Providing hope, vision for the future and positive images
- Waiting list of counselling within schools
- Young People and Anger Issues (due to parental separation etc)
- Poor GCSE attainment- Number of year 12 not getting 5 GCSE's



Emerging needs

- Children and Young People exposed to domestic violence
- Hidden Harm- YP with parents who abuse substance
- Makaton being more widely available from birth right through/Train parents to deliver assist and makaton
- Attendance issues at primary and post primary
Camhs- children missing appointments then have to re-refer as new to renew as these children most in need



Emerging needs

- Less than 85% school attendance
(Early Intervention pilot/mapping existing services)
- Access to activities for Young People with a disability
- More on going Intergenerational projects



CYPSP Locality Planning officer in Southern Area;

Julie Bolton
Towerhill
Armagh

Contact number - 07725232566

