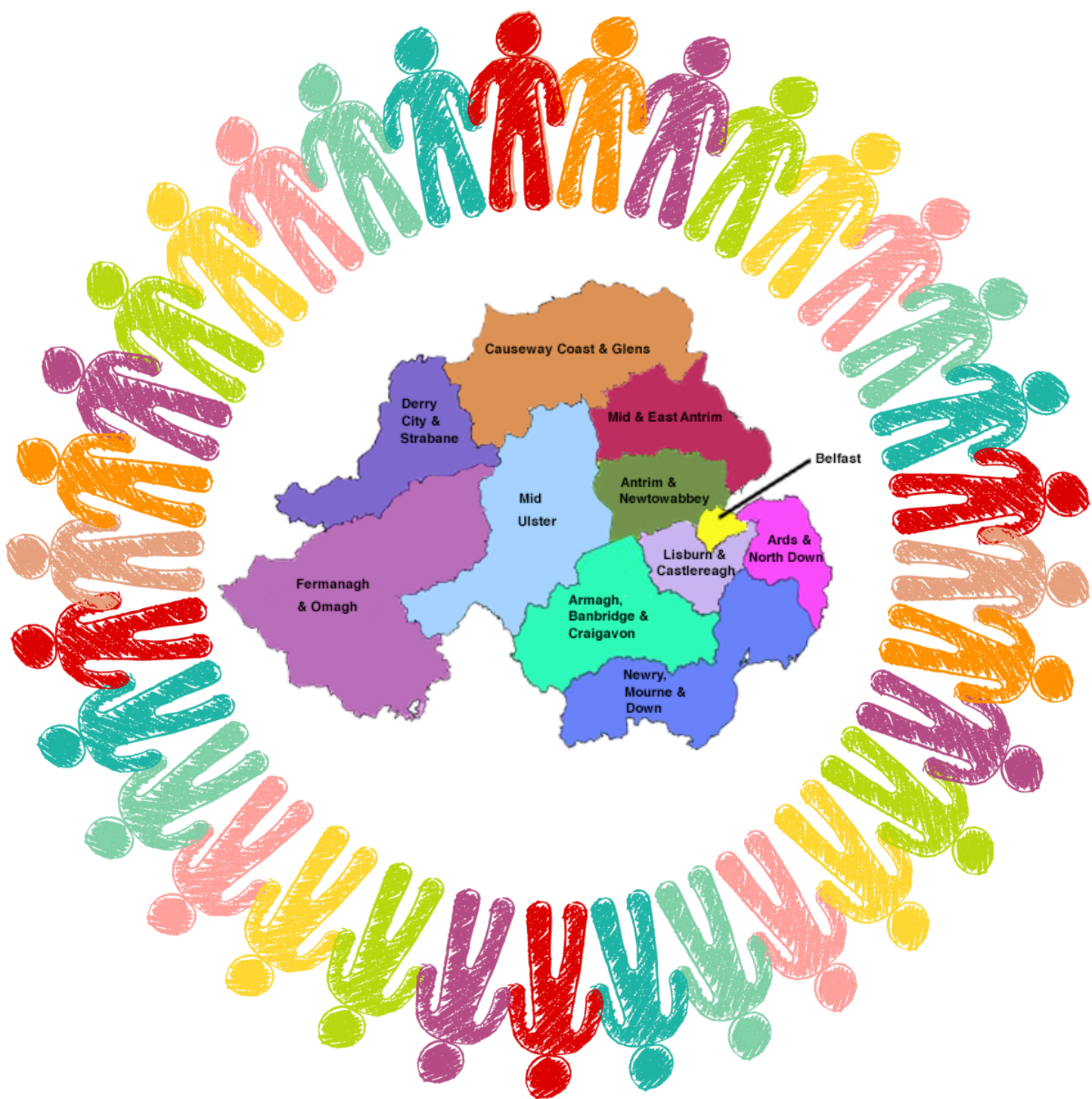


NORTHERN IRELAND CHILDREN & YOUNG PEOPLE'S PLAN

2025-2028



Working together to achieve the
best outcomes for children, young
people and families

CONTENTS

2

Foreword

3

Introduction

5

Strategic Context

9

Our Performance Framework

10

Engagement and Participation

16

Our Regional Priorities and Outcome Statements

17

Regional Action Plan

27

Associated Locality Based Plans

33

Appendix 1 - CYPSP Structure

34

Appendix 2 - CYPSP Working Definitions

35

Appendix 3 - CYPSP Membership

36

Appendix 4 - Children's Services Planning Team



FOREWORD



AIDAN DAWSON

**Chief Executive Public Health Agency /
CYPSP Chair**

As Chair of the Children and Young People's Strategic Partnership (CYPSP / Partnership), I am pleased to introduce the new Children and Young People's Plan for 2025-2028 (Plan).

The CYPSP recognises that no one service works in isolation and to effectively meet needs we must continue to develop our partnership approach, across agencies and sectors with children, parents / primary care givers and families.

The CYPSP Pause and Reset Workshop held in 2023, provided an opportunity for partners to review the strategic role and function of CYPSP, to acknowledge good practice and to agree how we can continue to strengthen multi-agency collaboration. The actions agreed to strengthen our collaborative leadership and communication across the CYPSP network are incorporated in the new Plan as are the priority areas of need where we believe our collective efforts can add value to improving local outcomes for children young people and families.

It is important to note that children, young people and families across Northern Ireland have been central in helping shape this Plan, and we will continue to ensure service user involvement and consultation throughout the next three years.

I would like to express my thanks to everyone who has contributed to the creation of the Plan and I look forward to working with you all to achieve our aims.



INTRODUCTION

Welcome to the Northern Ireland Children and Young People's Plan (Plan) for 2025-2028.

This Plan is developed on behalf of the Children and Young People's Strategic Partnership (CYPSP / Partnership) and outlines the priorities which will drive the work of agencies supporting early

intervention for children, young people and their families over the next three years. Pivotal to developing this Plan has been the consultation with children, young people, parents / primary care givers, service providers and partners at regional and local level.



This Plan captures the voices of children and young people, and reflects our commitment to the United Nations Convention on Children's Rights. Our collective goal is to continue to improve our approach to engaging children and young people, including those from vulnerable or disadvantaged groups in the development of services, and to increase children and young people's direct participation in decision-making which directly affects them and their families.



This Plan builds on the achievements and learning from the previous Plan and is designed to co-ordinate our work, drive improvement and provide a consistency in approaches to delivering services.



Our Purpose

The Children and Young People's Plan is the core plan for the multi-agency delivery of early intervention social care services for children and families in Northern Ireland. The Plan is supported by a number of lower level plans which are in place across the five Outcomes Group areas, associated 25 Locality Planning Groups and the Prevention of Offending Subgroup.



This structure ensures that those plans contribute to the realisation of local outcomes while taking cognisance of regional priorities, outcomes and activities.

Detailed description of the CYPSP structure is available in Appendix 1 and our working definitions are in Appendix 2.

The purpose of the Plan is to:

Set out a shared vision and strategic direction to guide the work of the NI CYPSP for the period 2025-2028

Provide a planning framework agreed by all partner agencies that will be used to develop, monitor, review and improve how we deliver early intervention services

Describe the outcomes we aim to achieve together and the improvements we need to deliver

Set out an integrated approach to implementing our strategy and delivering those improvements



STRATEGIC CONTEXT

The requirement to produce a Children's Services Plan was established in legislation in **The Children (1995 Order) (Amendment) (Children's Services Planning) Order 1998[1]**, and the central aims of **Children's Services Planning** are included in the **Children's Services Planning Guidance 1998 (DHSS/DENI/NIO)**

(<http://www.legislation.gov.uk/nisr/1998/261/made>)

Additionally, **The Children's Services Co-Operation Act (Northern Ireland) 2015[2]** (<https://www.legislation.gov.uk/nia/2015/10/contents/enactedoutlines>) our duty to work together and states in 2 (1) that:

"Every Children's Authority must, so far as is consistent with the proper exercise of its children functions, co-operate with other children's authorities and with other children's services providers in the exercise of those functions".

The Act also creates an enabling power to share resources and pool funds and states that a Children's Authority may "(a) provide staff, goods services, accommodation or other resources to another children's authority; (b) make contributions to a fund out of which relevant payments may be made."

The United Nations Convention on the Rights of the Child (UNCRC)

The United Nations
Convention on the
Rights of the Child



The Act (2015) brings into domestic legislation a requirement to have regard to the relevant provisions of the UNCRC when determining the meaning of the term 'wellbeing' as it relates to children and young people, and states that one of the factors contributing to wellbeing of children and young people is living in a society which respects their rights.

(<https://www.unicef.org.uk/wp-content/uploads/2016/08/unicef-convention-rights-child-uncrc.pdf>)

Policy Context and Structures

The CYPSP Plan is framed within the **NI Executive Children and Young People's Strategy 2020-2030**. This is the overarching Strategy for the delivery of improved outcomes for children and young people.

(<https://www.education-ni.gov.uk/publications/children-and-young-peoples-strategy-2020-2030>)



The Children and Young People's Strategy Monitoring and Reporting Board

The Children and Young People's Strategy Monitoring and Reporting Board was set up in 2023 and provides collaborative leadership, oversight and cross-departmental strategic direction on the co-ordination of all policy matters affecting children and young people and the implementation of the NI Executive Children and Young People's Strategy. This Board consists of senior representation from:

- The NI Executive Office;
- Department of Health;
- Department of Education;
- Department for Communities;
- Department of Justice;
- Department of Agriculture, Environment and Rural Affairs;
- Department of Economy; and
- Department of Finance.

An important element of our work throughout the next three years, will be exploring how we strengthen alignment between the work of CYPSP, and the Children and Young People's Strategy Monitoring and Reporting Board in order to reduce / minimise duplication across Government Departments, and to maximise the potential for CYPSP to inform strategic decisions in line with the duties outlined in the Children's Services Cooperation Act 2015.

OUR VISION



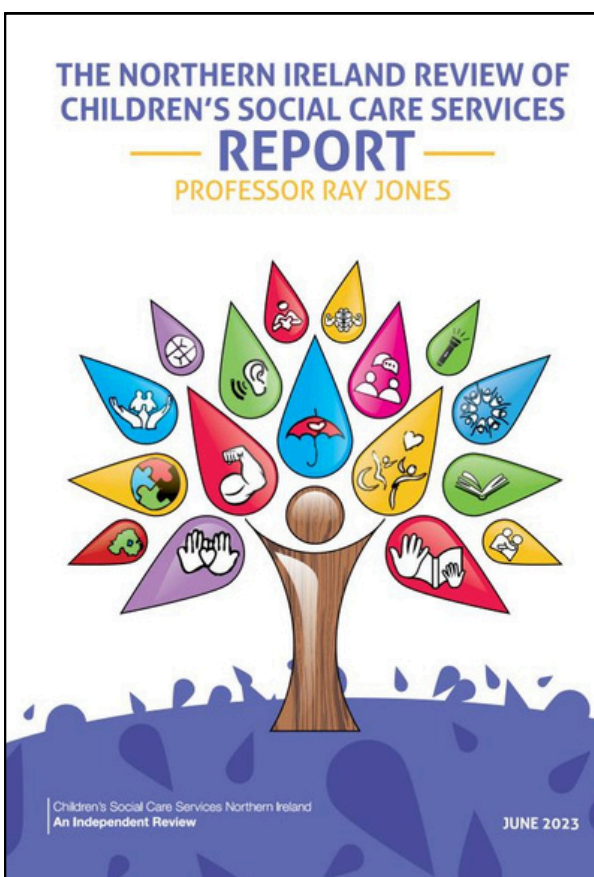
What we will work towards:-



The Strategic Landscape

The production of this Plan takes account of a number of key strategic activities of CYPSP Partners that impact on early intervention on children and young people. These include but are not limited to:

The Independent Review of Children's Social Care (NI)



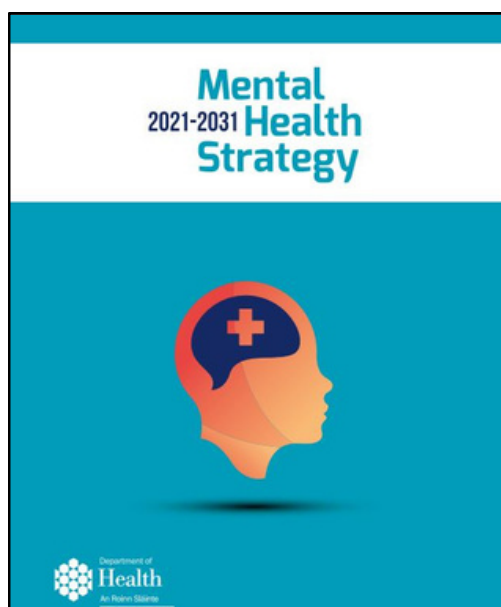
The Independent review of Children's Social Care was a fundamental examination of Children's Services in NI. The review was commissioned in October 2021 by the Minister for Health and the report with recommendations was published in June 2023.

(<https://www.cscsreviewni.net/publications/report-independent-review-childrens-social-care-services-northern-ireland>)

In response to the report, the Children's Social Care Services Strategic Reform Board was established to oversee a programme of work on service improvement and delivery of transformation through a number of workstreams. The Partnership will continue to support reform activity in respect of the delivery of improvements in multi-agency early intervention family support services, through the provision of ongoing information sharing by Partners and through contribution to relevant workstreams which will inform the development of the new Family Support Strategy.



NI Mental Health Strategy



The NI Executive Mental Health Strategy for 2021-2031 sets the future strategic direction of mental health services in Northern Ireland.

(<https://www.health-ni.gov.uk/publications/mental-health-strategy-2021-2031>)

The Partnership will continue to support the Strategy Implementation Plan and associated Workstreams, in respect of Recommendations 1 and 2, which focus on early intervention and prevention across the whole life cycle.

This will include:

- Assisting with work on the data and outcomes framework in respect of children and young people which aligns with CYPSP information systems and interactive map already in existence; and
- Sharing learning and innovation, and communication resources already in place. This will include the CYPSP Youth Wellness Web.

Department of Education: RAISE Programme

The plan for the RAISE programme is for a whole community and place-based approach in localities across Northern Ireland to support the Department of Education's vision that "every child is happy, learning and succeeding". The programme aims to invest in whole community and place-based approaches to raise achievement to reduce educational disadvantage. Links have already been made with relevant existing CYPSP Locality Planning Groups to avoid duplication of effort and add value in promoting best outcomes for children and families in education settings.

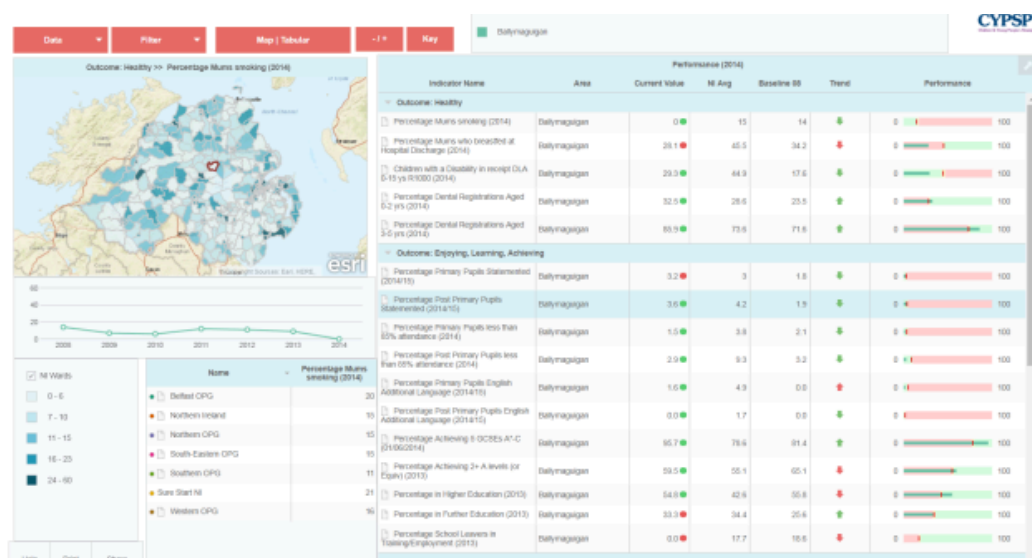
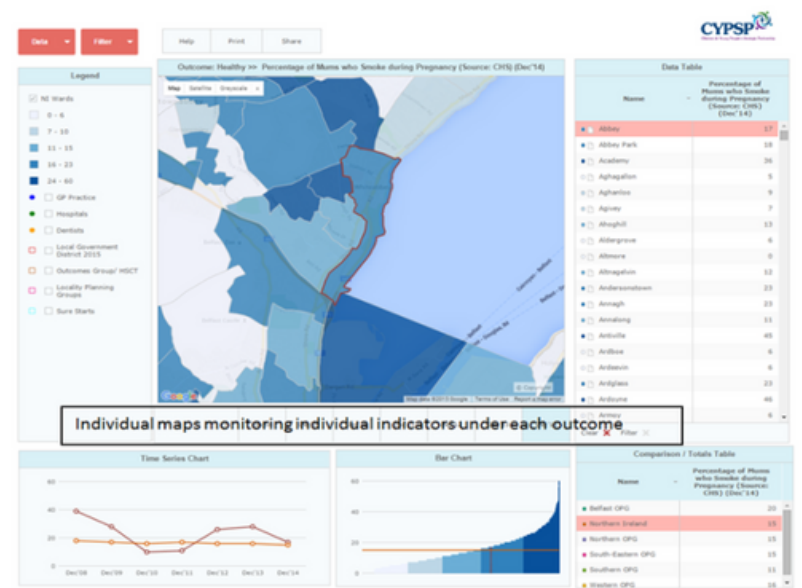
To best harness the potential of integrated planning, all members are committed to ensuring that other strategic / policy interfaces and / or relevant multi-agency planning processes are taken account of during the life of this plan.



Identification of
measurable
population and
performance
indicators to
inform multi-
agency integrated
planning

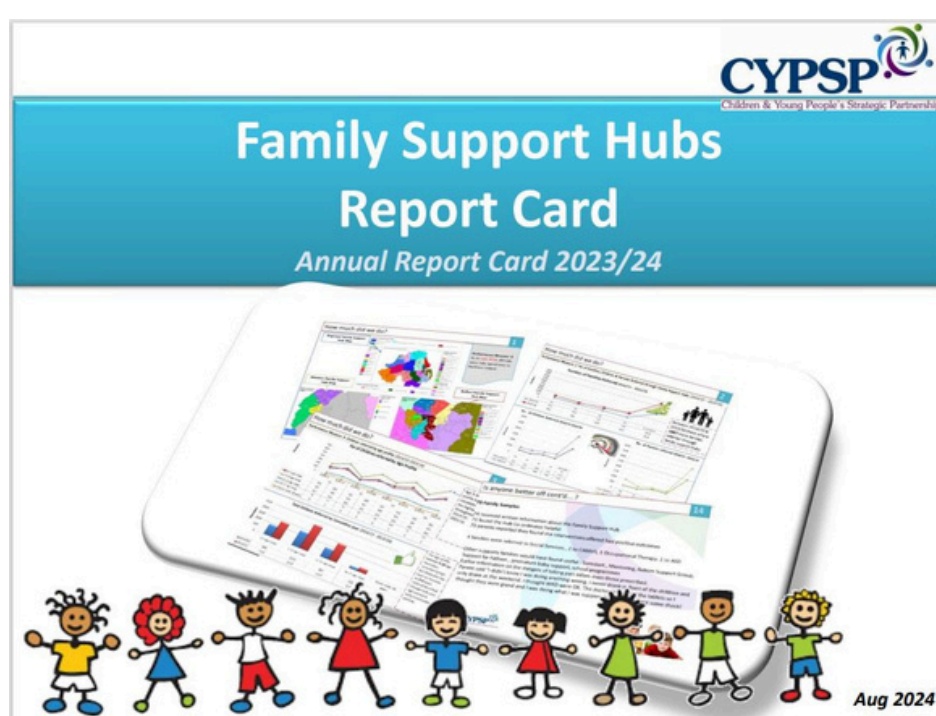
The production of
OBA monitoring
tools and report
cards, for CYPSP's
Outcomes Groups,
Locality Planning
Groups and Family
Support Hubs

<https://cypsp-maps.hscni.net/>



The interactive performance system provides performance data against the high level outcomes measured against a baseline.

<https://cypsp-maps.hscni.net/performance-profile/>



ENGAGEMENT AND PARTICIPATION

Building on existing good practice on engagement and participation, opportunities have been provided through focus groups and consultation exercises with children and young people, parents / primary care givers, Outcomes Group members, Locality Planning Groups, and Partners to inform the development of the Plan.



Consultation and Feedback from Children and Young People



The views of children and young people are fundamental to the development of this Plan in the acknowledgement that children and young people have a right to express their views, and to influence how adults deliver services for them in the areas where they live and learn.

The CYPSP Regional Children and Young People's (CYP) Participation Network builds on our relationships with existing agencies, including youth advocacy groups, ethnic minority and migrant children, young carers and those from vulnerable or disadvantaged groups, and young people from across Northern Ireland. The work of the CYP Participation Network is aligned with the measurement of UNCRC child rights indicators and the purpose of this collaborative Network is to ensure that children and young people continue to inform the work of the Partnership. Feedback from the consultation process with children and young people in respect of the new Plan was provided to CYPSP in March 2024.

“We want to be listened to and for our feedback to be acted upon”
(Young Person)



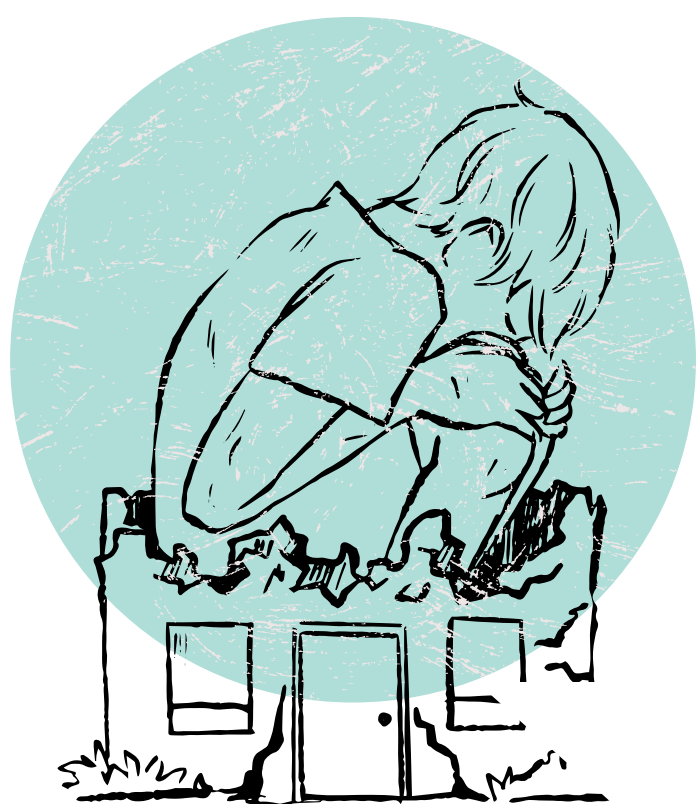
Full report can be viewed at <https://cypsp.hscni.net/wp-content/uploads/2025/01/CYPSP-Voice-of-Children-Young-People.pdf>

The top priorities identified by children and young people for inclusion in the Plan and examples of the commentary and suggested actions are identified below:

Poverty

Young people discussed money struggles, food banks, homelessness, cost of home economics classes, period poverty and Education Maintenance Allowance (EMA).

Suggestions made by young people on how things can be made better;



“Raise awareness of Ylink card, rambler services and other travel concessions”

“Provide budgeting sessions”

“Raise awareness of paid apprenticeships”

School Disruption



Young people discussed missed learning due to strikes, physical and mental health, bullying and isolation.

Suggestions made by young people on how things can be made better;

“Create a friendly atmosphere and space”

“Better preparation for transitions from school to work”

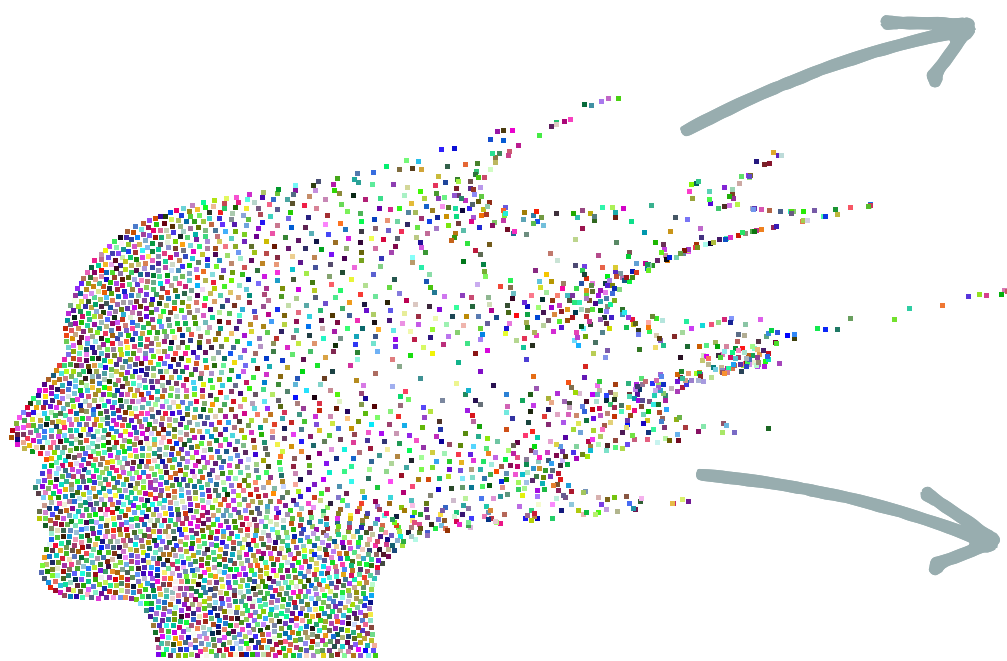
“Have a trusted adult available within all schools/ colleges”



Emotional Mental Health and Wellbeing

Young people discussed the importance of talking to friends, picking up on feelings and checking in, exam stress, body image, anxiety and loneliness.

Suggestions made by young people on how things can be made better;



“Create opportunities to socialise in safe spaces, sport & exercise, face to face support, and group activities”

“Discuss mental health issues and provide more talks within schools to increase awareness”

Children With a Disability / Additional Needs

Young people discussed long waiting lists for assessment, limited support / receiving no support and moving school.

Suggestions made by young people on how things can be made better;

“To be involved with their IEPs and risk assessments”

“For staff to be offered more training relating to children and young people with a disability”

“To be seen as children first”



Parental Participation



The provision of a Parental Participation Service for CYPSP is contracted directly by the Department of Health (DoH), to enable the perspective of parents / primary care givers to influence the activities of the CYPSP and its working groups.

Feedback from the consultation process with parents / primary care givers in respect of the new Plan, was provided to CYPSP in March 2024.

“Parents are concerned about inconsistency and fragmentation of services and want to be able to find the right support at the right time”.

“Parents want services that are family friendly and local”.

“Peer support, activities and safe spaces for parents and young people in their communities”.

“Parents want support to help with children’s non attendance at school and school based anxiety”.

CYPSP Partner Consultation

The CYPSP Pause and Reset Workshop in 2023, provided an opportunity for Partners to review the strategic role and function of CYPSP. This provided opportunity to acknowledge good practice and to agree actions to strengthen multi agency collaboration.

Areas for improvement included a need for collaborative ownership of the Plan, and collective accountability to strengthen the shared vision for children, young people, families and communities. The actions agreed from this work are incorporated in the new Plan.



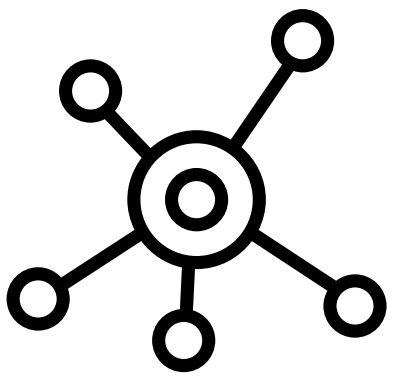
The existing CYPSP structure supports a collective leadership model including sharing of practice, knowledge and collective action planning.

Partners have a shared vision for children, young people, families and communities.

CYPSP does not always have a single voice, owing to multiple and varying priorities and strategies.



Consultation and Feedback from Outcomes Groups



All five Outcomes Groups participated in a planning process where they were provided with a planning pack developed by the Children's Services Planning Team, that included statistical information which identified performance against the indicators under each high-level outcome of the NI Children and Young People's Strategy.

Outcomes Groups Plans were also informed by information provided on emerging issues being raised by Locality Planning Groups (LPGs), unmet need identified by Family Support (FS) Hubs, consultation feedback from children and young people and information from parents / primary care givers.

Key cross cutting areas for the new Outcomes Groups Plans for 2025-2028 include:

- Inclusive* provision of family support services;
- Mental health: in particular school-based anxiety;
- Poverty (in some Outcomes Group areas this also incorporates issues in respect of housing stress).

*(*this includes children with a disability / additional needs; children and young people at risk of involvement in criminal activity; ethnic minority and migrant children / young people; and other vulnerable or disadvantaged groups.)*

Individual Outcomes Groups Plans are included on pages 27-31.

Consultation and Feedback from Multi-Agency Locality Planning Groups

The consultation process with LPGs highlighted those issues that are most common across all of the groups, as well as emerging specific locality-based needs.



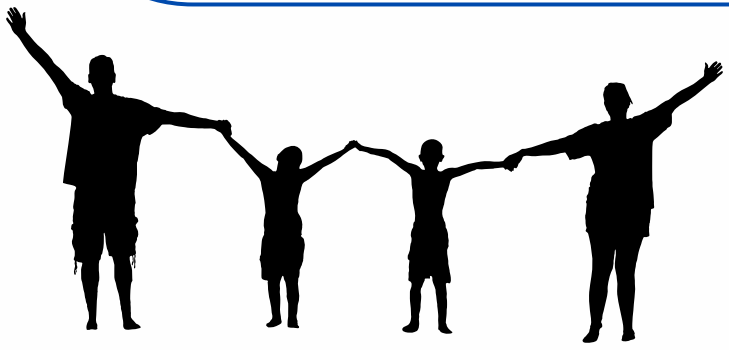
Feedback on this aspect of the consultation process was shared with the partnership in March 2024.

Poverty and housing stresses are being reported as a significant area of concern across localities and the number of families experiencing difficulties connected to poverty continues to rise. LPG Coordinators also identified as emotional health and wellbeing needs as a cross cutting

theme, as well as a need to continue to develop and deliver early intervention services for children with additional needs.



Learning and Evidence from Family Support Hubs



Quarterly monitoring activity and annual reports from FS Hubs highlighted the main areas of unmet need both at Hub level and regionally.

At Hub level, unmet need varies in category and level across the region. Information about key areas of unmet need at locality level have been shared with LPGs and Outcomes Groups and these have helped to shape the Outcomes Group Plans.

There has been work undertaken to improve consistency in how unmet need is captured and reported across the region and ensuring this information is being reported on an ongoing basis across CYPSP structures.

The top five reasons for referral in 2023/24 were:

- Financial support;
- Emotional and behavioural difficulty support for primary age children;
- Parenting programmes / parenting support;
- Emotional and behavioural difficulty support for post primary school children; and
- Counselling services for children / young people.

Four of these reasons for referral also constitute unmet need across localities.



OUR REGIONAL PRIORITIES AND OUTCOME STATEMENTS



The priorities contained within this Plan, are those where we believe our collective efforts can add most value in improving local outcomes.

They are based on our analysis of data and consultation feedback.

These are:

PRIORITY	OUTCOME STATEMENT
Children and Young People's Voices and Parental Participation	Children, young people and parents / primary care givers are supported to express their views and to participate in the planning process.
Collaborative Leadership and Communication	High standard of cross sectoral collaborative leadership, ownership and communication of the agreed strategic objectives in NI Children and Young People's Plan.
Inclusive Family Support	Families are able to access support to meet their needs as early as possible.
Early Intervention Mental Health and Emotional Wellbeing	Improved multi-agency early intervention of mental health and wellbeing services for children and families.
Children Affected by Disruption to Their Education	Emotional and behavioural support for children, young people and families facing school based anxiety and / or avoidance.
Poverty including Housing Stress	Improved support to tackle the impact of poverty on the wellbeing of children, young people and their families including housing stress / homelessness.



REGIONAL ACTION PLAN

CHILDREN AND YOUNG PEOPLE’S VOICES AND PARENTAL PARTICIPATION

Children, young people and parents / primary care givers are supported to express their views and to participate in the planning process

ACTION	EVALUATION	LEAD
Support children and young people to contribute to the planning process and review of strategic priorities.	Children and young people have contributed positively to relevant Regional Subgroups / Task and Finish Groups, Outcomes Groups and LPGs via a range of approaches including surveys, focus groups and workshops.	Task Groups, Outcomes Groups and LPGs supported by Children’s Services Planning Team
Maintain the rights of the child as central to the Children Services Planning process through the use of the UNCRC child rights monitoring data to inform action plans.	Increase in performance evidenced in annual reports 2025-2028 and linked to UNCRC indicators.	Outcomes Groups and LPGs supported by Children’s Services Planning Team
Support parents / primary care givers to contribute to annual planning and review of strategic priorities.	Parents / primary care givers have contributed positively to Outcomes Groups and LPGs via a range of approaches including surveys, focus groups and workshops.	CYPSP Parental Participation Project in conjunction with Outcomes Groups and LPGs



COLLABORATIVE LEADERSHIP AND COMMUNICATION

High standard of cross sectoral collaborative leadership, ownership and communication of the agreed strategic objectives in NI Children and Young People’s Plan

ACTION	EVALUATION	LEAD
All Partners, both collectively and within own agencies, own and promote the NI Children and Young People’s 2025-2028 Plan and the agreed strategic objectives identified.	Evidence of inclusion / reference to the NI Children and Young People’s Plan in all Partner agencies Business Plans evidenced in Children’s Services Planning annual reports and reported via Partnership.	All Partners
All agencies will contribute to the provision of agency updates / activities to the Partnership including annual reviews of collaborative activity, achievements and challenges.	Evidence of equity of contribution by all Partner agencies to the sharing of information / learning in respect of the agreed regional priorities in annual reports and final 2025-2028 report card.	All Partners
Strengthen strategic synergy in monitoring and reporting processes in respect of the NI Executive Regional Children and Young People’s Strategy and the NI Children and Young People’s Plan in line with the duties outlined in the Northern Ireland Children’s Services Co-operation Act.	Proposal to clarify alignment with Children and Young People’s Strategy including monitoring and reporting processes signed off by Partnership March 2025.	All Partners



COLLABORATIVE LEADERSHIP AND COMMUNICATION

High standard of cross sectoral collaborative leadership, ownership and communication of the agreed strategic objectives in NI Children and Young People’s Plan

ACTION	EVALUATION	LEAD
Revised CYPSP governance procedures to take account of strengthened monitoring and reporting processes.	Approved and signed off by all Partners September 2025.	Children’s Services Planning Team
Facilitate joint commissioning by agencies when it is seen as appropriate to meet the needs of children.	By 2027 will evidence joint commissioning in 4-5 Partnership areas.	All Partners
Ensure cross sectoral Outcomes Groups leadership, membership and participation in the management of Outcomes Groups Plans, including consideration of recruitment of non Health and Social Care Trust Outcomes Groups chairing arrangements.	Evidence of gap analysis of Outcomes Groups membership completed by June 2025, and of additional cross sectoral representation at Outcomes Groups where required, in place by September 2025 and reflected in annual membership / attendance audit.	Outcomes Groups assisted by Children’s Services Planning Team



COLLABORATIVE LEADERSHIP AND COMMUNICATION

High standard of cross sectoral collaborative leadership, ownership and communication of the agreed strategic objectives in NI Children and Young People's Plan

ACTION	EVALUATION	LEAD
All Outcomes Groups Plans are aligned with the agreed strategic priorities and informed by CYPSP baseline and performance data which will be disseminated annually by the Children's Services Planning Team (SPPG/DoH) to inform planning and assist with annual review of plans.	Evidence of all five Outcomes Groups Plans including baseline and performance data uploaded to the CYPSP website, reviewed and updated annually.	Outcomes Groups assisted by Children's Services Planning Team
Continued work on aligning Outcomes Groups Plans with local Council Community Plans across the region.	Evidence of alignment of all children and young people sections of local Council Community Plans by March 2026 and reflected in annual reports.	Local Councils assisted by Children's Services Planning Team
All LPG Plans are aligned with the agreed strategic priorities and make use of CYPSP baseline and performance data but also include where necessary, responses to other areas of localised need and area reviewed annually at Outcomes Groups level.	Evidence of LPG Plans presented using an agreed standard template, uploaded to the CYPSP website and reviewed and updated annually.	LPG Coordinators assisted by Children's Services Planning Team
Review and update the regional standards for Locality Planning.	Revised standards developed and signed off by the Partnership by September 2025.	LPG Coordinators assisted by Children's Services Planning Team



INCLUSIVE FAMILY SUPPORT

Families are able to access support to meet their needs as early as possible

ACTION	EVALUATION	LEAD
Maintain strong links with the reform of social care process workstreams.	All Partners are clear on the implications of the Reform of Social Care Workstream activity and implications for the multi-agency early intervention have been explored e.g. models of early intervention family support, children with disability.	Workstream Chairs / All Partners
Align strategic and locality based planning with objectives identified in the Regional Disability Framework and maintain co-production activity with parents / primary care givers and children with disability / additional needs.	Monitored use and continuous feedback in respect of Your Journey Guide (co-produced with parents / primary care givers). Evidence through report cards and new resources.	All Partners / Outcomes Groups / Children's Services Planning Team
Strengthen links with agencies and representatives of ethnic minorities to identify supports and gaps in early intervention service provision.	Evidenced through report cards on pilot initiatives, roll out of innovative projects and training and analysis of usage of CYPSP Translation Hub.	All Partners / Outcomes Groups
Strengthen multi-agency activity in respect early intervention services for children and young people at risk of involvement in criminal activity.	Evidenced through the outworking of the CYPSP Prevention of Offending Subgroup / updates to the Partnership.	CYPSP Prevention of Offending Subgroup members



INCLUSIVE FAMILY SUPPORT

Families are able to access support to meet their needs as early as possible

ACTION	EVALUATION	LEAD
All five Outcomes Groups will develop and maintain local based planning to improve the provision of practical family support in their area, address and report on gaps in services and maintain links with the reform of social care process.	Evidence through report cards. Evidence of family support delivery mechanisms, identification of gaps and exploration of existing best practice across the region. Evidence through specific reports on emerging challenges or the role / structure of FS Hubs, where deemed appropriate.	Outcomes Groups
LPGs will develop and maintain locality based planning to improve the provision of practical family support, address and report on gaps in services and escalate to Outcomes Groups.	Evidence through LPG report cards. Evidence of emerging needs reported to Outcomes Groups.	LPG Coordinators
FS Hubs maintain and develop Hub monitoring and reporting, respond to developments and trends and share information re unmet need to LPGs and Outcomes Groups.	Evidenced through report cards, family samples and FS Hubs annual report cards 2025-2028.	Regional Lead for FS Hubs



EARLY INTERVENTION MENTAL HEALTH AND EMOTIONAL WELLBEING

Improved multi-agency early intervention of emotional mental health and wellbeing services for children and families

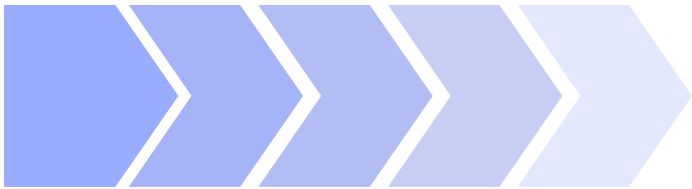
ACTION	EVALUATION	LEAD
PHA as lead agency will take forward actions and ensure effective contributions from Partners to avoid duplication, and provide regular updates in respect of NI Mental Health Strategy implementation.	All Partners are aware of and contributing to actions in respect of the implementation of NI Mental Health Strategy Recommendations 1 and 2. Evidence through consultation for annual reports 2025-2028.	PHA / All Partners
CYPSP data and outcomes information is used to inform NI Mental Health Strategy implementation to avoid duplication.	The CYPSP data and outcomes information is aligned to NI Mental Health Strategy outcomes framework.	NI Mental Health Strategy Data and Outcomes Subgroup, assisted by Children’s Services Planning Team
Maintain the co-produced CYPSP Youth Wellness Web through the use of consultation forums and surveys.	Monitored use and continuous feedback from children, young people, families and professionals evidenced through reach and survey feedback.	Children’s Services Planning Team



EARLY INTERVENTION MENTAL HEALTH AND EMOTIONAL WELLBEING

Improved multi-agency early intervention of emotional mental health and wellbeing services for children and families

ACTION	EVALUATION	LEAD
All five Outcomes Groups will develop and maintain local based planning to improve the provision of early intervention mental health emotional wellbeing in their area, address and report on gaps in services and maintain links with the NI Mental Health Strategy Implementation Plan (Recommendations 1 and 2), and the Regional Emotional Health and Wellbeing Frameworks.	Evidence through report cards and illustrated in CYPSP annual reports 2025-2028.	Outcomes Groups
LPGs will develop and maintain locality based planning to improve multi-agency mental health emotional wellbeing services and explore emerging issues to address or escalate to Outcomes Groups.	Evidence through report cards. Emerging needs reported to Outcomes Groups.	LPG Coordinators
FS Hubs maintain and develop Hub monitoring and reporting, respond to developments and trends, and share information re unmet need to LPGs and Outcomes Groups.	Evidenced through report cards, family samples and FS Hub annual report cards 2025-2028.	FS Hubs led by Regional Lead for FS Hubs



CHILDREN AFFECTED BY DISRUPTION TO THEIR EDUCATION

Emotional and behavioural support for children, young people and their families facing school-based anxiety and / or avoidance

ACTION	EVALUATION	LEAD
The Partnership will support the implementation of Department of Education’s RAISE initiative.	Evidence of alignment with agreed locality based outcomes via the RAISE initiative.	Department of Education
All five Outcomes Groups will develop and maintain local based planning to improve emotional and behavioural support for children, young people and their families facing school based anxiety and / or avoidance to include developing and maintaining links with Emotional Wellbeing Teams in schools, and Department of Education’s RAISE initiative.	Evidence of improvement through report cards and population and outcome data by 2027.	Outcomes Groups
LPGs included in Department of Education’s RAISE initiative will work alongside the RAISE Co-ordinators in those localities.	Evidence of improvement through report cards and population and outcome data by 2027.	LPG Coordinators
LPGs will continue to explore emerging issues / gaps in respect of education to address or escalate to Outcomes Groups.	Evidence through report cards. Emerging needs reported to Outcomes Groups.	LPG Coordinators
Parental Participation Service will work with parents / primary care givers around production of a guide for parents / solutions for school avoidance.	Evidence of co-produced resources.	CYPSP Parental Participation Service (CINI)

POVERTY INCLUDING HOUSING STRESS

Improved support to tackle the impact of poverty on the wellbeing of children, young people and their families including housing stress / homelessness

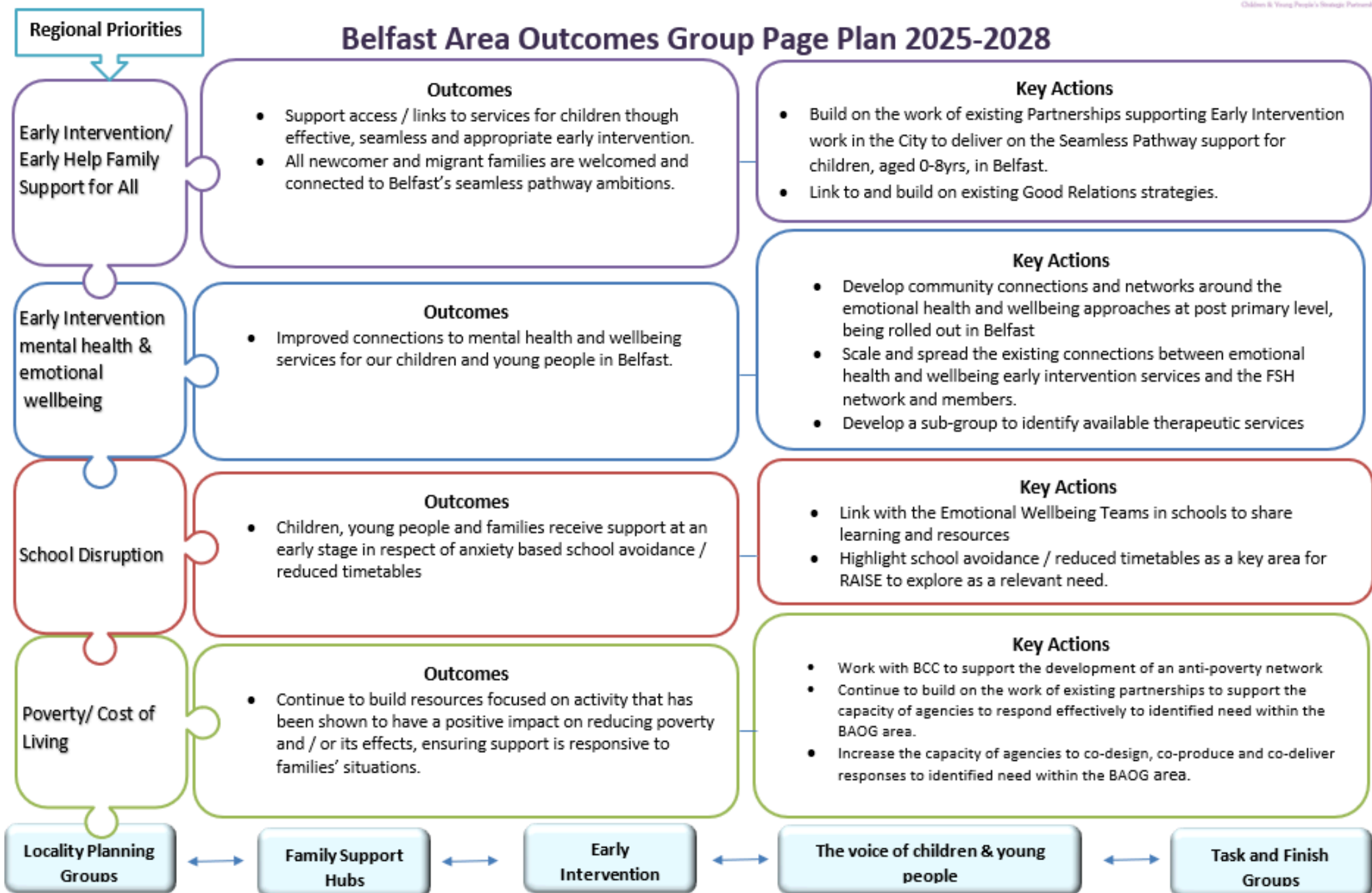
ACTION	EVALUATION	LEAD
The Partnership will review and share learning, challenges and good practice in respect of statutory, community and voluntary support services / currently available within and between respective agencies including local government and Housing Executive initiatives.	Evidence of a more comprehensive understanding of services available across sectors to inform appropriate dissemination to families and children via CYPSP and Partner agencies.	All Partners
All five Outcomes Groups will develop a coordinated approach to provide timely support in respect of food and fuel poverty and the cost of living crisis.	Evidence of improvement through report cards and population and outcome data by 2027.	Outcomes Groups
LPGs will develop and maintain locality based planning to improve multi-agency provision of services to support children and families in poverty, and explore emerging issues to address or escalate to Outcomes Groups.	Evidence of improvement through report cards and population and outcome data by 2027.	LPG Coordinators
FS Hubs will continue to signpost families which will assist with food and fuel poverty issues.	Evidence of improvement through FS Hub report cards and FS Hub monitoring data.	FS Hubs led by Regional Lead for FS Hubs



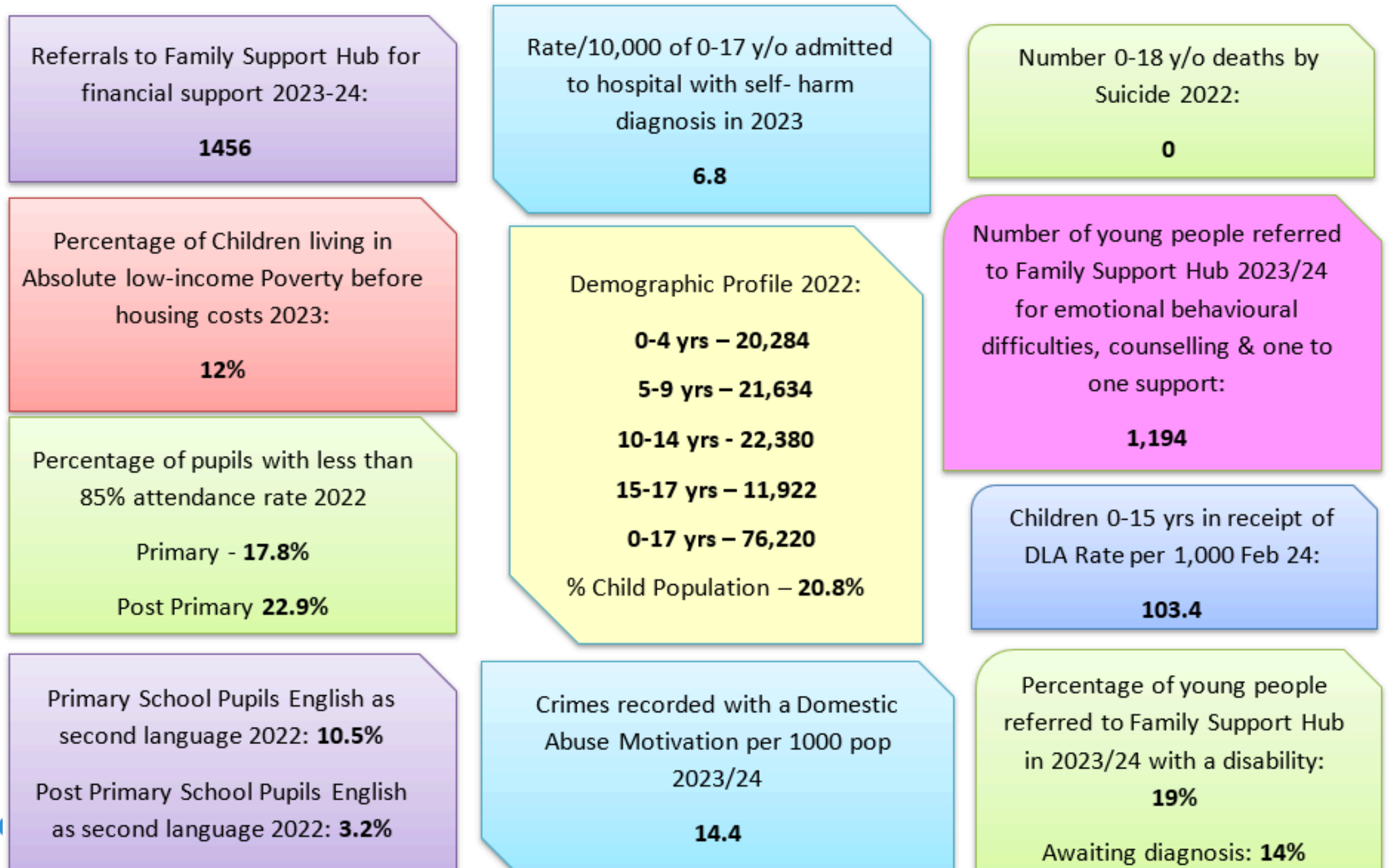
ASSOCIATED LOCALITY BASED PLANS

Outcomes Groups

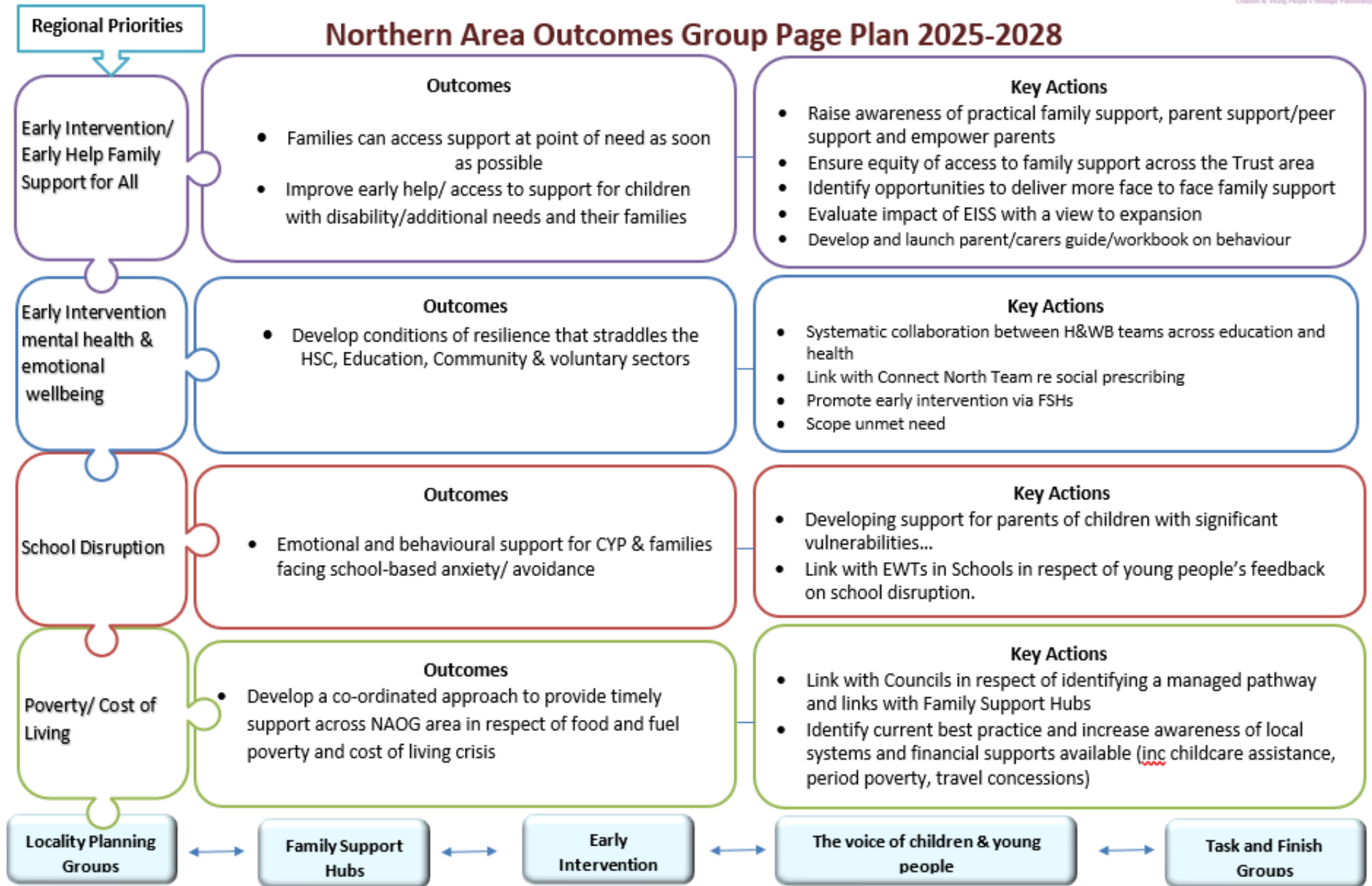
Belfast Area Outcomes Group Plan on a Page



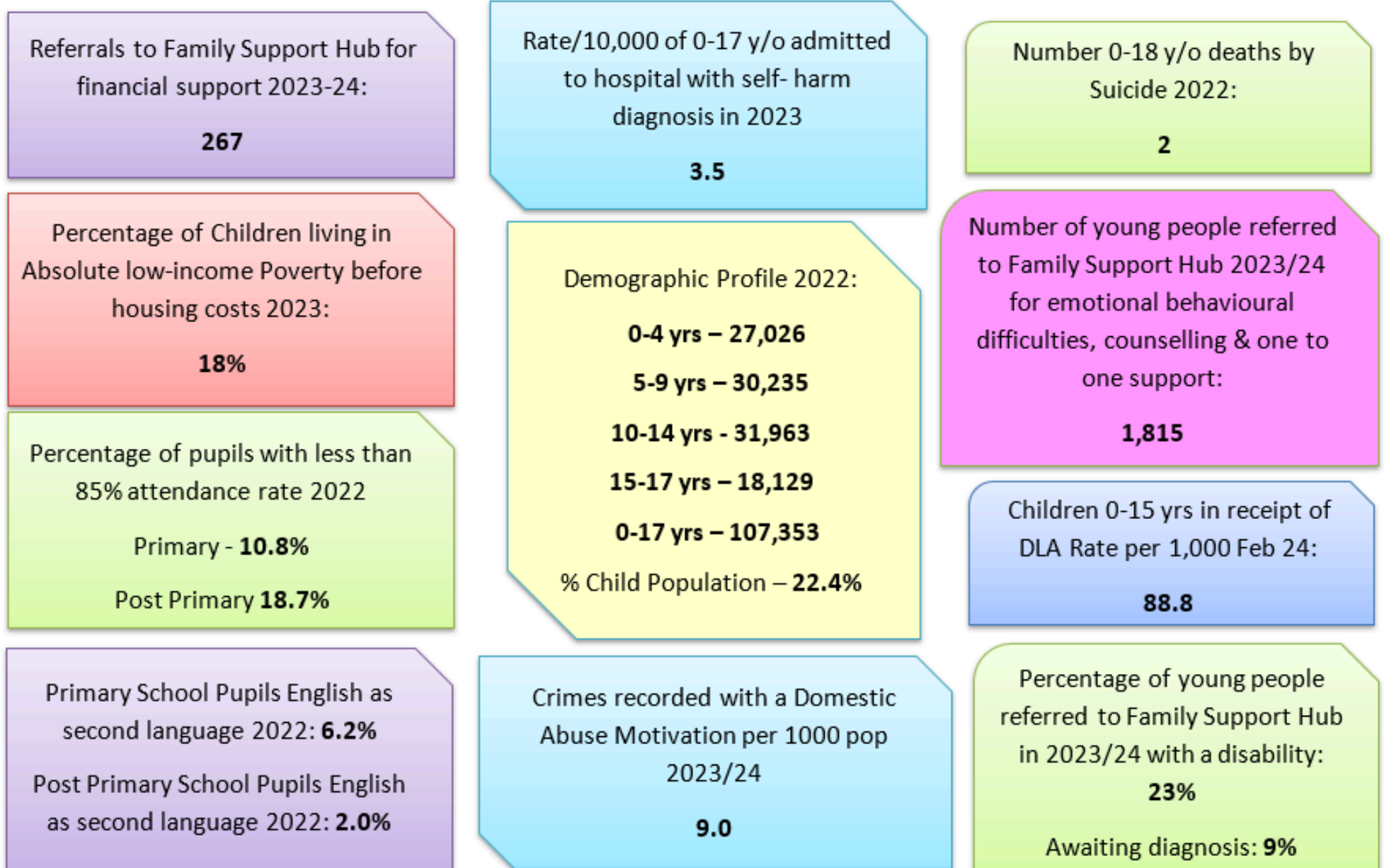
Belfast Area Outcomes Group Baseline Data 2022-24



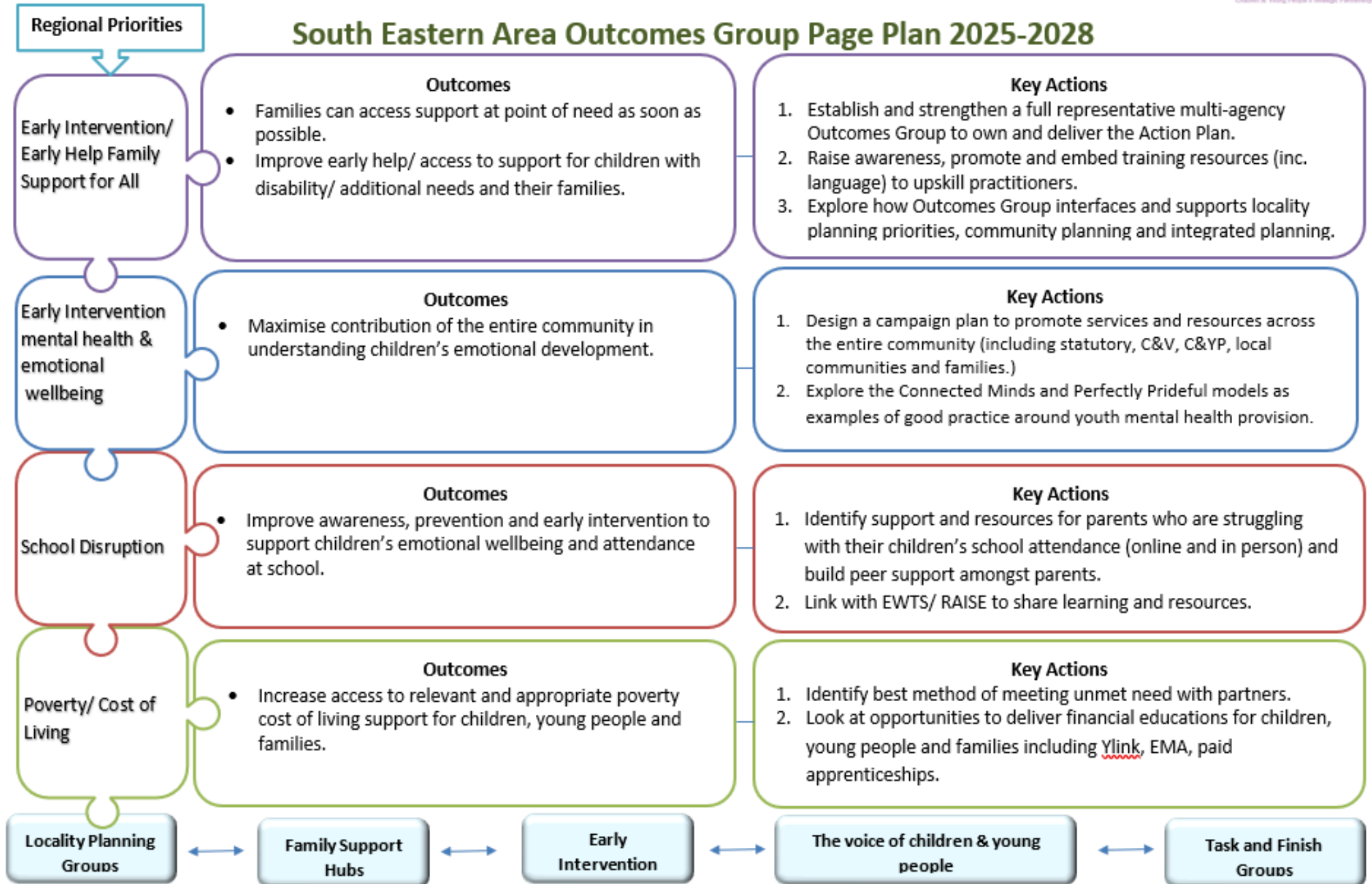
Northern Area Outcomes Group Plan on a Page



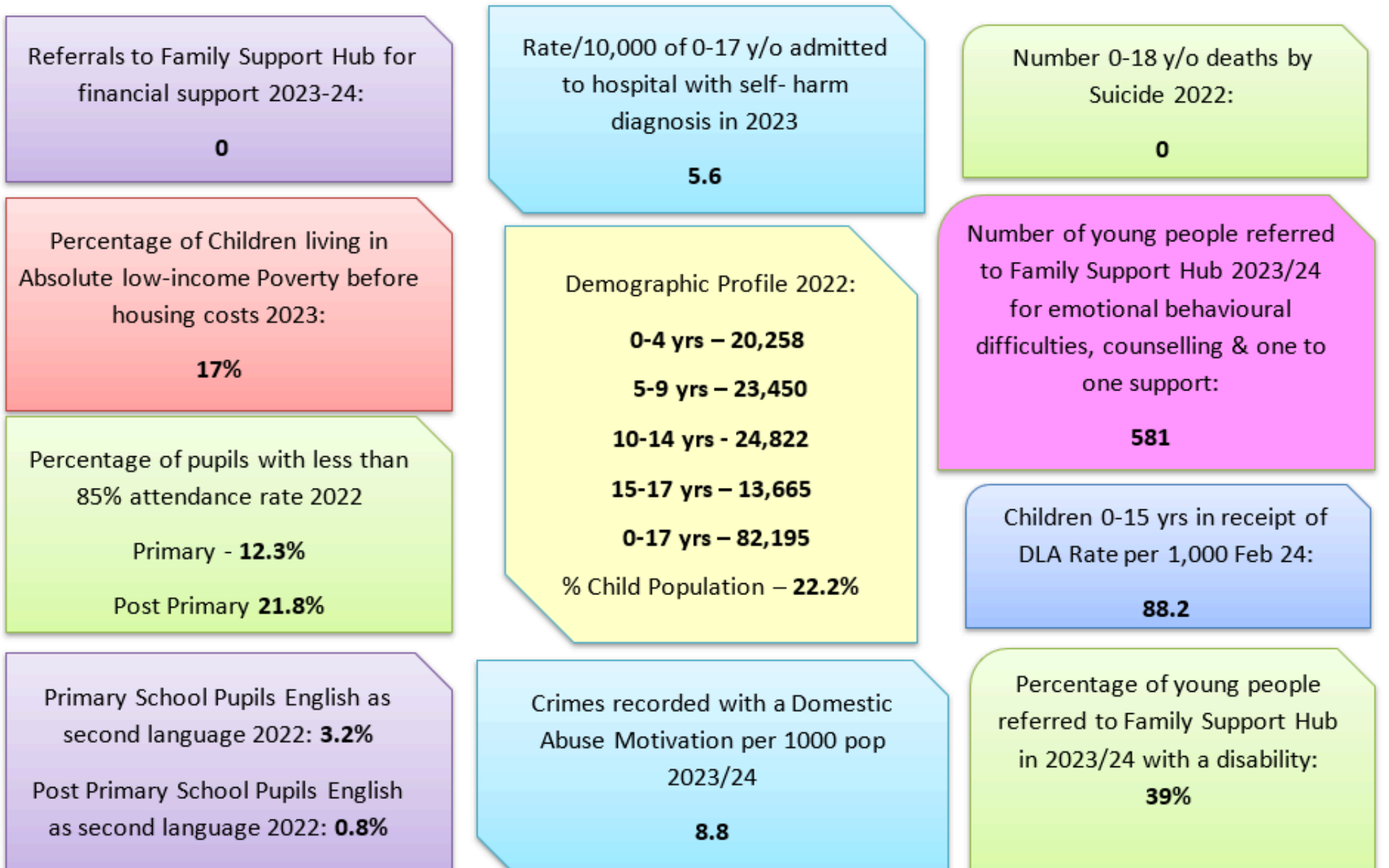
Northern Area Outcomes Group Baseline Data 2022-24



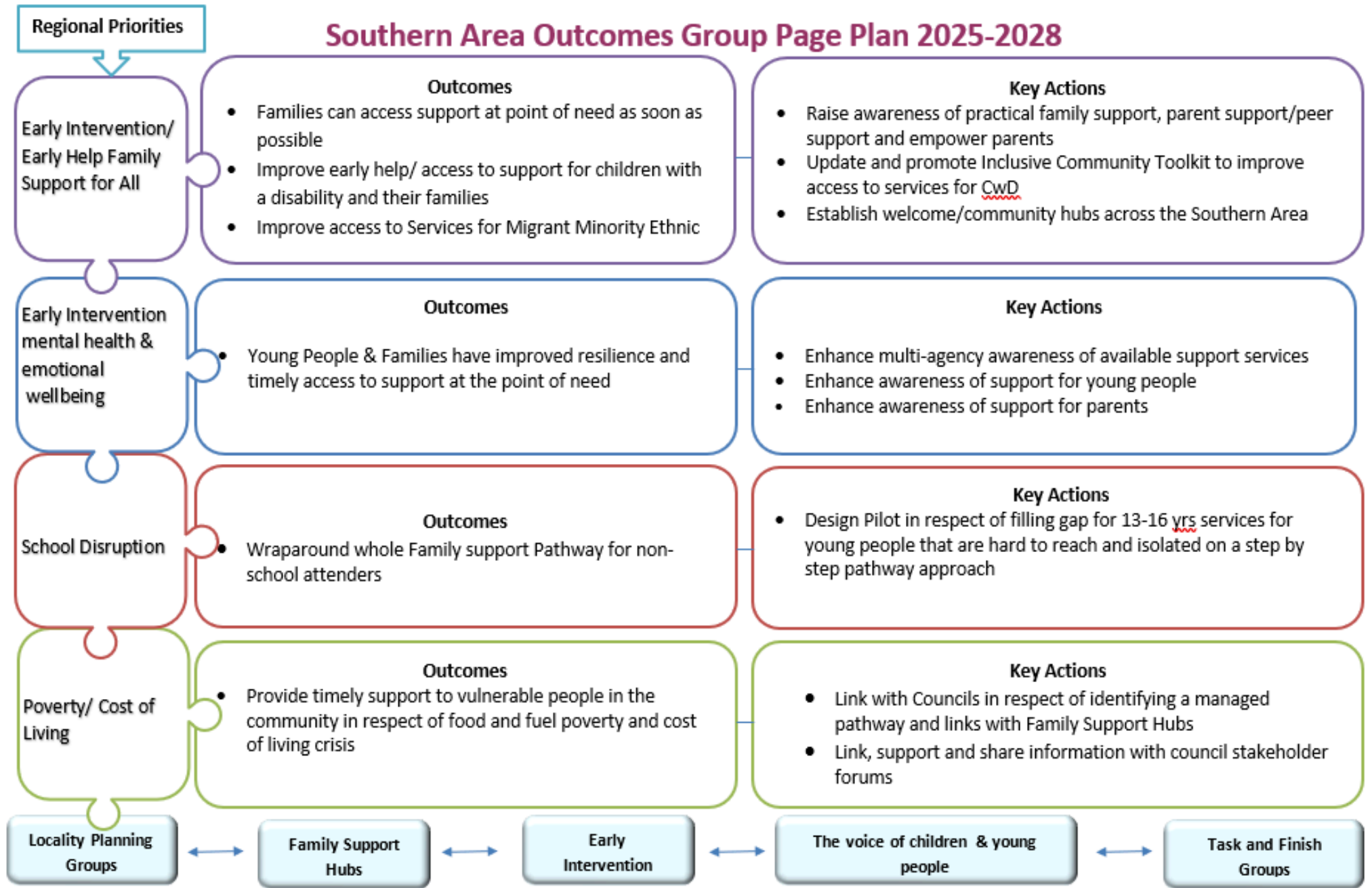
South Eastern Area Outcomes Group Plan on a Page



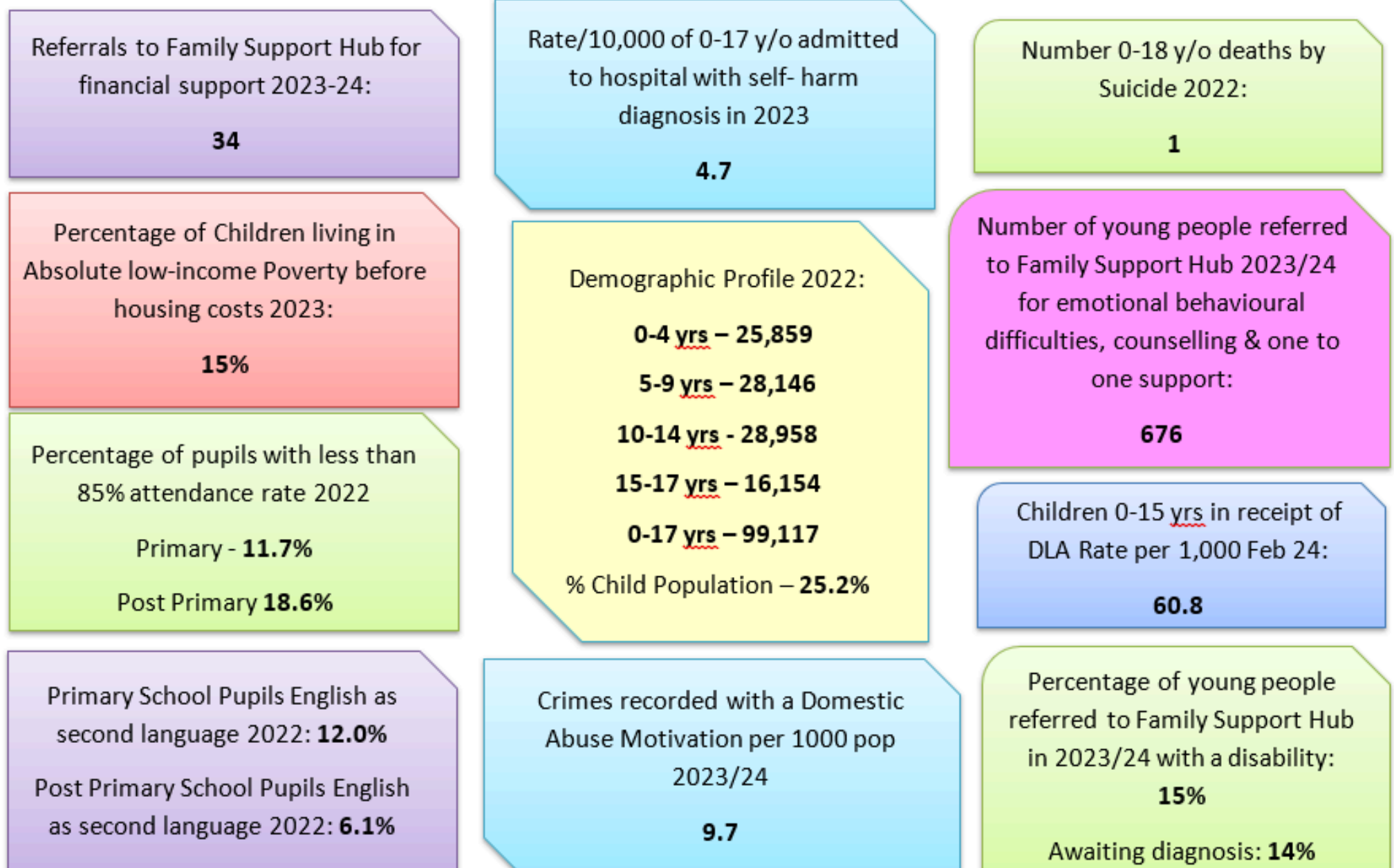
South Eastern Area Outcomes Group Baseline Data 2022-24



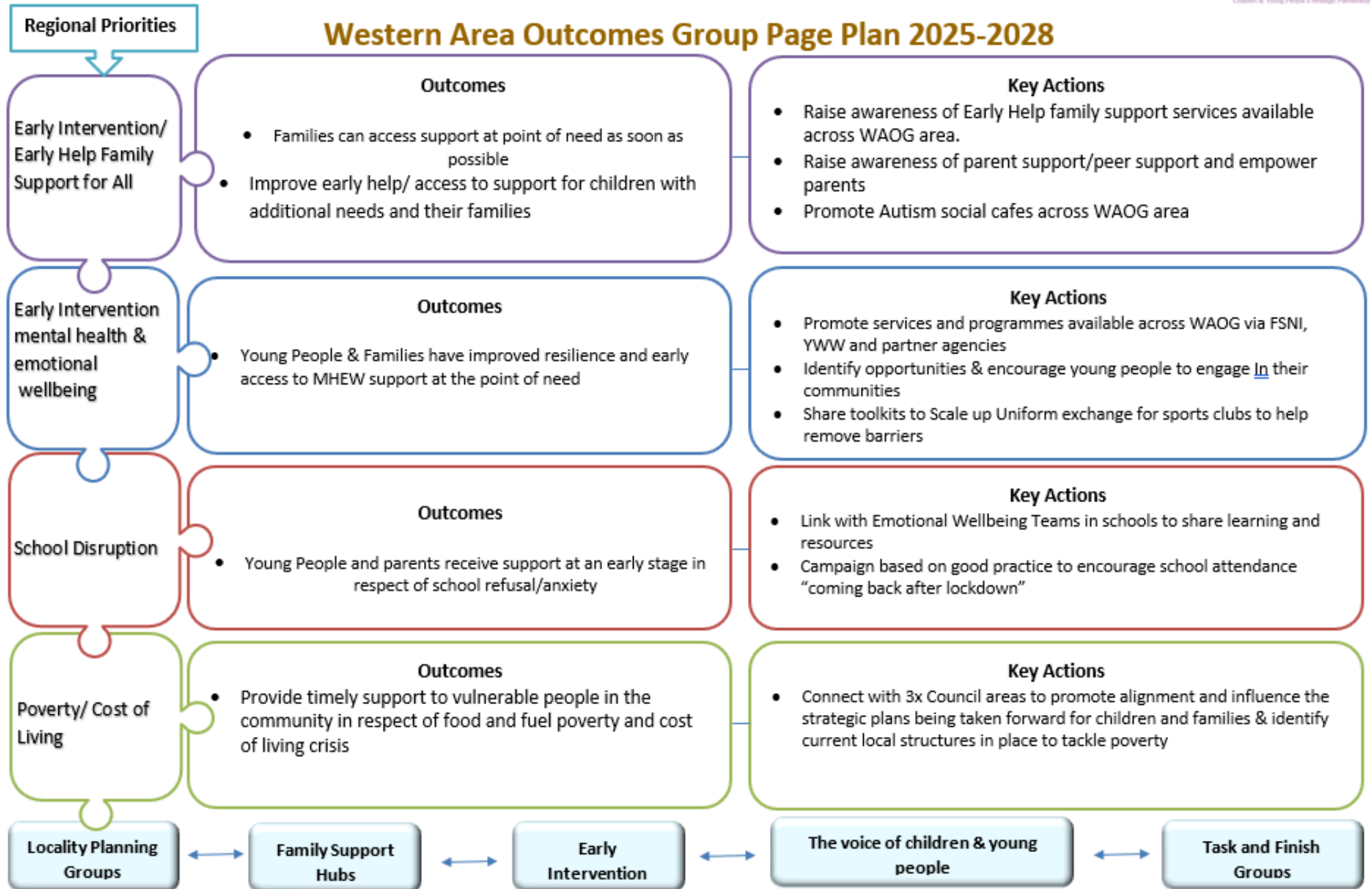
Southern Area Outcomes Group Plan on a Page



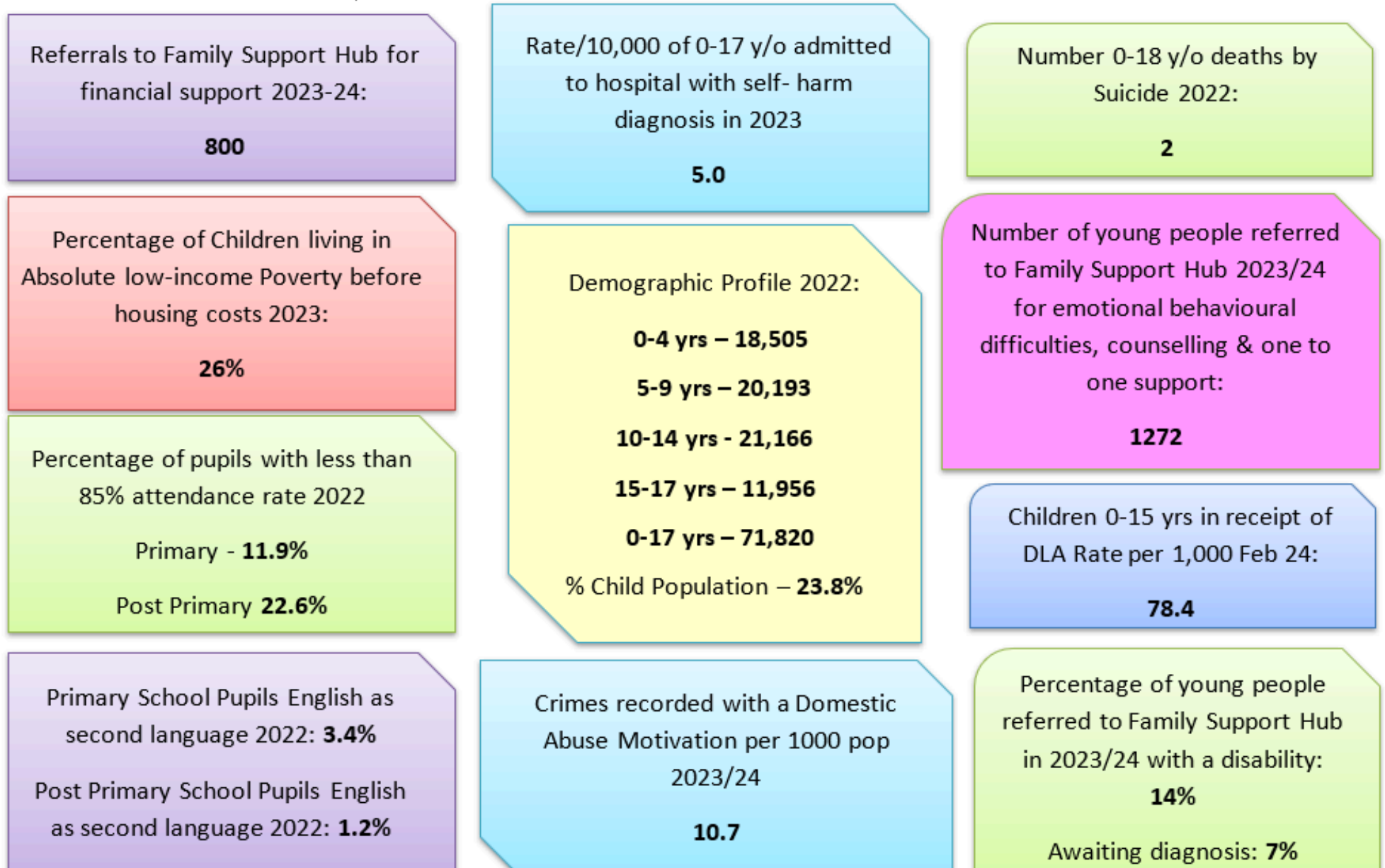
Southern Area Outcomes Group Baseline Data 2022-24



Western Area Outcomes Group Plan on a Page



Western Area Outcomes Group Baseline Data 2022-24



Outcomes Groups Full Plans

Full Outcomes Groups Action Plans can be viewed at:

[Belfast Area Outcomes Group;](#)
[Northern Area Outcomes Group;](#)
[South Area Eastern Outcomes Group;](#)
[Southern Area Outcomes Group;](#) and
[Western Area Outcomes Group.](#)

These plans are live documents and will be updated throughout the planning cycle and subject to annual review.



Locality Planning Groups Plans

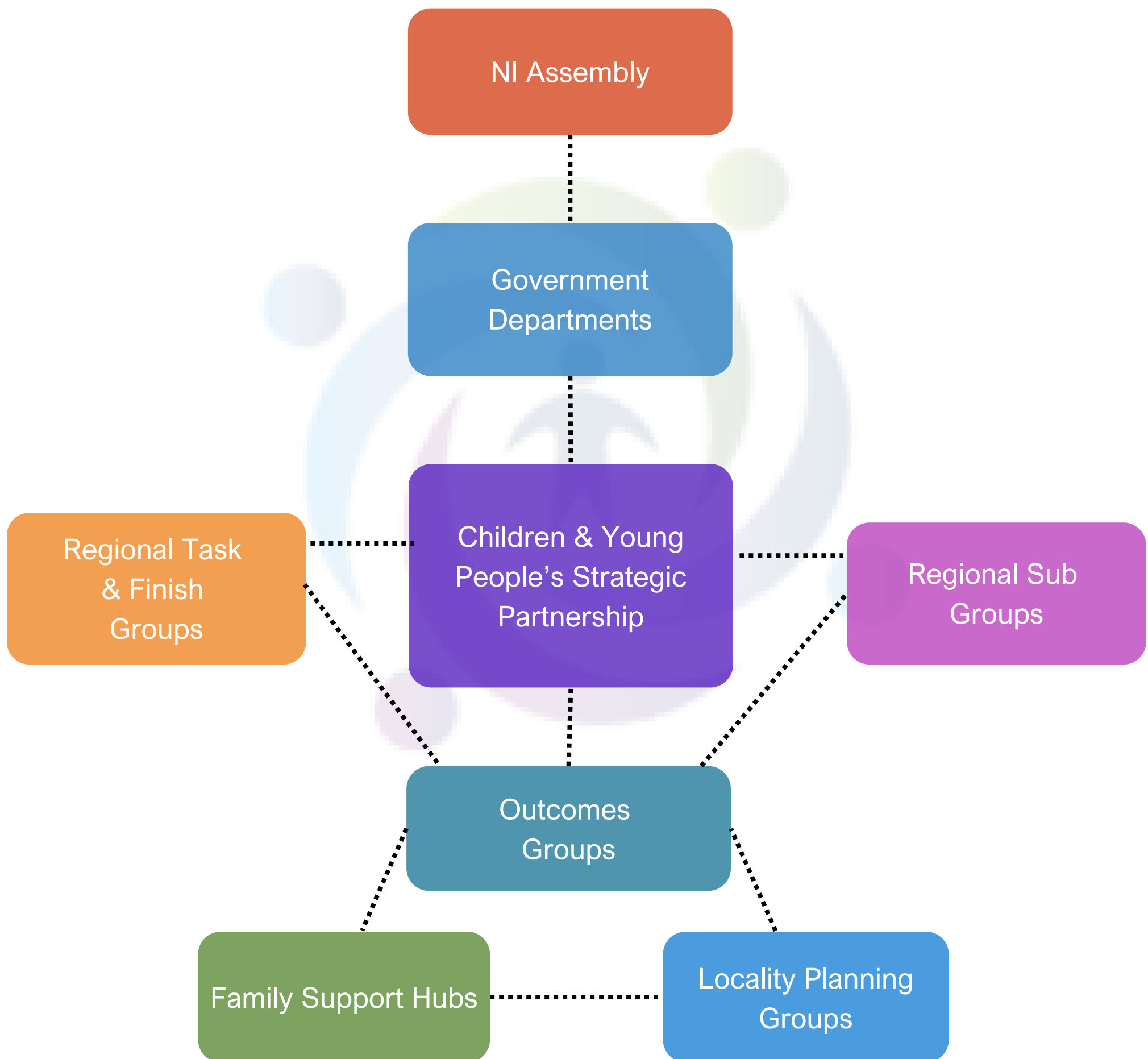
The 25 LPGs across the region have developed individualised Action Plans which are linked to the actions identified in Outcomes Groups Plans, and the baseline data which identifies localised priorities.



These Action Plans are live and will be updated throughout the planning cycle, and subject to annual review and can be viewed at <https://cypsp.hscni.net/locality-planning-groups/>



CYPSP STRUCTURE



APPENDIX 2

CYPSP WORKING DEFINITIONS

The Plan focusses on promoting prevention and early intervention, and works to the following definition:

Early Intervention is intervening early and as soon as possible to tackle problems emerging for children, young people and their families or with a population at risk of developing problems. Early intervention may occur at any point of a child or young person's life.

Grasping the Nettle: Early Intervention for Children, Families and Communities' C4EO, p4.

The Plan also works to the following definition of Family Support:

Family Support is both a style of work and a set of activities that reinforce positive informal social networks through integrated programmes. These programmes contain statutory, voluntary, community and private services and are generally provided to families within their own homes and communities. The primary focus of these services is on early intervention, aiming to promote and protect health, wellbeing and rights of all children, young people and their families. At the same time, particular attention is given to those who are vulnerable or at risk.

Understanding Family Support; Policy Practice and Theory',
Canavan, Pinkerton, Dolan, 2016, p20.



PARTNERSHIP MEMBERS

Statutory Sector	
<p>Department of Health Strategic Planning & Performance Group</p> <p>Public Health Agency</p> <p>Health and Social Care Trusts</p> <p>NI Housing Executive</p> <p>Probation Board NI</p> <p>Police Service NI</p> <p>Youth Justice Agency</p>	<p>Department of Education</p> <p>Education Authority NI</p> <p>Council for Catholic Maintained Schools</p> <p>SOLACE</p> <p>Safeguarding Board NI</p> <p>Department for Communities</p>
Voluntary Sector	
<p>Children in NI</p> <p>Action for Children</p> <p>Include Youth</p> <p>Action Mental Health</p>	<p>Barnardo's</p> <p>National Children's Bureau</p> <p>Bytes Project</p> <p>ASCERT</p>
Community Sector	
<p>Dry Arch Children's Centre</p> <p>Lower Ormeau Residents Action Group</p>	<p>Bolster Community</p> <p>Mae Murray Foundation</p>
BAME Sector	
<p>Wah Hep Chinese Community Association</p>	

**** Wider CYPSP Membership** - There is a broader range of organisations from across the community, voluntary and statutory sectors participating at Outcomes Group and Locality Planning levels.



APPENDIX 4

CHILDREN’S SERVICES PLANNING TEAM

Maxine Gibson	Children’s Services Planning Professional Advisor
Bronwyn Campbell	Regional Lead for Family Support Hub Network
Valerie Maxwell	Children’s Services Planning & Information Manager
Vacant	Regional Locality Planning Coordinator
Sharon McMinn	Children’s Services Planning Support Officer
Louise Dickson	Children’s Services Planning Support Officer
Yvonne Neill	Children’s Services Planning Information Officer

