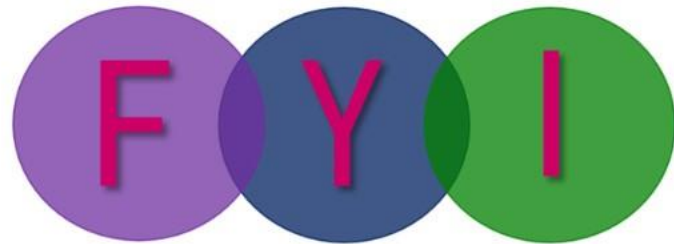


# SOUTHERN AREA LOCALITY PLANNING GROUPS



**ISSUE 112**  
5th October 2023



## WELCOME

Welcome to Issue 112 of our fortnightly newsletter, 'FYI' (For Your Information).

As we move into autumn, we will continue to promote advice and support services for families who are more adversely affected by the cost of living crisis. Please make sure to share these with families with whom you work. We also welcome all information which may benefit children, young people and families, so please keep us informed of such services.

Views are being sought on the recommendations of the report of the Independent Review of Children's Social Care Services in Northern Ireland, conducted by Professor Ray Jones. Responses are welcome from anyone with an interest in or views on the subject covered by this consultation, so please respond if relevant - See [page 20](#) for further details.

As always, please submit any flyers or information for the next issue of 'FYI' by close of play on the Tuesday before 'FYI' is released.

Locality Development Team, Southern Area

## IN THIS ISSUE

Pages 3 to 31

[Southern Trust Area \(CYPSP Updates | Training | Workshops | Events | Webinars | Parenting Programmes | Funding | Jobs | Forums | Consultations | Reports | Resources | Family Support | Fostering | Health\)](#)

Page 32

[ABC Council Area](#)

Page 33

[Armagh LPG Area](#)

Page 34

[Craigavon LPG Area](#)

Pages 35 to 39

[Newry & Mourne LPG Area](#)

Pages 40 & 41

[South Armagh LPG Area](#)

Pages 42 & 43

[Dungannon LPG Area](#)

Page 44

[Newsletter Submission Guidelines](#)

Page 45

[Important LPG Member Information](#)

Page 46

[Next Issue Key Dates](#)

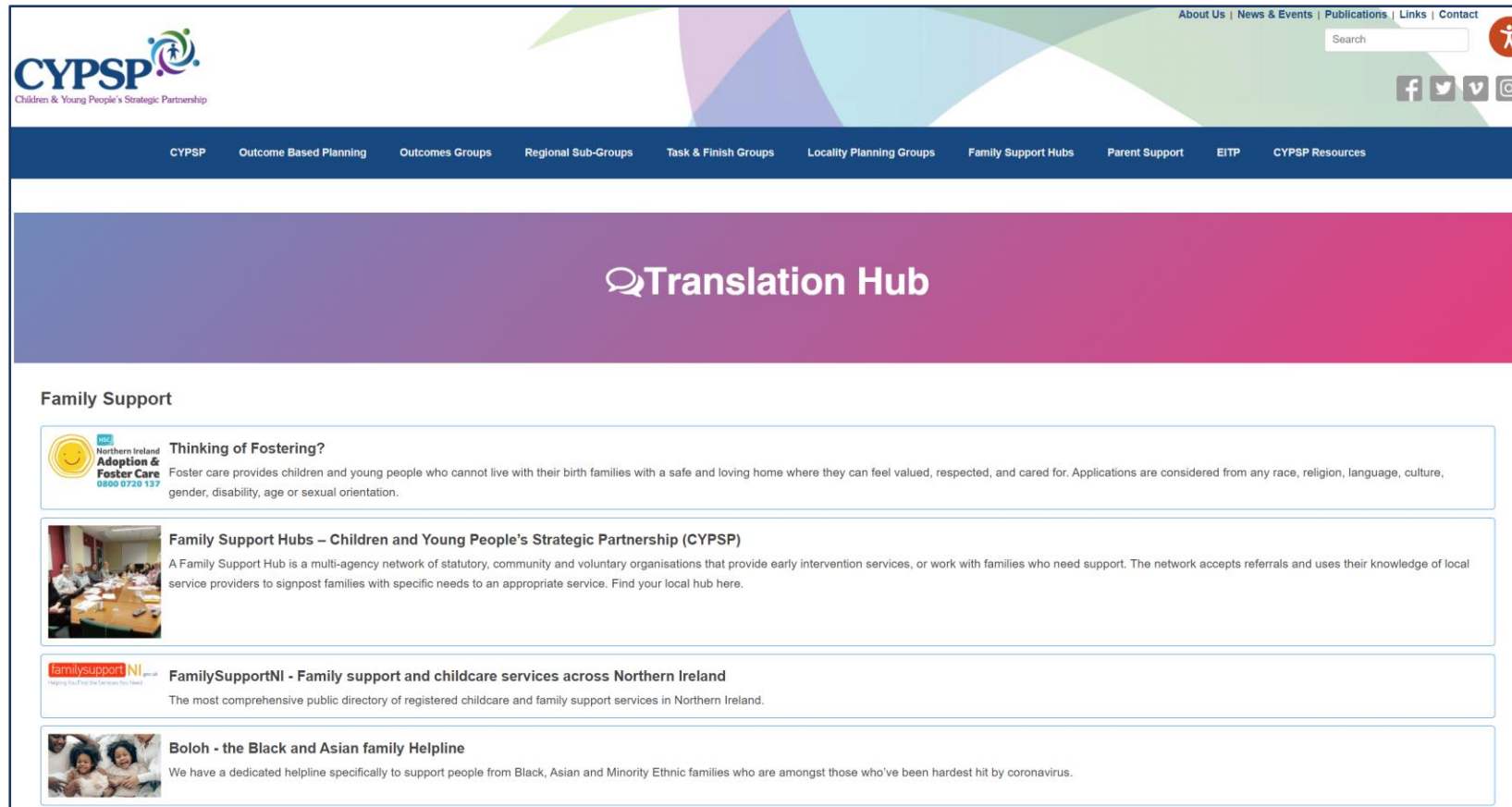




Visit the **CYPSP Youth Wellness Web**, Northern Ireland's central online emotional, mental health & wellbeing resource, designed by young people for young people (parents & teachers also), updated regularly with loads of advice, info & signposting to services, videos & free mental health programmes

Don't miss out!

Click [HERE](#)



The screenshot shows the CYPSP Translation Hub website. At the top, there is a navigation bar with links: About Us | News & Events | Publications | Links | Contact. Below this is a search bar and social media icons for Facebook, Twitter, YouTube, and Instagram. The main header area is a large purple banner with the text "Translation Hub" and a speech bubble icon. Below the banner, the "Family Support" section is highlighted. It contains four items:

- Thinking of Fostering?**: A box with a Northern Ireland Adoption & Foster Care logo (0800 0720 137) and text stating that foster care provides a safe and loving home for children and young people who cannot live with their birth families.
- Family Support Hubs – Children and Young People's Strategic Partnership (CYPSP)**: A box with a photo of a meeting and text explaining that a Family Support Hub is a multi-agency network providing early intervention services.
- FamilySupportNI - Family support and childcare services across Northern Ireland**: A box with a FamilySupportNI logo and text stating it is the most comprehensive public directory of registered childcare and family support services in Northern Ireland.
- Boloh - the Black and Asian family Helpline**: A box with a photo of two children and text stating it is a dedicated helpline to support people from Black, Asian and Minority Ethnic families.

We have added new information to the **Family Support Section** of our **Translation Hub**  
 For Fostering Network Info., Top Tips on Parenting, Family Mediation NI Information &  
 Useful Info. on Foodbanks, visit [HERE](#)  
 Have a look, open the ReachDeck icon, click on the language button, view drop down and  
 change language



Our funding restrictions are such that this training is only available to those who work/volunteer for a **voluntary, charitable, faith or community based organisation**

To view all training dates, visit [HERE](#)

### Upcoming Training Courses

**Designated Officer  
(Zoom)**

Tue 10th Oct  
09:30 - 12:30

**Supporting Behaviours  
& Emotions in Early Years**

Wed 11th Oct  
10:00 - 15:30

**Professional Boundaries  
(Zoom)**

Tue 17th Oct  
09:30 - 12:30

**School Based Anxiety  
(Zoom)**

Wed 18th Oct  
09:30 - 12:30



Children  
in Northern  
Ireland



[www.ci-ni.org.uk/funded\\_courses](http://www.ci-ni.org.uk/funded_courses)



Community  
Sector  
Training



## SAFEGUARDING CHILDREN

Good practice training, free to community, voluntary and youth groups

Our flexible, community-focused training will support you in building a 'safeguarding sound' organisation, by equipping your volunteers and staff with the awareness they need.

- » Delivered in your venue
- » Local community trainers
- » Evening, weekend or daytime sessions
- » Free of charge to community, voluntary and youth groups in the Southern Trust area



“Trainer was experienced and confident”

“Straight to the point information”

“A very informative course. I enjoyed it from start to finish... it will benefit our organisation greatly”

**HSC** Southern Health and Social Care Trust  
Quality Care - for you, with you



Community  
Sector  
Training

“...organisations will need to assure themselves and everyone who comes in contact with them, that the organisation is committed to best safeguarding practice”

*Adult Safeguarding: Prevention and Protection in Partnership (DHSSPS/DOJ 2015)*

## ADULT SAFEGUARDING AWARENESS

Good practice training for community and voluntary groups

All community groups providing activities for adults are expected to meet minimum standards to safeguard adults at risk of harm. This starts with increasing your awareness of harm through abuse, exploitation and neglect.

This short, 2 hour course will:

- » Increase your awareness of abuse issues
- » Advise how and when to report concerns
- » Outline the responsibilities of groups
- » Signpost to further support and training available



Free to community and voluntary groups in the Southern HSC Trust area

**Contact:** Community Sector Training  
t. 028 3756 1440 or 1441  
e. [cst.training@southerntrust.hscni.net](mailto:cst.training@southerntrust.hscni.net)  
w. [www.southerntrust.hscni.net/services/1986.htm](http://www.southerntrust.hscni.net/services/1986.htm)

*Community Sector Training is a community partnership service of the Southern Health and Social Care Trust*

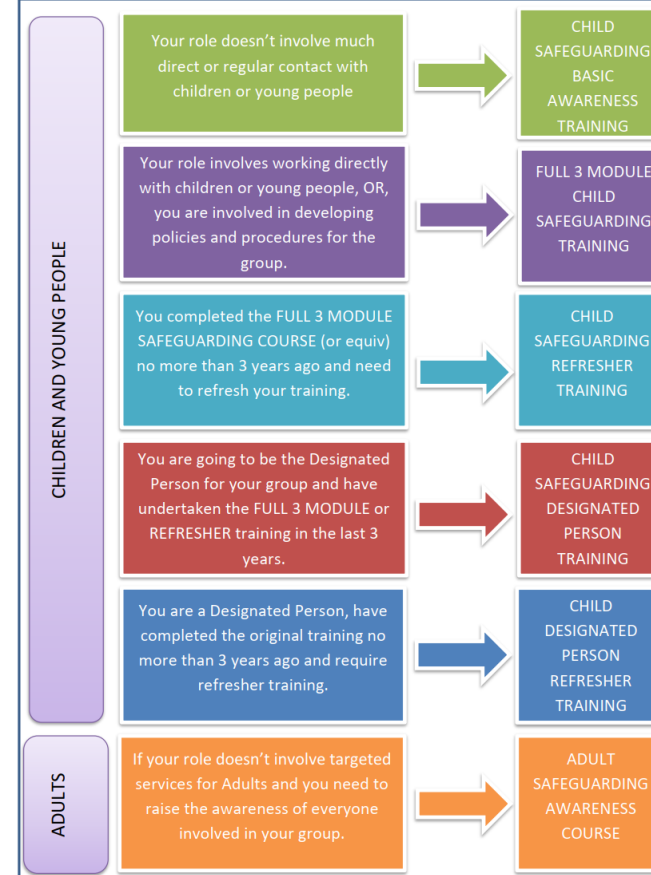
**HSC** Southern Health and Social Care Trust  
Quality Care - for you, with you



Community  
Sector  
Training



### What Safeguarding course do I need?



[cst.training@southerntrust.hscni.net](mailto:cst.training@southerntrust.hscni.net)

## National Energy Action NI Training Webinar's Autumn 2023



### Fuel poverty and Health in Northern Ireland

**Tuesday 17th October, 9:30am – 12:00pm**

The Fuel Poverty and Health webinar will look at the causes and impacts of fuel poverty with a focus on the health impacts. It aims to help delegates identify those likely to be at risk from fuel poverty and signpost to assistance.

This webinar is designed for anyone wanting to learn more about fuel poverty, its causes, and links with physical and mental wellbeing.

#### Course Objectives

- Explain causes of fuel poverty
- Identify health impacts of fuel poverty
- Explain causes of and remedies for condensation dampness
- Identify some of the assistance available to those at risk from fuel poverty

Following the webinar learners will also receive a booklet covering the course topics.

### Introduction to Domestic Energy Efficiency in Northern Ireland

**Thursday 9th November, 2:00pm – 4:30pm**

This course is designed to provide a basic introduction to domestic energy efficiency for frontline staff providing householders with energy efficiency advice. The course aims to make delegates aware of how householders may be able to use their energy more efficiently and reduce possible waste whilst still maintaining a warm and comfortable home.

#### The course covers

- Common heating appliances and controls
- Top tips for reducing energy use
- Heat loss in the home and how to reduce it
- Health impacts of living in a cold, damp home
- Sources of advice and assistance

Following the webinar learners will also receive a booklet covering the course topics

### Changing Energy Related Behaviour

**Tuesday 12th December, 9:30am – 12:00pm**

Habits and behaviours can be hard to change, but they can have a huge impact on how much a household spends on energy. The course will look at some of the theories and findings in the field of decision making, focusing specifically on simple practical things they can do to encourage people to act on the energy-related advice they receive.

This course is designed for frontline staff working in a range of organisations who are in a position to provide energy-related advice directly to householders either face-to-face or via the telephone.

#### Objectives

Explain:

- The barriers/cognitive biases discouraging householders from acting on energy advice
- Some of the key factors influencing decision making
- Actions to encourage householders to act on energy-related advice

Following the webinar learners will also receive a booklet covering the course topics.

### All webinars are 2.5hrs and CPD accredited

Webinars will be delivered live via Zoom (video conferencing facility) by our expert tutors to small groups to ensure a good level of interaction and support for learners. Participants will require a device with a camera and sound.



#### Fees

|                              | Cost per person |
|------------------------------|-----------------|
| Not for profit organisations | £80 + vat       |
| Commercial organisations     | £90 + vat       |

**FUNDED PLACES are available to non-commercial organisations such as local councils, housing associations, advice agencies etc. Learners must be frontline staff or volunteers that encounter and provide advice to those in or at risk of fuel poverty.**

#### Further Information

Contact: Nichola MacDougall, Training Officer, NEA NI  
Tel: 028 9023 9909  
E-mail: [Nichola.MacDougall@nea.org.uk](mailto:Nichola.MacDougall@nea.org.uk)



[Nichola.MacDougall@nea.org.uk](mailto:Nichola.MacDougall@nea.org.uk)

**FREE TRAINING**

## Online Safety Training For Schools

Insights, resources and tools to educate, empower and protect your entire community

**FREE ONLINE SAFETY TRAINING**

Reserve your place

01:15

**ineqe**  
SAFEGUARDING GROUP

Department of Education  
www.education-ni.gov.uk

**ea** Education Authority

**SBNI**  
Safeguarding Board for Northern Ireland

The Department of Education funded **Safer Schools NI** team are delivering free online safety training for schools  
Find out more [HERE](#)



## Investing in the Community & Voluntary Sector

### Stakeholder Engagement Workshops

Promoting Wellbeing Division fund a range of contracts and services across the Trust area to support health and wellbeing through early intervention and prevention.

Join our workshop discussions to review where and how we channel this funding in the future, to help consolidate and strengthen our investment in the community and voluntary sector.

Workshops are open to all stakeholders across the Trust including community and voluntary sector groups, service users, carers, funders, HSC staff and our statutory partners.

Email [PWB.mailinglist@southerntrust.hscni.net](mailto:PWB.mailinglist@southerntrust.hscni.net) to RSVP and receive venue details.

#### Workshop dates

**6 October, 10am-1pm** – Lurgan  
**11 October, 10am-1pm** – Dungannon  
**25 October, 2-5pm** – Newry

An online workshop may also be scheduled subject to interest. Please RSVP.



[PWB.mailinglist@southerntrust.hscni.net](mailto:PWB.mailinglist@southerntrust.hscni.net)



## Two Hour Session on Brain Development

### Who is it for?

**Parents/Carers of Adolescents** living in the Southern Trust Area

**Learning about Teenage Brain Development will support you to understand why:**

- Teenagers feel emotions/anxiety so intensely.
- Teenagers have difficulty reading faces, gestures and emotions of others.
- Why social acceptance and rejection by their peers matters
- Why the conflict with Parents
- Risk taking versus a time to take risks.
- Why their sleep pattern changes.

### When is it on?

Wednesday 25<sup>th</sup> October 2023, 7-9pm online via MS Teams

### How do I apply?

For further information or to book a place please contact

[lisa.lenaghan@southerntrust.hscni.net](mailto:lisa.lenaghan@southerntrust.hscni.net)



[lisa.lenaghan@southerntrust.hscni.net](mailto:lisa.lenaghan@southerntrust.hscni.net)



## Two Hour Session on Brain Development

For

**Expectant Parents & Parents of Babies, Toddlers & Young Children**

**Learning about your baby/child's brain development may support to:**

- Cope with a crying baby
- Manage your baby to settle/soothe
- Normalise and manage tantrums/anxiety
- Enjoy tummy time, play and mealtimes
- Build a positive relationship with your baby/child

### What does it cover?

- How the baby's brain develops in the context of a relationship with Parent/Carers.
- Activities to support the parent-child relationship
- Early Social and Emotional Development/Language Skills/Turn Taking/Tantrums/Separation anxiety/Building Early Resilience

### When is it on?

Thursday 26<sup>th</sup> October 2023, 10-12 midday, online via MS Teams

### How do I apply?

For further information or to book a place please contact

Email: [lisa.lenaghan@southerntrust.hscni.net](mailto:lisa.lenaghan@southerntrust.hscni.net) Tel: 07841970432



[lisa.lenaghan@southerntrust.hscni.net](mailto:lisa.lenaghan@southerntrust.hscni.net)

## Bonding with Baby Before Birth & Beyond

Thursday 12<sup>th</sup> October  
9.30am - 1pm Online

Save the date! We are delighted to announce two keynote speakers: Dr. Suzanne Zeedyk, Research Scientist, Connected Baby, and Sally Hogg, Senior Research Fellow, Centre for Research on Play in Education, Development and Learning (PEDAL).

This is a partnership event, co-hosted by members of the Regional Infant Mental Health Implementation Group, including the Public Health Agency, Health and Social Care Trusts, and voluntary/community members of the Stronger from the Start Alliance.



[www.eventbrite.co.uk/e/bonding-with-baby](https://www.eventbrite.co.uk/e/bonding-with-baby)



**SOUTHERN AREA  
MH  
MEN'S HEALTH  
STEERING GROUP**

The Southern Area Men's Health Group invites you to their free Men's Health Seminar

**'GOODIE BAGS' FOR ALL PARTICIPANTS**

## WORTH THE RISK

Men and Risk Taking - the Good, the Bad and the Ugly!

**Friday 17th November 2023, 9.30am to 1.30pm**  
Lough Neagh Discovery Centre, Craigavon, Co. Armagh

**GUEST SPEAKER:**  
**INTERNATIONAL ADVENTURER, RICHARD DOUGAN**

*Event also includes workshops, fun activities and finishes with a free lunch*

Numbers are strictly limited. To book a place, contact Donna in YouthAction NI at  
Email: [donna@youthaction.org](mailto:donna@youthaction.org) | Tel: 028 3751 1624



[donna@youthaction.org](mailto:donna@youthaction.org)



Thursday, 12 October

## Online Safety Live - Northern Ireland

Bringing the latest in Online Safety to your doorstep. The UK Safer Internet Centre are delivering a FREE Online Safety update

By UK Safer Internet Centre  
831 followers

Follow



|                   |               |   |   |
|-------------------|---------------|---|---|
| General Admission | -             | 1 | + |
| Free ⓘ            | 935 Remaining |   |   |

Reserve a spot



[www.eventbrite.co.uk/e/online-safety-live-northern-ireland-tickets-698981361067](https://www.eventbrite.co.uk/e/online-safety-live-northern-ireland-tickets-698981361067)

### Teen programmes

**Programme:** **Odyssey Parenting Your Teen x 2 Prog's**

**Attendees:** Parents and Carers  
**Start date:** **Programme 1—Tues 26th Sept 2023**  
Priority for Armagh & Dungannon Area

**Programme 2—Wed 24th Jan 2024**  
Priority for Craigavon & Banbridge Area

**Duration:** 8 Weeks (7pm—9pm)  
**Location:** Face to face-to be confirmed  
**Facilitators:** Parenting NI  
**Enquiries/Referrals:** 080 880 10722 (Freephone)

**Programme:** **Parents Plus Special Needs Programme**

**Start date:** Tues 3rd October 2023  
**Duration:** 7 weeks (10am—12.30pm)  
**Location:** Newry Teachers Centre  
**Attendees:** Parents/carers of young people 11-18 years with a learning disability in Newry/Mourne area  
**Facilitators:** Parenting Partnership and Newry MDT Team  
**Enquires/Referrals:** Parenting Partnership— 07880474747  
[parenting.partnership@southerntrust.hscni.net](mailto:parenting.partnership@southerntrust.hscni.net)  
Newry GP MDT Team—07503937693  
[john.flett@southerntrust.hscni.net](mailto:john.flett@southerntrust.hscni.net)

**Programme:** **Parents Plus Special Needs Programme**

**Start date:** Tues 12th September 2023  
**Duration:** 7 weeks (10am—12.30pm)  
**Location:** Online  
**Attendees:** Parents/carers of young people 11-18 years in the Southern Trust with a confirmed Autism diagnosis.  
**Facilitators:** Clanrye  
**Enquires/Referrals:** [Claire.convery@clanryegroup.com](mailto:Claire.convery@clanryegroup.com)  
07483 059876

**Programme:** **Parents Plus Special Needs Programme**

**Start date:** Thurs 1st Feb 2024  
**Duration:** 7 weeks 10am—12.30pm  
**Location:** Face to face-to be confirmed  
**Attendees:** Parents/carers of young people 11-18 years in the Southern Trust with a confirmed Autism diagnosis.  
**Facilitators:** Clanrye and Parenting Partnership, Southern Trust  
**Enquires/Referrals:** Clanrye 07483 059876  
[Claire.convery@clanryegroup.com](mailto:Claire.convery@clanryegroup.com)  
Parenting Partnership— 07880474747  
[parenting.partnership@southerntrust.hscni.net](mailto:parenting.partnership@southerntrust.hscni.net)

### Additional contacts / information

**Lorraine O'Neill**

Parenting Partnership Manager  
CASS Centre, Lough Road, LURGAN  
**t:** 028 38 310920 / 07880 474747  
**e:** [lorraine.oneill2@eani.org.uk](mailto:lorraine.oneill2@eani.org.uk)

**Martina McCooey**

Child Development Interventions Co-ordinator  
Southern Health & Social Care Trust  
Promoting Wellbeing Division  
**t:** 028 3756 4462 / 07795 450278  
**e:** [martina.mccooey@southerntrust.hscni.net](mailto:martina.mccooey@southerntrust.hscni.net)

For further information on these and other programmes please visit our webpage:

[www.cypsp.hscni.net/ebpp/](http://www.cypsp.hscni.net/ebpp/)



### Evidence Based

## PARENTING SUPPORT PROGRAMME DELIVERY

*Giving every child  
the best  
start/opportunity in life  
in life.*



**2023 / 2024  
Southern Trust**

Information is now available on the range of **evidence based parenting programmes** available to families of children and young people (pre birth to 18 year) living in the Southern Trust Area

Programmes are available for families of typically developing and children/young people with special needs and they run from September 2023 to June 2024

Please note that multiple programmes may be advertised under one category

For further info. visit [HERE](#)

| Early Years | Programme Name   | Attending                              | Start Date  | Duration / Time                       | Location  | Referrals/Enquires   | Additional info  |
|-------------|--|--|---|---------------------------------------|---|--|--|
|             | Mellow Bumps<br><u>x 4 Programmes</u>  | For Mums to be                         | 1.Tues 29 Aug '23<br>2.Wed 1st Nov '23<br>3.Thurs 11th Jan '24<br>4.Tues 23 April '24 | 7 weeks<br>6.30pm—8.30pm              | Online  | E: <a href="mailto:mellow.parenting@southerntrust.hscni.net">mellow.parenting@southerntrust.hscni.net</a><br>t: 028 3756 4489  | Referrals taken at any time for later programmes<br>For Mums to be 20+ weeks gestation   |
|             | Mellow Dads  | For Dads to be                         | Fri 6 Oct '23   | 7 weeks<br>10.30—12.30pm              | Splash Surestart Craigavon                        | e: <a href="mailto:mellow.parenting@southerntrust.hscni.net">mellow.parenting@southerntrust.hscni.net</a><br>t: 028 3756 4489  | Referrals considered from across Southern Trust area   |
|             | Solihull 'Understanding Your Child' (0-5 years)  | Parents/ Carers                        | Wed 17 Jan 24   | 10 weeks<br>7pm—9pm                   | Online  | Enquiries / Referrals: Parenting Partnership<br>t: 07880 474747<br>e: <a href="mailto:parenting.partnership@southerntrust.hscni.net">parenting.partnership@southerntrust.hscni.net</a>   | For parents of children in Day-care, Child-minding & Nursery settings across the Southern Trust<br><u>Delivery by Parenting Partnership</u>  |
|             | Parent/Infant Programme Suite ( 0-4 months)<br><u>x 4 programmes</u><br>Inc of Incredible Years Baby | Parents/ Carers & Babies               | Newry, A & D (Moy) & Banbridge-Oct '23<br><br>Craigavon Nov 2023                      | 19 weeks (IY Baby 8 weeks)            | Newry A & D Banbridge<br><br>Craigavon/ Portadown | <a href="mailto:info@homestartnewry.com">info@homestartnewry.com</a> 028 3026 6139<br><a href="mailto:homestartad@btconnect.com">homestartad@btconnect.com</a> 028 8778 9489<br><a href="mailto:homestartbanbridge1@btconnect.com">homestartbanbridge1@btconnect.com</a><br>028 4062 6234<br><a href="mailto:homestart.craigavon@btopenworld.com">homestart.craigavon@btopenworld.com</a><br>028 3834 5357 | For parents/babies 0-4 months <u>living outside Sure Start areas</u> in the Southern Trust. This face to face Parent/Infant Programme Suite includes Incredible Yrs, Infant massage, sensory play and sleep support  |
|             | Incredible Years Baby (0-4 months)   | Parents/ Carers & Babies               | Thurs 25 April 24   | 8 weeks<br>10am-12pm                  | Newry Teachers Centre                             | Enquiries / Referrals:<br>t: 07880 474747<br>e: <a href="mailto:parenting.partnership@southerntrust.hscni.net">parenting.partnership@southerntrust.hscni.net</a><br><u>or</u> <a href="mailto:jenna.hanna.Z00536@gp.hscni.net">jenna.hanna.Z00536@gp.hscni.net</a><br>t: 07385462726   | Preference given to parents of babies 0-4 months at time of programme in the Newry & Mourne locality.<br><u>Delivery Partners:</u> GP MDT Team and Parenting Partnership   |
|             | Incredible Years Autism & Speech & Lang Delay Programme (2--6 years)<br><br><u>x 3 Programmes</u>    | Parents/ Carers<br><br>Parents/ Carers | Thurs 14 Sept '23<br><u>or</u><br>Thurs 11th Jan 24<br><br>Wed 31 Jan 24              | 14 weeks<br>10am—12pm<br><br>14 Weeks | Online<br><br>STEP Dungannon                      | Enquiries / Referrals: Parenting Partnership<br>t: 07880 474747<br>e: <a href="mailto:parenting.partnership@southerntrust.hscni.net">parenting.partnership@southerntrust.hscni.net</a><br><br>STEP<br>028 87750211<br><a href="mailto:Bernadetta.viana@stepni.org">Bernadetta.viana@stepni.org</a>   | For parents of children 0-6 with a confirmed Autism diagnosis<br><u>Delivery Partners:</u> Parenting Partnership & Southern Trust Autism Services<br><br>For parents/carers of children with a confirmed Autism diagnosis living in the Dungannon and Coalisland Neighbourhood Renewal Areas |


[martina.mccooey@southerntrust.hscni.net](mailto:martina.mccooey@southerntrust.hscni.net)

|            | Programme Name                           | Attending       | Start Date        | Duration / Time       | Location | Referrals/Enquires   | Additional info   |
|------------|--|-----------------|-------------------|-----------------------|----------|--|---|
| School Age | Incredible Years School Age (5—12 years) | Parents/ Carers | Wed 13 Sept 23    | 12 weeks<br>10am-12pm | Online   | Enquiries/Referrals: Parenting Partnership<br>t: 07880 474747<br>e: <a href="mailto:parenting.partnership@southerntrust.hscni.net">parenting.partnership@southerntrust.hscni.net</a>   | <u>Delivery Partners:</u> Parenting Partnership & Bolster Community. Priority for families from the N & M area        |
|            | Incredible Years School Age (5-12 years) | Parents/ Carers | Tues 19 Sept 23   | 12 weeks<br>10am-12pm | Online   | Enquiries / Referrals: Parenting Partnership<br>t: 07880 474747<br>e: <a href="mailto:parenting.partnership@southerntrust.hscni.net">parenting.partnership@southerntrust.hscni.net</a> | <u>Delivery Partners:</u> BCM & Parenting Partnership. Priority to families from A & D area                           |
|            | Incredible Years School Age (5-12 years) | Parents/ Carers | Wed 10 Jan 24     | 12 weeks<br>10am-12pm | Online   | Enquiries / Referrals: Parenting Partnership<br>t: 07880 474747<br>e: <a href="mailto:parenting.partnership@southerntrust.hscni.net">parenting.partnership@southerntrust.hscni.net</a> | <u>Delivery Partners:</u> Parenting Partnership & Parenting NI. Priority for families from C & B area                 |
|            | Incredible Years School Age (5-12 years) | Parents/ Carers | Wed 10 April 24   | 12 weeks<br>7—9pm     | TBC      | Enquiries / Referrals: Parenting Partnership<br>t: 07880 474747<br>e: <a href="mailto:parenting.partnership@southerntrust.hscni.net">parenting.partnership@southerntrust.hscni.net</a> | <u>Delivery by:</u> Parenting Partnership Available to families across the Southern Trust                             |
|            | Incredible Years School Age (5-12 years) | Parents/ Carers | Thurs 11 April 24 | 12 weeks<br>10am—12pm | TBC      | Enquiries / Referrals: Parenting Partnership<br>t: 07880 474747<br>e: <a href="mailto:parenting.partnership@southerntrust.hscni.net">parenting.partnership@southerntrust.hscni.net</a> | <u>Delivery Partners:</u> Parenting Partnership & Tier 2 CAMHS. Available to families across the Southern Trust Area. |



[martina.mccooey@southerntrust.hscni.net](mailto:martina.mccooey@southerntrust.hscni.net)



## BBC Children in Need Emergency Essentials Programme

BBC Children in Need Emergency Essentials Programme supports children and young people who are facing exceptionally difficult circumstances, and is delivered by Family Fund Business Services

The programme provides items that meet a child's most basic needs such as a bed to sleep in, a cooker to provide a hot meal and other items or services critical to a child's wellbeing

All applications must be made by a registered referrer

## Programme Status Update

The BBC Children in Need Emergency Essentials Programme has now reopened, operating as normal, and we aim to process applications within 10 working days

As usual, please only contact us about an application if absolutely necessary, to prevent delays to that application being processed  
You can contact us via email (stating your application ID if possible) at [emergencyessentials@familyfundservices.co.uk](mailto:emergencyessentials@familyfundservices.co.uk) or call us on **01904 550011** between 9:30am and 3:00pm, Monday to Friday

## **NO RECOURSE FUND**

**Support for migrant victims of domestic abuse  
with  
No Recourse to Public Funds**

Southall Black Sisters and our partners across the UK have been awarded funds to operate the Support for Migrant Victims Scheme (SMV), a one-year project to provide temporary support to migrant survivors of abuse and to build a better understanding of their needs.

### **The scheme and eligibility**

This Support for Migrant Victims (SMV) pilot scheme is now open for referrals. It will provide support to up to 500 migrant victims of domestic and other forms of gender-related abuse (and their children) who are subject to the No Recourse to Public Funds (NRPF) Rule. Priority will be given to those survivors who do not currently have an established route to financial support although in some exceptional circumstances bridging support will be available to those who are otherwise eligible for the DDVC concession, asylum support, local authority or other state assistance.

### **Referral Pathways**

The SMV scheme will only accept referrals from third sector agencies, local authorities and statutory bodies via the following referral pathways:

For referrals in Northern Ireland, contact Foyle Women's Aid Northern Ireland at [info@foylewomensaid.org](mailto:info@foylewomensaid.org). Alternately they can be contacted via telephone at 028 7141 6800.

JOB | PART TIME

## Youth Development Worker Craigavon Travellers Support Commitee

Thursday / 26 October 2023 12:00pm

**Job Role:** Development

**Salary:** £25509 pro rata

**Hours per week:** 25.00



JOB | PART TIME

## Youth Worker Craigavon Travellers Support Commitee

Thursday / 26 October 2023 12:00pm

**Job Role:** Development

**Salary:** £22196 pro rata

**Hours per week:** 20.00



JOB | PART TIME

## Homework Support Worker Craigavon Travellers Support Commitee

Thursday / 26 October 2023 12:00pm

**Job Role:** Development

**Salary:** £11.50 per hour

**Hours per week:** 9.00



[Youth Development Worker](#)



[Youth Worker](#)

[Homework Support Worker](#)

**HSC** Southern Health  
and Social Care Trust  
*Quality Care - for you, with you*

Personal and Public  
Involvement (PPI)



Involving you,  
improving care

## Join our Maternity Voices Partnership (MVP)

PREGNANCY. BIRTH. POSTNATAL  
MIDWIFERY. OBSTETRICS. COMMUNITY  
ANTENATAL. MLU. HOME. HOSPITAL  
INDUCTION. LABOUR. CAESAREAN

SHSCT  
Maternity Voices  
Partnership



We want you to get involved!

Do you have experience of  
SHSCT maternity services within  
the past four years and want to  
work in partnership to help  
improve services?

We are planning to have a few  
informal information sessions to  
give you the opportunity to meet  
some of our team and find out  
more about our MVP.

Wednesday 18th October 10am  
South Lakes Leisure Centre, Craigavon

Saturday 21st October 10am  
Mourne Country Hotel, Newry

If you would like to join the MVP or would like any further  
information please contact the User Involvement Team

✉ [user.involvement@southerntrust.hscni.net](mailto:user.involvement@southerntrust.hscni.net)

☎ 028 3756 4474



[user.involvement@southerntrust.hscni.net](mailto:user.involvement@southerntrust.hscni.net)

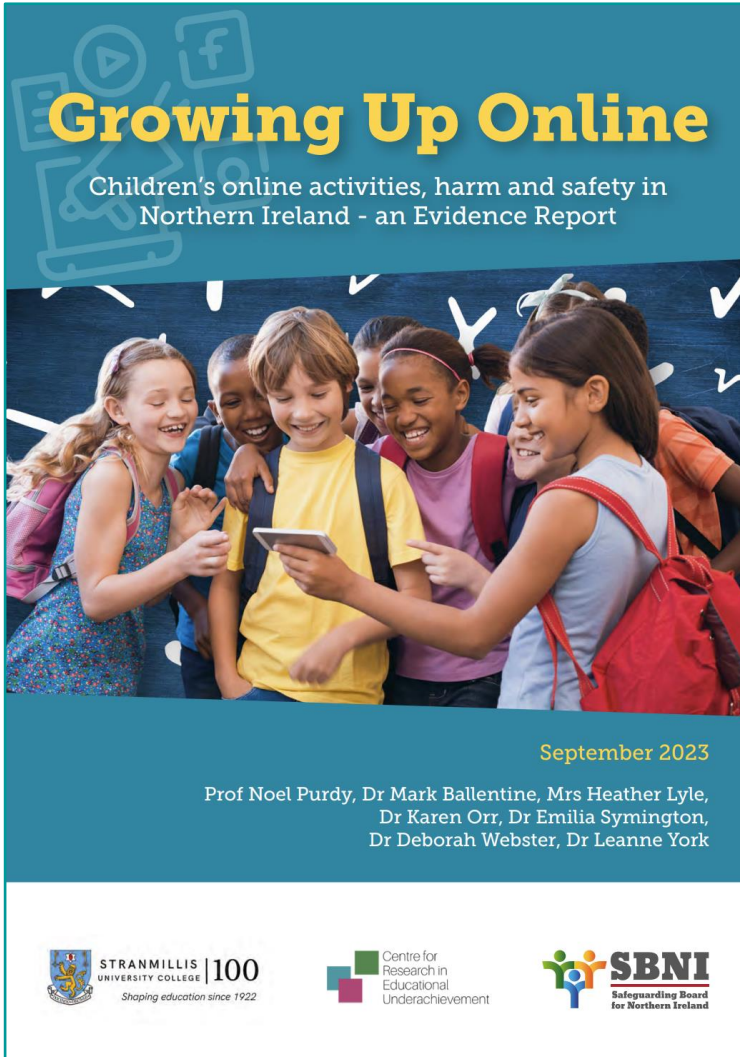
# THE NORTHERN IRELAND REVIEW OF CHILDREN'S SOCIAL CARE SERVICES — **REPORT** — PROFESSOR RAY JONES



# CONSULTATION - NOW OPEN!



[www.health-ni.gov.uk/consultations](http://www.health-ni.gov.uk/consultations)



On 21 September, the **SBNI** published a new research report entitled 'Growing Up Online: Children's online activities, harm and safety in Northern Ireland - An Evidence Report'

The research, draws together research from a survey of 6,841 children and young people aged 8-18, and focus groups and interviews with 95 participants including children and young people in mainstream primary and post-primary schools, special schools and youth club settings, as well as parents/carers, teachers/school leaders, and professionals working in the field of online safety



[www.stran.ac.uk/Growing-Up-Online.pdf](http://www.stran.ac.uk/Growing-Up-Online.pdf)



## Cost of Living Crisis

### ***A Guide to Locality Based Targeted Resources and Practical Support for Families and Children Struggling with the Current Cost of Living Crisis***

This is a live document and will be updated on a regular basis  
Updated 10 July 2023

The information in this guide has been provided by services.  
If you would like to include information about your service  
please email: [una.casey@hscni.net](mailto:una.casey@hscni.net)



## Resource Pack for Children & Young People

August 2023



<https://cypsp.hscni.net/cyp-resource-pack>



<https://cypsp.hscni.net/cost-of-living>



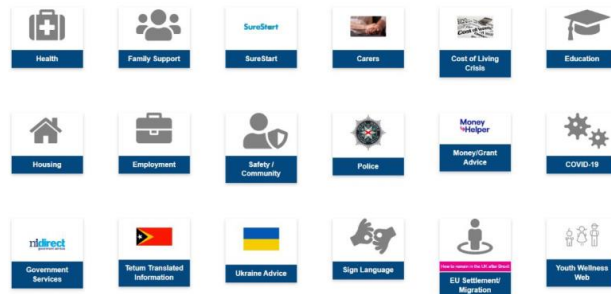
English



The CYPSP Translation Hub provides you with important information on Health, Education, Housing, Employment, Government Services, Cost of living, Contacts for support and much more.....



[www.cypsp.hscni.net/translation-hub](http://www.cypsp.hscni.net/translation-hub)



## Youth Wellness Web

A place where everyone deserves to be helped at any time, no matter how big or small the problem is!

If you're struggling, it's okay to reach out:

Visit  
[cypsp.hscni.net/youth-wellness-web/](http://cypsp.hscni.net/youth-wellness-web/)

Call Childline on:  
0800 1111

Call LIFELINE on:  
0808 808 8000

Text Shout:  
852558

Deaf & hard of hearing  
textphone users:  
18001 0808 808 8000

SCHOOL BULLYING  
WELLBEING  
BEREAVEMENT  
MENTAL HEALTH



<https://cypsp.hscni.net/translation-hub>



<https://cypsp.hscni.net/youth-wellness-web>



The SBNI, South Eastern Domestic and Sexual Violence Partnership, North Down and Ards Women's Aid, and Neep Pictures have produced an animation aimed at young people and adults called 'Technology and Domestic Abuse - Where is the Line?'

The animation was co-produced with young people who have lived experience of domestic abuse.



[https://www.youtube.com/watch?v=7Kmh5jtH\\_Lg](https://www.youtube.com/watch?v=7Kmh5jtH_Lg)



**The right support  
at the right time**

**PARENTS AND CARERS!**

Do you know that if your child attends College or University in Northern Ireland they can access free counselling?

And its simple to self refer to our counselling.

Just visit the Inspire Student Hub for more information.

[www.inspiresupporthub.org/students](http://www.inspiresupporthub.org/students)



[www.inspiresupporthub.org/students](http://www.inspiresupporthub.org/students)

**Parenting  
Additional  
Needs**

**Peer Support  
Group**

REMINDER



**WEDNESDAYS - ONLINE**

**9.30am - 10.30am**

For more information, email [hello@theparentrooms.co.uk](mailto:hello@theparentrooms.co.uk)  
or call 02895 380404



[hello@theparentrooms.co.uk](mailto:hello@theparentrooms.co.uk)



A safe place to feel heard

A nurturing space to make your own decisions

You lead the way....we can support you.

Remember, Parentline NI are #inyourcorner

**Opening Hours:**  
**Mon-Thurs 9am-9pm/Fri 9am-5pm/Sat 9am-1pm**  
**0808 8020 400**



Nurturing, inspiring, and helping parents grow.

Valuing parents, and encouraging them to value themselves.

Showing compassion, and holding parents through the tough times.

One caring conversation could make all the difference. Give us a call on 0808 80 20 400.

**Opening Hours:**  
**Mon-Thurs 9am-9pm/Fri 9am-5pm/Sat 9am-1pm**



We will stay with you, throughout your parenting journey.

You don't have to parent alone, we are here for you.

Standing shoulder to shoulder with parents, whatever you are facing.

**Opening Hours:**  
**Mon-Thurs 9am-9pm/Fri 9am-5pm/Sat 9am-1pm**  
**0808 8020 400**

 **0808 8020 400**

## Services Available Through The Hub May Include...



"The hub linked me with services I didn't know existed"

"It was so simple to make a referral and I got the help I needed"

"After a friend recommended that I contact the hub, I rang and spoke to the hub co-ordinator who helped me to make a self-referral"



## There Are 3 Family Support Hubs In the Southern Trust Area

### ARMAGH & DUNGANNON HUB

Pat McGeough  
Young People's Partnership Barnardos  
39A Abbey Street, Armagh  
BT61 7DY  
T: 028 37522380  
E: familysupporthub@barnardos.org.uk

### CRAIGAVON & BANBRIDGE HUB

Lisa Grant  
NIACRO  
26 Carleton Street, Portadown Co. Armagh  
BT62 3EP  
T: 028 38331168  
E: familysupporthub@niacro.co.uk

### NEWRY & MOURNE HUB

Allison Slater  
SPACE  
24 Monaghan Street, Newry  
BT35 6AA  
T: 028 30835764  
E: familysupporthub@space-ni.com

Believe in  
children  
Barnardo's



## Southern Area FAMILY SUPPORT HUB

*Many families need a little extra  
help sometimes*



## Information for Families



MSC Southern Health  
and Social Care Trust

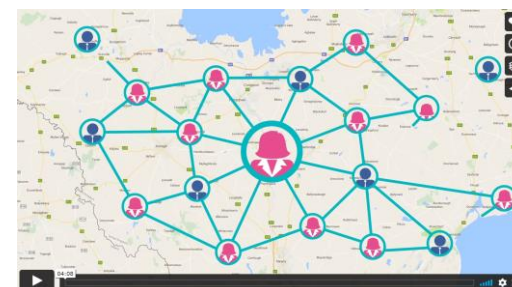


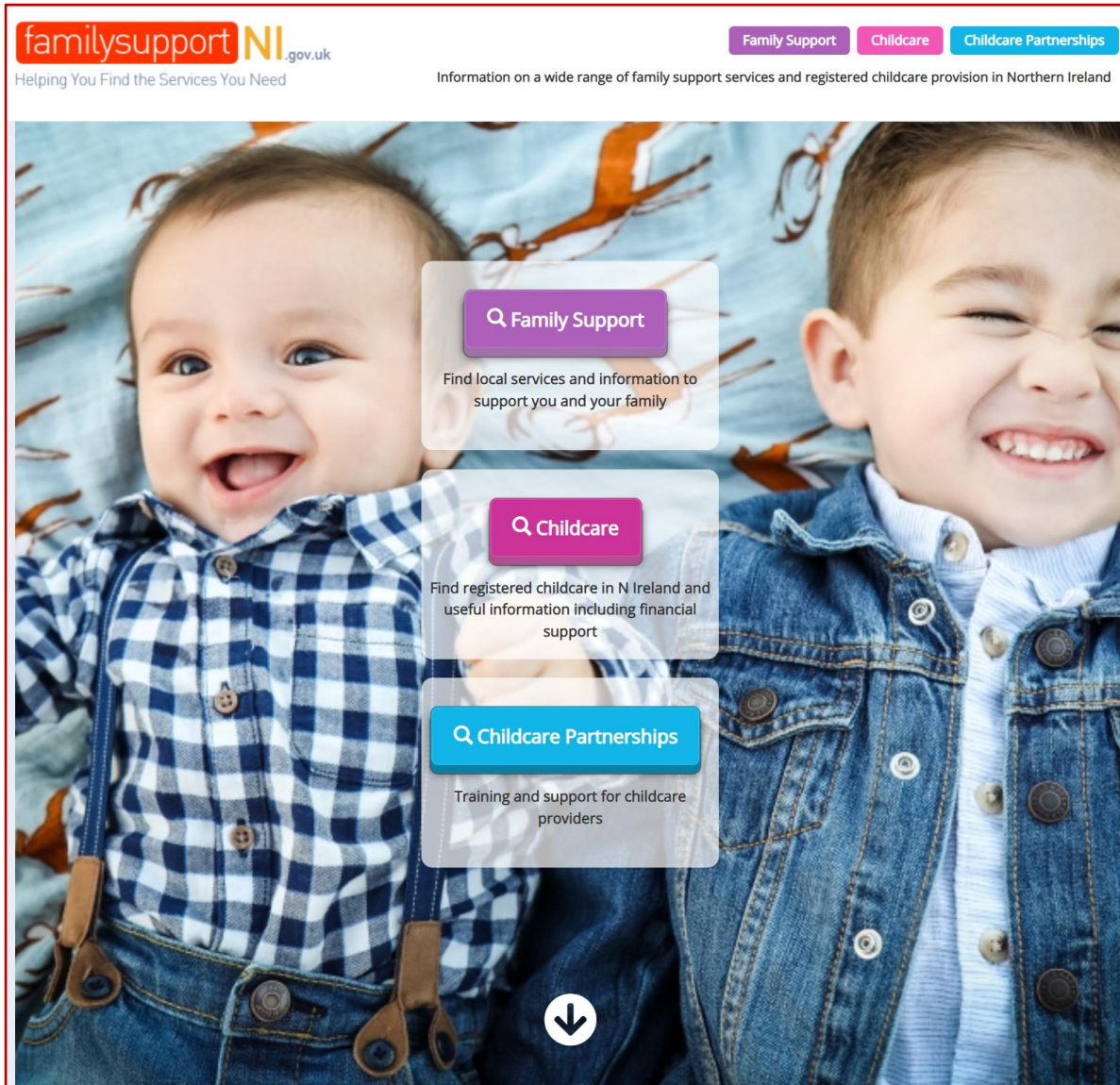
The 3 **Family Support Hubs** in the Southern Area continue to operate as normal and are open for referrals

Please make any referrals by e-mail [HERE](#)

Download the **August edition** of the **Family Support Hubs newsletter** [HERE](#)

Click on the below thumbnail to watch the **Southern Area Family Support Hub promotional video**





Check out the **Family Support NI** website [HERE](#)

A useful up-to-date online directory making it easier for people in NI to find out about **family support services** and **ALL REGISTERED childcare providers** in NI

If you require any more information about the website or would like some leaflets / posters, call **0845 600 6483**

Watch the **promotional animation clip** outlining the functions / benefits of the website [HERE](#)

If you provide a family support service in Northern Ireland and would like **details of your organisation / service included** on the Family Support NI website, click [HERE](#) to complete a short questionnaire and return the form to [info@familysupportni.gov.uk](mailto:info@familysupportni.gov.uk)



Jake<sup>o</sup>, age 10



Emma<sup>o</sup>, age 10

\*Names changed and stock images used to protect children's identity

## Could you foster?

We are seeking long-term foster homes in the southern area for Jake<sup>o</sup> and Emma<sup>o</sup>, both age 10.

Visit [adoptionandfostercare.hscni.net](https://adoptionandfostercare.hscni.net) for more details, or call us to register for the virtual information session on:

**Wednesday 4 October**  
**7pm-8pm (Jake) | 8pm-9pm (Emma)**

**0800 0720 137**  
[adoptionandfostercare.hscni.net](https://adoptionandfostercare.hscni.net)



## SPREAD THE WORD

shout it, blog it,  
print it, share it:  
help us spread the word

[Facebook](#)

[Instagram](#)

[X/Twitter](#)

Visit [HERE](#)

Could you foster Jake (10) or Emma (10)

Jake and Emma wait on families who could provide them with love and support for the rest of their childhoods

The children are not related; they need cared for by two separate foster care families who preferably live in or around the Southern Trust area

## COULD YOU VOLUNTEER WITH US?



**We're looking for mentors to support children & young people living in foster care**

Qualities of a mentor

Empathetic

Flexible

Positive & optimistic

Good communicator

Role model

Patient

Fun

Non-judgmental

- i** Mentors provide individual support to the children and young people, and help them discover and pursue their hobbies and interests.
- i** Mentors receive support from a Key Worker, reimbursement for travel & expenses and training
- i** Mentors are matched with a child or young person whom they will meet at least once per fortnight to do fun activities in the community
- i** Mentors must be aged 18 or over

**GET IN TOUCH**



**Katrina Lavery, Volunteer Coordinator**  
028 3756 6295



**PROUDLY  
INVESTING  
IN OUR  
VOLUNTEERS**



**HSC** Southern Health  
and Social Care Trust  
Quality Care - for you, with you



**028 3756 6295**

## Room for more



**Start your fostering  
journey with us**

Contact our friendly fostering team today:

**028 9046 0500** [fostercareni@actionforchildren.org.uk](mailto:fostercareni@actionforchildren.org.uk)

[actionforchildren.org.uk/fostering](https://actionforchildren.org.uk/fostering) [@AFCNIFostercare](https://www.facebook.com/AFCNIFostercare)

Action for Children, registered at 3 The Boulevard, Ascot Road, Watford WD18 8AG and registered as a charitable company limited by guarantee in England and Wales under number 4764232. Registered charity numbers 1097940/SC038092. © Action for Children 2023. 1644.



**[fostercareni@actionforchildren.org.uk](mailto:fostercareni@actionforchildren.org.uk)**

# AUTUMN VACCINES

The flu and COVID-19 vaccine will be offered to:

- Adults aged 65 years and over
- Residents in a care home
- Pregnant women
- Individuals in a clinical risk group\*
- Persons aged 12 to 64 who are household contacts\* or carers\*



## Autumn /winter vaccines - who is eligible

*\*as defined by green book*

How your vaccine  
will be delivered

**COVID-19  
vaccine**

**Flu vaccine**

**GPs**

- 65+
- Age 16 - 64 clinical risk group\*
- Pregnant women
- Age 16 - 64 who are carers\*
- Age 16 - 64 household contacts of immunosuppressed\*

- 65+
- Age 16 - 64 clinical risk group\*
- Pregnant women
- Children 2 - 4 yrs old
- 6 months to under 2 years clinical at risk\*
- Age 16 - 64 who are carers\*
- Age 16 - 64 close contacts of immunosuppressed\*

**Community  
Pharmacy**

- Care home residents and staff
- Frontline HSC workers
- 65+
- Pregnant women
- Age 18 - 64 clinical risk group\*
- Age 18 - 64 who are carers\*
- Age 18 - 64 household contacts of immunosuppressed\*

- Care home residents and staff
- Frontline HSC workers
- 65+
- Pregnant women
- Age 18 - 64 clinical risk group\*
- Age 18 - 64 who are carers\*
- Age 18 - 64 household contacts of immunosuppressed\*

**HSC Trusts**

- Frontline HSC workers
- 6 months - age 15 clinical risk group\*
- Age 12 - 15 who are carers\*
- Age 12 - 15 household contacts of immunosuppressed\*
- Pregnant women (via maternity)

- Frontline HSC workers
- Housebound via home visits
- Pregnant women (via maternity)

**In school**

- Children in primaries 1 to year 12



# The Incredible Life Carers Information and Wellness Event

SEAGOE HOTEL PORTADOWN

Tuesday 24th October 2023  
10am-2pm

Come down and meet representatives that offer services for  
those with additional needs and carers  
Any businesses, clubs, groups & charities that would like to book a  
table at the event. Please contact Natalie



[www.theincrediblelife.co.uk](http://www.theincrediblelife.co.uk)



[www.theincrediblelife.co.uk](http://www.theincrediblelife.co.uk)

Are you a parent/carers of a child with a  
diagnosis of ASD, ADHD or waiting on an  
assessment?

The MDT Social Work team in Rathfriland Health Centre are looking to  
hear from you, at a focus group to discuss with other parents/carers  
about supports that you would like in Rathfriland and the surrounding  
area.

Date: Wednesday 25th October 2023

Time: 10:30am—11:30am

Where: The Bowling Green, Rathfriland

If you would like to attend please contact Kellie O'Donnell on  
07385410811 or email [kellie.odonnell@southerntrust.hscni.net](mailto:kellie.odonnell@southerntrust.hscni.net)



[kellie.odonnell@southerntrust.hscni.net](mailto:kellie.odonnell@southerntrust.hscni.net)



**FAMILY**  
**TOTS & TEA**

Are you the parent or carer of a pre-school age child with additional needs?  
Would you and your child like to meet new friends who are on the same journey?

Tots and Tea is a group of friendly mums and children who are all on the first steps of their journey through disability.

Our experienced staff are on hand to offer support and advice whilst you and your child enjoy meeting future friends.

Every 2 weeks on a  
Wednesday morning  
10.30am-12noon

Markethill Masonic Hall  
Main St, Markethill, Armagh  
BT60 1PH

For further information call Catriona  
or Julie-Anne on 028 3083 5764

**BOLSTER COMMUNITY** The Community Foundation

 028 3083 5764



**Breastfeeding Support Group**

Thursdays @ 10am—11am  
Unit 21, ArKe Sure Start

Grab a well deserved cuppa & meet other  
breastfeeding mothers.

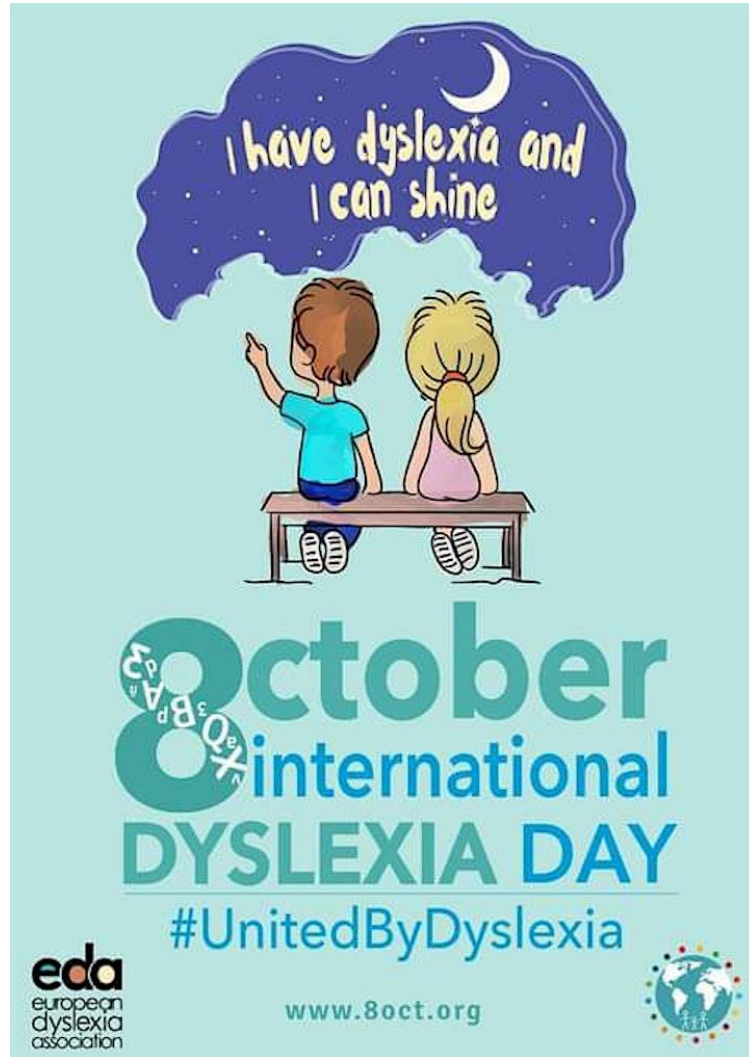
Support available from our trained Sure Start  
team.

Registered and non-registered  
breastfeeding mums of ArKe  
Sure Start are invited.  
Antenatal mums are welcome  
too!

**ArKe SureStart**

Unit 21, Armagh Shopping Centre, Bt61 7AE  
Tel: 028 37518569.

 028 37518569



Come along to the information event to celebrate **International Dyslexia Awareness Day** on the 8 October from 2-5pm at The Hub, Craigavon

Admission £5 per adult | Kids go free

All proceeds from event going to Children's Law Centre Belfast

The aim of the event is to Empower, Educate and Connect the parents/ caregivers of children who struggle to read, write and spell

No diagnosis of dyslexia required to attend event. We are going to change the narrative on how we as a society view dyslexia

Dyslexic brains have changed the world and will continue to do so!

- Information stalls from Children's Law Centre, Dyslexia Awareness NI, Nessy, Texthelp, Parentline, and Empower Project will be in attendance
- Watch the inspiring true story of eight year old Mike and his mother, Pat Jones, the founders of Nessy Learning, now made into an award-winning short film
- Arts & Crafts, Chocolate Meditation, Health Checks, Competitions, Raffle & Nominations
  - Free Popcorn, Refreshments & Goody Bags!

Tickets available [HERE](#)

An employability programme to assist and support individuals aged 16+ to enter the work force or return to employment.

**Funded by UK Government**

## Unlock your potential, get ready for work!

Suitable for individuals aged 16+ who may want to (re)enter the world of work and need support to achieve this goal. Including those who are:

- Over 50
- Women returning to work
- Involved in justice system or at risk
- Carers & Single Parents
- Individuals with a disability

### What's involved?

#### Qualifications

Numeracy, Literacy, ICT, Customer Service or Business Administration

#### Support

Personal Development, Health and Well-being, Community Engagement

#### Employability

Employability Support: Job search, CV, Applications, Interviews, Entrepreneurship Assistance to source employment Transition and in-employment support

**To find out more information contact:**

[clanryegroup.com](http://clanryegroup.com)
[nicola.o'loan@clanryegroup.com](mailto:nicola.o'loan@clanryegroup.com)
028 3089 8119

## FREE FAST-TRACK CUSTOMER SERVICE

A two-week fast track training in customer service and retail for those actively seeking employment.

**Funded by UK Government**

### WHAT'S INCLUDED?

- Level 1 Customer Service
- Help with completing application forms
- Assistance with completing CV's and interview preparation
- Guaranteed CV viewing from a collection of local employers

### TRAINING WILL BE HELD ON :

**9 - 20 October**  
9am - 3pm

**23 Oct - 3 Nov**  
9am - 3pm

**Clanrye Group Newry, Portadown & Armagh**

**Clanrye Group, Downpatrick**

**FOR MORE INFORMATION, OR TO JOIN, CONTACT US ON:**

[nicola.o'loan@clanryegroup.com](mailto:nicola.o'loan@clanryegroup.com)
028 3089 8119

*Creative well being*

## Mums meet up

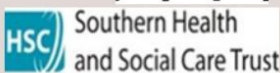





*Free!*  
**1.30pm monday**  
**@moneydarragh hub**  
**and bring your little one**  
**(under 4)**

For more info Call Jennie on  
**07521 698673** or Shauna at old  
Forge surgery **028 4376 8218**

In partnership with MDT Social Work  
Team



**07521 698673 / 028 4376 8218**



## Why not 'pop-in' to our drop-in?

### Newry information and support day

**Wednesday 11 October 2023, 10:30am to 2:30pm**

Newry Leisure Centre,  
60 Cecil Street, Newry,  
Co. Down,  
BT35 6AU

Learn more about a range of support services, grants and information available to you, your disabled child or young person and wider family.

Come along and meet Family Fund and other local and national charities and get support with making a Family Fund application.



Visit the events page on our  
website: [www.familyfund.org.uk](http://www.familyfund.org.uk)



Drop in anytime between 10:30am and 2:30pm.  
You can let us know you're coming or simply turn up.  
For any questions: [events@familyfund.org.uk](mailto:events@familyfund.org.uk)



[www.familyfund.org.uk/events/newry](http://www.familyfund.org.uk/events/newry)

BOLSTER COMMUNITY PRESENTS A

## 'SILENT DISCO' SPOOKTACULAR

AN INCLUSIVE CLUBBING EVENT



**COME IN FANCY DRESS & WIN BEST COSTUME PRIZES**

- 🎃 Live DJ in the garden bar
- 🎃 Spooktacular mocktails & cocktails

**£10pp via Eventbrite**  
Just search 'Bolster Community Silent Disco'

The Bank 'Vault Nightclub'  
Wed 25th Oct, 7.30pm til' late

**GET YOUR TICKETS NOW**

This is an inclusive social event for people with learning disabilities and neurodiverse conditions. This night is for all of YOU, your carers, friends, family and support workers! We can't wait to see you all. This event is for 18 years + and we encourage everyone to please drink responsibly.

**BOLSTER COMMUNITY** **RSP** Policing & Community Safety Partnership  
making M&M & East Antrim safer

**THE BANK** **NEWRY** BUSINESS IMPROVEMENT DISTRICT

 [www.eventbrite.com/silent-disco](https://www.eventbrite.com/silent-disco)

**FAMILY DAY TRIP**




Family fun for all at Exploris Aquarium and Seal Sanctuary, Portaferry. Enjoy the underwater adventure viewing a range of sea creatures in the ocean tanks and view the seals from behind the scenes. All with the support of the Bolster Community Family Support Workers.

**OPEN TO CHILDREN WITH DISABILITIES AND THEIR FAMILIES**

Pick Up & Drop Off: Newry  
Time: 10am - 3pm  
Date: 1st November 2023  
FREE Transport and Entry (Limited spaces available)  
£10 refundable deposit on arrival for the trip  
Bring your own pack lunch

To register, contact  
**028 3083 5764**  
[bolstercommunity.org](https://bolstercommunity.org)

**BOLSTER COMMUNITY** **HSC** Southern Health and Social Care Trust

 **028 3083 5764**



**FAMILY**  
**TOTS & TEA**

Are you the parent or carer of a pre-school age child with additional needs?  
Would you and your child like to meet new friends who are on the same journey?

Tots and Tea is a group of friendly mums and children who are all on the first steps of their journey through disability.

Our experienced staff are on hand to offer support and advice whilst you and your child enjoy meeting future friends.

**Monthly on a Wednesday morning 10.00am-12noon**

**Monthly on a Tuesday evening 7pm - 9pm (Parents only)**

**Drumalane And Quayside Close Community Centre  
Drumalane Park, Fathom line,  
Newry BT35 8AT**

For further information call Catriona or Julie-Anne on 028 3083 5764

**BOLSTER COMMUNITY** **HSC** Southern Health and Social Care Trust



028 3083 5764

LOCAL  
CHURCHES  
WORKING IN  
PARTNERSHIP

IN THE  
HEART OF  
NEWRY



Find us on  
Facebook

Newry Food Initiative - YMCI

Located in the ground floor  
premises underneath the  
Magnet Centre, Hill Street

## NEWRY FOOD INITIATIVE

**Updated Opening Hours**

**Monday 10am to 1pm**

**Friday 10am to 1pm**

All donations gratefully received

Please contact the e-mail below to request a  
**referral voucher** for any individual/family in need

✉ [newryfoodinitiative@gmail.com](mailto:newryfoodinitiative@gmail.com)



The **Newry Food Initiative** offers food and support in the local Newry area, in response to the current cost of living crisis

Several local churches manage the foodbank, supported by volunteers. Referrals are accepted through organisations currently working with local individuals & families, but anyone in genuine need of help can get support

The Newry Food Initiative operates from:

**YMCI Building, Ground Floor, 81 Hill Street, Newry, BT34 1DG**

Donations of any non-perishable food are welcome, especially the following:

- Tinned Food (Vegetables, Meats, Fish, Fruit, Spaghetti, Soups, etc.)
- Long Life/ UHT Milk
- Tea/Coffee
- Cereal
- Sauces (Ketchup, Brown Sauce, Cooking Sauces, e.g. Ragu, Curry)
- Pasta, Rice, Noodles
- Packets of Mash or Tinned Potatoes
- Rice Pudding/Custard
- Biscuits & Sweet Treats

We also take donations of toiletries, household/cleaning items and baby products

Food past its sell by date and homemade goods cannot be donated

You can make a donation to the foodbank during our opening hours or at many of the local churches in Newry

## NEED HELP?

The food and support which we have available is here for anyone who is genuinely struggling with food or household bills

If you would like to receive a food parcel, please contact us or speak to any of the local organisations who are currently operating in the Newry area in support of individuals & families who may be in need

For further information:

Find us on  
Facebook

Newry Food Initiative - YMCI



[newryfoodinitiative@gmail.com](mailto:newryfoodinitiative@gmail.com)



[newryfoodinitiative@gmail.com](mailto:newryfoodinitiative@gmail.com)

ST OLIVER PLUNKETT YOUTH CLUB

**SOPYC**

*Starting September 2023*

**YOUTH CLUB PROGRAMME**

| TUESDAY           | WEDNESDAY  | THURSDAY                         | FRIDAY            |
|-------------------|--|----------------------------------|-------------------|
| 6-9PM<br>YEAR 10+ | 6-7.30PM<br>PRIMARY 6+7<br>7.30-9.00PM<br>YEAR 8+9 | 6-9PM<br>PRIMARY 6+7<br>YEAR 8+9 | 6-9PM<br>YEAR 10+ |

**HEALTH & WELLBEING LEARNING & ACHIEVING  
OUTDOOR EDUCATION GOOD RELATIONS LIFE SKILLS  
DIVERSITY ENVIRONMENT ACCREDITATION**

FOR FURTHER INFORMATION CONTACT LIZZY:  
TEL: (028) 30868107  
EMAIL: LIZZY.SOPYC@GMAIL.COM



[lizzy.sopyc@gmail.com](mailto:lizzy.sopyc@gmail.com)

ST OLIVER PLUNKETT YOUTH CLUB

**SOPYC**

**YOUTH FOR ALL**

**YOUTH PROVISION FOR CHILDREN AND  
YOUNG PEOPLE WITH DISABILITIES,  
LEARNING DIFFICULTIES AND ADDITIONAL NEEDS**

**MONDAYS 5.30-7.00PM**



**AGE GROUPS:**

**AGE 6-8**  
(ACCOMPANIED  
BY A PARENT / CARER)

**AGE 9-17**

**AGE 18+**  
(REGISTER AS  
A VOLUNTEER)

FOR FURTHER INFORMATION: SARAH\_CAIRNS17@HOTMAIL.COM  
+447578740593 OR STOLIVERPUNKETT@HOTMAIL.CO.UK



[sarah\\_cairns17@hotmail.com](mailto:sarah_cairns17@hotmail.com)

**SOPYC**

PRESENTS:

# JUNIOR CLUB!

PRIMARY 4 & PRIMARY 5

THURSDAYS

TIME: 4PM-5:30PM

**ADMISSION:**  
£1 / €1.50

TUCK SHOP AVAILABLE

ARTS AND CRAFTS,  
BAKING, GAMES,  
ACTIVITIES, DANCE, AND  
MUCH MORE.

FOR FURTHER INFORMATION CONTACT CAILIN:  
TEL: 02830868107 EMAIL: [CAILIN.SOPYC@OUTLOOK.COM](mailto:CAILIN.SOPYC@OUTLOOK.COM)

Made with PosterMyWall.com



[caitlin.sopyc@outlook.com](mailto:caitlin.sopyc@outlook.com)

**Family Fund**  
Helping disabled children

## Why not 'pop-in' to our drop-in?

### Dungannon information and support day

**Tuesday 10 October 2023, 10:30am to 2:30pm**

The Junction,  
12 Beechvalley Way,  
Dungannon  
BT70 1BS

Learn more about a range of support services, grants and information available to you, your disabled child or young person and wider family.

Come along and meet Family Fund and other local and national charities and get support with making a Family Fund application.



Drop in anytime between 10:30am and 2:30pm.  
You can let us know you're coming or simply turn up.  
For any questions: [events@familyfund.org.uk](mailto:events@familyfund.org.uk)

Visit the events page on our website: [www.familyfund.org.uk](http://www.familyfund.org.uk)



**first steps**  
Women's Centre  
Support. Educate. Empower.

## TAKE YOUR FIRST STEPS INTO EMPLOYMENT

Thinking about getting into employment?  
Want to turn your passions or skills into a career?  
We can support you on your journey!

**WE OFFER:**

- Free childcare while you attend
- Free transport to/from classes
- Free counselling
- Free benefits advice
- 1-1 Mentoring

**YOU CAN JOIN CLASSES IN:**

- First aid
- Food hygiene
- Digital Literacy
- Managing money
- Wellbeing
- And much more...

**AND BENEFIT FROM THIS...**

- Weekly job club
- Confidence building
- Interview prep
- Work experience/placement



**JOIN THE REAP PROGRAMME NOW**

For more information, contact Olivia  
fswc.olivia@gmail.com



Funded by UK Government

Rural Economic Accelerator Programme

POWERED BY **LEVELLING UP**



[fswc.olivia@gmail.com](mailto:fswc.olivia@gmail.com)

**first steps**  
Women's Centre  
Support. Educate. Empower.

## Job Club

Wednesdays  
1pm - 2pm  
Drop in Support 2pm-3pm

|   |  |
|---|--|
| <p><b>WEDNESDAY 4TH OCT</b></p> <p>1pm- Recognising your skills and qualities:<br/>2pm Turning life skills into job skills</p> <p><b>WEDNESDAY 11TH OCT</b></p> <p>1pm- Cvs and Cover Letters: Tips, tools and resources<br/>2pm</p> <p><b>WEDNESDAY 18TH OCT</b></p> <p>1pm- Job Searching: Tips and tools<br/>2pm</p> <p><b>WEDNESDAY 25TH OCT</b></p> <p>1pm- Interview skills: Tips and practices<br/>2pm</p> <p><b>WEDNESDAY 8TH NOV</b></p> <p>1pm- Confidence building &amp; self-advocacy<br/>2pm</p> | <p><b>WEDNESDAY 15TH NOV</b></p> <p>1pm- Interpersonal skills and language<br/>2pm for difficult situations/people</p> <p><b>WEDNESDAY 22ND NOV</b></p> <p>1pm- Entrepreneurship: Tips for turning your hobby into your income<br/>2pm</p> <p><b>WEDNESDAY 29TH NOV</b></p> <p>1pm- Balancing life &amp; work: Tips and tools<br/>2pm</p> <p><b>WEDNESDAY 6TH DEC</b></p> <p>1pm- Stress management &amp; resilience<br/>2pm building</p> <p><b>WEDNESDAY 13TH DEC</b></p> <p>1pm- Christmas special<br/>2pm</p> |
|---|--|



ALL FREE TO ATTEND AND OPEN TO ANYONE ELIGIBLE FOR REAP

FOR MORE INFORMATION OR TO ATTEND PLEASE EMAIL  
fswc.olivia@gmail.com

21a William Street, Dungannon | PH: 02887727648 | @firststepswomens













Funded by UK Government

Rural Economic Accelerator Programme

POWERED BY **LEVELLING UP**



[fswc.olivia@gmail.com](mailto:fswc.olivia@gmail.com)

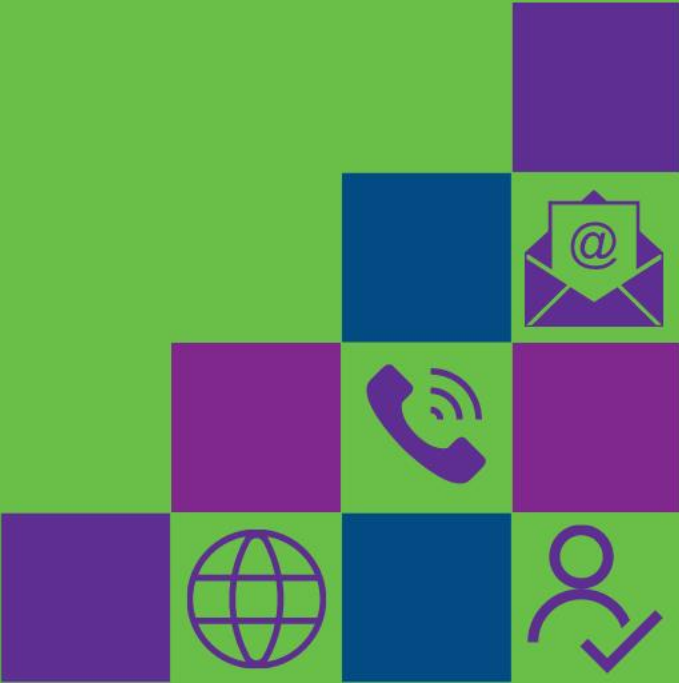
| SUBMISSION   |  | GUIDELINES  |
|--|--|---|
| <ul style="list-style-type: none"> <li>✓ Submit the information in the format you would like it to be included. We can't transform a word-heavy document into a flyer.</li> <li>✓ Less words, bigger pictures!</li> <li>✓ We do not advertise or endorse those events or programmes which are privately funded as a business.</li> <li>✓ Information will usually be included for x1 edition, unless otherwise requested.</li> </ul> | <br><br><br><br><br><br><br><br><br><br><br> | <ul style="list-style-type: none"> <li>✓ 'FYI' will usually be issued every fortnight, on a Thursday afternoon. Please send your articles for inclusion by 5pm of the Tuesday prior to this.</li> <li>✓ We may have to decline to advertise information which is not applicable to better outcomes for children and young people.</li> <li>✓ Your feedback is welcome. (We are not perfect, but strive to be as good as we can.)</li> <li>✓ Please let us know if 'FYI' has helped your service, event or activity in any way.</li> </ul> |



Click on the below issue nos. to view recent editions of 'FYI':

[Issue 111](#)  
21<sup>st</sup> September 2023

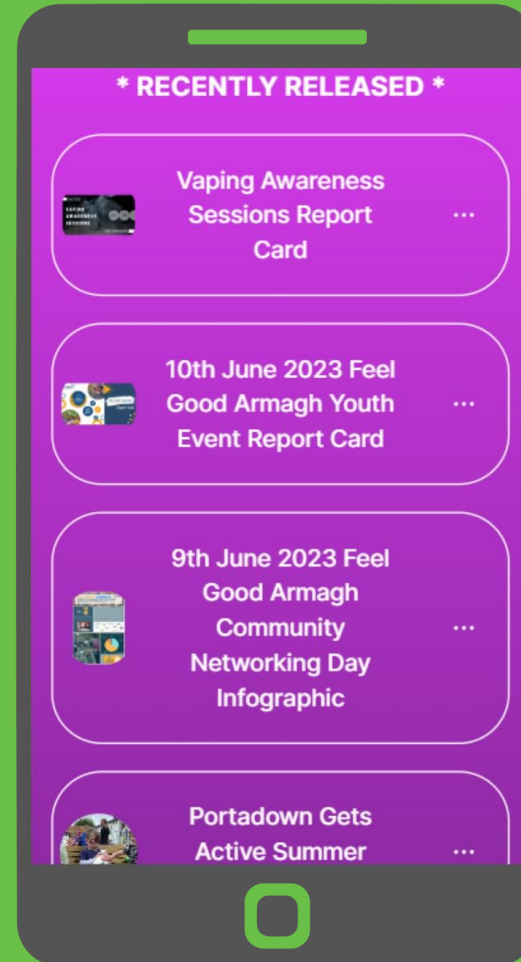
[Issue 110](#)  
7<sup>th</sup> September 2023



## UPCOMING 2023 LPG MEETINGS

|                |                             |
|----------------|-----------------------------|
| Newry & Mourne | Wed. 11 <sup>th</sup> Oct.  |
| Armagh         | Thur. 26 <sup>th</sup> Oct. |
| Craigavon      | Tues. 7 <sup>th</sup> Nov.  |
| Banbridge      | Wed. 15 <sup>th</sup> Nov.  |
| Dungannon      | Tues. 21 <sup>st</sup> Nov. |
| South Armagh   | Tues. 28 <sup>th</sup> Nov. |

Meetings are usually scheduled to begin at 10am  
Formats will alternate between face-to-face & Zoom  
(Refer to the 2023 Meetings Calendar on our [Linktree](#))



SCAN QR CODE  
FOR INSTANT  
ACCESS TO OUR  
INFO. HUB



For further information on Locality Planning or 'FYI', contact:  
Joanne Patterson ([localityplanning@ci-ni.org.uk](mailto:localityplanning@ci-ni.org.uk)) or Darren Curtis (07725232566)  
CYPSP, 2<sup>nd</sup> Floor, Health & Social Care Board, Tower Hill, Armagh. BT61 9DR





For Your Information

## NEXT ISSUE

**19th October  
2023**

**Submission  
Deadline:**

**17th October  
2023**



[localityplanning@ci-ni.org.uk](mailto:localityplanning@ci-ni.org.uk)

