



BELFAST OUTCOMES GROUP WORKSHOP FEBRUARY 2012



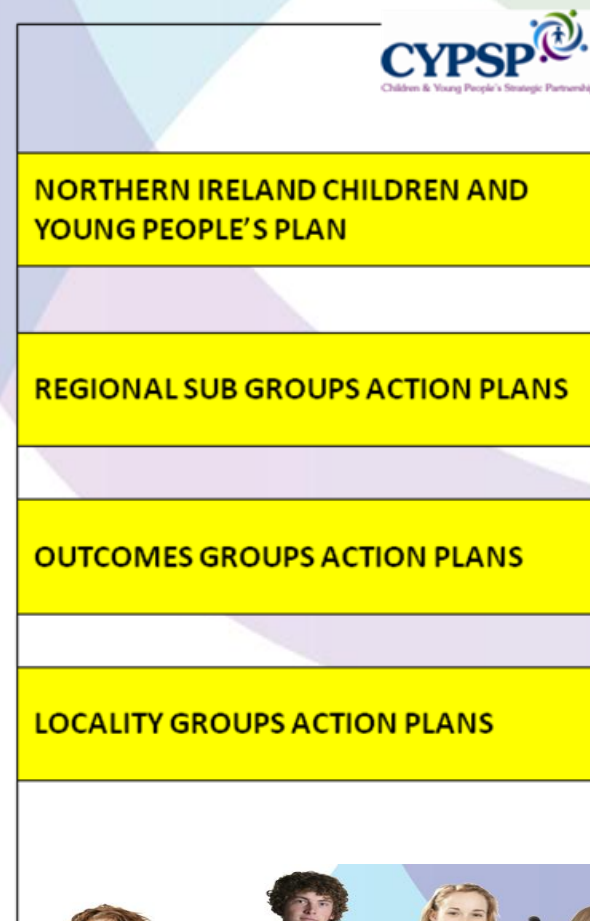
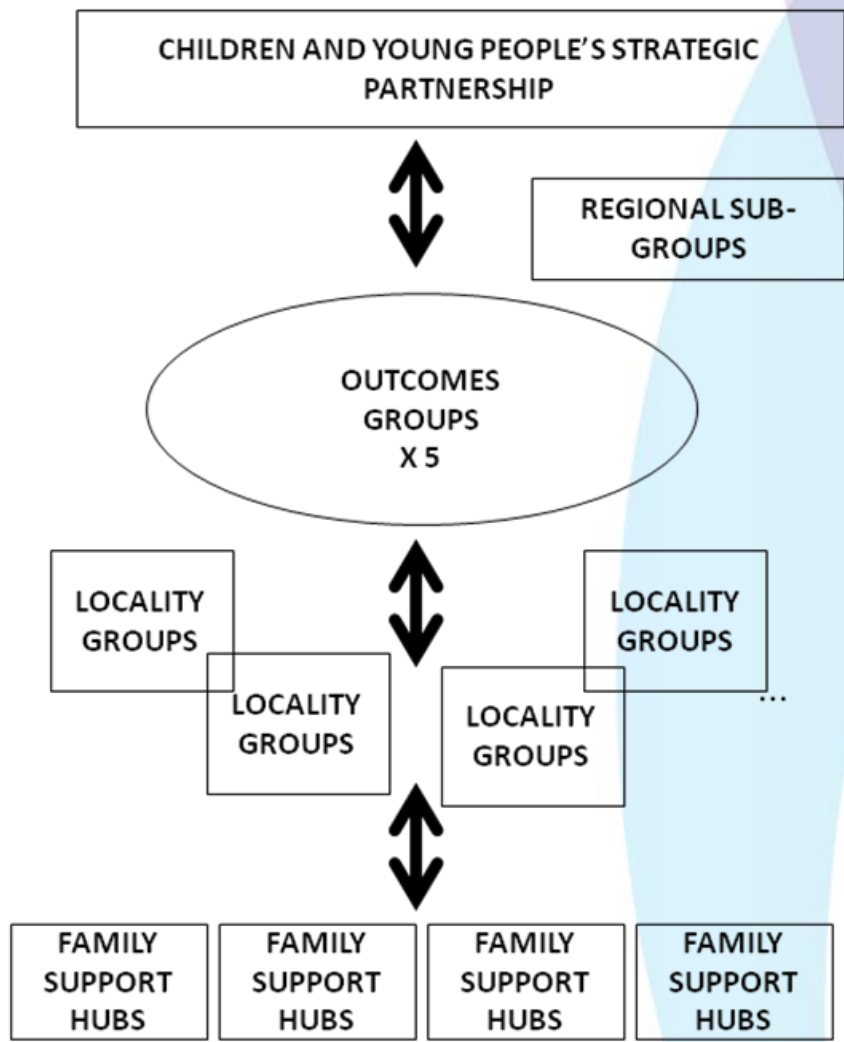


Role clarification

Key responsibilities



BACKGROUND



Shared vision – Outcomes for children

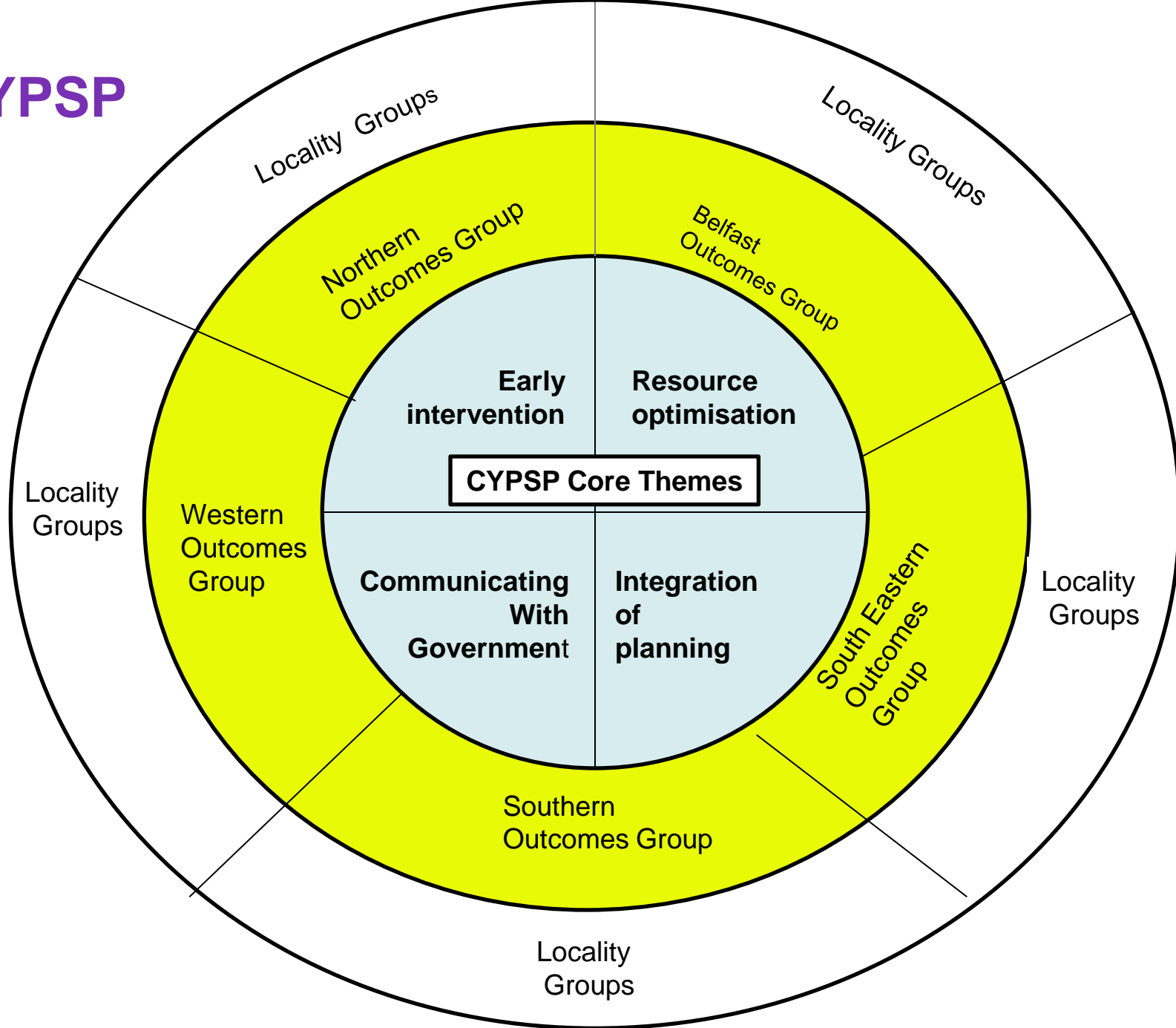


a strategy for children and young people, which includes six high level outcomes, which make sense to representatives across a wide range of agencies.





CYPSP



Focus on Early Intervention

- Focus on early intervention
- Early intervention = at an early age and at an early stage of difficulties
- Early intervention requires a coordinated approach, if it to work for families, communities and make best use of scarce resources.
- Seeking early intervention region status for Northern Ireland





Northern Ireland Family Support Model

Children in Need

**Children on
Child Protection Register**

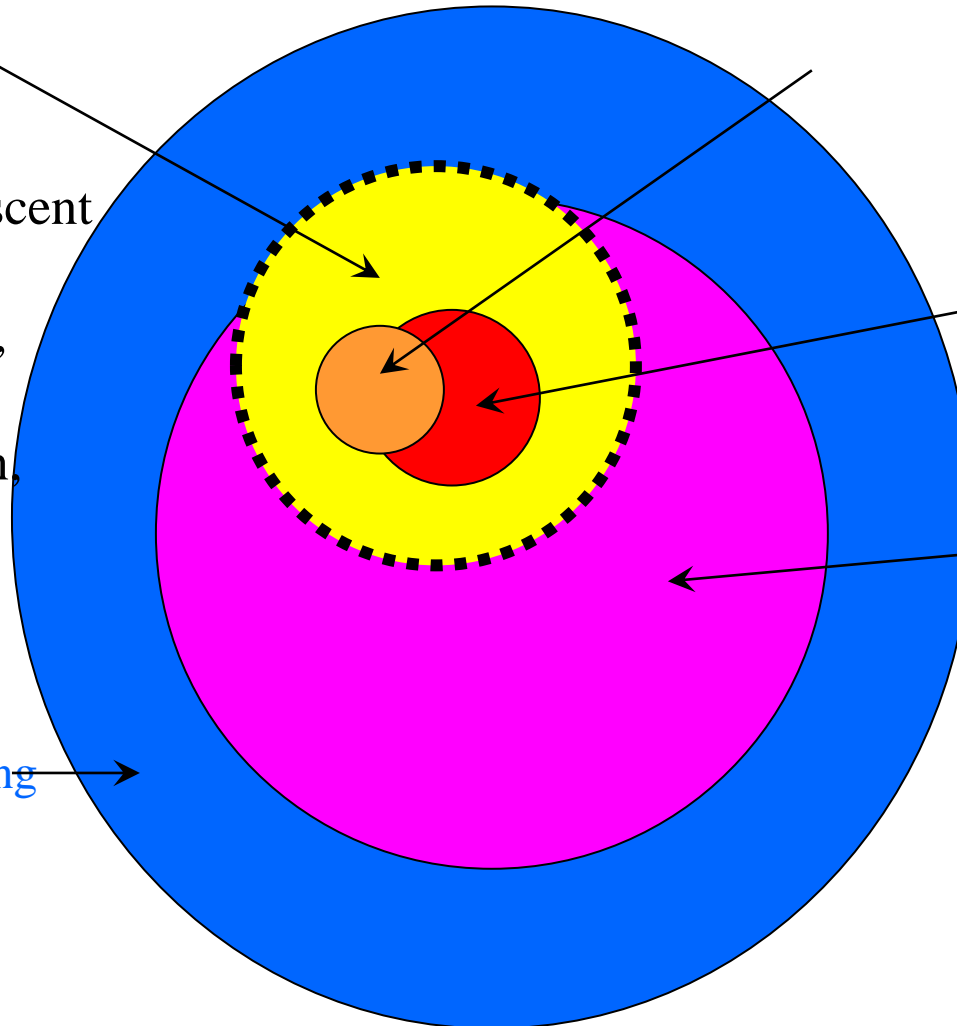
**Children
Looked After**

**Children who
are Vulnerable**

Including:

- Disability,
- Child and Adolescent Mental Health,
- Youth Offending,
- Homelessness,
- School Exclusion,
- Care Leavers

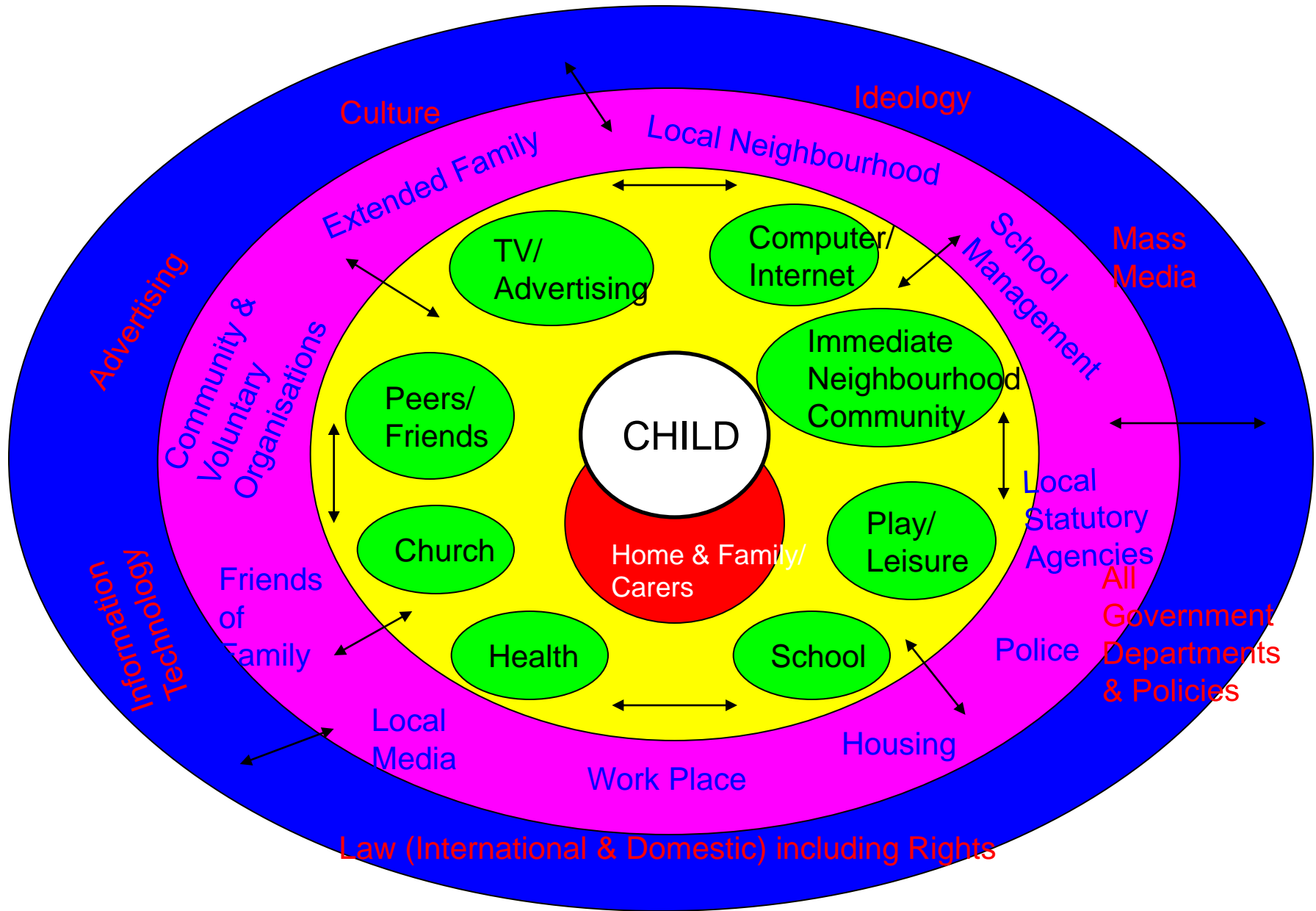
**Total
Population**
of Children and Young
People



For example:

- Behaviour Support,
- Parenting Support Programmes,
- Social Excluded Communities (e.g. Travellers)

Whole Child Model



ROLE/PURPOSE OF OUTCOMES GROUPS

PROVIDE LOCAL FOCUS FOR TRACKING THE 6 HIGH LEVEL
OUTCOMES – OUTCOMES BASED PLANNING

CONTRIBUTING TOWARDS THE IMPLEMENTATION OF THE
CYPSP

MOBILISING AND SHARING LOCAL RESOURCES FROM
STATUTORY, VOLUNTARY AND COMMUNITY SECTORS
TO IMPROVE THOSE OUTCOMES

INTEGRATED PLANNING AND COMMISSIONING

ENSURING APPROPRIATE LINKAGES WITH OTHER
PLANNING PROCESSES



SPECIFIC RESPONSIBILITIES

MULTI AGENCY COLLABORATIVE

INTEGRATED PLANNING AND COMMISSIONING

COLLECTIVE USE OF EXISTING RESOURCES

OWN AGENCY/COMMUNITY

OUTCOMES BASED PLANNING

LOCALITY PLANNING

ACTION PLAN CYPP

FAMILY SUPPORT HUBS

DELIVERY OF IMPROVED OUTCOMES
FOCUS ON EARLY INTERVENTION

PARTICIPATION OF CHILDREN AND YOUNG PEOPLE AND PARENTS



MEMBERSHIP

STATUTORY SECTOR

- The Health and Social Care Board and LCG
- The Public Health Agency
- The Education and Library Board
- Representatives of the District Councils within the area.
- The Police Service of Northern Ireland
- The Youth Justice Agency
- The Probation Board of Northern Ireland.
- The Health and Social Care Trust.
- The Housing Executive of Northern Ireland
- Department of Social Development.



VOLUNTARY SECTOR - 4 PLACES

COMMUNITY SECTOR - 4 PLACES

BME SECTOR - 2 PLACES



Outcomes Based Planning

Jointly agreed strategic direction from the Strategic Partnership

Mandate from the Strategic Partnership

Detailed outcomes based planning carried out by planning groups, geographically based and disadvantaged groups



Outcomes based planning – logic model

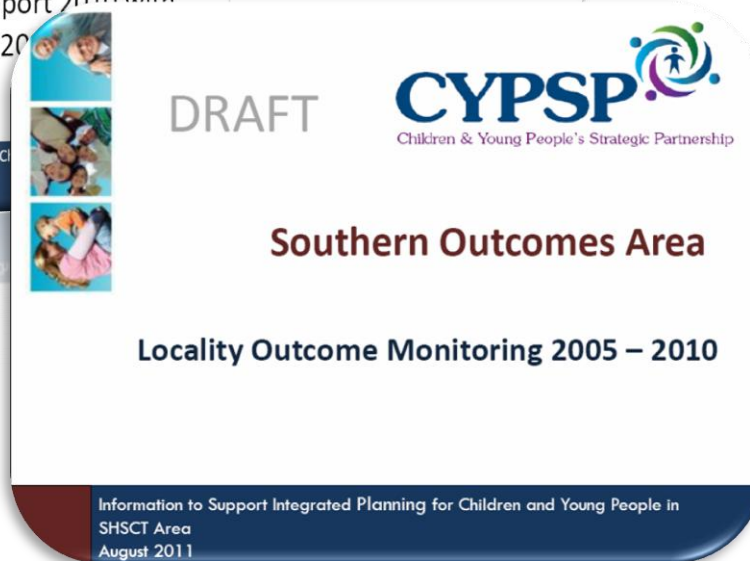
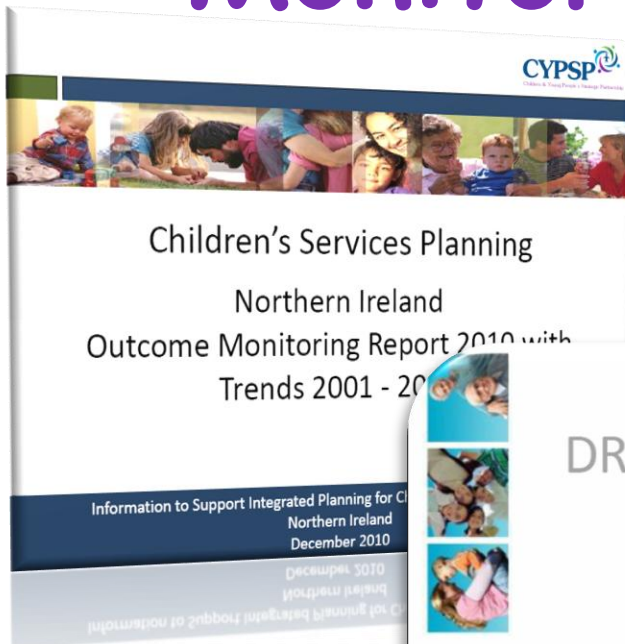
Outcomes – the 6 high level outcomes - a set of statistical indicators related to these outcomes for children and young people

Qualitative information from children, families, communities and staff across agencies, and information from research

Changes to supports and services



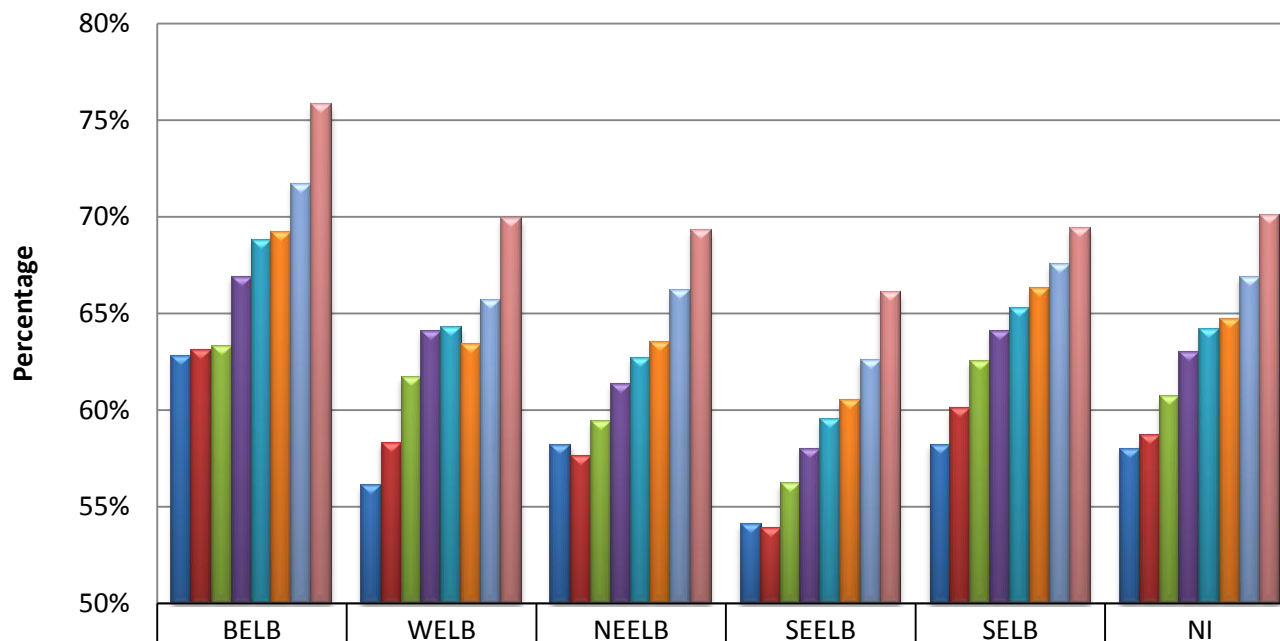
Integrated Outcome Monitoring Information



www.outcomesforchildren.org/Publications

Enjoying, Learning and Achieving

Percentage of young people gaining 5 GCSEs
(A-C) or above



The Story Behind the Trends - The percentage of young people gaining 5 GCSEs (A-C) has risen from 58% in 2000/01 to 70% in 2008/09. All Education Board areas have followed this trend.

Note: The 2002/03 School Leavers Survey was abandoned due to problems with the schools' administrative system.

	BELB	WELB	NEELB	SEELB	SELB	NI
2000/01	62.80%	56.10%	58.20%	54.10%	58.20%	58.00%
2001/02	63.10%	58.30%	57.60%	53.90%	60.10%	58.70%
2003/04	63.30%	61.70%	59.40%	56.20%	62.50%	60.70%
2004/05	66.90%	64%	61.30%	58.00%	64.10%	63.00%
2005/06	68.80%	64%	62.70%	59.50%	65.30%	64.20%
2006/07	69.20%	63.40%	63.50%	60.50%	66.30%	64.70%
2007/08	71.70%	65.70%	66.20%	62.60%	67.50%	66.90%
2008/09	75.80%	69.90%	69.30%	66.10%	69.40%	70.10%

Local Government District Outcome Monitoring Report - Sample

Percentage of Young People gaining 5 GCSEs (A-C) or Above

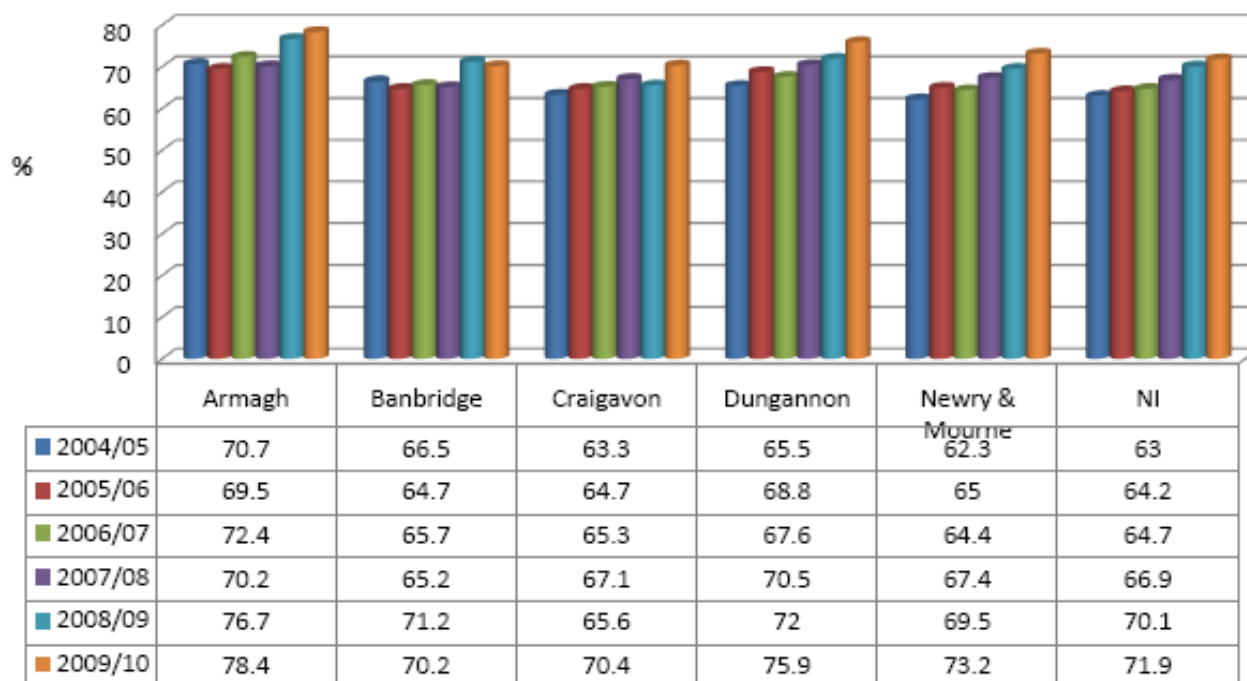
Data Source: Department of Education



ENJOYING, LEARNING AND ACHIEVING

Why is it Important? GCSE stands for General Certificate of Secondary Education. GCSEs are the main qualification taken by 14-16 year olds. You can take GCSEs in a wide variety of academic and 'applied' (work related) subjects. GCSEs are highly valued by schools, colleges and employers. Obtaining GCSEs lead to a number of routes, mainly work, further study or an Apprenticeship. Most Universities will ask for 5 GCSEs grades A-C, including English and Maths (as well as A Levels or equivalent qualifications) (www.deni.gov.uk, 2009).

Percentage of Young People gaining 5 GCSE's (A-C) or above



The Story Behind the Trends –

Overall all areas have been consistently higher than the Northern Ireland average over the past few years with Banbridge falling just below in 07/08 and Craigavon and Banbridge slightly below in 09/10.

Locality Outcome Monitoring Report - Sample																								
ENJOYING, LEARNING AND ACHIEVING										Areas shaded red are performing poorer than NI average and are areas for concern if consistently shaded														
Indicators of Educational Attainment June 05 to June 10										Source: NINIS										* Figures <5 suppressed				
Ward	Multiple Deprivation 2010			% of Leavers attaining 2 or more A levels or Equivalent					% of Leavers attaining 5+ GCSEs at grades A* to C						Number of Leavers attaining no GCSEs						% Pupils Statemented/SEN Stage 1-4 (Year 1 - 7)			
	Rank of NI (n=582)	20% Most deprived in NI	2005	2006	2007	2008	2009	2010	2005	2006	2007	2008	2009	2010	2005	2006	2007	2008	2009	2010	2007	2008	2009	2010
Craigavon																								
Aghagallon	401	X	54	51	49	55	58	56	74	67	73	75	77	77	<7	<7	<7	<7	<7	<7	7.4	11.4	5.4	6.7
Annagh	255	X	38	32	40	30	13	31	76	61	73	44	46	54	<7	<7	<7	<7	<7	<7	8.8	15.7	11.1	13.5
Ballybay	85	✓	16	36	13	10	9	9	42	55	29	30	37	71	<7	<7	<7	<7	<7	<7	35.4	24.8	28.1	36.9
Ballyoran	183	X	22	33	32	36	34	45	37	70	58	70	54	70	9	<7	<7	<7	<7	<7	22.3	14.6	21.1	25.8
Bleary	489	X	45	43	56	52	44	55	77	74	76	79	77	82	<7	<7	<7	<7	<7	<7	9.6	12.1	8.9	8.5
Brownstown	387	X	34	33	25	19	31	22	63	63	54	75	69	67	<7	<7	<7	<7	<7	<7	11.2	15.5	13.3	17.2
Church	100	✓	14	12	14	15	14	15	48	52	52	45	52	45	<7	<7	<7	<7	<7	<7	38.4	26.6	35.4	40.6
Corcrain	71	✓	16	21	26	17	7	22	43	47	51	45	24	44	11	<7	<7	<7	<7	<7	38	20.2	31.5	33.9
Court	52	✓	28	51	33	28	33	49	41	62	59	49	56	68	<7	<7	<7	<7	<7	<7	29.5	27.6	21.3	27.3
Derrytrasna	431	X	49	56	57	66	58	51	70	67	76	81	80	75	<7	<7	<7	<7	<7	<7	6.8	18.8	5.2	6.9
Donaghcloney	498	X	41	42	45	47	47	40	69	61	68	78	72	71	<7	<7	<7	<7	<7	<7	*	12.5	*	6.9
Drumgask	35	✓	23	18	24	33	21	33	48	45	48	56	37	47	<7	7	<7	<7	<7	<7	49.9	29.8	34.4	39
Drumgor	63	✓	41	10	24	19	7	31	66	10	41	58	37	41	<7	<7	<7	<7	<7	<7	30.5	23.6	33.8	37.2
Drumnamoe	46	✓	42	46	34	31	45	42	61	62	57	58	57	54	<7	<7	<7	<7	<7	<7	35.8	22.2	32.8	40.5
Edenderry (Craigavon)	408	X	43	51	44	43	57	45	78	82	74	71	71	85	<7	<7	<7	<7	<7	<7	5.8	14.4	7.1	8.5
Kernan	432	X	33	35	36	38	56	38	67	71	69	75	76	65	<7	<7	<7	<7	<7	<7	13.2	14.5	14.2	11.2
Killycomain	286	X	40	40	38	13	24	58	67	57	59	63	61	84	<7	<7	<7	<7	<7	<7	23.4	18.1	9.4	14.2
Knocknashane	504	X	44	58	54	57	45	49	89	82	72	80	79	85	<7	<7	<7	<7	<7	<7	7.8	19.9	6	12.3
Magheralin	530	X	56	39	46	48	55	59	77	70	78	73	84	81	<7	<7	<7	<7	<7	<7	*	13.7	6	6.8
Mourneview	131	X	26	44	31	21	31	37	54	59	60	48	58	76	<7	<7	<7	<7	<7	<7	25.2	25.6	26.8	23.8
Parklake	247	X	56	38	30	47	53	40	80	59	58	63	79	74	<7	<7	<7	<7	<7	<7	12.3	18	14.5	14.5
Taghnevan	84	✓	32	37	48	36	44	49	53	69	73	64	60	72	<7	<7	<7	<7	<7	<7	24.7	16.6	28.7	28.1
Tavanagh	90	✓	10	17	13	17	13	16	10	50	38	50	52	16	<7	<7	<7	<7	<7	<7	33.1	27.4	32.2	27.6
The Birches	389	X	31	49	44	52	45	49	65	78	81	77	75	70	<7	<7	<7	<7	<7	<7	9.5	14.1	12.7	12.7
Waringstown	531	X	55	59	54	52	58	60	73	78	77	80	83	81	<7	<7	<7	<7	<7	<7	*	8.4	*	5.1
Woodville	228	X	61	76	52	63	60	71	75	83	78	85	75	91	<7	<7	<7	<7	<7	<7	17	13.3	14.1	13.7
NI Average			44	45	45	47	51	53	63	64	65	67	70	72							19.8	19.9	17.3	18.9

Framework for Outcomes Based Planning



www.outcomesforchildren.org

22 May 2010

New government guidelines for child services coming soon...

18 May 2010

SureStart Summer Scheme Initiative gaining momentum...

[More News & Events](#)

Family Support Services Directory

Welcome to the Northern Ireland Family Support Services Directory.

This directory provides details of a wide range of services offering support to families across Northern Ireland. It brings together comprehensive and up-to-date information about services for children, young people, their parents and carers.

SEARCH DATABASE

Choose a service



OR

Keyword Search

Select district council



SEARCH

A - Z SERVICE DIRECTORY

[A](#) [B](#) [C](#) [D](#) [E](#) [F](#) [G](#) [H](#) [I](#) [J](#) [K](#) [L](#) [M](#) [N](#) [O](#) [P](#) [Q](#) [R](#) [S](#) [T](#) [U](#) [V](#) [W](#) [X](#) [Y](#) [Z](#)

Telephone Helpdesk

Talk to us now for help & advice...



Challenging Behaviour Courses

Click here to register...



Training Courses...



SureStart Summer Schemes

Find out what's going on in your area...

SureStart



Site Safe

All organisations in this directory have declared to HSCB that they have clear policy and procedures for Safeguarding children.

Get included in the Directory!

Department of Health,
Social Services and Public Safety
www.dhespani.gov.uk

Health and Social Care
www.hscni.net

Principles and standards



SPECIFIC RESPONSIBILITIES

MULTI AGENCY COLLABORATIVE

INTEGRATED PLANNING AND COMMISSIONING

COLLECTIVE USE OF EXISTING RESOURCES

OWN AGENCY/COMMUNITY

OUTCOMES BASED PLANNING

LOCALITY PLANNING

ACTION PLAN CYPP

FAMILY SUPPORT HUBS

DELIVERY OF IMPROVED OUTCOMES
FOCUS ON EARLY INTERVENTION

PARTICIPATION OF CHILDREN AND YOUNG PEOPLE AND PARENTS





GROUP MEETING SINCE JUNE 2011



PARTNERSHIP/LINKAGES



MEMBERSHIP



**OUTCOMES BASED PLANNING ACTION
PLANS/CONSULTATION DOCUMENTS**



COMMISSIONING – ADDITIONAL IN-YEAR £100K



**MAPPING LOCAL PARTNERSHIPS TO INFORM
DECISIONS RE LOCALITY PLANNING
GROUPS/FAMILY SUPPORT HUB**



Role clarification

Member's expectations/contributions
Gaps and opportunities



SPECIFIC RESPONSIBILITIES

MULTI AGENCY COLLABORATIVE

INTEGRATED PLANNING AND COMMISSIONING

COLLECTIVE USE OF EXISTING RESOURCES

OWN AGENCY/COMMUNITY

OUTCOMES BASED PLANNING

LOCALITY PLANNING

ACTION PLAN CYPP

FAMILY SUPPORT HUBS

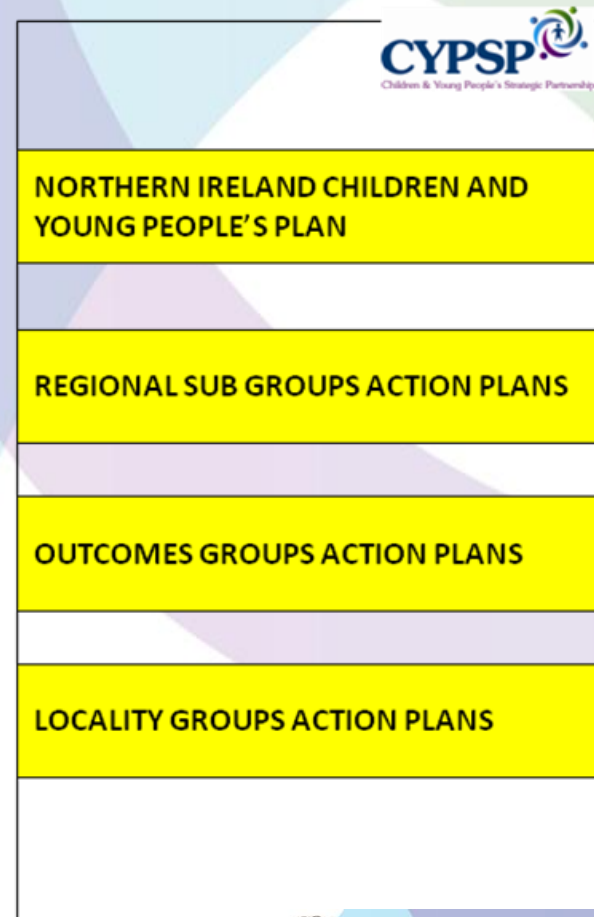
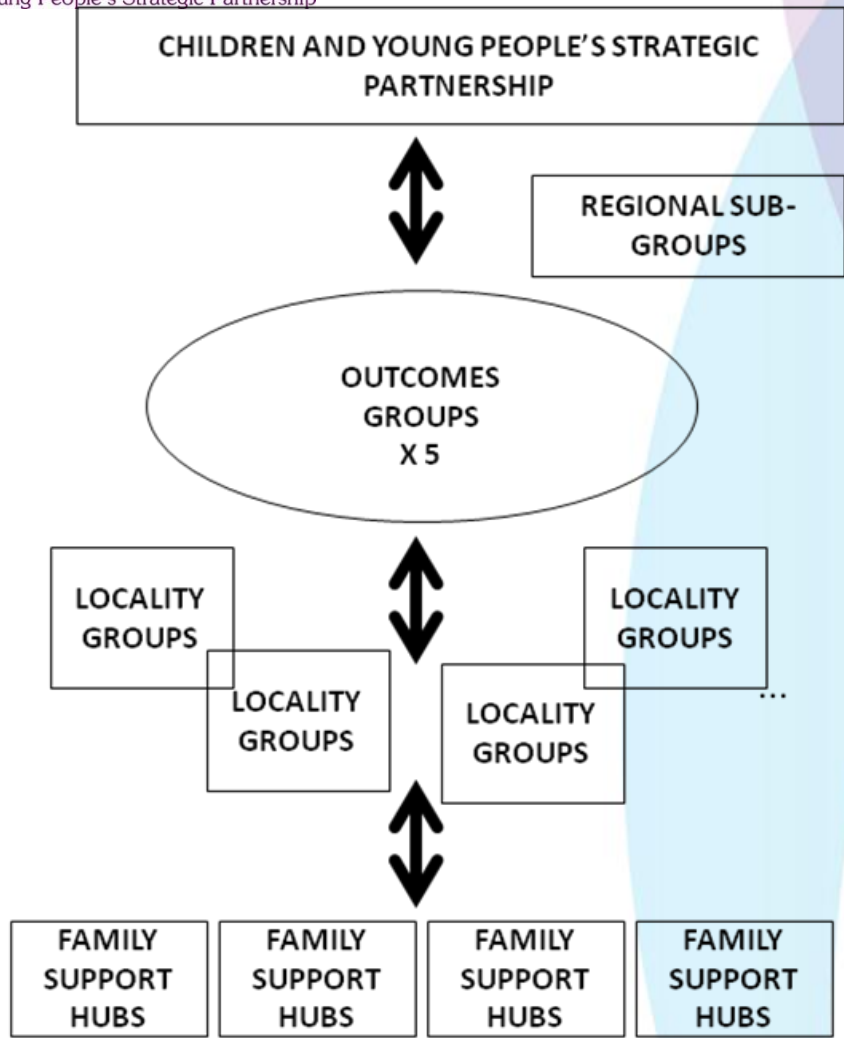
DELIVERY OF IMPROVED OUTCOMES
FOCUS ON EARLY INTERVENTION

PARTICIPATION OF CHILDREN AND YOUNG PEOPLE AND PARENTS

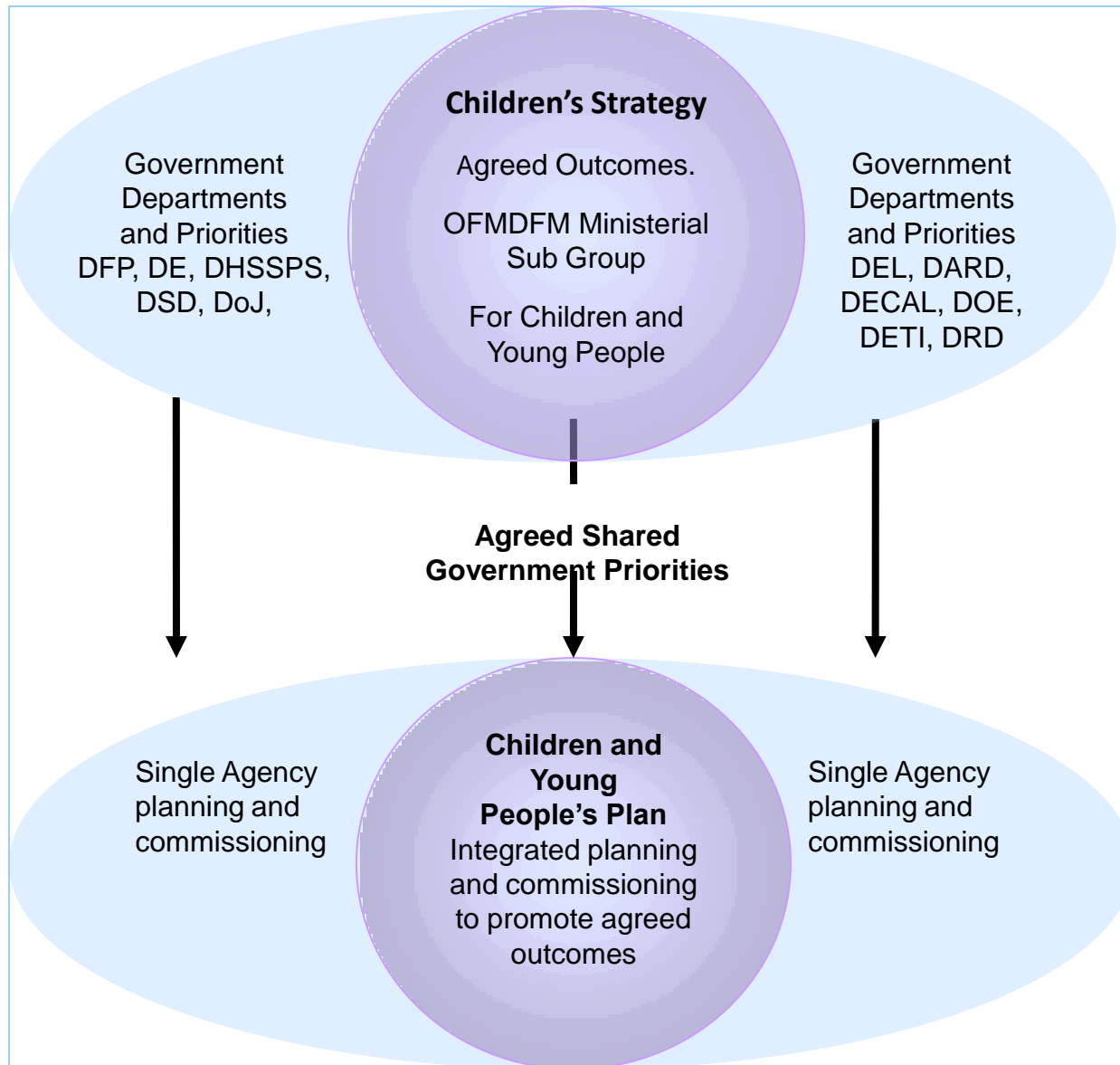


Mapping the wider system and key relationships

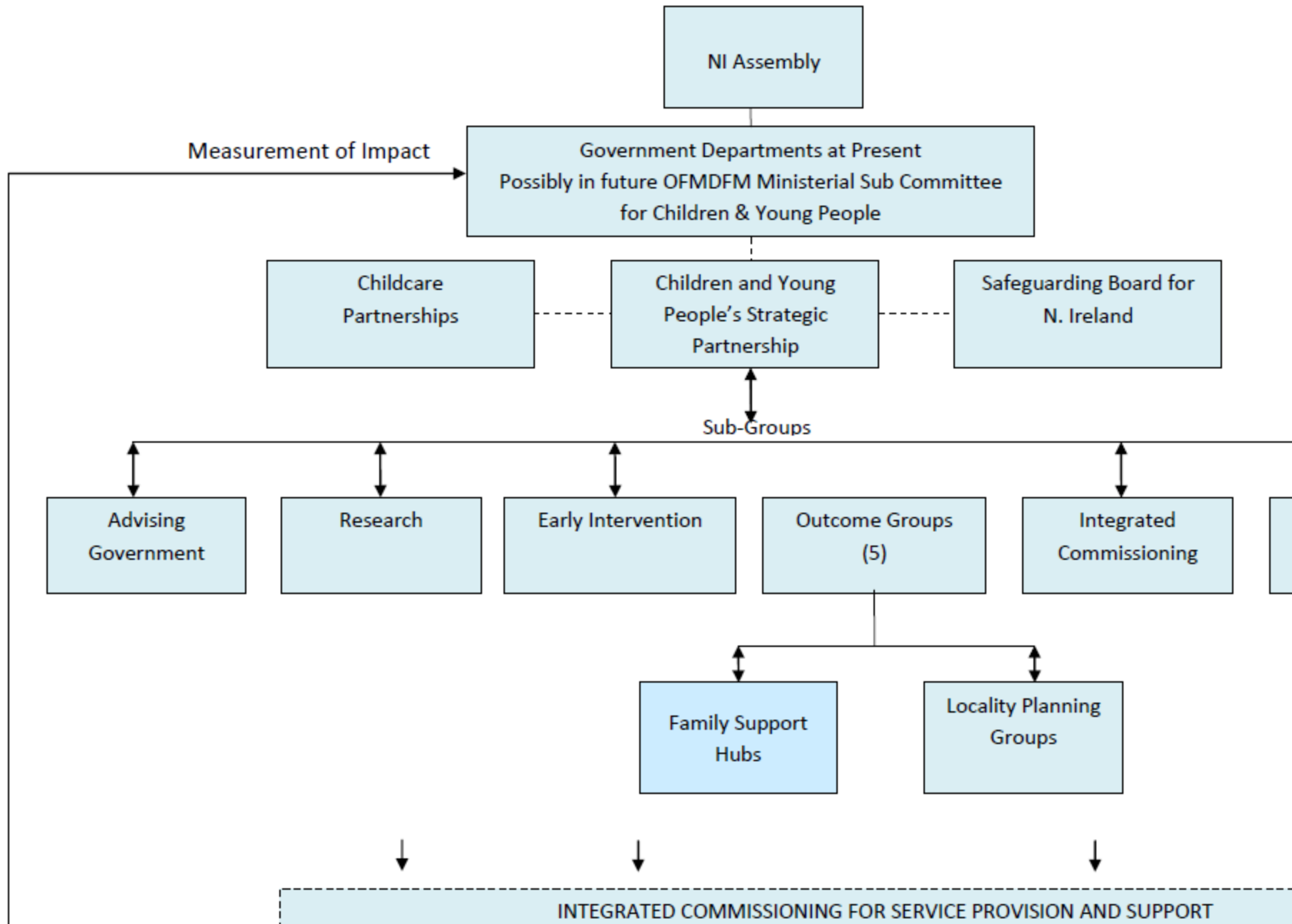




EXISTING AND DESIRED



Overview of Linkages and Sub Groups: Children and Young People's Strategic



Mapping of existing partnerships in Belfast And linkages

