



Western Outcomes Group

Turning the Curve

(Interactive Maps) Analysis

<http://www.cypsp.org/maps-demographic.htm>

Contents

Demography

Total Person 0-17 years 3

Total Families with Dependent Children 4

Healthy

Number of Births as of March 2013 5

Percentage of Mums who Smoke during Pregnancy (December 2013) 6

Percentage Mums who Breastfed at Hospital Discharge 2012/13 7

Children with a Disability in Receipt of DLA 0-15 years Rate per 1000 2012 8

Percentage of Dental Registrations against the GP Registrations of children Aged 0-5 years 2013 9

Number of Dental Extractions (0-17 years) 10

Number of Dental Fillings (0-17 years) 11

Health Card Registrations from Non- UK Nationals per 1000 Resident Population 2011 12

Enjoying, Learning and Achieving

Percentage of Primary School Children (P1-P7) with English as an Additional Language 2012/13 13

Percentage of Post-Primary Children with English as an Additional Language 2012/13 14

Percentage of Primary School Children (P1-P7) with less than 85% Attendance 2012/13 15

Percentage of Post-Primary School Pupils with less than 85% Attendance 2012/13 16

Percentage of Primary School Children (P1-P7) Statemented 2012/13 17

Percentage of Post-Primary School Pupils Statemented 2012/13 18

Percentage of Leavers Achieving at Least 5 GCSE's grades(A*- C) (or equiv) June 2012 19

Living in Safety and with Stability

Domestic Abuse Motivations Incidents and Crimes 2011/12 20

Anti-Social Behaviour Incidents 2012/13 21

Road Traffic Casualties and Deaths 2012 22

Economic and Environmental Wellbeing

Percentage of Children (0-15 years) in Income Support Households 2012 23

Lone Parents who are Income Support Claimants 2013 24

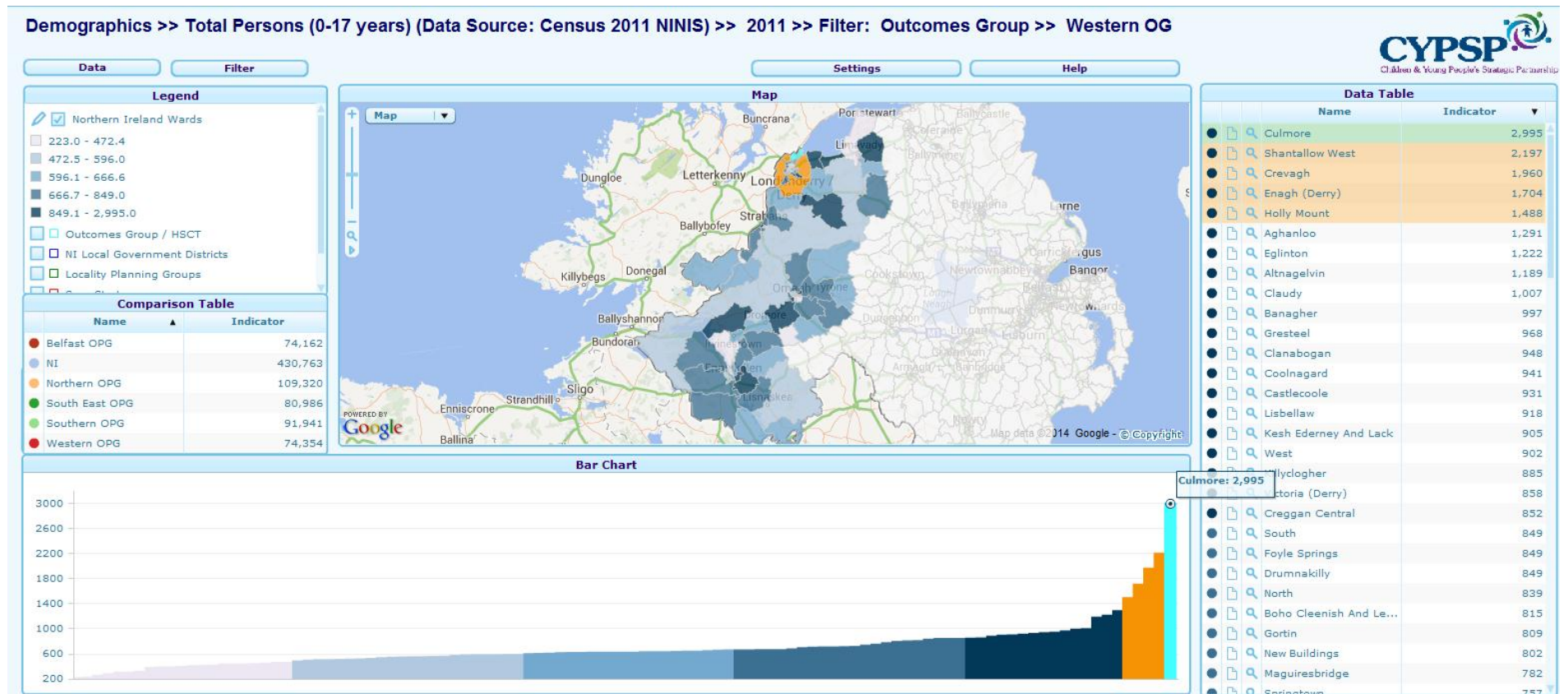
Percentage of Primary School Pupils with Free School Meal Entitlement 2012/13 25

Percentage of Post-Primary School Pupils with Free School Meal Entitlement 2012/13 26

Percentage of Children in Poverty (0-19 years) 2011 27

Contact Details 28

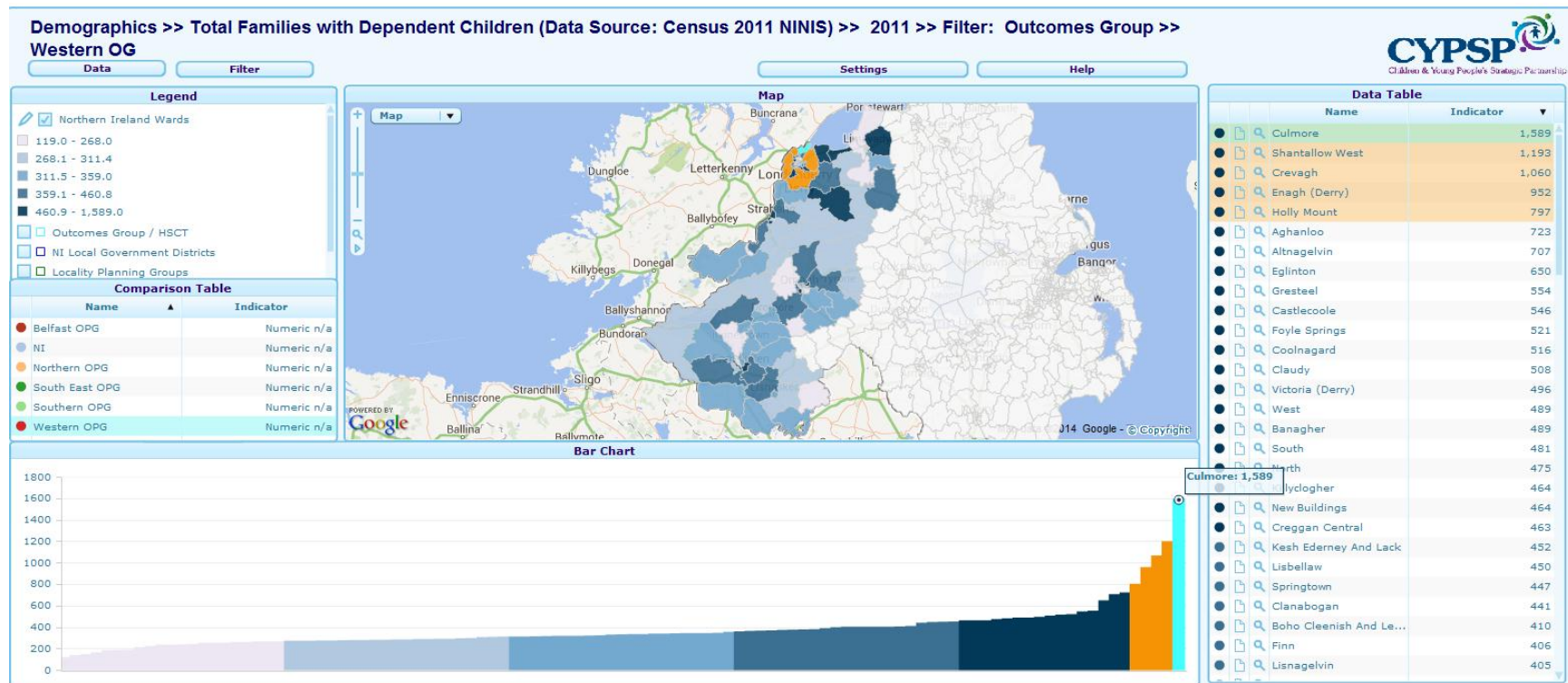
DEMOGRAPHICS



The above map shows the population of children and young people within the Western Outcomes Area aged 0 -17 at Census 2011. Culmore has the highest number with 2,995 and the highest five areas are highlighted in the data table and geographically on the map. Overall there are approximately 74,354 children and young people living in the Western Outcomes area. Figures below show the highest 5 in each LGD.

Derry		Fermanagh		Limavady		Omagh		Strabane	
Data Table		Data Table		Data Table		Data Table		Data Table	
Name	Indicator	Name	Indicator	Name	Indicator	Name	Indicator	Name	Indicator
Culmore	2,995	Castlecoole	931	Aghanloo	1,291	Clanabogan	948	West	902
Shantallow West	2,197	Lisbellaw	918	Gresteele	968	Coolnagard	941	South	849
Crevagh	1,960	Kesh Ederney And Lack	905	Upper Glenshane	718	Killyclogher	885	North	839
Enagh (Derry)	1,704	Boho Cleenish And Let...	815	Enagh (Limavady)	630	Drumnakilly	849	Finn	744
Holly Mount	1,488	Maguiresbridge	782	Forest	616	Gortin	809	Artigarvan	714

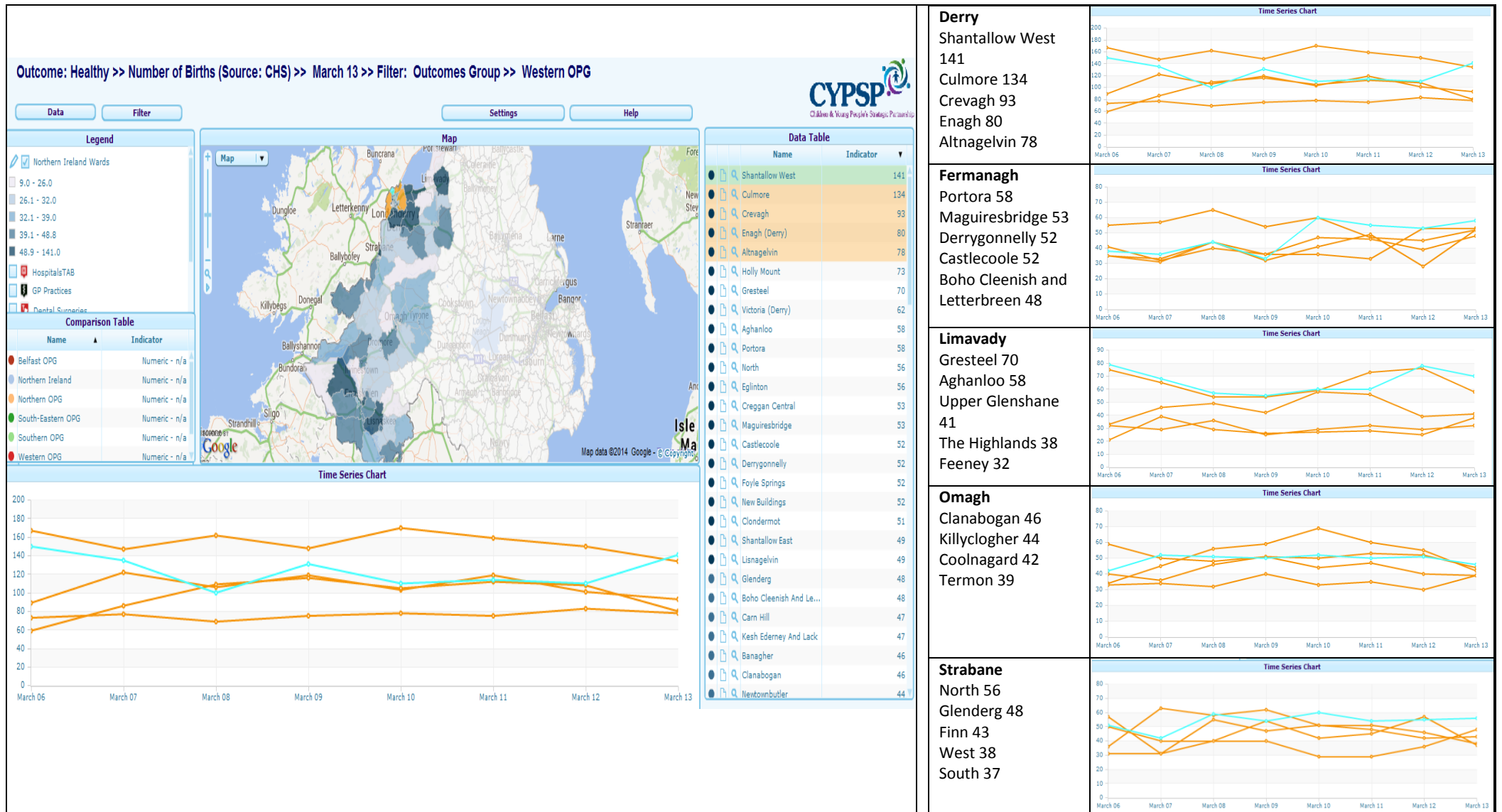
DEMOGRAPHICS



This map shows the total number of families across the Western Outcomes area highlighting again the 5 wards with the highest number of families. Again Culmore has the highest number of families with dependent children = 1,589. Figures below show the highest 5 in each LGD.

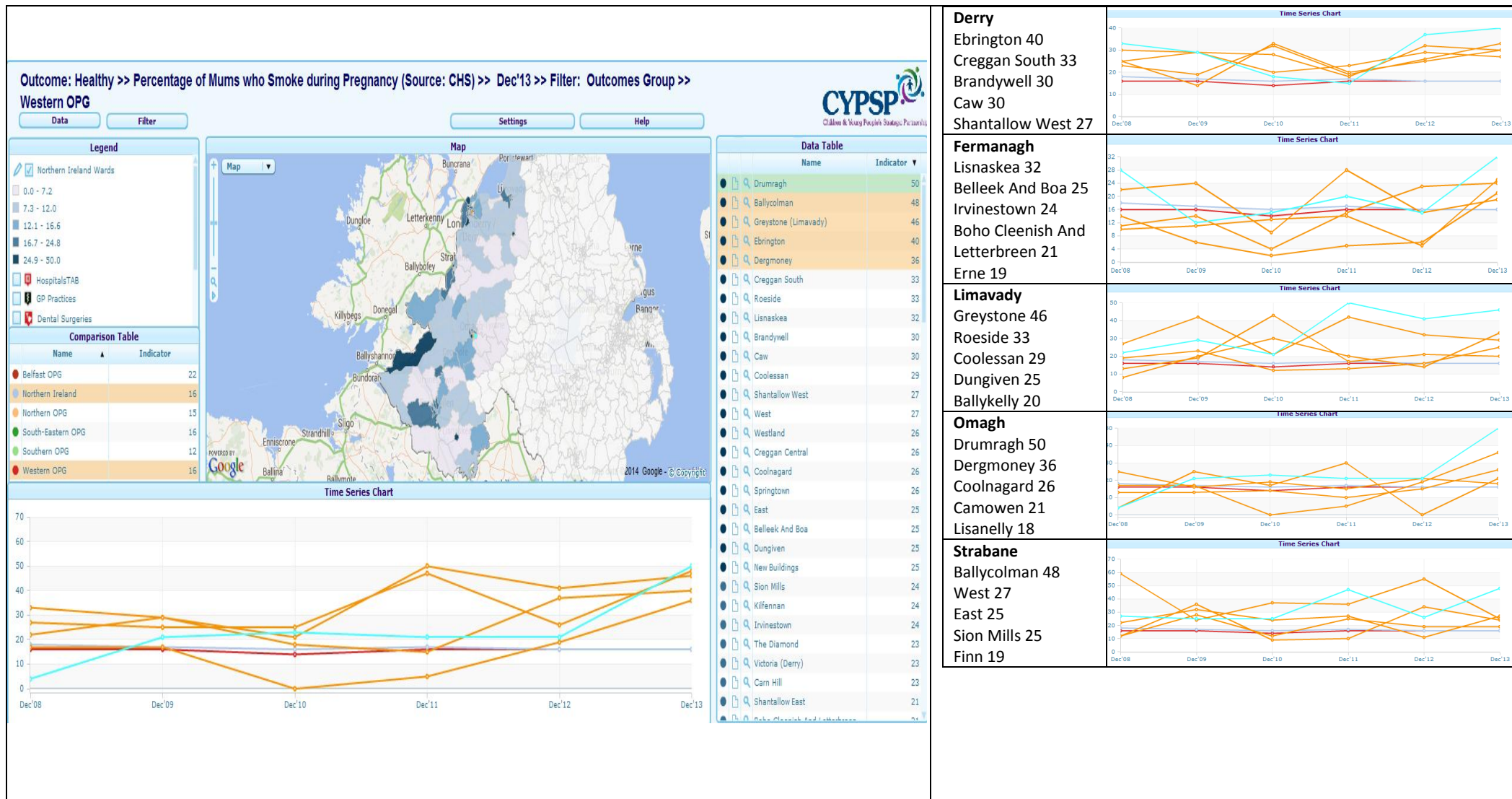
Derry				Fermanagh				Limavady				Omagh				Strabane			
Data Table				Data Table				Data Table				Data Table				Data Table			
Name	Indicator			Name	Indicator			Name	Indicator			Name	Indicator			Name	Indicator		
Culmore	1,589			Castlecoole	546			Aghanloo	723			Coolnagard	516			West	489		
Shantallow West	1,193			Kesh Ederney And Lack	452			Gresteel	554			Killyclogher	464			South	481		
Crevagh	1,060			Lisbellaw	450			Upper Glenshane	370			Clanabogan	441			North	475		
Enagh (Derry)	952			Boho Cleenish And Le...	410			Enagh (Limavady)	365			Gortrush	404			Finn	406		
Holly Mount	797			Maguiresbridge	400			Forest	336			Drumnakilly	403			Artigarvan	390		

HEALTHY



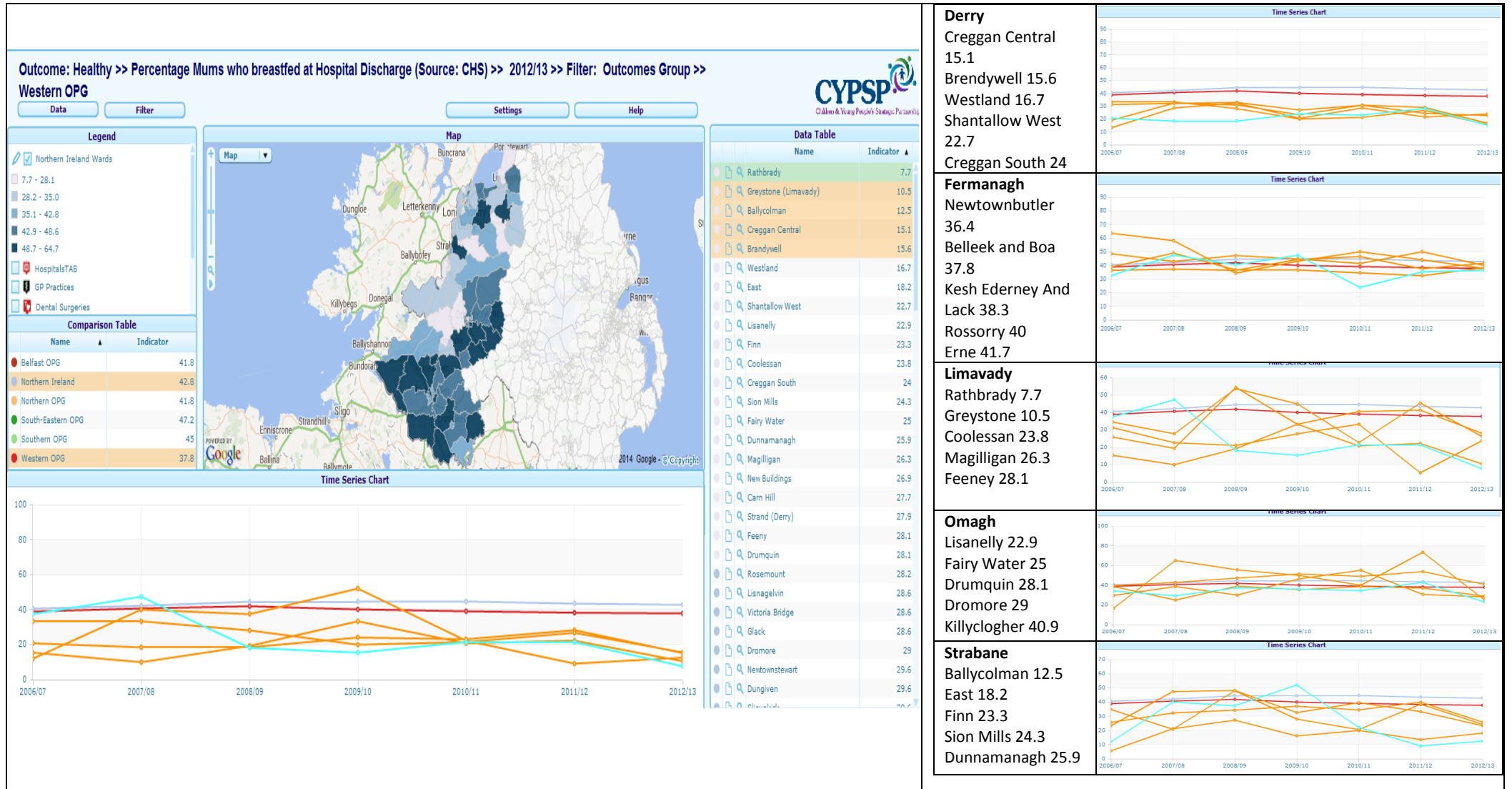
The top 5 areas with the highest births in the Western Outcomes Area for the year ending March 2013 are highlighted above with highest being Shantallow West with 141 and this is trended in the time series chart over the last 7 years. *Note: Trend lines should be read in conjunction with the data table i.e. highest as highlighted.*

HEALTHY



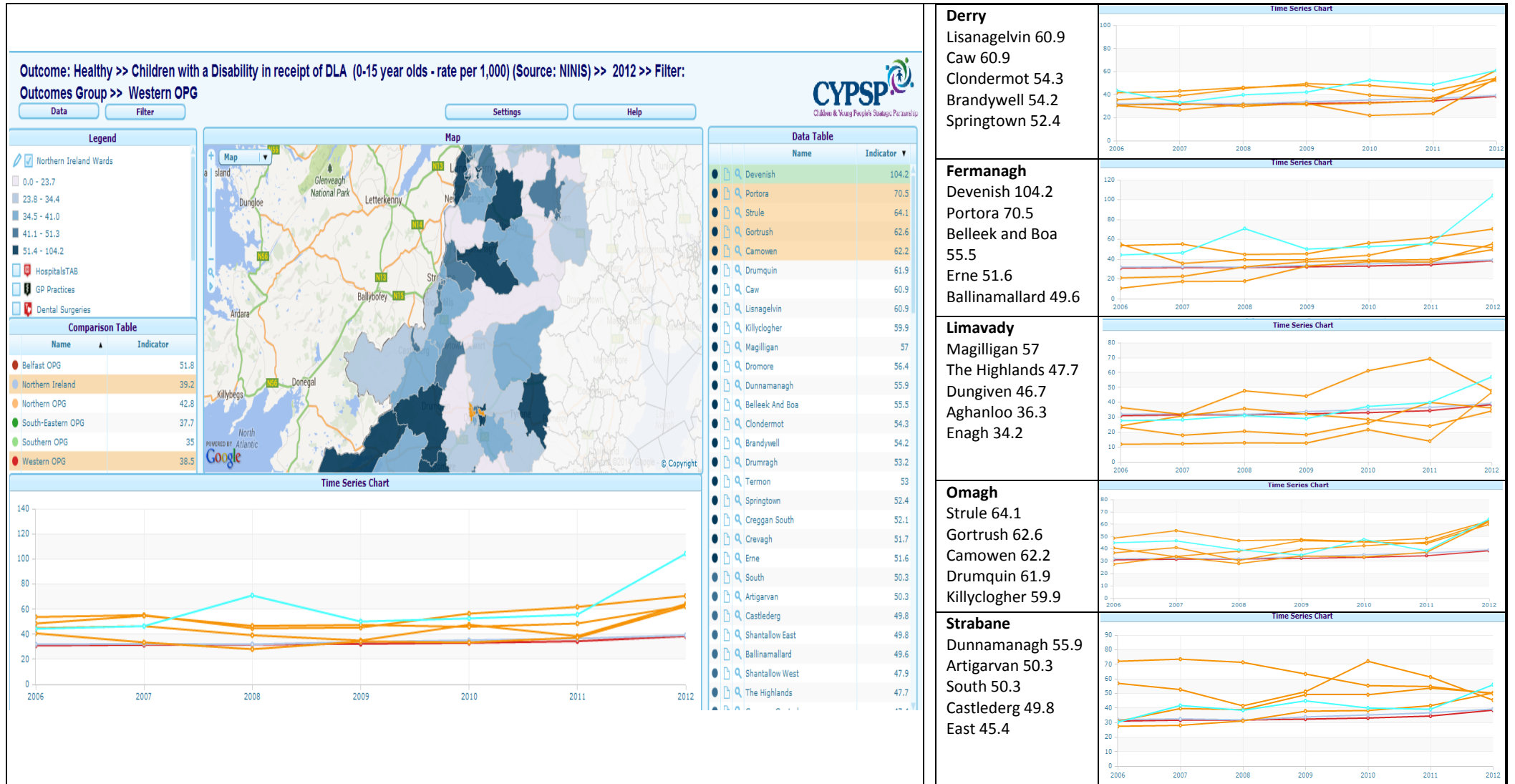
The worst 5 wards are highlighted here for percentage mums who smoke during pregnancy with Drumragh being worst with 50%. The data table shows in descending order the top 20% of wards with the highest percentage of mums smoking during pregnancy. The Western Outcomes Group average is depicted in red on the Time Series Chart. The Northern Ireland average is the pale blue line. *Note: Trend lines should be read in conjunction with the data table i.e. highest as highlighted.*

HEALTHY



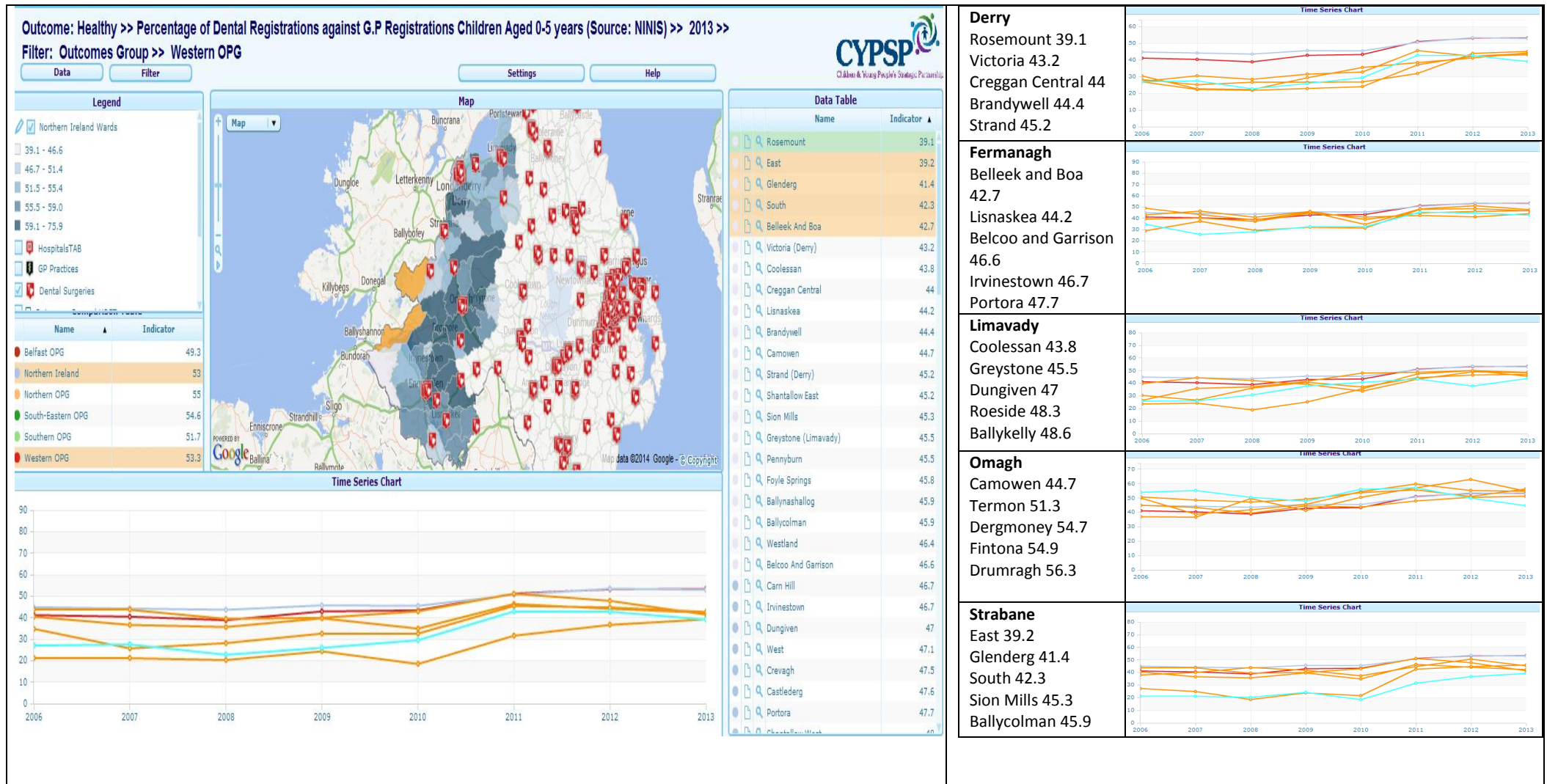
The worst 5 wards are highlighted here for percentage mums breastfeeding on discharge from hospital with Rathbrady being worst with 7.7%. The data table shows in ascending order the top 20% of wards with the lowest percentage of mums that breastfed at hospital discharge. The Western Outcomes Group average is depicted as a red line on the Time Series Chart. The Northern Ireland average is the pale blue line. *Note: Trend lines should be read in conjunction with the data table i.e. lowest as highlighted.*

HEALTHY



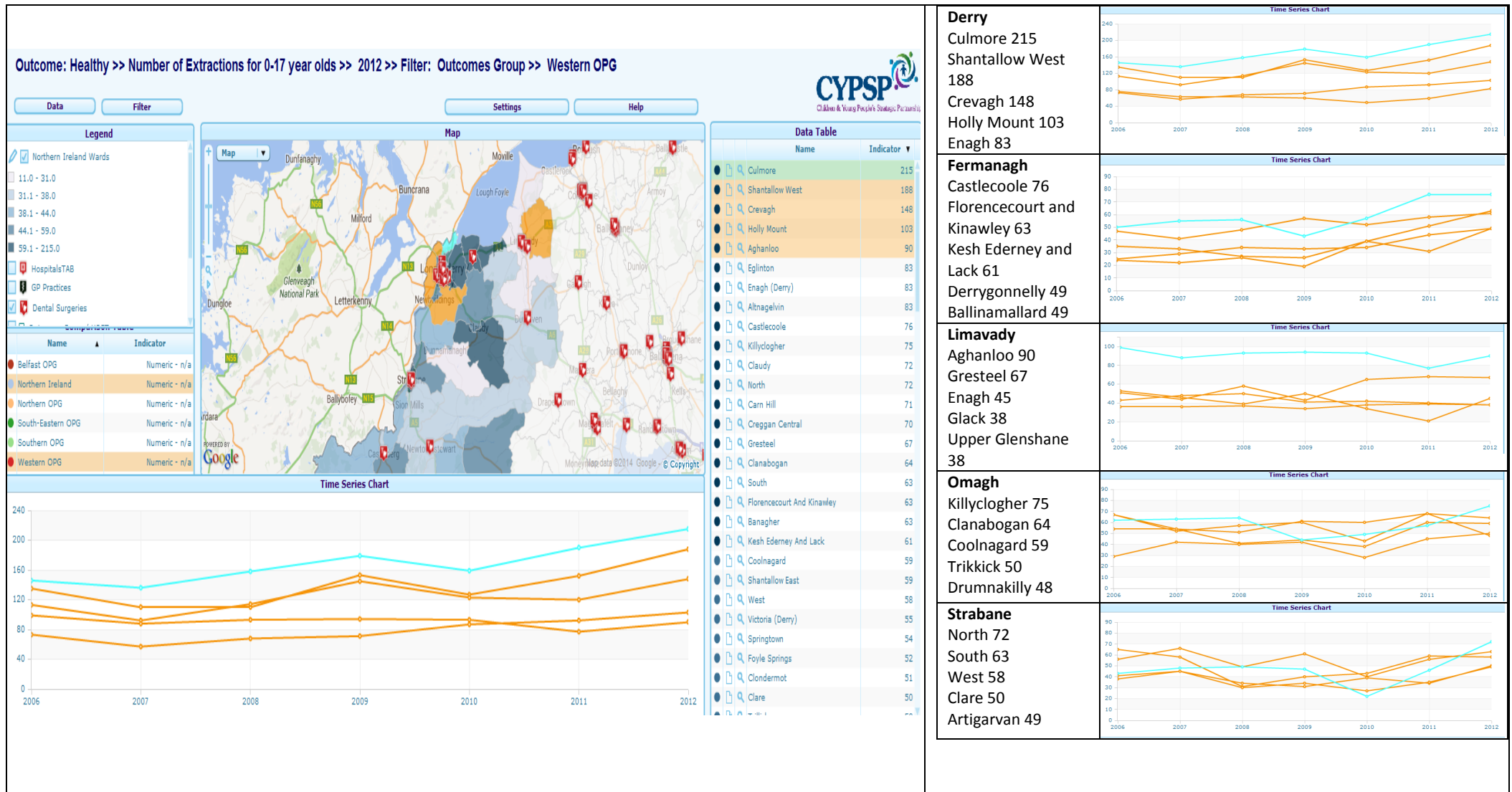
When we look at the rate of children aged between 0 – 15 years who are in receipt of DLA. The data table shows in descending order the top 20% of wards with the highest percentage of children 0-15 who are in receipt of DLA. The majority of Wards are sitting above the Northern Ireland average of 39.2 (pale blue line). The top five wards are highlighted above with Devenish having a rate of 104.2 which would equate to 10.4% of its 0-15 population. *Note: Trend lines should be read in conjunction with the data table.*

HEALTHY



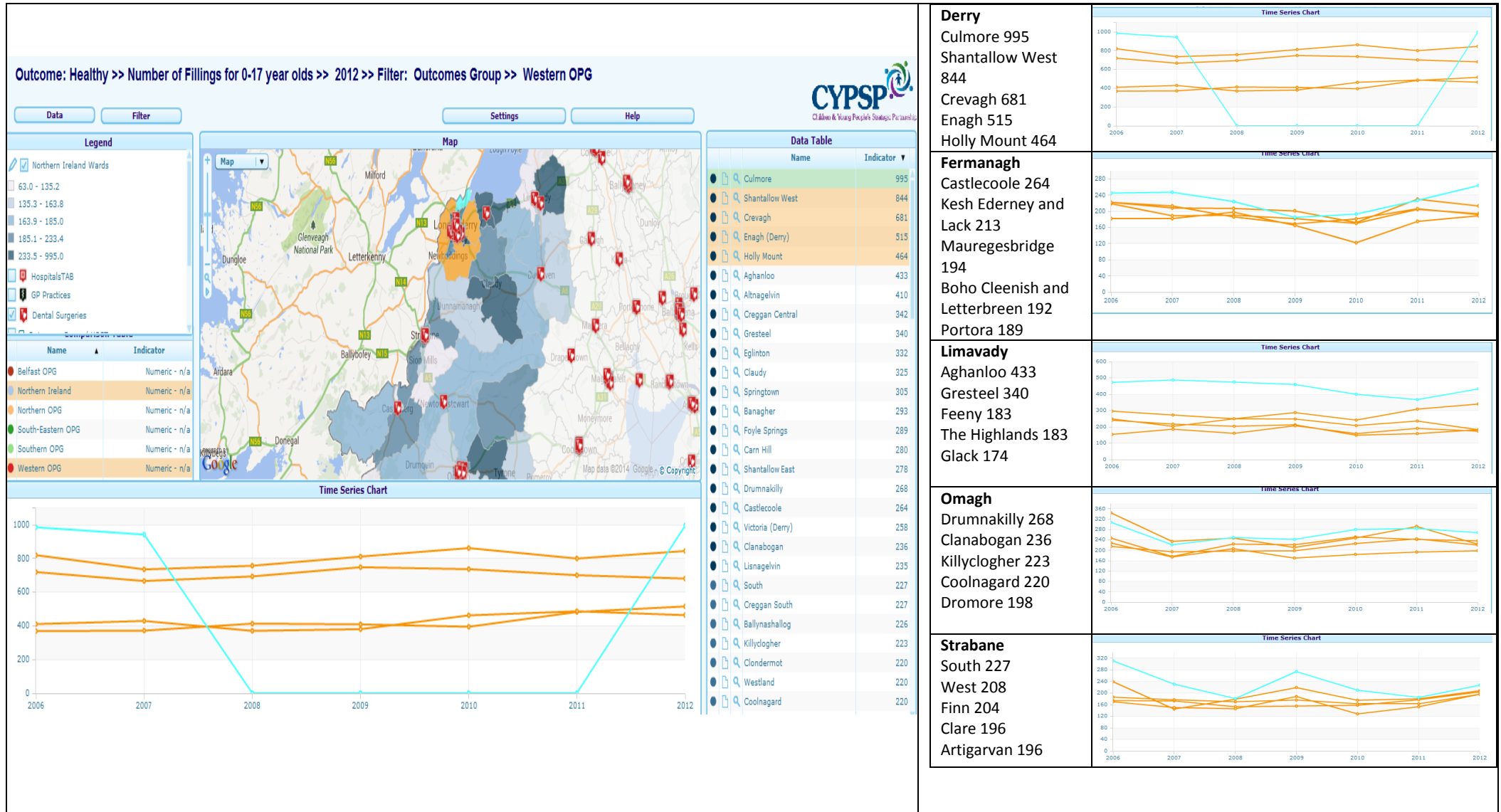
The worst 5 wards are highlighted here for percentage of children aged 0 – 5 who are registered with a Dentist with Rosemount being worst with 39.1%. The data table shows in ascending order the top 20% of wards with the lowest percentage of Dental Registrations against G.P Registrations children aged 0-5 years. The Western Outcomes Group average is depicted in a red line on the Time Series chart. The Northern Ireland average is the pale blue line. The map also shows the location of all Dental Practices across the area. It is interesting to note the higher registrations are in areas where there are fewer practices. *Note: Trend lines should be read in conjunction with the data table i.e. lowest as highlighted.*

HEALTHY



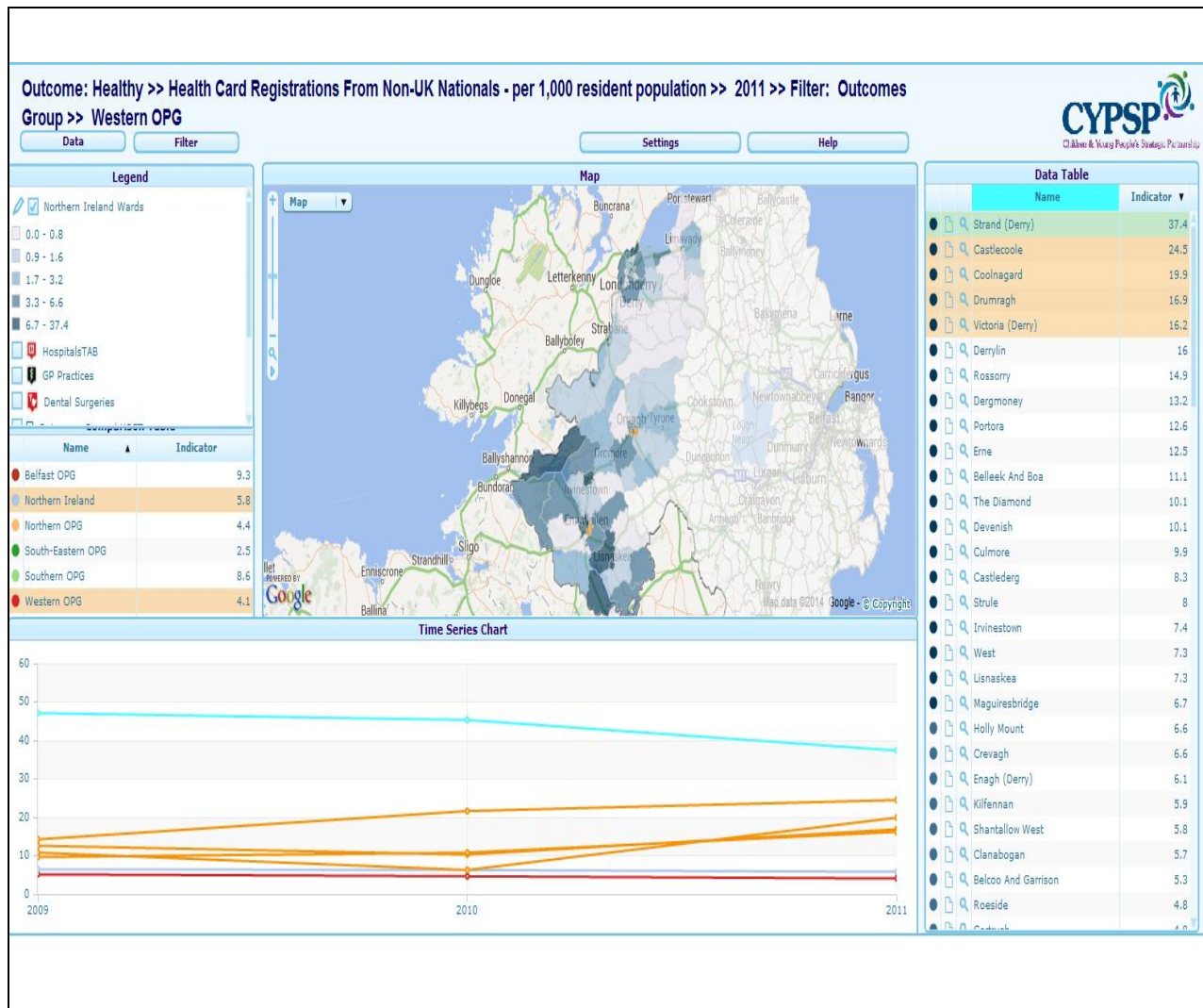
The worst 5 wards are highlighted here for 0 – 17 year olds for the number of Extractions with Culmore being worst with 215. The data table shows in descending order the top 20% of wards with the highest number of Dental Extractions for 0-17 year olds within the Western Outcomes Group area. *Note: Trend lines should be read in conjunction with the data table.*

HEALTHY



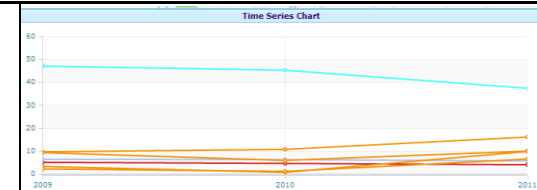
The worst 5 wards are highlighted here of 0 – 17 year olds for the number of Fillings with Culmore being highest with 995. The data table shows in descending order the top 20% of wards with the highest number of Dental Extractions for 0-17 year olds within the Western Outcomes Group area. *Note: Trend lines should be read in conjunction with the data table.*

HEALTHY



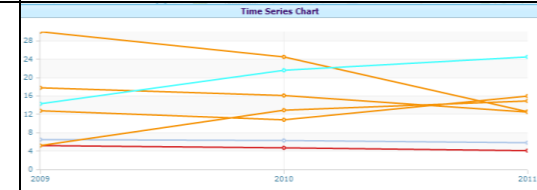
Derry

Strand	37.4
Victoria	16.2
The Diamond	10.1
Culmore	9.9
Holly Mount	6.6



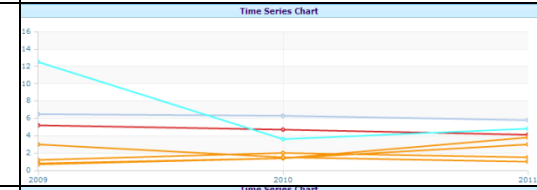
Fermanagh

Castlecoole 24.5
Derrylin 16
Rossorry 14.9
Portora 12.6
Erne 12.5



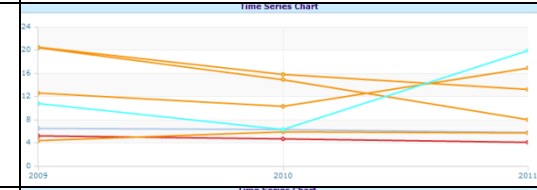
Limavady	
----------	--

Roeside 4.8
Greestel 3.8
Aghanloo 3
Forest 1.5
Dungiven 1

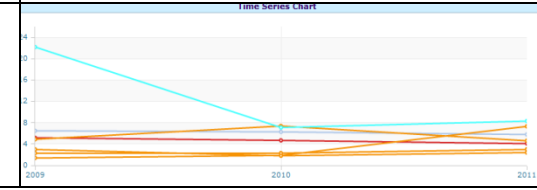


Omagh	
-------	--

Coolnagard 19.9
Drumragh 16.9
Dergmoney 13.2
Strule 8
Glanabogan 5.7

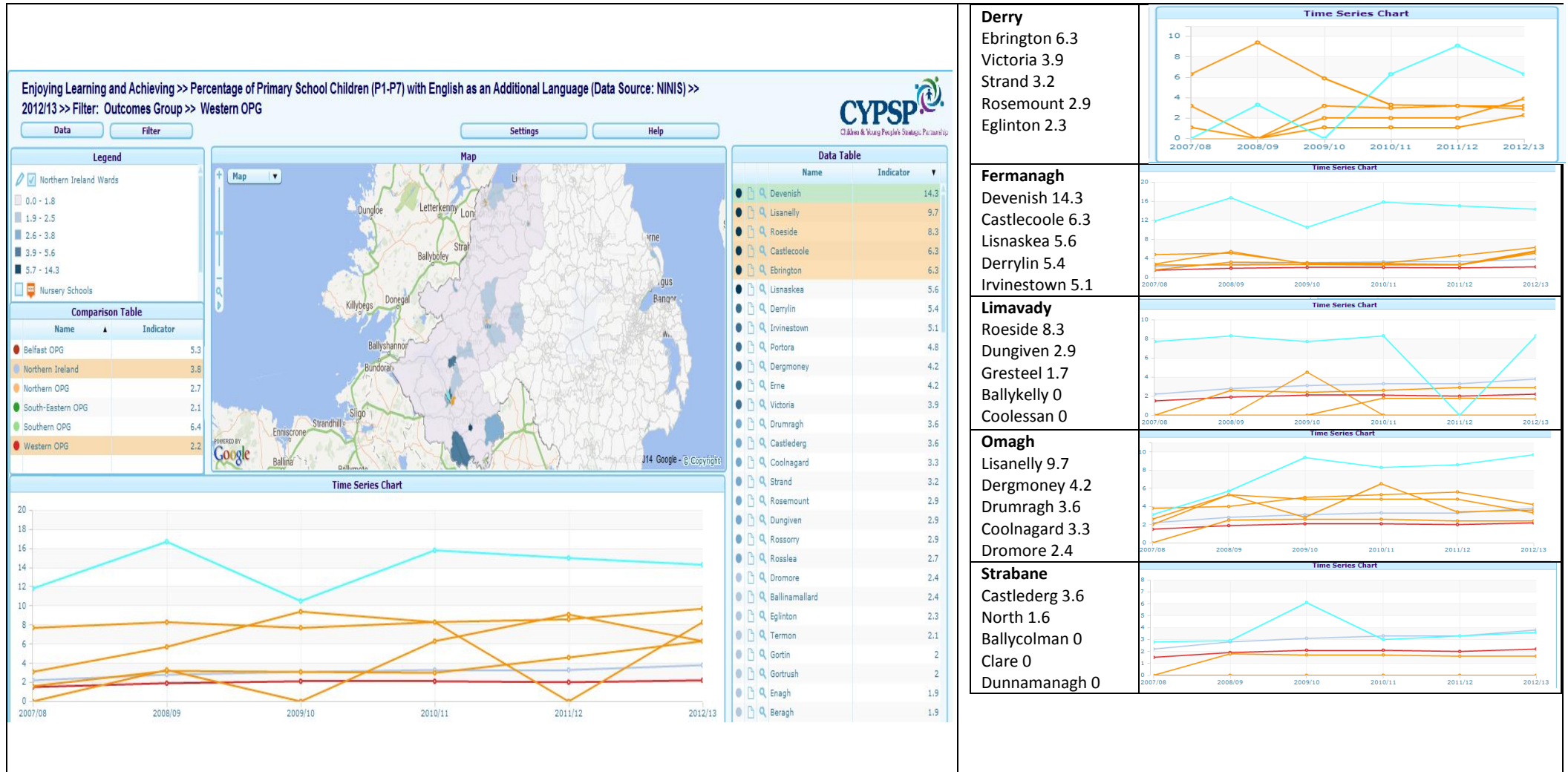
**Strabane**

Castlederg 8.3
West 7.3
South 4.6
Newtownstewart 3
Finn 2.4



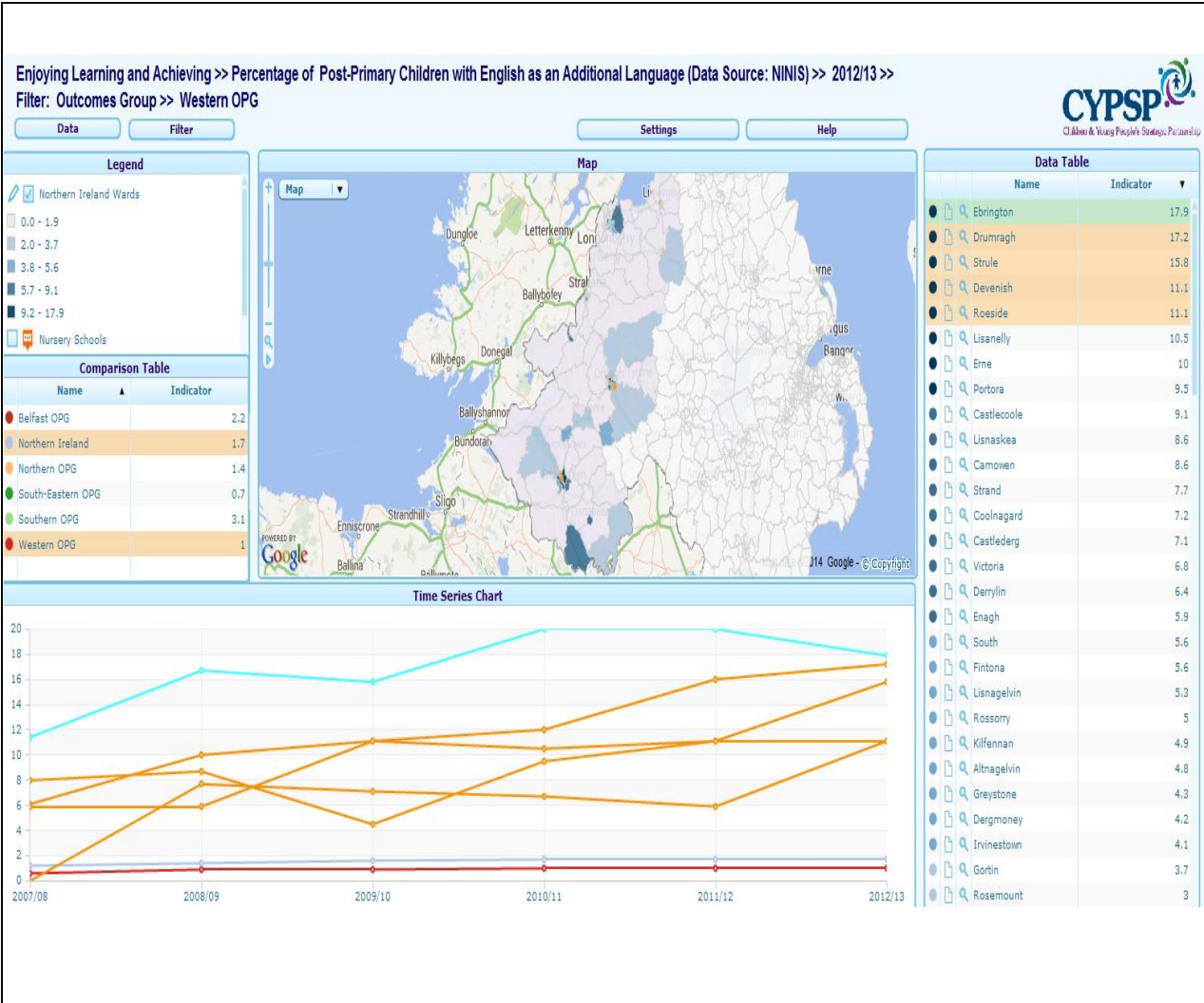
When we look at the rate of health card registrations for non-UK nationals the majority are within the Strand area. The five wards are highlighted above with Strand having a rate of 37.4 which would equate to 3.7% of its population. The data table shows in descending order the top 20% of wards with the highest rate of Health Card registrations from Non-UK Nationals. *Note: Trend lines should be read in conjunction with the data table.*

ENJOYING, LEARNING AND ACHIEVING



The highest 5 wards are highlighted here for percentage of primary school children who have English as an additional language with Devenish seeing the highest with 14.3%. The data table shows in descending order the top 20% of wards that are sitting above the Western Outcomes Group average which is depicted in red on the Time Series Chart. The Northern Ireland Average is pale blue line. *Note: Trend lines should be read in conjunction with the data table i.e. highest as highlighted.*

ENJOYING, LEARNING AND ACHIEVING



Derry

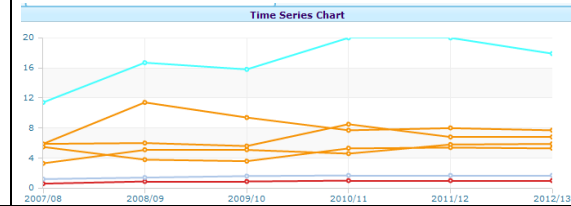
Ebrington 17.9

Strand 7.7

Victoria 6.8

Enagh 5.9

Lisnagelvin 5.3



Fermanagh

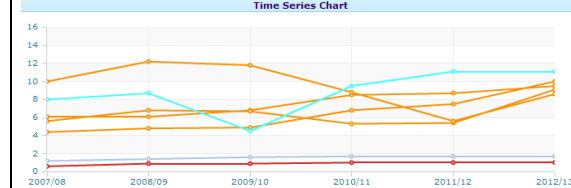
Devenish 11.1

Erne 10

Portora 9

Castlecoole 9.1

Lisnaskea 8.6



Limavady

Roeside 11.1

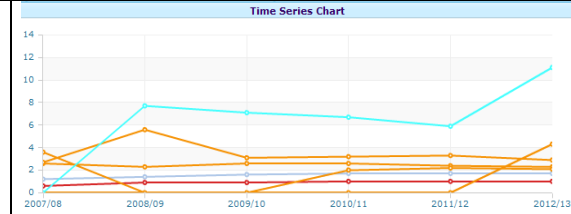
Greystone 4.3

Dungiven 2.9

Enagh 2.3

Upper Glenshane

2.1



Omagh

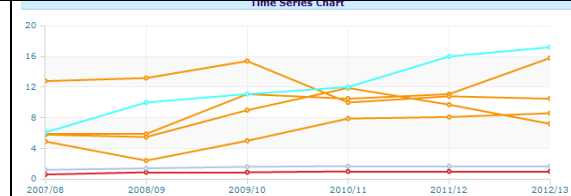
Drumragh 17.2

Strule 15.8

Lisanelly 10

Camowen 8

Coolnagard 7.2



Strabane

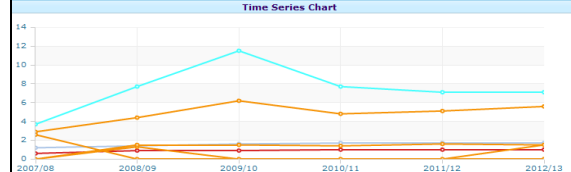
Castledery 7.1

South 5.6

West 1.5

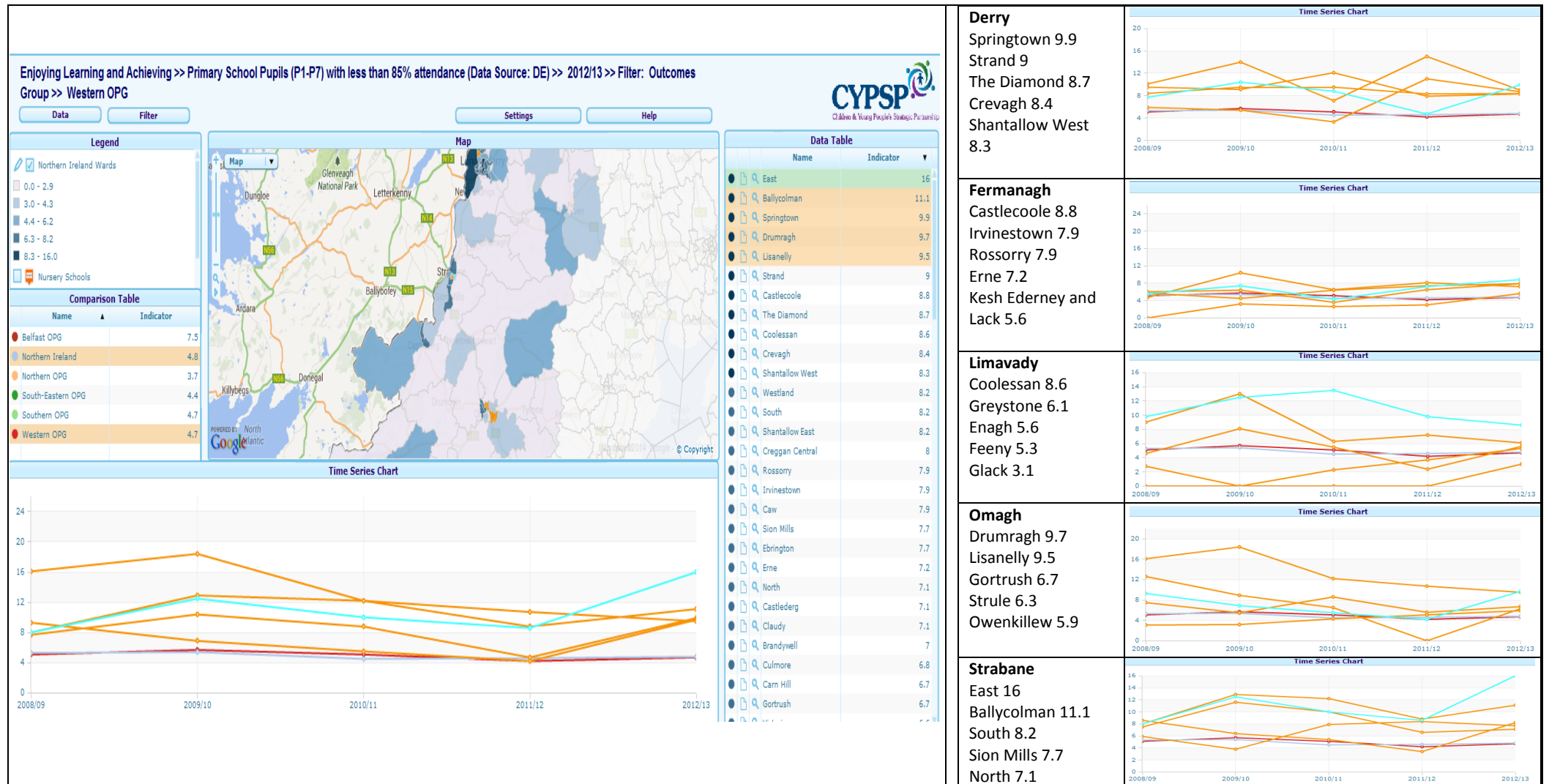
North 1.5

Ballycolman 0



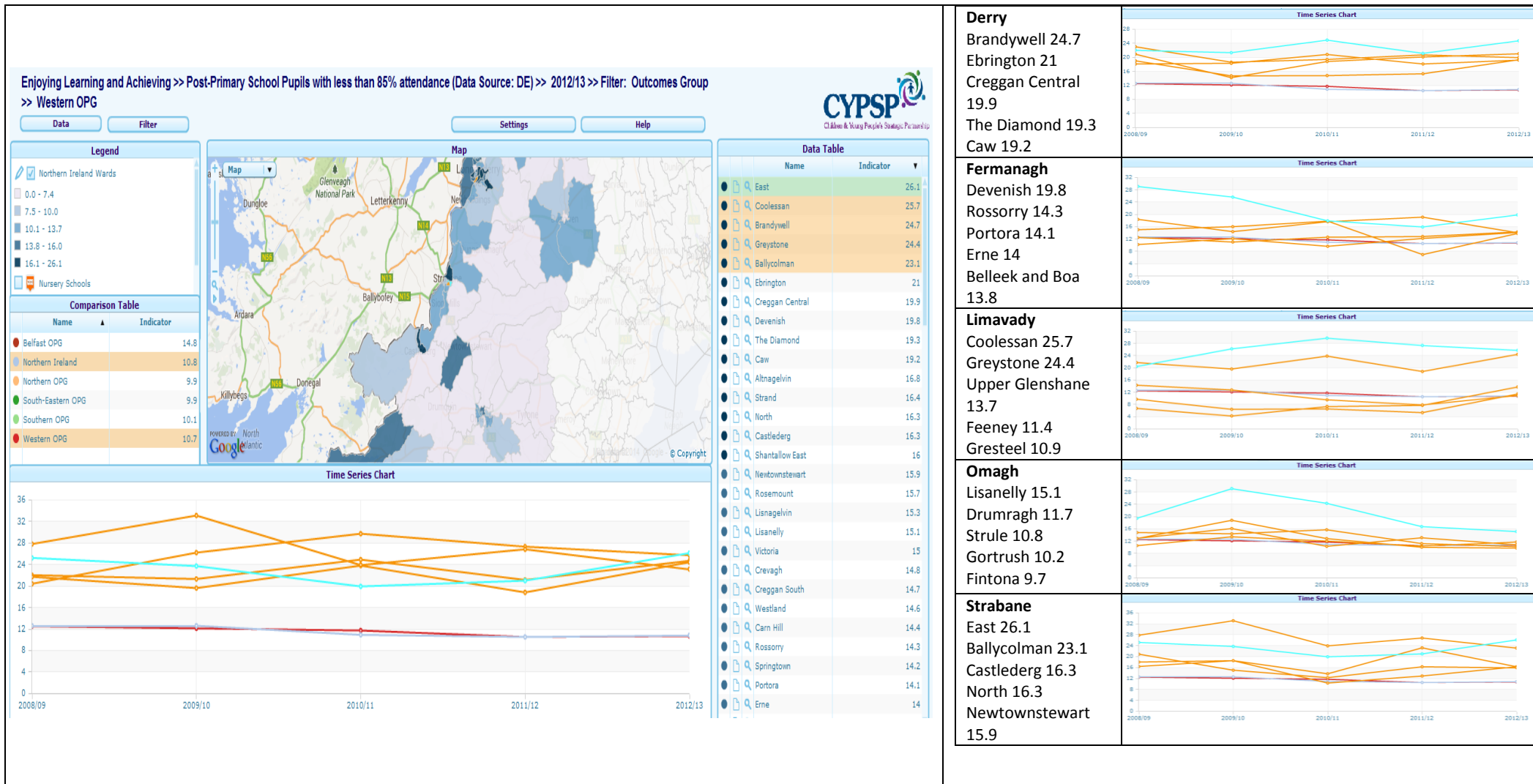
The highest 5 wards are highlighted here for percentage of post primary school children who have English as an additional language with Ebrington seeing the highest with 17.9%. The data table shows in descending order the top 20% of wards above the Western Outcomes Group average which is depicted in red on the Time Series Chart. The Northern Ireland average is the pale blue line. *Note: Trend lines should be read in conjunction with the data table i.e. highest as highlighted.*

ENJOYING, LEARNING AND ACHIEVING



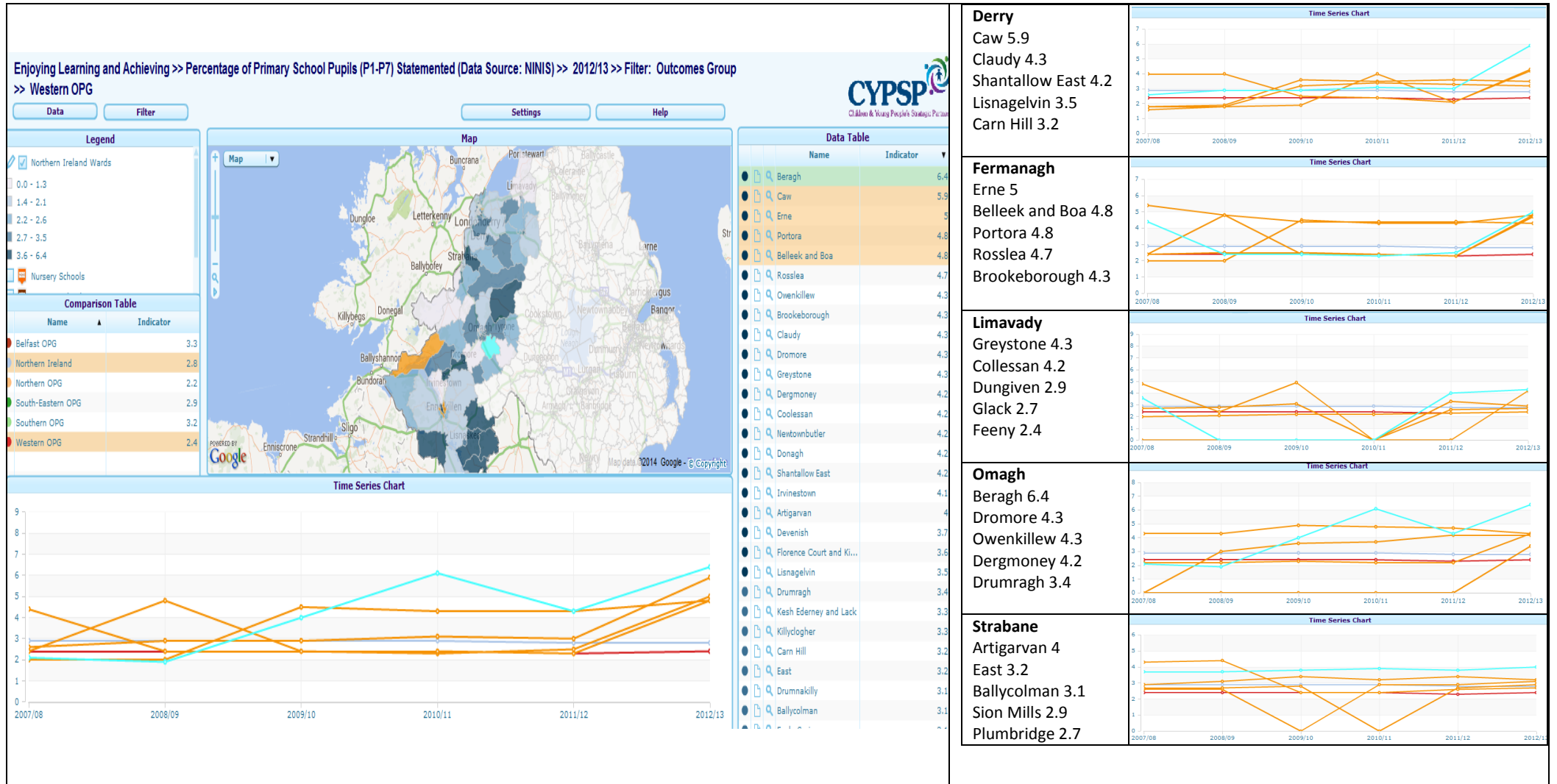
The highest 5 wards are highlighted here for percentage of primary school children with less than 85% attendance with East (Strabane) seeing the highest with 16%. The data table shows in descending order the top 20% of wards above the Western Outcomes Group average which is depicted in red on the Time Series Chart. The Northern Ireland average is the pale blue line. *Note: Trend lines should be read in conjunction with the data table i.e. highest as highlighted.*

ENJOYING, LEARNING AND ACHIEVING



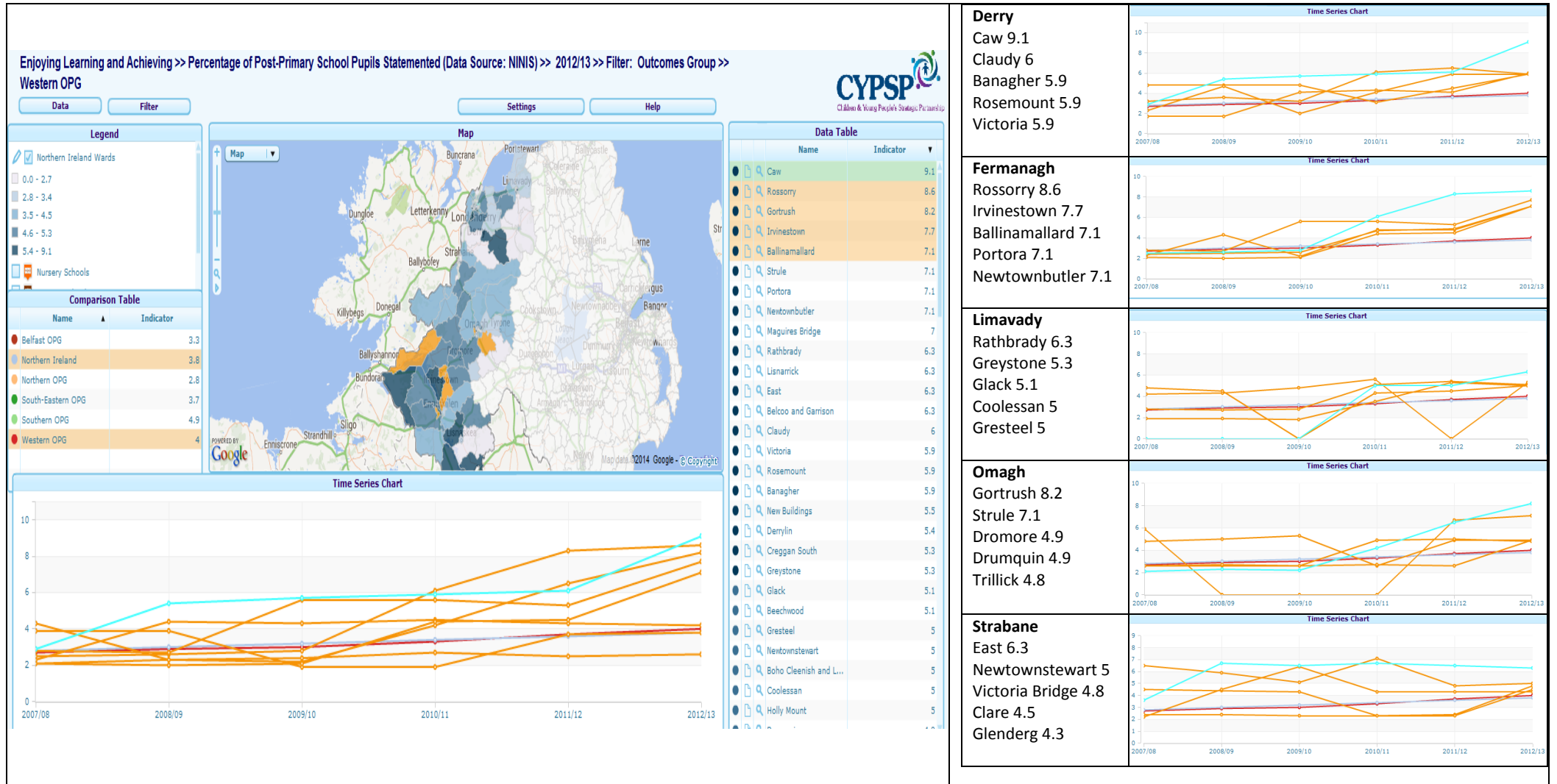
The highest 5 wards are highlighted here for percentage of post-primary school children with less than 85% attendance with East seeing the highest with 26.1%. The data table shows in descending order the top 20% of wards above the Western Outcomes Group average which is depicted in red on the Time Series Chart. The Northern Ireland average is the pale blue line. *Note: Trend lines should be read in conjunction with the data table i.e. highest as highlighted.*

ENJOYING, LEARNING AND ACHIEVING



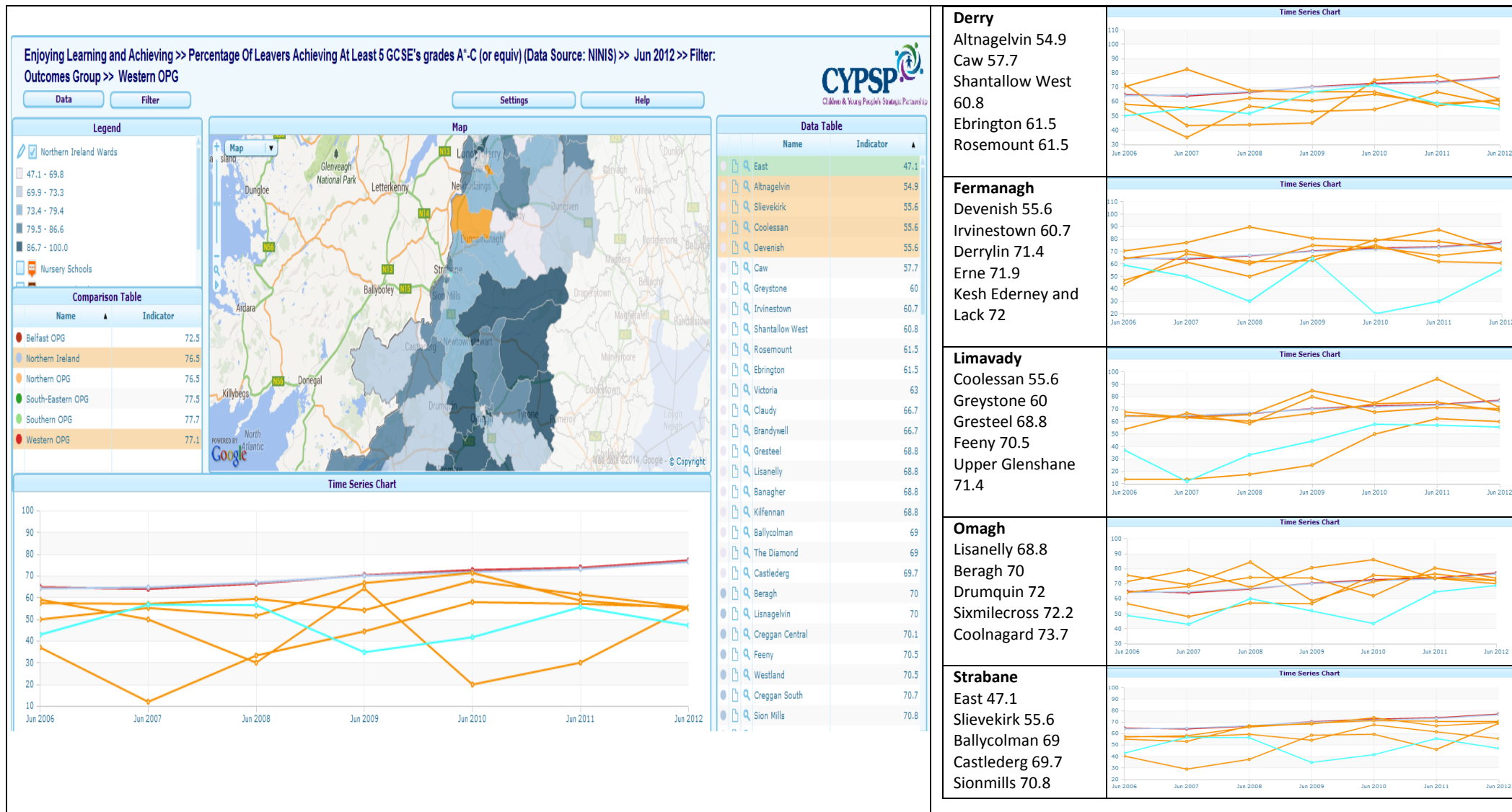
The highest 5 wards are highlighted here for percentage of primary school children who have a full Statement of educational needs with Beragh seeing the highest with 6.4%. The data table shows in descending order the top 20% of wards above the Western Outcomes Group average which is depicted in red on the Time Series Chart. The Northern Ireland average is the pale blue line. *Note: Trend lines should be read in conjunction with the data table i.e. highest as highlighted.*

ENJOYING, LEARNING AND ACHIEVING



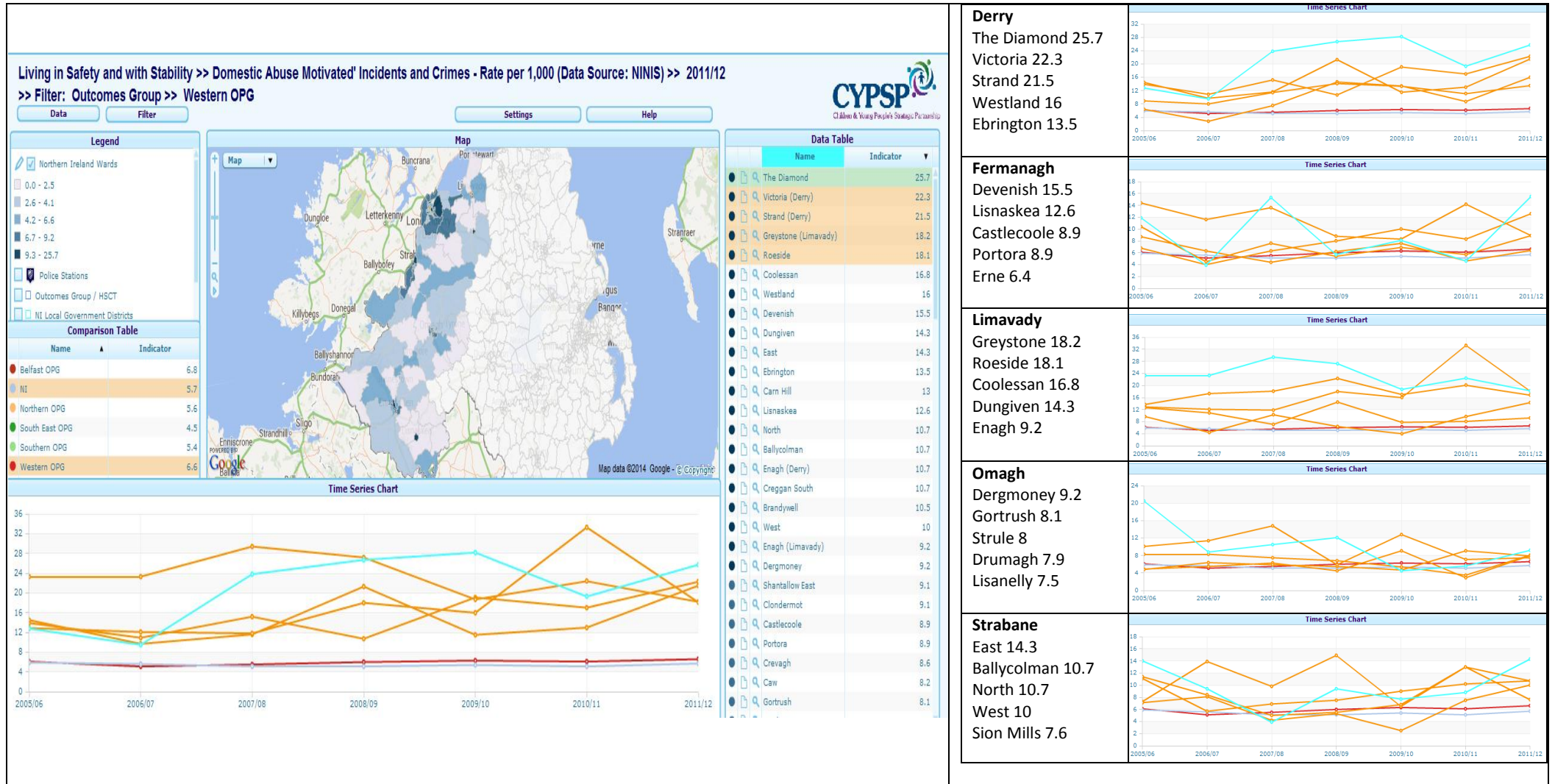
The highest 5 wards are highlighted here for percentage of post-primary school children who have a full Statement of educational needs with Caw seeing the highest with 9.1%. The data table shows in descending order the top 20% of wards above the Western Outcomes Group average which is depicted in red on the Time Series Chart. The Northern Ireland average is the pale blue line. *Note: Trend lines should be read in conjunction with the data table i.e. highest as highlighted.*

ENJOYING, LEARNING AND ACHIEVING



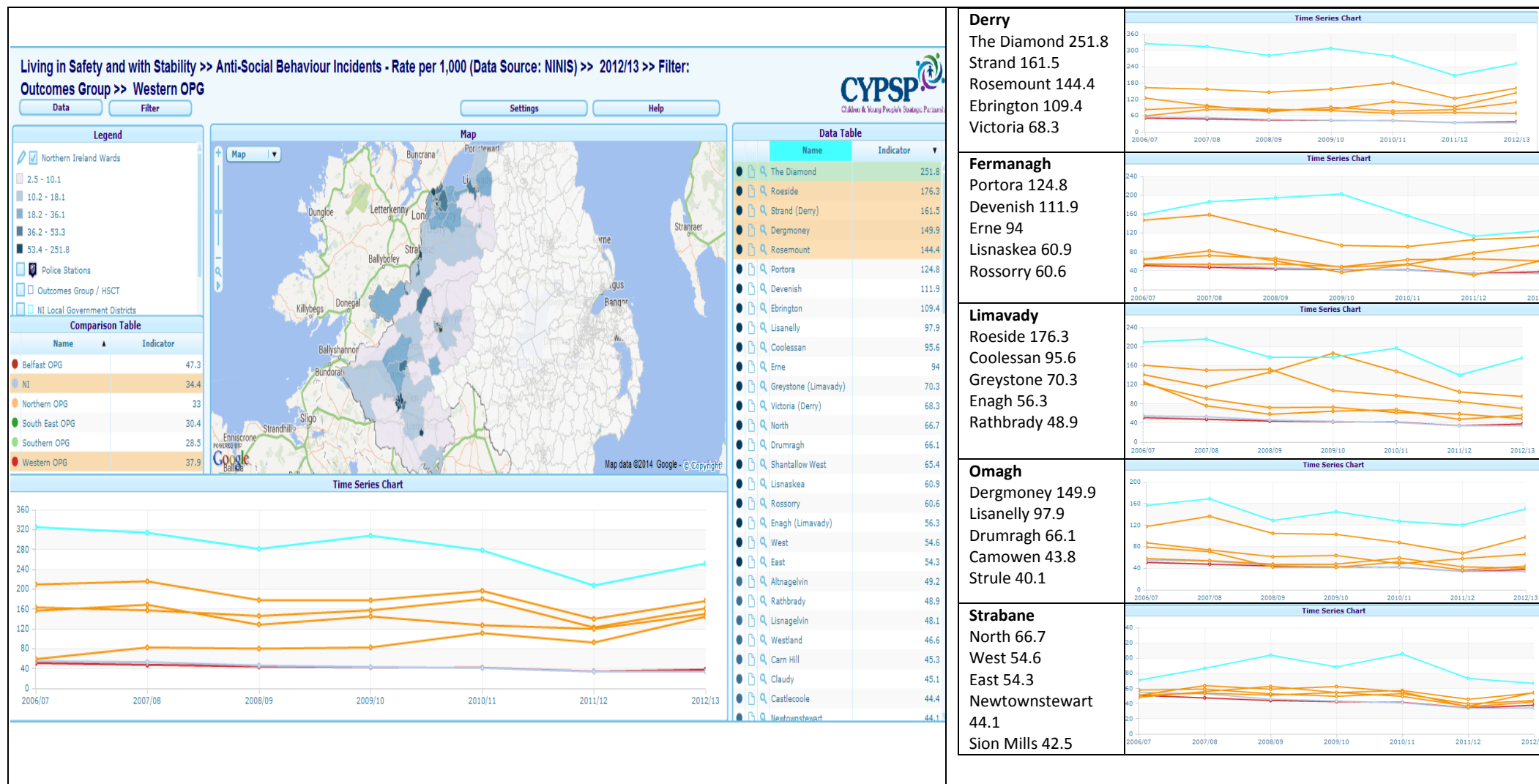
The poorest 5 wards are highlighted here for percentage of leavers achieving 5 GCSEs A-C (or equivalent) with East (Strabane) seeing the lowest with 47.1%. The data table shows in ascending order the top 20% of wards below the Western Outcomes Group average which is depicted in red on the Time Series Chart. The Northern Ireland average is the pale blue line. *Note: Trend lines should be read in conjunction with the data table i.e. lowest as highlighted.*

LIVING IN SAFETY AND WITH STABILITY

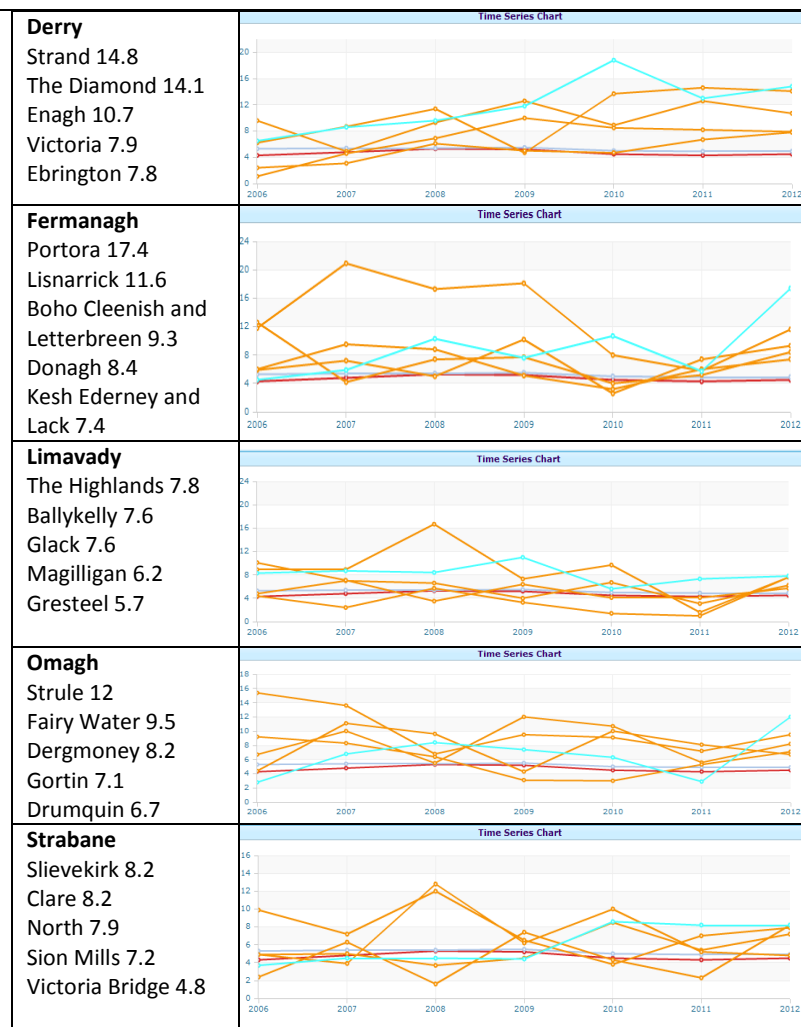
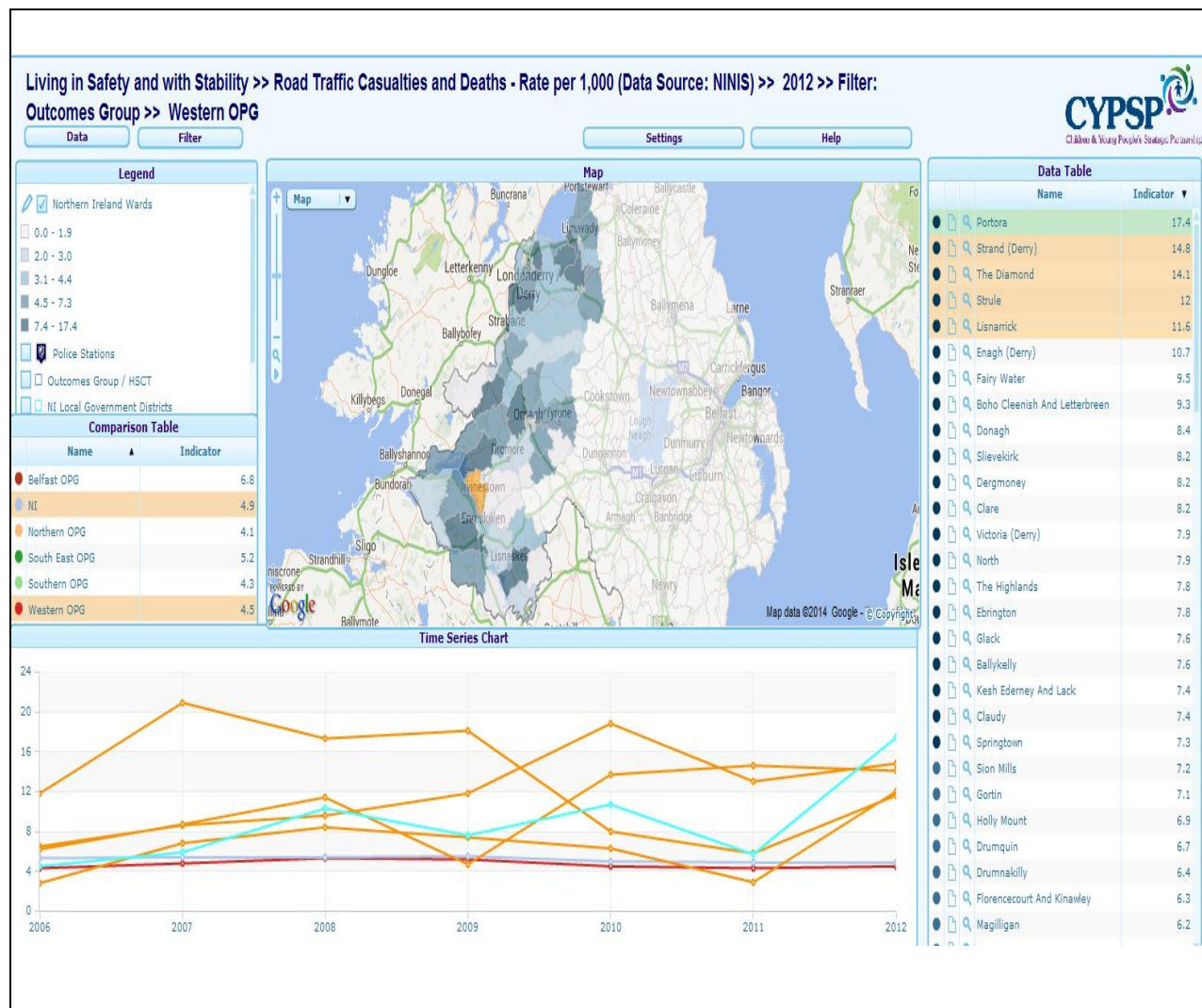


The highest 5 wards are highlighted here for rate of Domestic Abuse Incidents and Crimes with The Diamond seeing the highest with 25.7. The data table shows in descending order the top 20% of wards above the Western Outcomes Group average which is depicted in red on the Time Series Chart. The Northern Ireland average is the pale blue line. *Note: Trend lines should be read in conjunction with the data table i.e. highest as highlighted.*

LIVING IN SAFETY AND WITH STABILITY

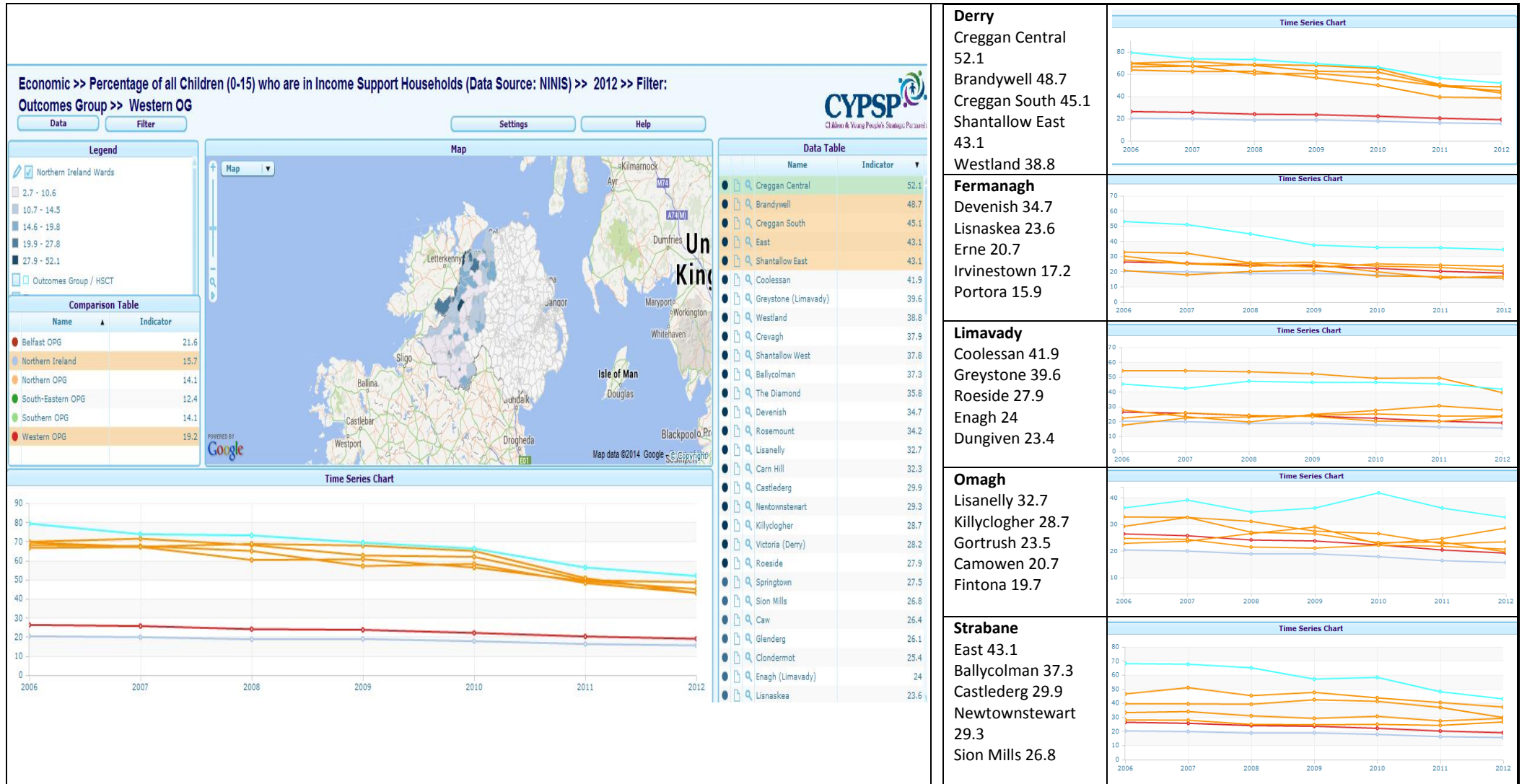


LIVING IN SAFETY AND WITH STABILITY



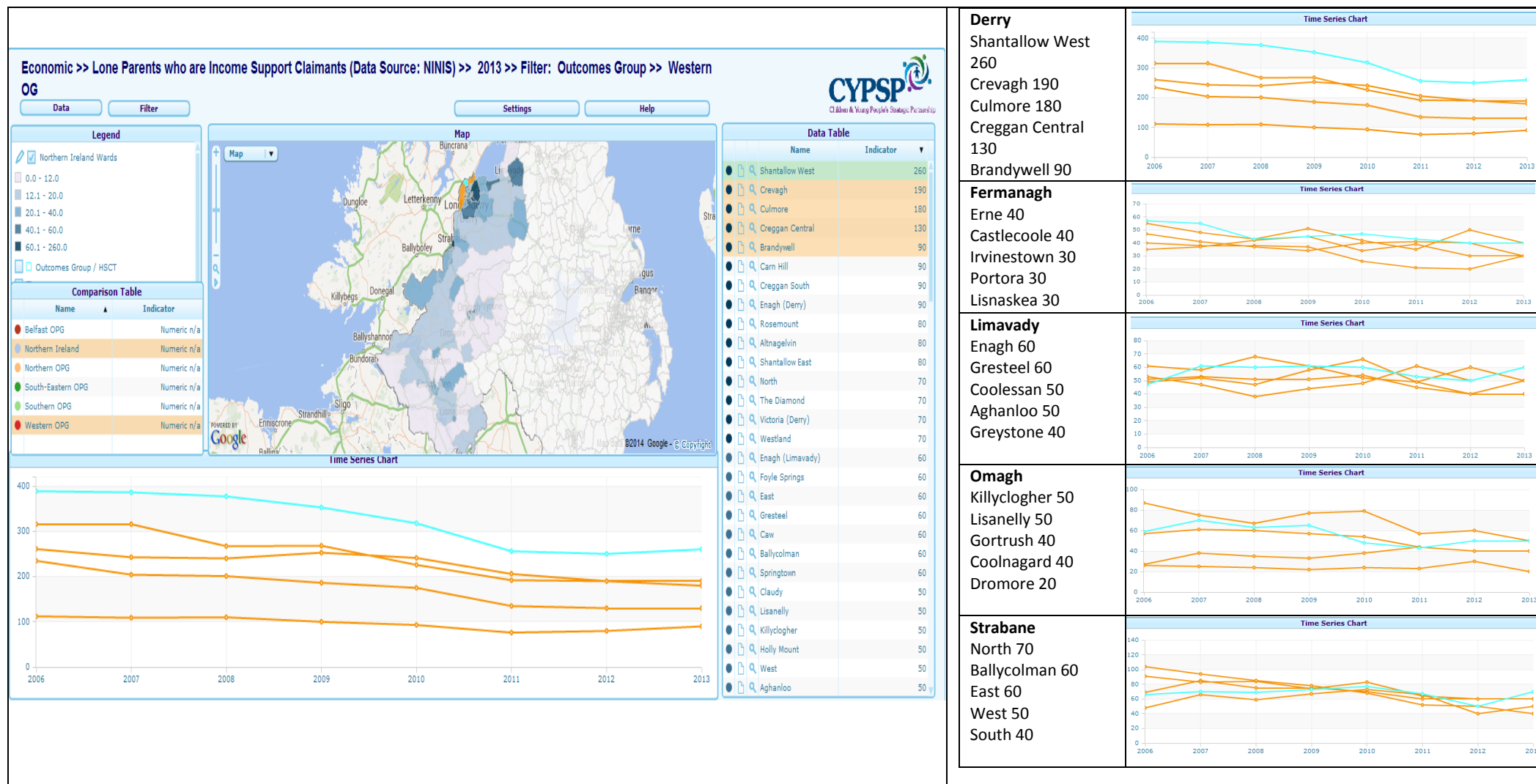
The highest 5 wards are highlighted here for rate of road traffic casualties and deaths with Portora seeing the highest with 17.4. The data table shows in descending order the top 20% of wards above the Western Outcomes Group average which is depicted in red on the Time Series Chart. The Northern Ireland average is the pale blue line. The map has been faded down to show the main roads within each ward area. *Not: Trend lines should be read in conjunction with the data table i.e. highest as highlighted.*

ECONOMIC AND ENVIRONMENTAL WELLBEING



The highest 5 wards are highlighted here for the percentage of children aged 0 – 15 who are living in Income Support households with Creggan Central seeing the highest with 52.1%. The data table shows in descending order the top 20% of wards above the Western Outcomes Group average which is depicted in red on the Time Series Chart. The Northern Ireland average is the pale blue line. *Note: Trend lines should be read in conjunction with the data table i.e. highest as highlighted.*

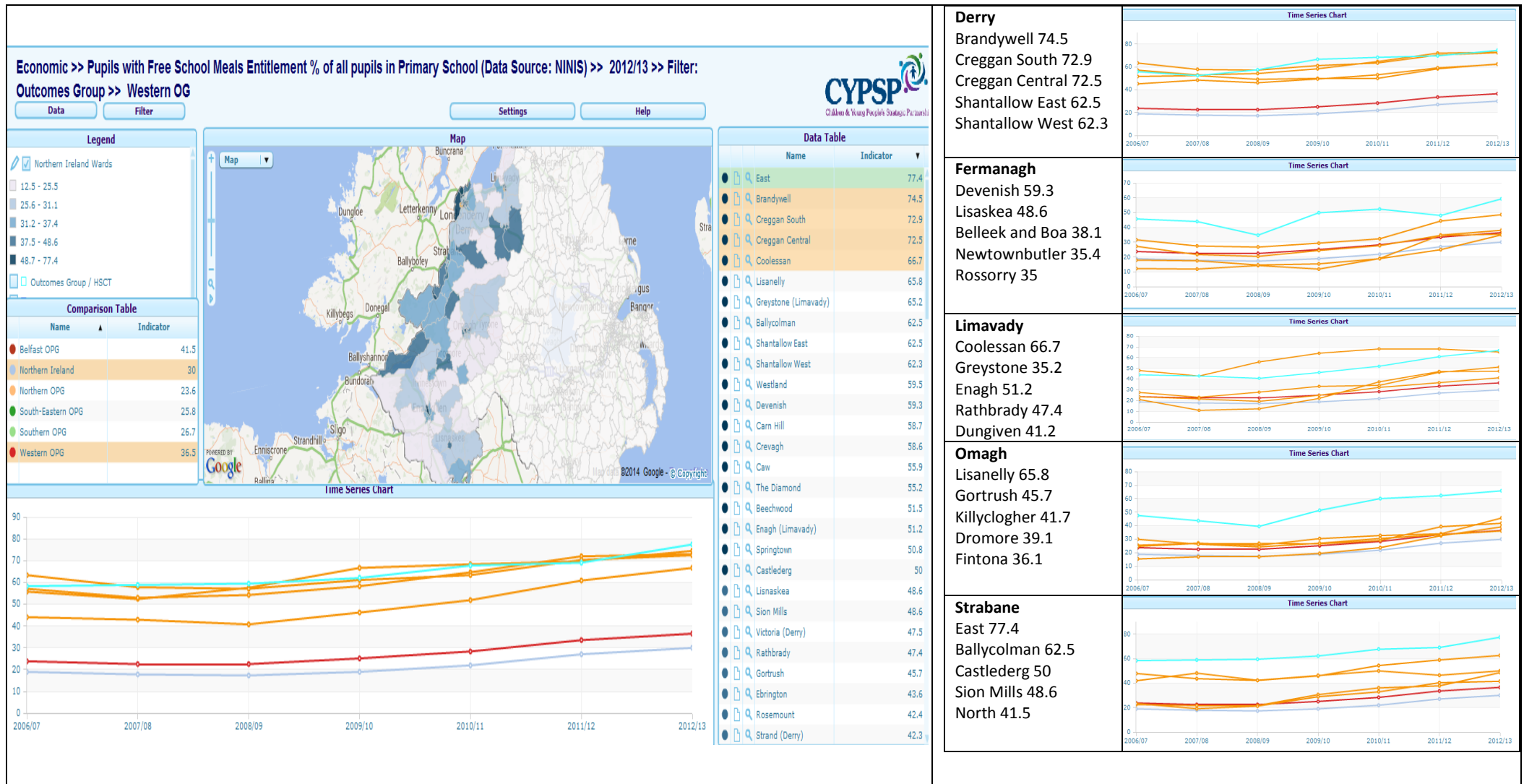
ECONOMIC AND ENVIRONMENTAL WELLBEING



In total there are 5480 Lone Parent families living on Income Support across the Western Outcomes area with Shantallow West having the highest number at 260.

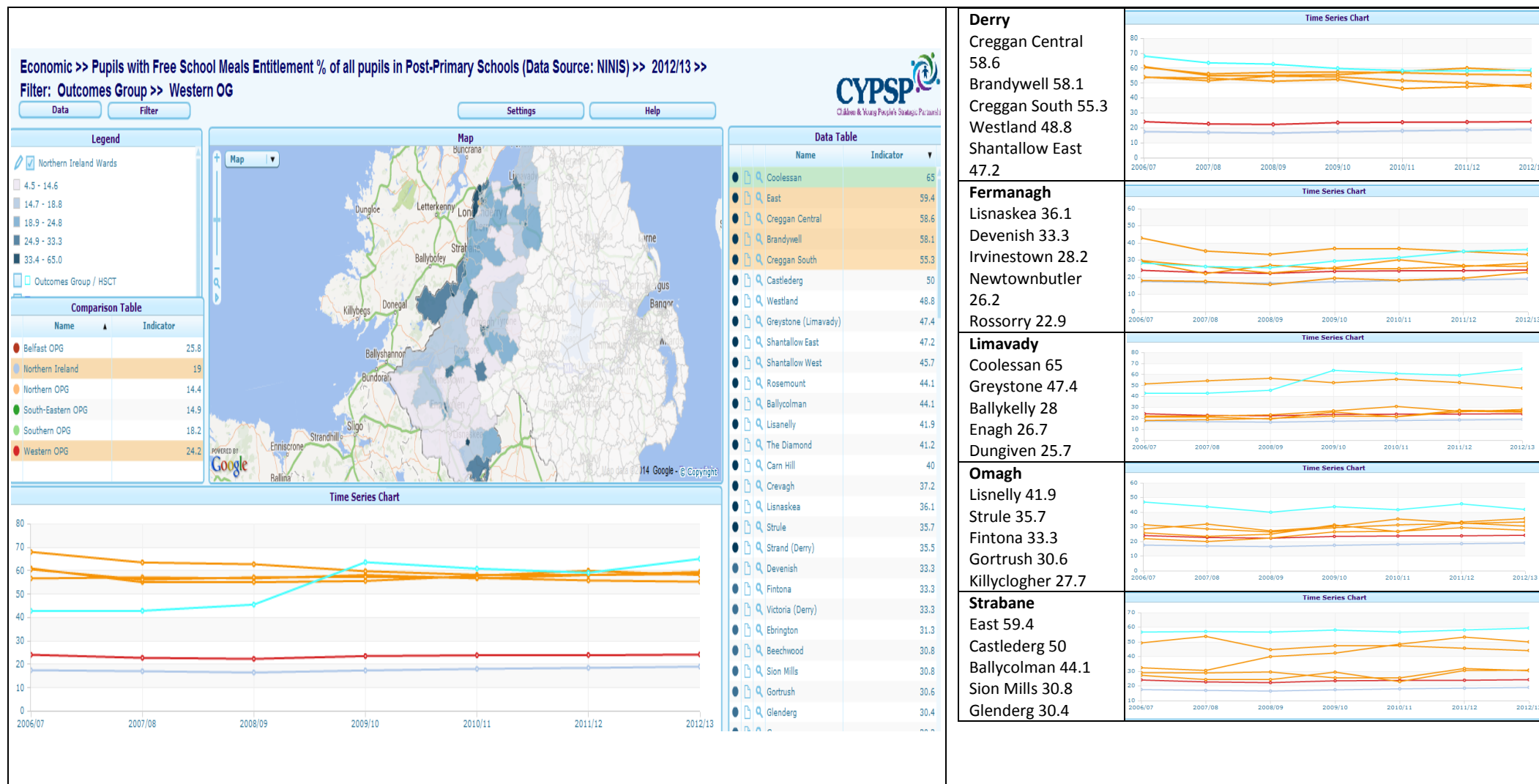
Note: Trend lines should be read in conjunction with the data table i.e. highest as highlighted.

ECONOMIC AND ENVIRONMENTAL WELLBEING



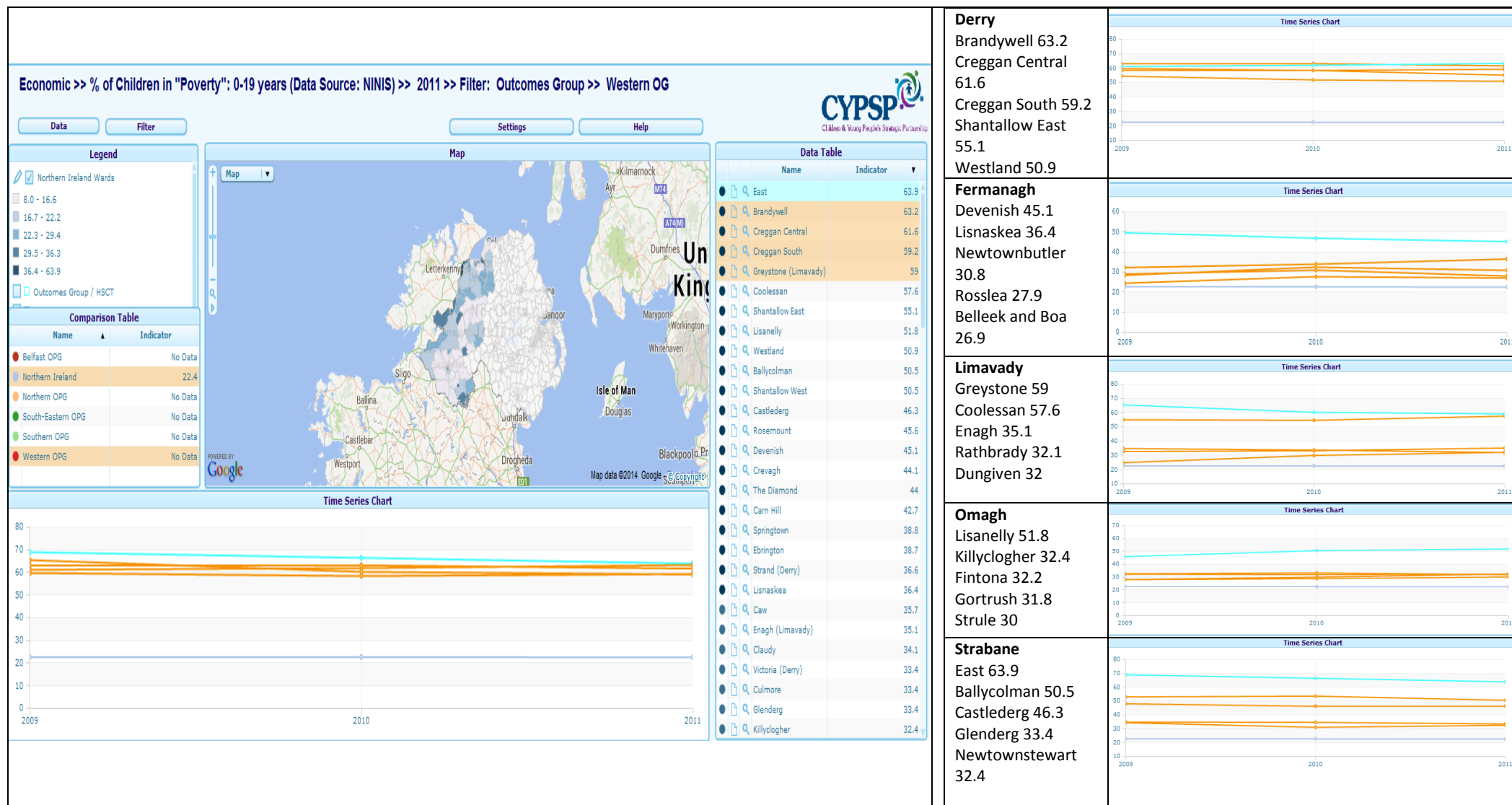
The highest 5 wards are highlighted here for the percentage of primary school pupils with free school meal entitlement with East (Strabane) seeing the highest with 77.4%. The data table shows in descending order the top 20% of wards above the Western Outcomes Group average which is depicted in red on the Time Series Chart. The Northern Ireland average is the pale blue line. All areas are seeing an increase in line with Belfast and NI averages. *Note: Trend lines should be read in conjunction with the data table i.e. highest as highlighted.*

ECONOMIC AND ENVIRONMENTAL WELLBEING



The highest 5 wards are highlighted here for the percentage of post-primary school pupils with free school meal entitlement with Coolessan seeing the highest with 65%. The data table shows in descending order the top 20% of wards above the Western Outcomes Group average which is depicted in red on the Time Series Chart. The Northern Ireland average is the pale blue line. All areas are seeing an increase in line with Western and NI averages. *Note: Trend lines should be read in conjunction with the data table i.e. highest as highlighted.*

ECONOMIC AND ENVIRONMENTAL WELLBEING



The highest 5 wards are highlighted here for the percentage of all Children and Young people living in Poverty with East (Strabane) seeing the highest with 63.9%. The data table shows in descending order the top 20% of wards above the Western Outcomes Group average which is depicted in red on the Time Series Chart. *Note :Trend lines should be read in conjunction with the data table i.e. highest as highlighted.*

Contact Details

For further information on indicators in your area please contact:-

Valerie Maxwell CSP Information Manager Social Care and Children HSCB Tower Hill Armagh 028 37 414602 Valerie.Maxwell@hscni.net	Yvonne Neill CSP Information Officer Social Care and Children HSCB Tower Hill Armagh 028 37 414442 Yvonne.Neill@hscni.net	Shauneen Loughran CSP Information Officer Social Care and Children HSCB Tower Hill Armagh 028 37 414435 Shauneen.Loughran@hscni.net
---	--	---