

Developments in Early Intervention Integrated Initiatives in Northern Ireland



Presented by
Maurice Leeson
Children's Services
Planning Professional
Advisor

Content of Presentation

- **Policy Direction**
- **CYPSP planning and implementation structures**
- **Early Intervention Transformation Programme (EITP)**



Strategic Policy Context -Children's Services Planning Approach

- **The Children (1995 Order) (Amendment) (Children's Services Planning) Order 1998**
 - requires every Health and Social Services Board to prepare and publish plans for the provision of children's services within its area and to keep those plans under review. In preparing or updating its plans, a Health and Social Services Board is required to consult Health and Social Services trusts, education and library boards, district councils, certain voluntary organisations, the Northern Ireland Housing Executive, the Probation Board for Northern Ireland, the police and other relevant bodies. The Department of Health and Social Services may require a Health and Social Services Board's plan to be submitted to it at any time.
- **Promote integrated provision of service and effective use of available resources**
- **Facilitate joint commissioning by agencies when it is seen as appropriate to meet the needs of children**
- **Ensure consistency of approach to planning**



2006 Children's Strategy-Our Children and Young People: Our Pledge

- High Level Outcomes
 - Enjoying Learning and Achieving
 - Experiencing Economic and Environmental Wellbeing
 - Contributing Positively to Community and Society
 - Living in Safety with Stability
 - Healthy
 - Living in a Society that Respects their Rights

“making a gradual shift to preventative and early intervention approaches *without compromising those children and young people who currently need our services most*”



2013 Delivering Social Change (OFMDFM)

- Early intervention
- Integrated delivery

“the need for more joined up planning and commissioning of services. The most persistent problems associated with deprivation and social exclusion cannot be addressed by individual services or even sectors working in isolation”

“Major societal change can not be achieved through a piecemeal approach which relies on many pilot projects but on a sustained adaptation of mainstream services towards those interventions that provide the best results in the medium to long



Policy Themes

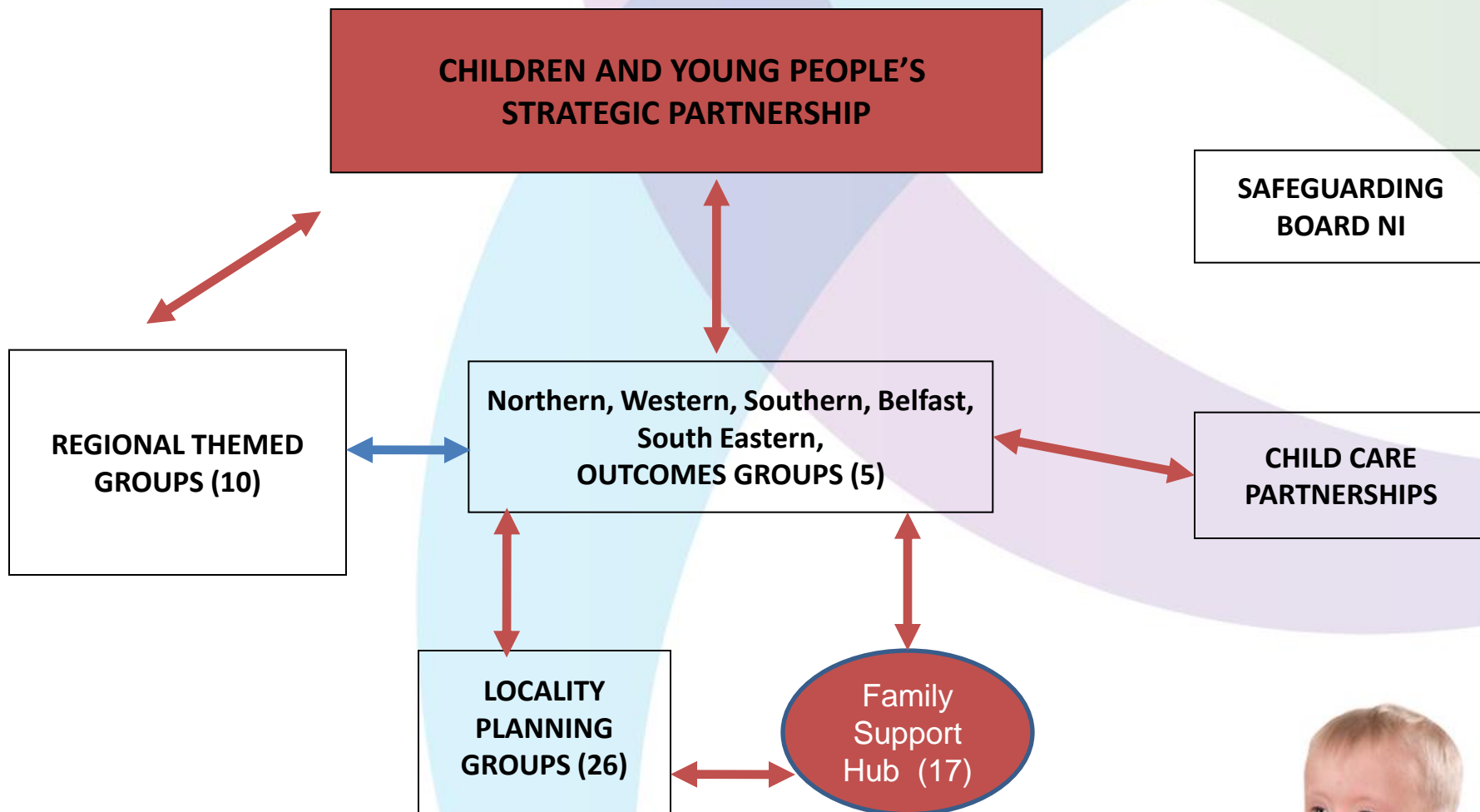
- Consistency in planning
- Work better together-within and across sectors
- Rebalance the system to early intervention
- Change mainstream services

And

- Apply what we know more effectively-implementation
- Transfer learning between and across organisations



CYPSP Structures and Links



The Role of the 10 Regional Subgroups-Outcomes Based Planning for Specific Groups of Children and Young People

- Carry out integrated planning for specific groups of vulnerable children and young people on a regional basis
- Specific emphasis on sharing resources across agencies to improve outcomes for children and young people.
 - BME
 - Children with Disabilities
 - Transitions
 - Domestic and Sexual Violence
 - Children Young People and Offending
 - Think Family
 - LGBT Young People
 - LAC 16+
 - Young Carers
 - Children and Young People with Emotional and Behavioural Difficulties



The Role of the 5 Outcomes Groups

- Carry out integrated Outcomes Based planning and commissioning for children and young people in their area
- Specific emphasis on sharing resources across agencies to improve outcomes for children and young people.
- Key reference point is NI Children's Plan (2011-2014)
- Primary emphasis is early intervention and prevention
- Support the development of Locality Planning and Hub development processes



The Role of the 25 Locality Groups

- Partnership between children/young people/families/communities/representatives of agencies at local level focussing on early intervention
- How can we improve services by working together
- An Outcomes Based locality plan
- Specific emphasis on sharing resources across agencies to improve outcomes for children and young people.
- Framework for Integrated Planning for Outcomes for Children and Families (CAWT)



An Emerging Early Intervention Infrastructure

- Family Support Hubs sign-posting families **to..**
- Other Commissioned local Family Support Services **and...** Statutory Services with an Early Intervention Focus **and..**
- With access to Range of Evidence Based Parenting Programmes (PHA) **and..**
- With access to a new Early Intervention Service



Access to a Network of Support-Family Support Hub

A Family Support Hub is a multi-agency network of statutory, voluntary and community organizations that either provide early intervention services or work with families who need early intervention services. The network accepts referrals of families who need early intervention family support and uses their knowledge of local service providers to signpost families with specific needs to appropriate services



Purpose of Family Support Hubs

- To improve access to early intervention family support services by matching the needs of referred families to family support providers
- To improve coordination of early intervention family support services by creating a collaborative network of providers
- To improve awareness of family support services
- To assess the level of unmet need for early intervention family support services and inform the relevant Outcomes Group



Early Intervention Transformation Programme

- The coming together of six Government Departments and private philanthropy, as part of the Delivering Social Change initiative, to jointly fund a programme of early intervention
- The programme will seek to:
 1. **equip all parents with the skills needed to give their child the best start in life**
 2. **support families when problems first emerge, out-with the statutory system**
 3. **positively addressing the impact of adversity on children by intervening both earlier & more effectively to reduce the risk of poor outcomes later in life**



Focus of Early Intervention Transformation Programme

1. Working together / pulling resources to focus on prevention and earlier intervention
2. Achieving transformational change by:
 - doing things differently to achieve different outcomes – which may require brave decisions to stop doing some things to invest in other interventions which are more effective.
 - Using evidence more effectively
3. Using data and outcome indicators to both drive improvement & demonstrate change



EITP Work Stream 1

- A Universal Offer
- Focus on resilience building
- Three delivery components:
 - Getting Ready for Baby
 - Getting Ready for Toddler
 - Getting Ready to Learn



EITP Work Stream 2

- Inevitably, despite supporting all parents to give their child the best start in life, some families will need extra support to prevent early problems getting worse.
- Core components
 - Family Support Hubs
 - PHA Parenting Programmes
 - Early Intervention Service



EITP Work Stream 3

- positively addressing the impact of adversity on children by intervening both earlier & more effectively to reduce the risk of poor outcomes later in life
- There will always be a small number of families who regardless of the support and help offered, are unable or unwilling to provide the care, safety and protection that children need. This strand of work will support new approaches within mainstream services to intervene earlier and more effectively to enable children in these families to be cared for safely and appropriately and helped to grow into confident, well-adjusted adults who can fulfil their potential within society



How will we know if we have been successful?

EITP Performance Model using the CYPSP information system-

- supporting the process through the information system
<http://www.cypsp.org/maps-demographic.html>
- Tracking indicators over time 'turning the curve'
outcome monitoring reports
<http://www.cypsp.org/publications.htm>
- Qualitative Information
- Service Performance Measures-Evaluation toolkit developed by CYPSP early Intervention Subgroup





NEWS & EVENTS

22 May 2010

New government guidelines for child services coming soon...

18 May 2010

SureStart Summer Scheme Initiative gaining momentum...

[More News & Events](#)

Family Support Services Directory

Welcome to the Northern Ireland Family Support Services Directory.

This directory provides details of a wide range of services offering support to families across Northern Ireland.

It brings together comprehensive and up-to-date information about services for children, young people, their parents and carers.



SEARCH DATABASE

Choose a service



OR

Keyword Search

Select district council



SEARCH

A - Z SERVICE DIRECTORY

[A](#) [B](#) [C](#) [D](#) [E](#) [F](#) [G](#) [H](#) [I](#) [J](#) [K](#) [L](#) [M](#) [N](#) [O](#) [P](#) [Q](#) [R](#) [S](#) [T](#) [U](#) [V](#) [W](#) [X](#) [Y](#) [Z](#)

Telephone Helpdesk

Talk to us now for help & advice...



Challenging Behaviour Courses

Click here to register...



Training Courses..



SureStart Summer Schemes

Find out what's going on in your area...

SureStart



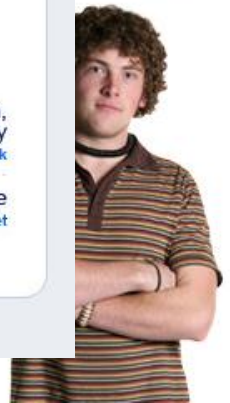
Site Safe

All organisations in this directory have declared to HSCB that they have clear policy and procedures for Safeguarding children.

Get included in the Directory!

Department of Health,
Social Services and Public Safety
www.dhaspani.gov.uk

Health and Social Care
www.hscni.net



Challenges

- Number of early intervention initiatives –challenge of joining it all together both strategically and operationally.
- Clear implementation challenge. How do we merge the new programmes within existing structures
- Statutory services cannot sustain every programme/initiative currently being developed
- Capturing and sharing learning
- Making effective links across early intervention and to services at higher levels of need
- Sustainability and transformational change
- Reaching out beyond social services to engage other statutory agencies in this work

