

Children and Young Peoples Strategic Partnership Outcomes Based Planning Presentation



Presented by
Valerie Maxwell
Children's Services Planning
Information Manager

Content of Presentation

- What is the CYPSP
- Strategic Policy Context and how we got to where we are
- How we support Outcomes Based Planning
- How we know if we are being successful



Children and Young People's Strategic Partnership – being joined up at the Point of Delivery

The first and only partnership which brings together the leaders of agencies across the whole of Northern Ireland to focus on every aspect of the lives of all our children and young people.

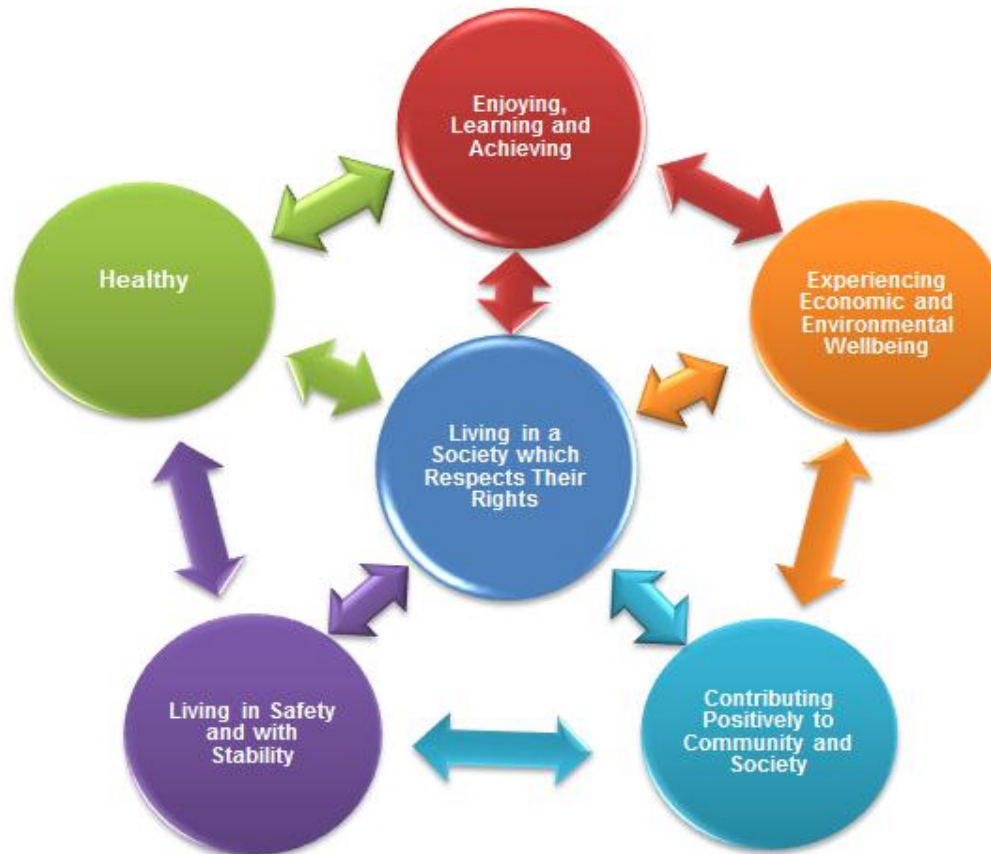
To put in place integrated planning and commissioning across agencies and sectors, which is recorded through the Children and Young People's Plan (2011-14), aimed at improving wellbeing and the realisation of rights of children in Northern Ireland, in relation to the six outcomes for children.



Strategic Policy Context

NI Children's Strategy-Our Children and Young People: Our Pledge 2006-2016

- High Level Outcomes



Statutory Basis for this Approach

The Children (1995 Order) (Amendment) (Children's Services Planning) Order 1998

- requires every Health and Social Services Board to prepare and publish plans for the provision of children's services within its area and to keep those plans under review. In preparing or updating its plans, a Health and Social Services Board is required to consult Health and Social Services trusts, education and library boards, district councils, certain voluntary organisations, the Northern Ireland Housing Executive, the Probation Board for Northern Ireland, the police and other relevant bodies. The Department of Health and Social Services may require a Health and Social Services Board's plan to be submitted to it at any time.



Children's Services Planning Guidance 1998 (DHSS/DENI/NIO)

Aims of Children's Services Planning

- Promote the welfare of Children
- Clarify strategic objectives in relation to services
- Promote integrated provision of service and effective use of available resources
- Ensure consistency of approach to planning
- Promote high standard of coordination and collaboration between *HSCB and Trusts* and between social care and health services
- Establish a high standard of coordination and collaboration between *HSCB and Trusts* and other agencies and organisations which have a contribution to make to effective provision of local services
- Facilitate joint commissioning by agencies when it is seen as appropriate to meet the needs of children



Strategic Policy Context-Delivering Social Change (OFMDFM)

- Early intervention
- Integrated delivery

“the need for more joined up planning and commissioning of services. The most persistent problems associated with deprivation and social exclusion cannot be addressed by individual services or even sectors working in isolation”

“Major societal change can not be achieved through a piecemeal approach which relies on many pilot projects but on a sustained adaptation of mainstream services towards those interventions that provide the best results in the medium to long



Governance

- Statutory responsibility with HSCB to produce the plan
- Voluntary agreement amongst agencies to work collaboratively
- Structures for delivery are not set out in legislation but agreed with partners
- Consistent with NI Government policy direction



Evolution of Children's Services Planning Process

- Initially 4 Children and Young Peoples Committee. One based in each of the four Board Areas (1999)
- First Children's Services Plan was 1999-2002
- Administrative reform created one Health and Social Care Board (HSCB) for Northern Ireland (2007)
- Creation of one committee CYPSP to replace the four Children and Young Peoples Committees (2011)
- Northern Ireland Children and Young Peoples Plan 2011-2014



Development of Outcomes Based Planning in Northern Ireland

- In 2004 CSP link with Vermont and Con Hogan
- 2004 Children's Services Planning adopts the Outcomes Based Planning Model
- CAWT Outcomes for Children Project 'implementation of an outcome approach to planning'. Development of Framework for Outcomes Based Planning produced and implemented in Northern Ireland to CSP and ROI Children Services Committees
- CiNI training programme on Outcomes in partnership with HSCB



Transition to CYPSP

- Had not been a central coordination point in previous process
- Bringing regional consistency to the planning process
- Experience of previous process was that much of the change needed was systemic and could only be driven at a regional level
- Planning process structure and membership should reflect the fact that the High level outcomes belonged to all Departments and needed to be inclusive of all sectors
- Deliberate decision to engage the statutory organisations at the most senior level to drive change and engagement with children's agenda
- A more local focus was still needed-5 Outcomes Groups at Health and Social Care Trust chaired by Director of Children's Services
- Commitment to embedding outcomes based planning throughout the process



CYPSP

What's different about CYPSP approach?

- From a multiple organisational focus on differentiated aspects of children's lives - to a partnership focus on the whole of children's lives
- Inclusive of perspectives of all sectors – voluntary, community and statutory
- Collaboration-core idea that no organisation has the solution to the complex problems, such as child poverty, many families face today
- Bringing together the leaders of organisations who can make change happen
- Use of Outcomes Based Planning and Child Rights approach

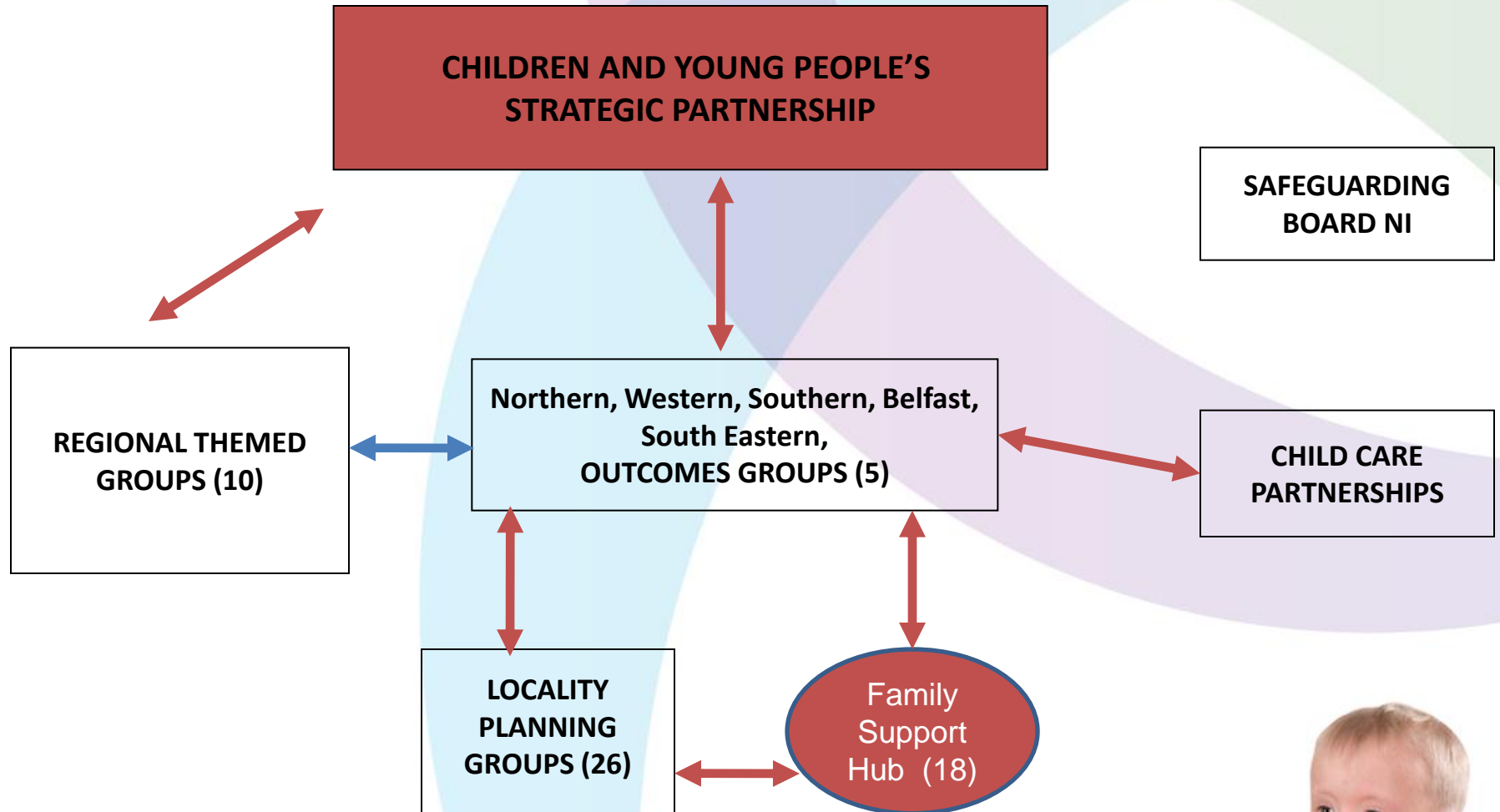


Integrated Outcomes Based Planning

- Planning groups, both regional and local, finding out how well children and young people in their area or group are doing against the High level Outcomes. The planning groups are looking at
 - Statistical information
 - The experience of children and young people and families
 - The practice knowledge of front line staff
 - What research tells us
 - Information from Family Support Hubs
- They are also looking at what supports and services exist at the moment, that they can work out what needs to be changed, especially how such supports and services should be coordinated, to improve children's outcomes.



CYPSP Structures and Links



CYPSP Integrated Planning Outcomes Framework

- High level Outcome
- Outcome sought by group
- How are things now for Children/young people
- What we plan to do to improve the situation
- How will we do this
- Who can help
- What works
- How will we know if we have been successful
- Who will take the lead



The Role of the 5 Outcomes Groups

- Carry out integrated Outcomes Based planning and commissioning for children and young people in their area
- Specific emphasis on sharing resources across agencies to improve outcomes for children and young people.
- Key reference point is NI Children's Plan (2011-2014)
- Primary emphasis is early intervention and prevention
- Support the development of Locality Planning and Hub development processes



The Role of the 10 Regional Subgroups-Outcomes Based Planning for Specific Groups of Children and Young People

- Carry out integrated planning and commissioning for specific groups of vulnerable children and young people on a regional basis
- Specific emphasis on sharing resources across agencies to improve outcomes for children and young people.
 - BME
 - Children with Disabilities
 - Transitions
 - Domestic and Sexual Violence
 - Children Young People and Offending
 - Think Family
 - LGBT Young People
 - LAC 16+
 - Young Carers
 - Children and Young People with Emotional and Behavioural Difficulties



The Role of the 25 Locality Groups

- Be a partnership between children and young people, families, communities and representatives of agencies at locality level at a geography that makes sense to the local community
- Listen to local children and young people, their parents and local communities
- Draw up a locality plan to address priorities identified through outcomes based planning and mobilise local resources from the statutory, voluntary and community sectors to address these priorities.
- Build on the strengths of families and local communities
- Build on existing social partnerships
- Provide a needs led range of leisure, social, health, educational and housing services in locally agreed and accessible locations.



Co-ordinating Early Intervention-Family Support Hubs

- A Family Support Hub is a multi-agency network of statutory, voluntary and community organisations that either provide early intervention services or work with families who need early intervention services. The network accepts referrals of families who need early intervention family support and use their knowledge of local service providers to signpost families with specific needs to appropriate services
- Focused on
 - Children/young people/families who do not meet the criteria for statutory social services
 - Children/young people/families exiting statutory social services who continue to require support



Purpose of Hubs

- To improve access to early intervention family support services by matching the needs of referred families to family support providers
- To improve coordination of early intervention family support services by creating a collaborative network of providers
- To improve awareness of family support services
- To assess the level of unmet need for early intervention family support services and inform the relevant Outcomes Group



Progress to date on Family Support Hubs

- 18 Hubs in operation with a further 7 planned
- Using 10 standards to quality assure the family support practice of Hubs
- Developed a single monitoring tool for collecting data to demonstrate the effectiveness of Hubs
- Building the evidence base for early intervention services and looking at approaches to evaluation to support this



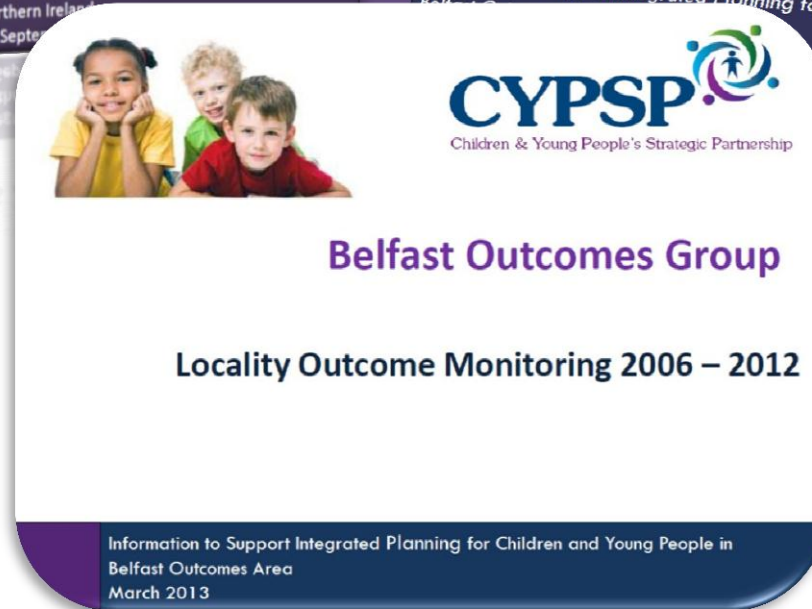
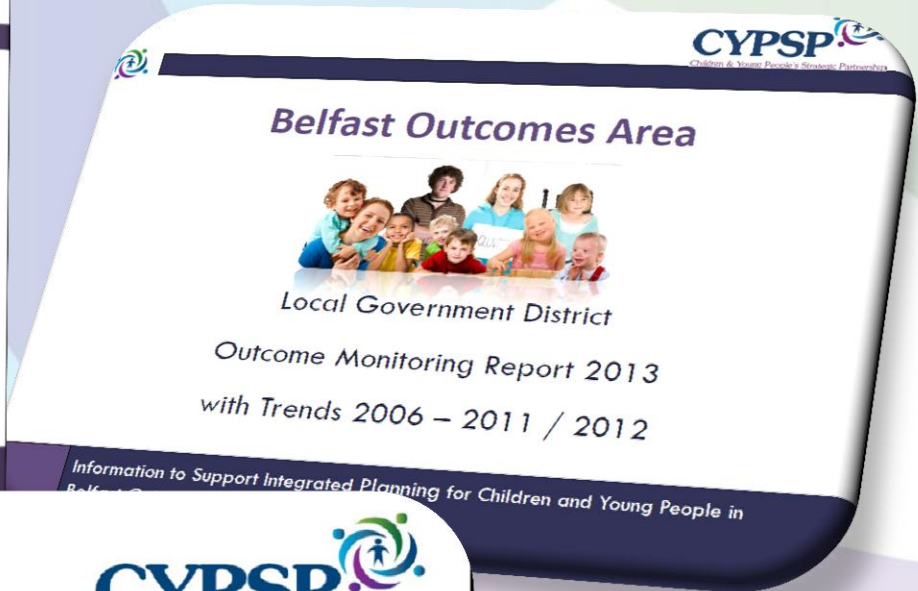
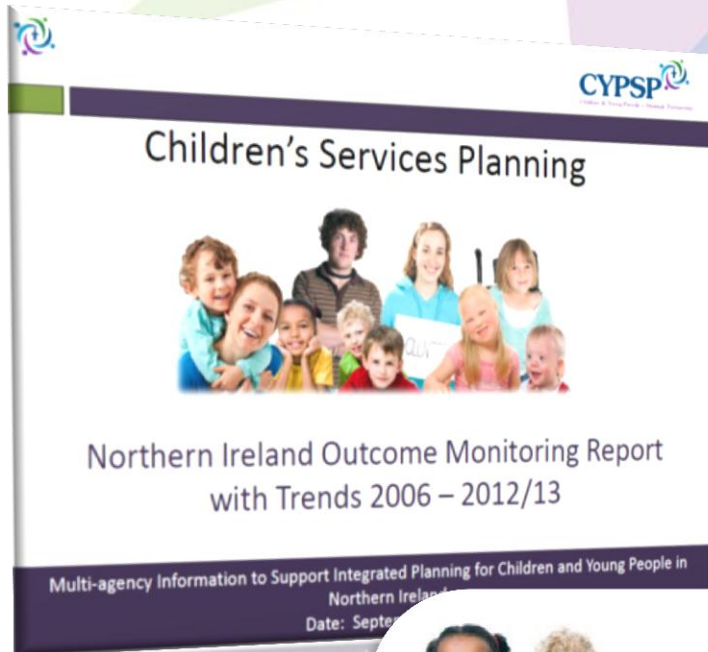
How will we know if we have been successful?

CYPSP information system-

- Tracking indicators over time **‘turning the curve’** outcome monitoring reports <http://www.cypsp.org/publications.htm>
- Supporting the process through the CYPSP mapping system <http://www.cypsp.org/maps-demographic.html>
- Qualitative Information
- Service Performance Measures-Evaluation toolkit developed by CYPSP early Intervention Subgroup



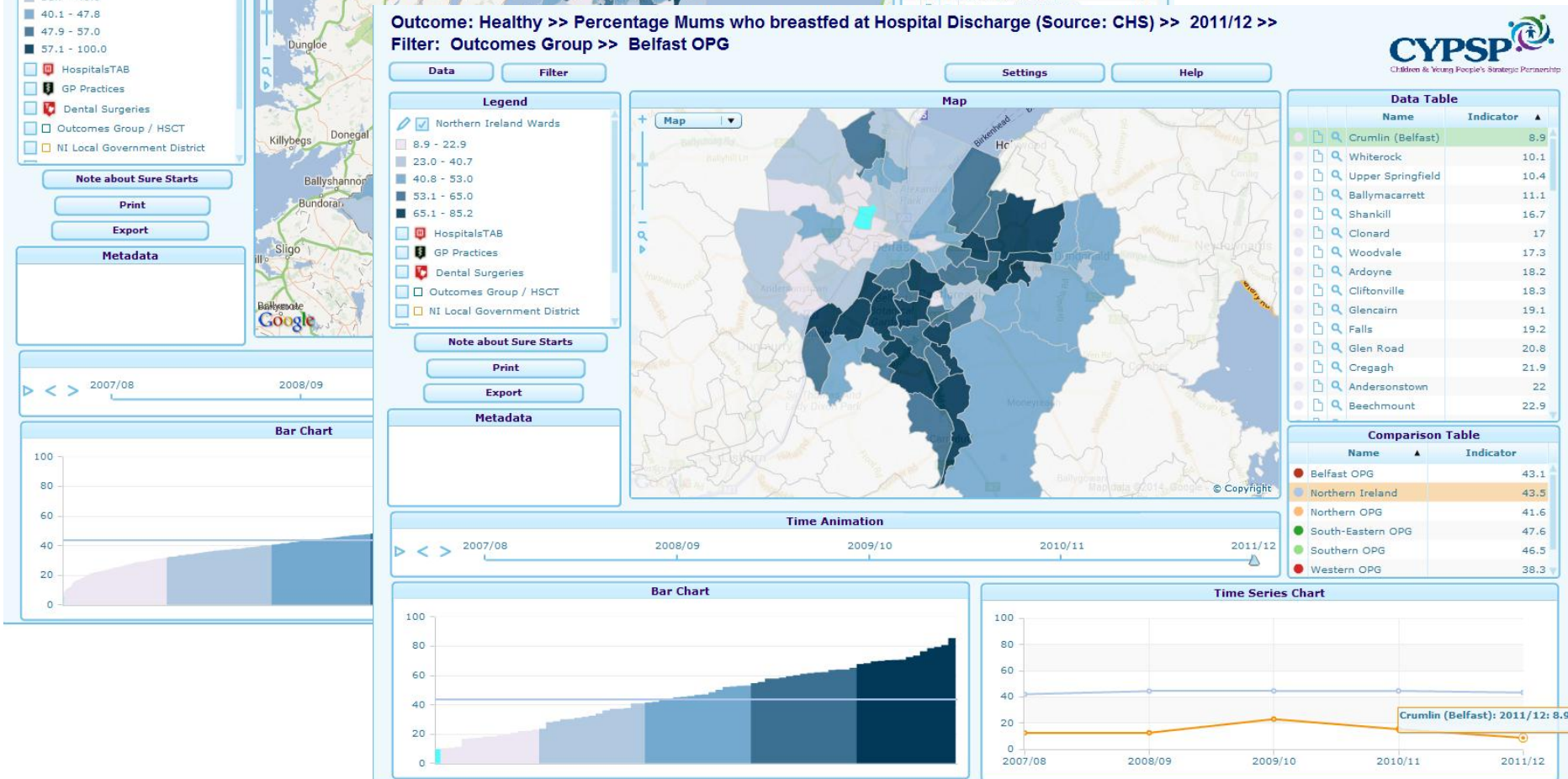
Multi Agency Integrated Outcome Monitoring Information



Outcome: Healthy >> Percentage Mums who breastfed at Hospital Discharge (Source: CHS) >> 2011/12

The screenshot displays the CYPSP web application interface. At the top, the title bar reads "Outcome: Healthy >> Percentage Mums who breastfed at Hospital Discharge (Source: CHS) >> 2011/12". Below the title bar are three tabs: "Data", "Filter", and "Settings". The "Data" tab is selected. The main content area is divided into three sections. On the left is a "Legend" section with a checked box for "Northern Ireland Wards" and two color-coded ranges: "5.3 - 31.6" (light blue) and "31.7 - 40.0" (dark blue). In the center is a "Map" section showing a map of Northern Ireland with various wards labeled, including Carrington, Portrush, Buncrana, Portstewart, and Newcastle. On the right is a "Data Table" section with two columns: "Name" and "Indicator". The table contains two rows of data: "Coolassan" with an indicator of 5.3, and "Crumlin (Belfast)" with an indicator of 8.9.

Name	Indicator
Coolassan	5.3
Crumlin (Belfast)	8.9



Area Performance Profiles

Outcome: Healthy >> Percentage Mums smoking >> 2012 >> Filter: Locality Planning
Group >> Armagh City LPG

Data

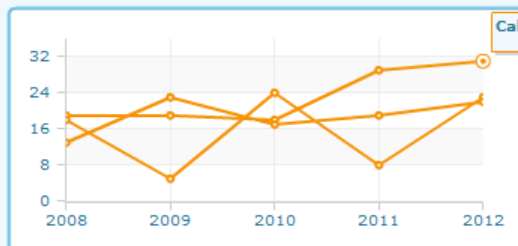
Filter

Time

Table

Help

	Name	Indicator	
●	Callan Bridge	31	
●	Abbey Park	23	
●	Keady	22	
●	The Mall	18	
●	Observatory	18	
●	Demesne	14	
●	Downs	14	
●	Rich Hill	13	
●	Poyntz Pass	9	
●	Carrigatuke	9	
●	Markethill	8	
●	Tandragee	8	
●	Laurelvale	8	
●	Hockley	6	
●	Hamiltonsbawn	6	
●	Ballymartrim	6	



- ☒ NI Wards
- 2.0 - 5.6
 - 5.7 - 6.4
 - 6.5 - 9.0
 - 9.1 - 18.0
 - 18.1 - 31.0
- ☐ Background Mapping

Indicator	Baseline 2006	Value 2012	NI Avg	Trend	Performance
Outcome: Healthy					
Percentage Mums smoking	19	31 ●	16	↓	0 100
	18	23 ●	16	↓	0 100
	13	22 ●	16	↓	0 100
Percentage Mums who breastfed at Hospi	43	55.07 ●	43.5	↓	
	33	44.74 ●	43.5	↓	
	26	26.09 ●	43.5	↑	
Children with a Disability in receipt of DL	25	52.56 ●	39.2	↓	
	46	52.82 ●	39.2	↓	
	32	50 ●	39.2	↓	
Indicator 2	19	31.48 ●	16	↓	0 100
	18	22.5 ●	16	↓	0 100
	13	22.22 ●	16	↓	0 100
Indicator 2	19	31.48 ●	16	↓	0 100
	18	22.5 ●	16	↓	0 100
	13	22.22 ●	16	↓	0 100
Indicator 2	19	31.48 ●	16	↓	0 100
	18	22.5 ●	16	↓	0 100
	13	22.22 ●	16	↓	0 100
Indicator 2	19	31.48 ●	16	↓	0 100
	18	22.5 ●	16	↓	0 100
	13	22.22 ●	16	↓	0 100
Indicator 2	19	31.48 ●	16	↓	0 100
	18	22.5 ●	16	↓	0 100
	13	22.22 ●	16	↓	0 100
Indicator 2	19	31.48 ●	16	↓	0 100
	18	22.5 ●	16	↓	0 100
	13	22.22 ●	16	↓	0 100

Callan Bridge

Callan Bridge Abbey Park Keady

Poor ↓ Moderately poor ↓ No change — Moderately good ↑ Good ↑ A ● B ● C ●

Target |

Poor Medium Good

— +

Family Support NI Website

Welcome to the Family Support NI Website. This site provides details of a wide range of services provided by statutory, voluntary and community organisations.

You can access up-to-date information on a range of services available to support families. This information will help Families, Young People, Children and Practitioners in Northern Ireland to find local services to meet their needs.

Search Family Support Services

[Choose a Service](#)
[Keyword Search](#)
[Postcode Search](#)
[Any Distance](#)
[All of N Ireland](#)
[Search](#)

Search Childcare Services

[Type of Provider](#)
[Keyword Search](#)
[Postcode Search](#)
[Any Distance](#)
[All of N Ireland](#)
[Search](#)

- ☐ Vacancies
 ☐ Experience of Disability/Complex Needs
 ☐ School Pick Up/Drop Off
 ☐ Willing to accept Childcare Vouchers
 ☐ Flexible Working Hours
 ☐ Pre-School Funded Places

A-Z Search allows you to view all services in alphabetical order.

[A](#)
[B](#)
[C](#)
[D](#)
[E](#)
[F](#)
[G](#)
[H](#)
[I](#)
[J](#)
[K](#)
[L](#)
[M](#)
[N](#)
[O](#)
[P](#)
[Q](#)
[R](#)
[S](#)
[T](#)
[U](#)
[V](#)
[W](#)
[X](#)
[Y](#)
[Z](#)
<#>

Lifeline


808 808 8000

Guidance on Good Practice
for Safeguarding Children



NSPCC Child Exploitation
Helpline

**NSPCC
helpline:**
**0800 389
1701**



Worried about the welfare of
a child?



Er



Site safe


All organisations on this website have declared to the Health and Social Care Board (HSCB) that they have clear policy and procedures for safeguarding children.

[Get included!](#)


**Health and Social
Care Board**


DHSSPS
Department of Health, Social Services
and Public Safety




**Northern Ireland
Executive**
www.northernireland.gov.uk

Website WWW.CYPSP.ORG



Get Involved

- Follow us on twitter CYPSP Northern Ireland (@cypsp)
- Subscribe to our e-zine contact stephanie.thompson@hscni.net
- Use our website www.cypsp.org

