



Think Family NI

‘Changing the culture of thinking and practice within adult mental health and children’s services in Northern Ireland’

QUB Symposium
16th May 2016

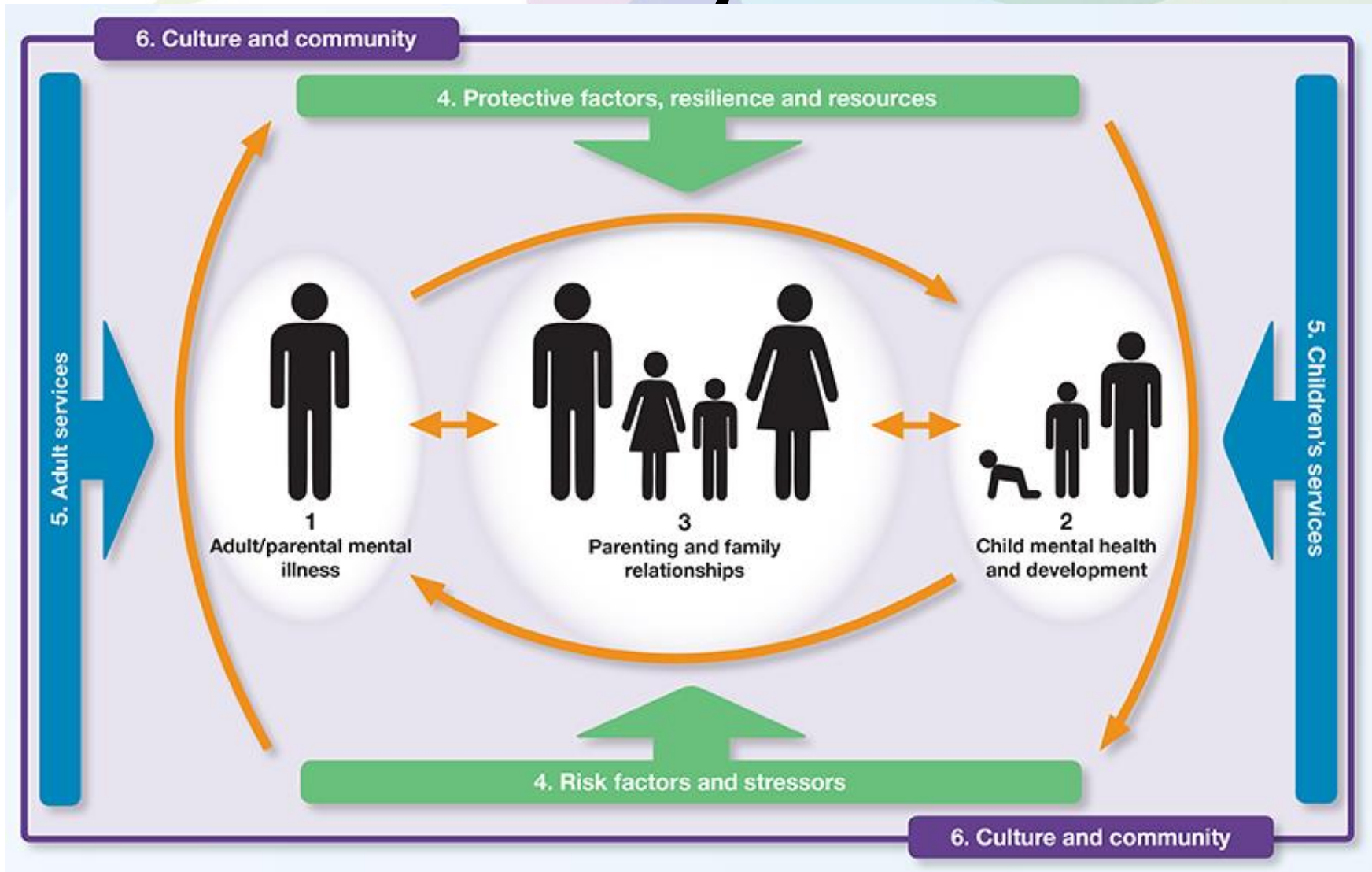
Background/Context

- ❖ O'Neill Inquiry
- ❖ Think Family Pilot 2009-2012
- ❖ Social Care Institute of Excellence (SCIE) Guidance

Aim

- ❖ **Better understanding of mental health and children's roles and responsibilities**
- ❖ **Improve practice through enhanced collaborative working**
- ❖ **Introduction of Family Model**

The Family Model



Key elements – Changing culture and practice

- ❖ Mindsets
- ❖ Harness what is already out there
- ❖ Service User & Carer Involvement
- ❖ Support to change practice
 - Organisational level
 - Managerial level
 - Practitioner level

Challenges

- ❖ Competing demands & priorities
- ❖ Capacity to deliver
- ❖ Changing Mindsets

Phase 2-Think Family NI - 2013

