

Family Support Hubs NI Bi-Monthly Newsletter

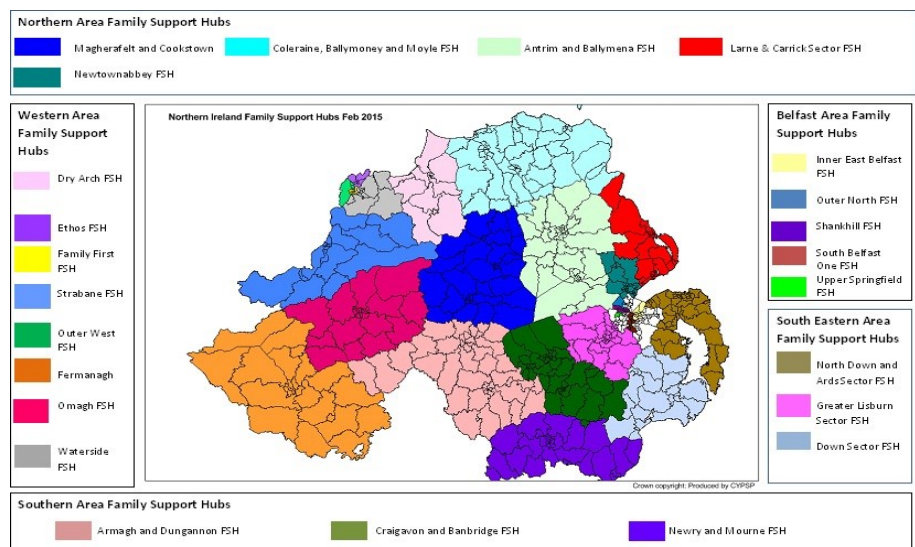
This edition includes:

- Family Fund NI
- Autism NI Awareness Training
- Summer Childcare
- Summer Survival Guide for Families
- Action for Deaf
- Sense
- Women's Aid Impact Statement



Introduction

This is the fifth edition of the Family Support Hubs Bi-monthly newsletter to raise awareness of services available for Hub referrals in Northern Ireland. From 2016 there are a total of 29 family support hubs. This newsletter will keep you up to date with opportunities and new services available to families in need of support.



What is it? A grant request for; furniture, clothing, kitchen appliances, sensory toys, computers, family breaks, or support with college for 16 and 17 year olds.

Who is eligible? Families in the UK raising a disabled or seriously ill child or young person aged 17 or under.

How to apply? www.familyfund.org.uk/FAQs/how-do-we-apply

This is how we help

"My son has attention deficit hyperactivity disorder and I needed something to keep his attention. I was delighted when the Fund paid for his tennis lessons, they have been invaluable in helping him to let off steam."

"Because of my child's condition I couldn't get any nappies that fit correctly and was having to change her clothing four times a day. When I was told about the Family Fund, a grant for specialist clothing was awarded which enabled me to have nappies made that would fit."

"The Family Fund stepped in to help our family at a crucial time. We lost everything in a fire, the Fund helped with a table and chairs and clothing. I just don't know what we would have done without their help at this very tragic time in our lives."



Sense, the National Deafblind and Rubella Association, has secured five year Big Lottery funding for **Touching Lives - Transforming Families**. This five-year project is providing a range of support to families across Northern Ireland with a child aged 12 or under where the child or a parent is affected by a deafblind or multi-sensory impairment.

Contact us:

nienquiries@sense.org.uk or 028 9083 3430



Action Deaf Youth has secured five year Big Lottery funding for their **Active Play Project**. The project will helping families across Northern Ireland with a deaf child up to the age of eight to improve their communication skills and relationships through specialist play.

Contact us:

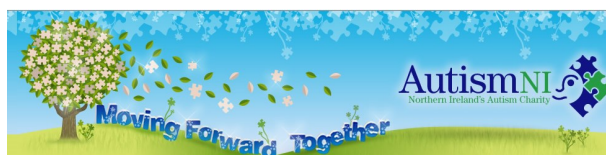
michael.johnston@actiondeafyouth.org
or 028 9099 2779



RNIB in partnership with **Angel Eyes NI** have developed a summer programme of activities for people with sight loss in Northern Ireland from July-September 2016. Activities include; family sailing, digital music summer scheme, pottery project, girls pamper days and family trips to the zoo. Download the full programme at www.cypsp.org > news and events

Contact us: Charlene or Roisin at 028 9033 4117 or 028 9033 4122

Autism NI Awareness Training



Autism NI is Northern Ireland's longest serving Autism charity and Autism Training provider. We train over 1860 parents, carers and professionals a year. We provide training courses that cover a range of topics relating to Autism,

- Fundamentals of Autism – Parents & Professionals
- 2-day Growing Up, Health Awareness & ASD – Parents
- Skills for Staying Safe – Individuals with ASD
- Impact Award (Equality based training to increase Autism Accessibility) - Professionals
- Social Skills – Parents and Professionals

Contact Us:

Autism NI Training Department on 02890 401729 option 2 or email christine@autismni.org. Alternatively, see our website for more information: www.autismni.org.

Funded Summer Childcare

Employers For Childcare have received funding to provide childcare to 20 families across Belfast in July & August 2016. This is for families at tier 2 who have a child with a disability aged between 4-12 years old. Each family will receive 30 hours of home based childcare which would be provided in one block week.

Families can access this service through self-referral or a referring agency.

We also offer a Family Benefits Advice Service where our advisors work with parents to make them aware of the potential support available. They offer one-to-one confidential benefits advice and information on tax credits, social security benefits, maternity/paternity leave and pay and flexible working.



Please don't hesitate to get in touch if you have any questions or wish to discuss a possible family.

Contact us: 028 9267 8200 or email Natalie.McConnell@employersforchildcare.org

Summer Survival Guide for Families



This summer Care for the Family are offering a **free** weekly email service for parents to help them survive the summer. Perhaps you could circulate it to all members to share with their contacts. This again is a free service and supports parents without them having to leave home.



The guide will be in the form of 6 weekly emails to sign up for. It will provide ideas and inspiration to help parents avoid a stressful summer and help make it more memorable. It will contain articles, videos and tips – suitable for parents right up to teenagers and emails begin on 27 June for NI parents. **Contact us:** 028 926 280 50

Sign up today at: www.careforthefamily.org.uk/family-life/parent-support/summer-holiday-survival-guide-for-mums-and-dads

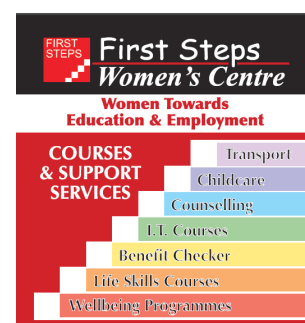
Education and Employment Programmes

First Steps Women's Centre have a range of education and employment programmes beginning in September 2016 for individuals across Northern Ireland to join.

Join us for our open days on 9 and 11 August 2016

Please note: individuals must be unemployed or working less than 16 hours per week.

Contact us: 0288771 7648 or fswc.enquiries@gmail.com





Healthy relationships form the heart of a thriving society!

Relate NI is the leading relationship and family support organisation in Northern Ireland.

RELATIONSHIP & FAMILY COUNSELLING

Relationship counselling is available for couples, families and individuals.

Maintaining a fulfilling relationship is not easy. It requires effort and everyone experiences the challenges and pressures caused by a variety of issues and circumstances, which are normal and perfectly natural.

FAMILY COUNSELLING

Family counselling is largely preventative work, dealing with life issues before become more serious problems requiring specialist interventions. We will work with family members; any group of people who describe themselves as a family; parents; children or adults; extended family members, grandparents, aunts, uncles etc. blended families.

FAMILY SUPPORT HUBS

Relate NI are a partner of the family support hubs. Relate provide relationship counselling support to parent (s) with children aged under 18 years which can also be accessed without charge by all Family Support Hubs across Northern Ireland.

Contact Us:

www.relateni.org, call us on 028 90323454 email us at office@relateni.org



Employers For Childcare offer a range of services to support parents across Northern Ireland including a Family Benefits Advice Service, flexible childcare options, a salary sacrifice Childcare Voucher scheme, workshops and events for parents covering topics that are important to you. Our Family Benefits Advisors can provide free, impartial and confidential information and advice to parents to maximise your income and inform you of your rights & entitlements, including tax credits, Childcare Vouchers, maternity/paternity leave and pay, and flexible working. We can complete 'better off' calculations and benefit entitlement checks to assess entitlement to financial support and provide information on local childcare provision.

We also offer a salary sacrifice Childcare Voucher scheme to help you with meeting the costs of childcare. The amount of salary sacrificed is exempt from tax and National Insurance Contributions, which saves parents £77 each month. In addition to potential savings of £933 per year, Childcare Vouchers are available to both mums and dads, meaning savings can be doubled to over £1,800!

Contact us:

hello@employersforchildcare.org, call Freephone 0800 028 3008 or visit our website at www.employersforchildcare.org

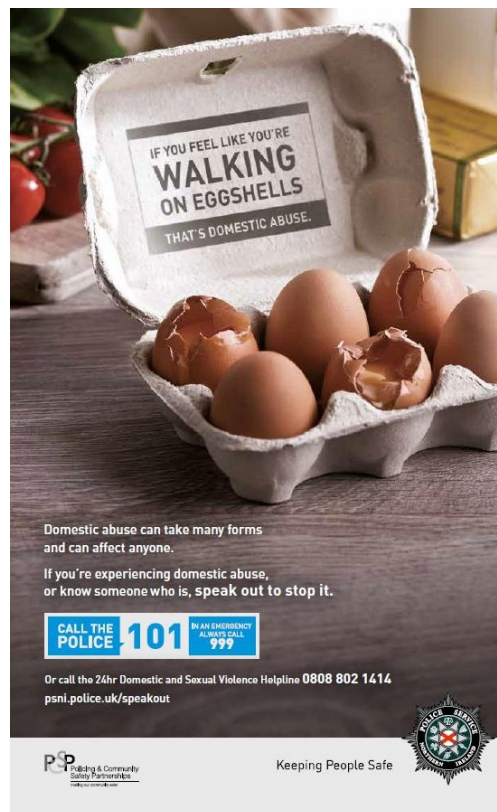
women's aid

Federation Northern Ireland



Women's Aid : IMPACT STATEMENT

Women's Aid is committed to the continuous improvement and development of children and young people's services and has produced a five-year strategy Our Place - Safe Space (2012 – 2017). To date a total of **824 teachers** representing **435 schools** (50% of primary schools across NI) have been trained in personal safety in education settings via the **Helping Hands programme**. Read more on the CYPSP website under news and event.



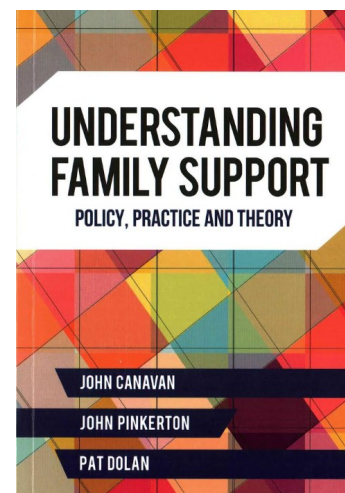
SCIE Understanding Family Support

John Canavan, John Pinkerton and Pat Dolan shared the new Understanding Family Support book this month at an event held in Girdwood Community Hub on 29 June 2016. The book offers a series of reflective practice questions applicable to: legislation, policy, management and planning, direct work with children and families, research and evaluation.

SCIE Review Report - <http://tinyurl.com/j82yjn>

Understanding Family Support Book -

www.amazon.co.uk/Understanding-Family-Support-Policy-



If you would like to find out more about family support services in your area please see the Family Support NI

For further information on Family Support Hubs in your area?

Contact: Helen Dunn, Regional Coordinator of Family Support Hubs

Email: Helen.dunn@hscni.net