

Criteria for referral



Expectant parent or parent with child under 3 years old?



Living in the Greater Belfast Area or making use of the Royal Jubilee Maternity or Mater Maternity units?



Are you a mum or dad with a mild to moderate learning difficulty/disability or with an Autistic Spectrum Condition?



For more information on our Family Service, call:
028 9023 2139



Or contact the team via Family Service Coordinator
Email: families@nowgroup.org
Mob: 077 1071 4275
Twitter: @NOW_families

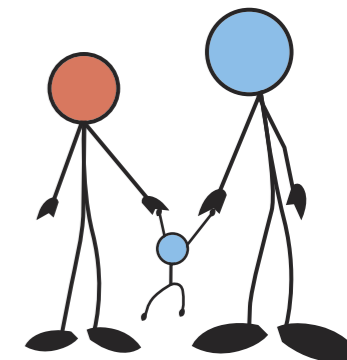
We're a social enterprise that supports people with barriers to employment and learning into jobs with a future.

#buysocial

- @NOW_Group
- nowgrouporg
- www.nowgroup.org



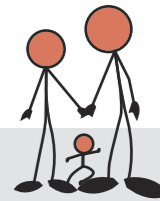
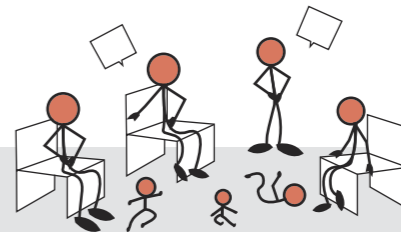
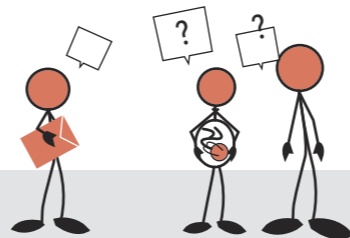
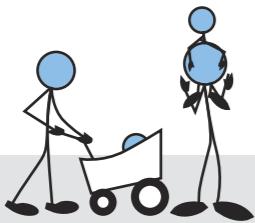
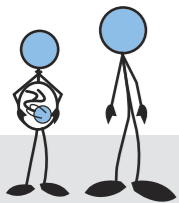
Joining you at the start of your family journey



SEARCH: nowgroup.org

Who does our Family Service work for?

Share, connect, learn and build confidence



Expectant parent/s

New parent/s

Extended family

Support work

Groups

Family planning

All referrals will be assessed for suitability.
Those accepted will have a service tailor made to their needs.

One to One practical support including attending appointments.

Signposting to relevant services including NOW Group's Employment and Training Services and external community services.

Developing group, peer or community support for the client and their extended family.

Access to relationship and family planning workshops.