

# **South Eastern Outcomes Group Stakeholder Engagement Event**

**31 May 2017**

**The Great Hall, Downpatrick**



# Welcome

Fionnuala McAndrew

Director for Social Care and Children,  
Health and Social Care Board

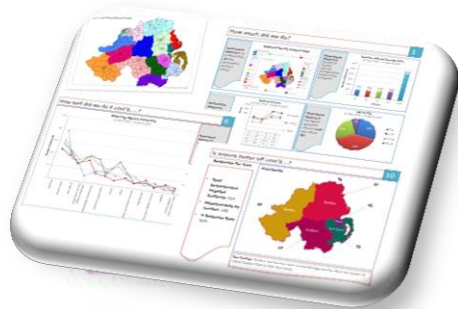


# Recognising our Achievements

## Family Support in the South Eastern Area

Helen Dunn

Regional Family Support Hub Coordinator  
Health and Social Care Board



# Recognising our Achievements

## Family Support in the South Eastern Area

### Short Family Support Hub DVD



# Recognising our Achievements

**Improving the dental health of our children and young people**

Claire Marie Dickson  
South Eastern Health and Social Care Trust



# Recognising our Achievements

**Improving the dental health of our children and young people**

A short video

<https://www.youtube.com/watch?v=8kGYZVLR5ek>





# **Mabel Scullion Early Intervention Manager**

Contact details:  
[mabel.scullion@barnardos.org.uk](mailto:mabel.scullion@barnardos.org.uk)  
07715427791

# Introduction

- **What is Locality Planning?**
- **Early Intervention Lisburn**
  - Partnership Approach
- **Co-Production** – How locality planning can really make it happen



# Setting the context

## What is locality planning?

A partnership of front-line staff from all organisations across the statutory, voluntary and community sectors in the local area, together with children, young people and families. They are open to *all* organisations in the area.

Locality Planning Groups provide the bedrock for integrated planning; their knowledge is vital for identifying local need at an early stage and are therefore essential for planning early intervention services

## Purpose

To improve outcomes for the children and young people in the local area by:

- *Listening to children, young people, parents and families to find their views and needs;*
- *Building on existing social partnerships;*
- *Developing stronger community ownership;*
- *Providing a needs led range of leisure, social, health, educational and housing services in locally agreed and accessible locations.*

# CYPSP Locality Planning

- 28 Locality Planning Groups established across Northern Ireland
- Members have been working together to develop low cost and no cost solutions to local problems based on evidence led quantitative and qualitative data
- Raising awareness of family support services and building a local constituency of support
- Linking families, communities with local services
- Embedding outcomes based planning in local communities
- Dialogue with community about service planning and development

# Locality Planning in the South Eastern Area

Four Locality Planning Groups have been established in South Eastern Outcomes Group Area;

## **1) Ards and North Down LPG**

*(Coordinated by Ralston Perera, SEHSCT and chaired by Cathy Polly, Ards Community Network)*

## **2) Colin Early Intervention Community LPG**

*(Coordinated by David Simpson, Colin NRP and chaired by Michael Murray, SEHSCT)*

## **3) Down LPG**

*(Coordinated and chaired in the interim by Ralston Perera, SEHSCT)*

## **4) Lisburn Early Intervention LPG**

*(Coordinated by Mabel Scullion, Barnardo's and chaired by Adrian Bird, Resurgam Trust)*

# Early Intervention Lisburn

- Initiated by Resurgam Trust in September 2012
- Cross-sectoral partnership community, voluntary, statutory and political partners
- Improve outcomes for children, young people and families in Lisburn

Contact details:  
[mabel.scullion@barnardos.org.uk](mailto:mabel.scullion@barnardos.org.uk)  
07715427791



# EIL Action Plan

- **Phase 1 – Mobilise Existing Resources**
- **Phase 2 – Develop Initial New Services** - *in line with 'The Best for Every Child Report', build on Phase 1 enhance existing EIL services and develop new services to address*

Contact details:  
mabel.scullion@barnardos.org.uk  
07715427791



# Investment Principles

- Democratic Agreement
- Collaborative Approach
- Transparency
- Evidence Based
- Sustainable
- Rigorous Monitoring & Evaluation
  - Demonstrating Effectiveness
  - Impact on Outcomes
  - User Engagement
  - Value for Money



Contact details:  
mabel.scullion@barnardos.org.uk  
07715427791

# Partnership Outcomes

- Faster Referral Uptake
- Knowledge Transfer
- Sharing Resources
- Better Quality Service
- Capacity Building
- Reducing the Competition

# Co-Production

***'A relationship where professionals and citizens share power to plan and deliver support together, recognising that both have vital contributions to make in order to improve quality of life for people and communities'. (National Co-Production Critical Friends Group)***



# Co-Production

- Recognising people as assets
- Valuing work differently
- Promoting reciprocity
- Building social networks

THINK DIFFERENT, THINK FLEXIBLY: THINK CO-PRODUCTION!

SIX PRINCIPLES: ASSETS \* CAPACITY \* MUTUALITY \* NETWORKS \* SHARED ROLES \* CATALYSTS \* \* \*

1

BUILD THE INITIAL TEAM  
BEYOND THE USUAL SUSPECTS

EXTEND!  
EXPAND!  
ENLARGE!

2

WHAT CAN WE DO?

WHAT DO WE KNOW?

WHAT ARE WE GOOD AT?

3

CO-CREATE THE VISION

WHAT DO WE WANT TO DO?

WHERE DO WE WANT TO BE?

WHO CAN HELP US DO IT?

AIM HIGH!

4

CO-DESIGN  
THE SOLUTION

HOW WILL WE DO IT?

ENABLE  
EMPOWER  
EXPLORE!

5

CO-DELIVERY

DO IT!

DO IT TOGETHER!

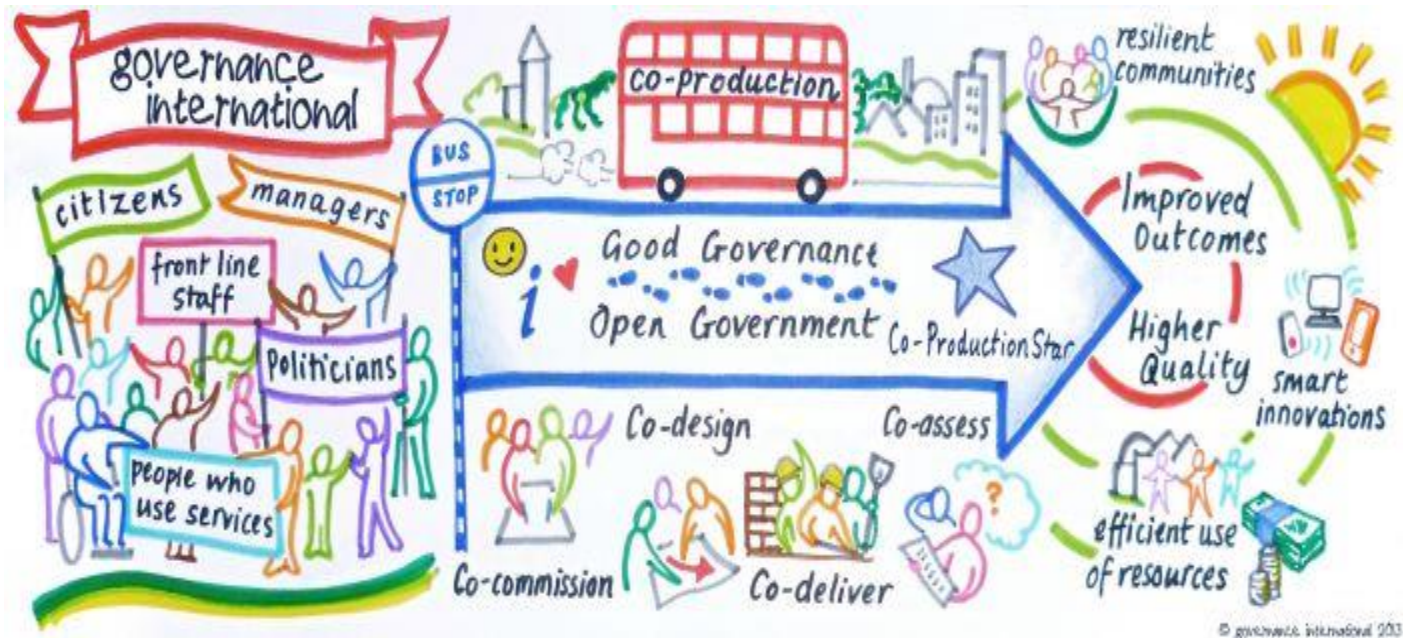
6

CO-EVALUATE

DID IT WORK?

FOR EVERYONE?

Contact details:  
mabel.scullion@barnardos.org.uk  
07715427791



Contact details:  
mabel.scullion@barnardos.org.uk  
07715427791

# Way Forward

## **What we are already doing:**

- Co-Design
- Co-Deliver

## **What we need to improve:**

- Co-Commission
- Co-Assessment
- Reduce the Competition

# **Thank you**

Contact details:  
mabel.scullion@barnardos.org.uk  
07715427791

# **South Eastern Outcomes Group Children and Young People's Plan 2017-2020**

Brendan Whittle,  
Director of Children's Services & Executive Director of  
Social Work  
South Eastern Health and Social Care Trust,







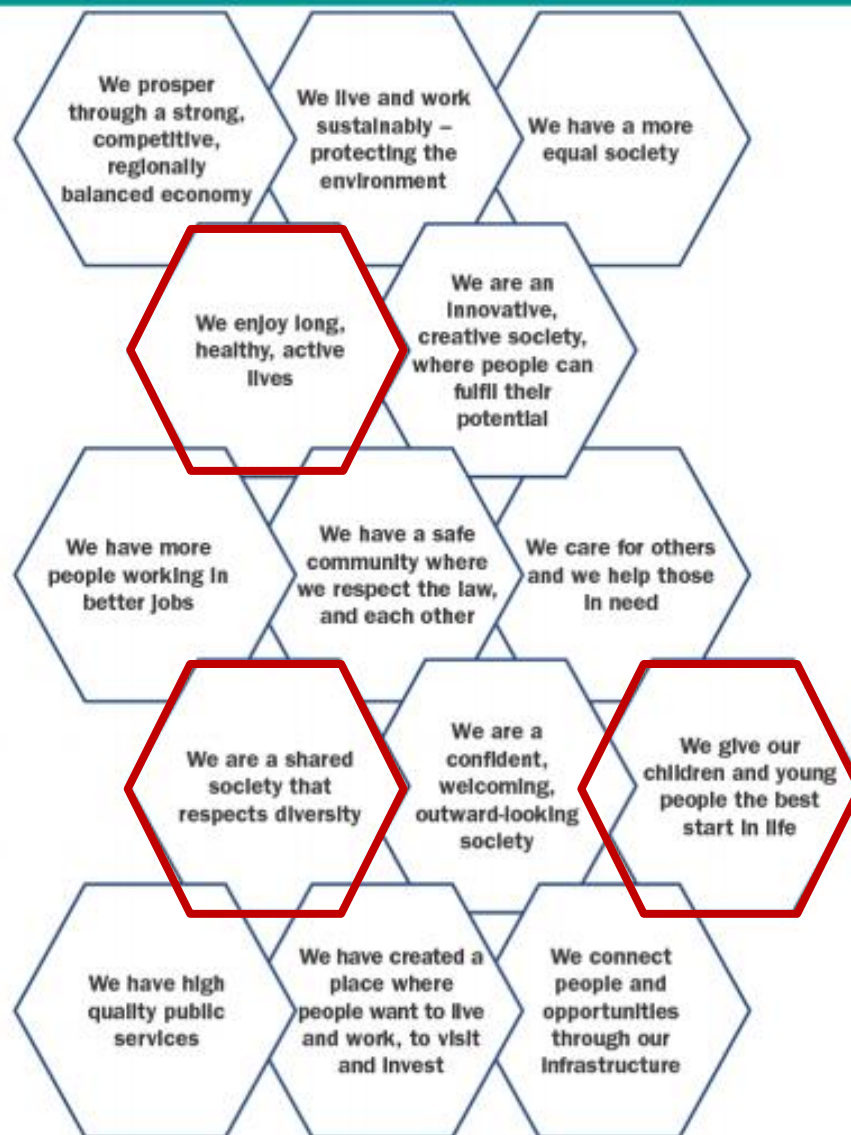
# Programme for Government NI 2016-2021

## Programme for Government Outcomes Framework

### Our Purpose

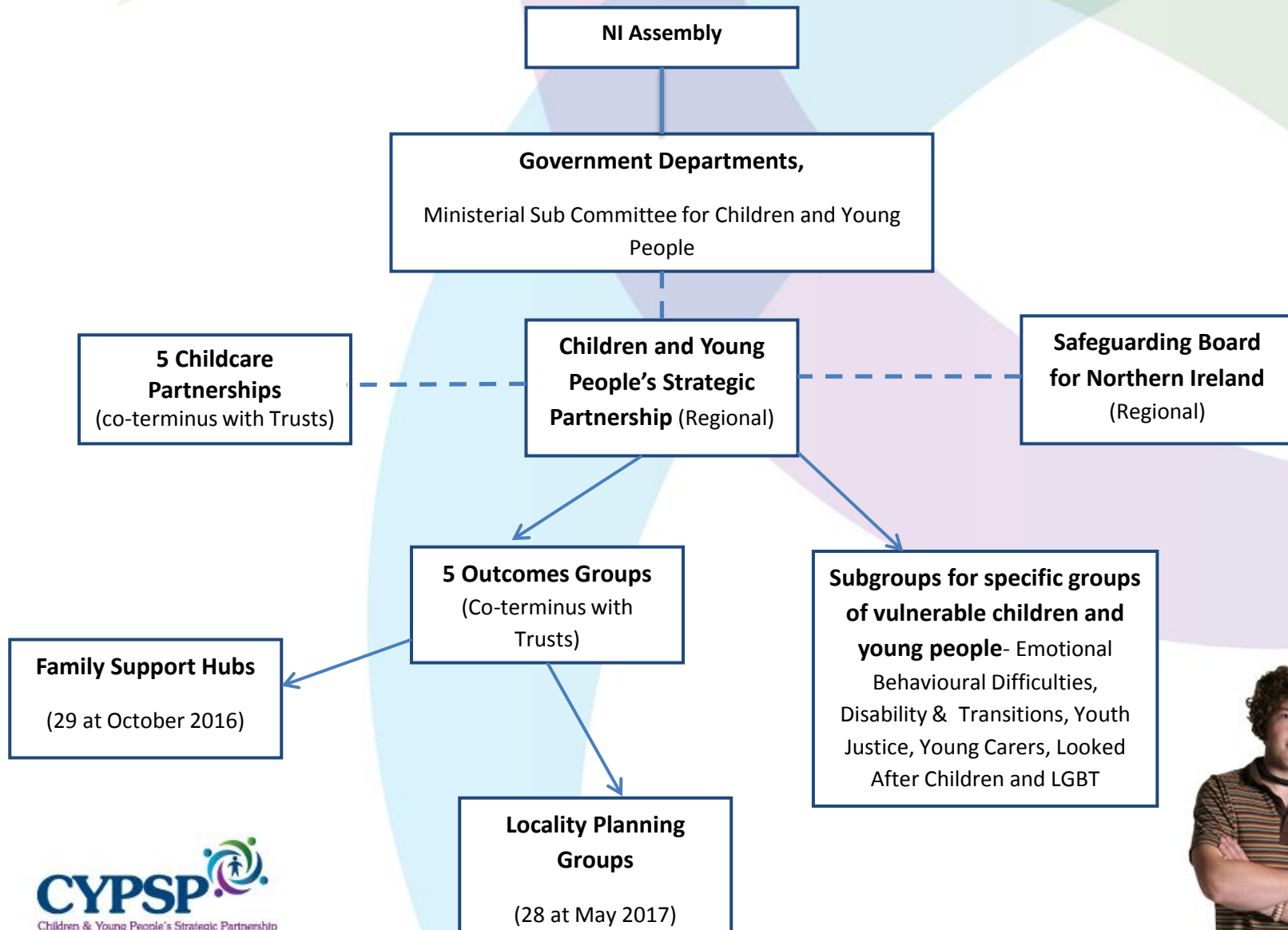
Improving wellbeing for all – by tackling disadvantage, and driving economic growth

### Outcomes





# CYPSP Structure

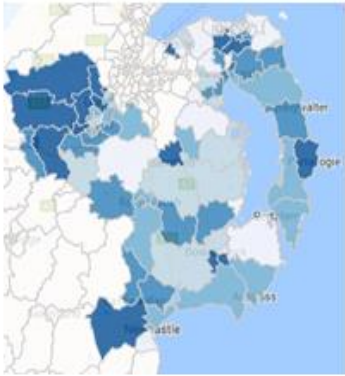


# What is CYPSP?

A multi agency partnership of senior representation of statutory/voluntary/community organisation, Councils and government departments involved in delivering services to children and families

A single partnership covers all of Northern Ireland





**CYPSP**  
**South Eastern Area Outcomes Group**  
**Children and Young People's Plan**  
**2017-2020**







## OUR VISION:

All children in the South Eastern Outcomes Area will flourish and achieve

## UNDERPINNED BY EIGHT HIGH LEVEL OUTCOMES

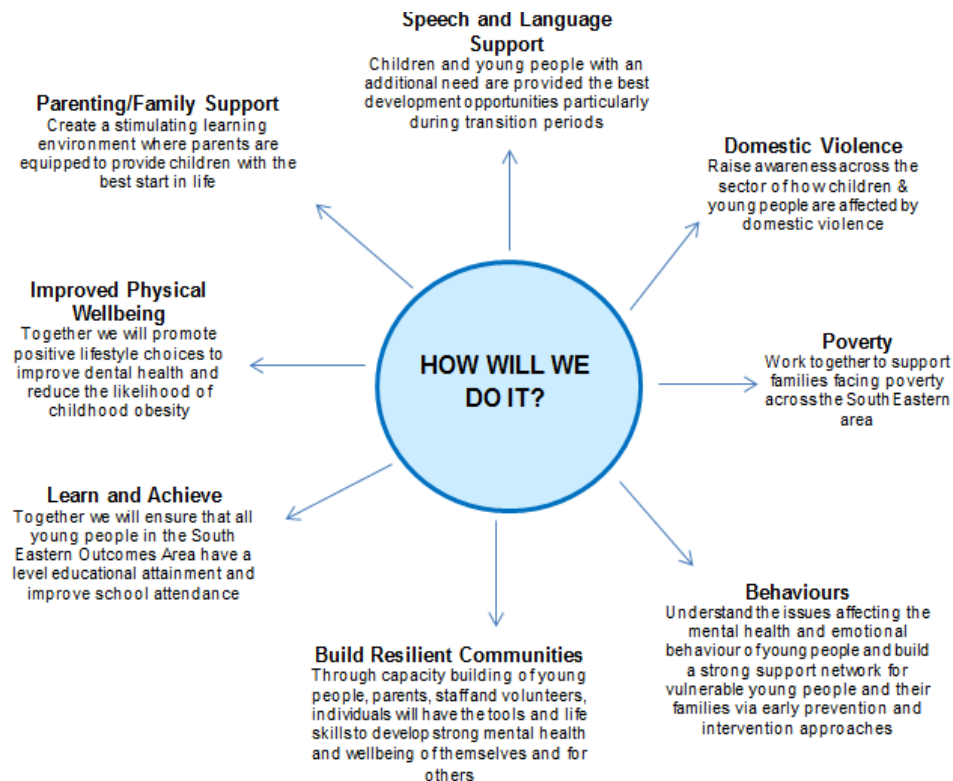
(NI Children and Young People's Strategy)

What we want for all our Children and Young People:

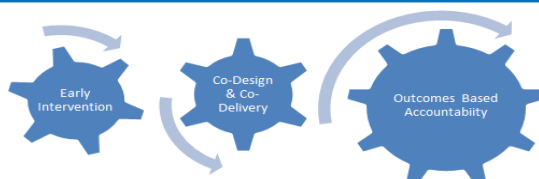
1. Physical and Mentally Healthy
2. Enjoy Play and Leisure
3. Learning and Achievement
4. Living in Safety and with Stability
5. Economic and Environmental Wellbeing
6. Making a Positive Contribution to Society
7. Living in a Society which Respects their Rights
8. Equality and Good Relations

## OUR PRIORITIES

1. Our children and young people will reach their developmental potential
2. Our children and young people will be resilient and have positive mental health
3. Our children and young people will get the best possible early intervention support from their families



## HOW WILL WE UNDERPIN OUR WORK



**Coordination & collaboration via the multi-agency South Eastern Outcomes Group**

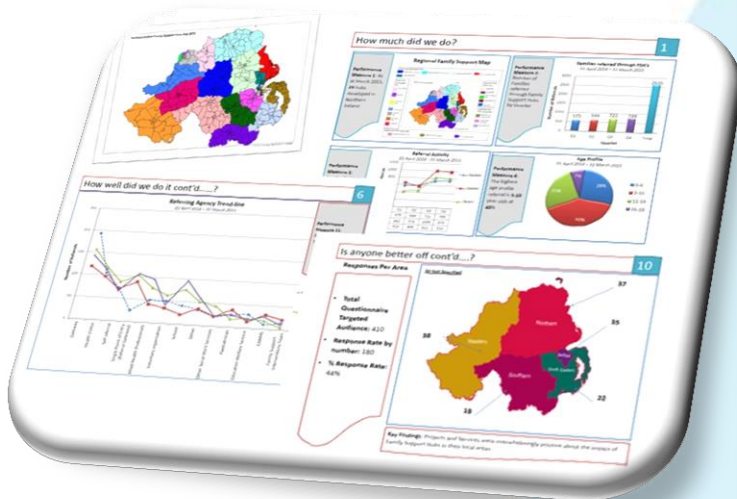


# How will we know if we have made a difference?

**Performance accountability** about the wellbeing of our populations

**Monitoring report cards every 6 months**

- *How much did we do?*
- *How well did we do it?*
- *Is anyone better off?*



# Find out more about our work

- To learn more about our the South Eastern Outcomes Group work visit the CYPSP website [www.cypsp.org](http://www.cypsp.org)
- To learn about early intervention services visit [www.familysupportni.gov.uk](http://www.familysupportni.gov.uk)
- Follow us on twitter CYPSP Northern Ireland (@cypsp)
- Subscribe to our e-zine contact [stephanie.thompson@hscni.net](mailto:stephanie.thompson@hscni.net)

