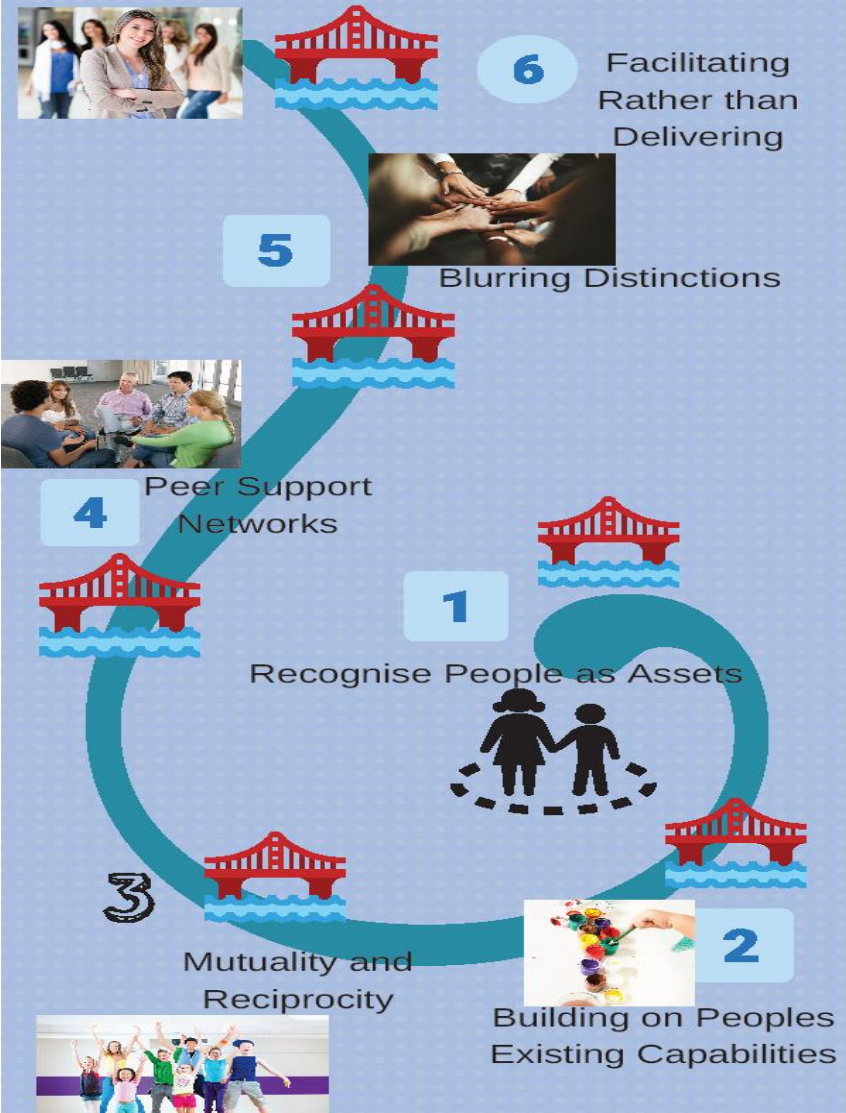




**PARENT
ACTION**

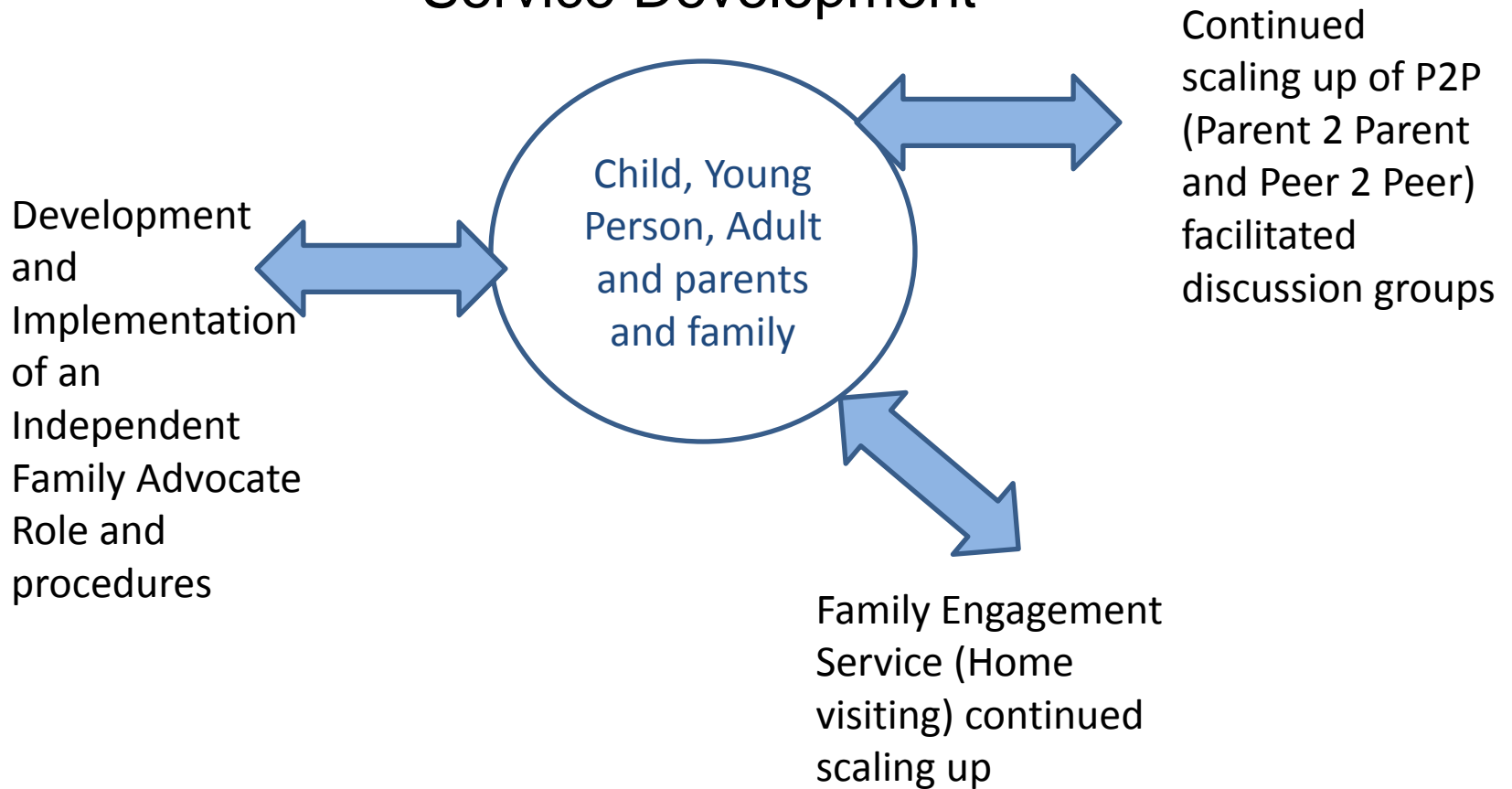


Business Model



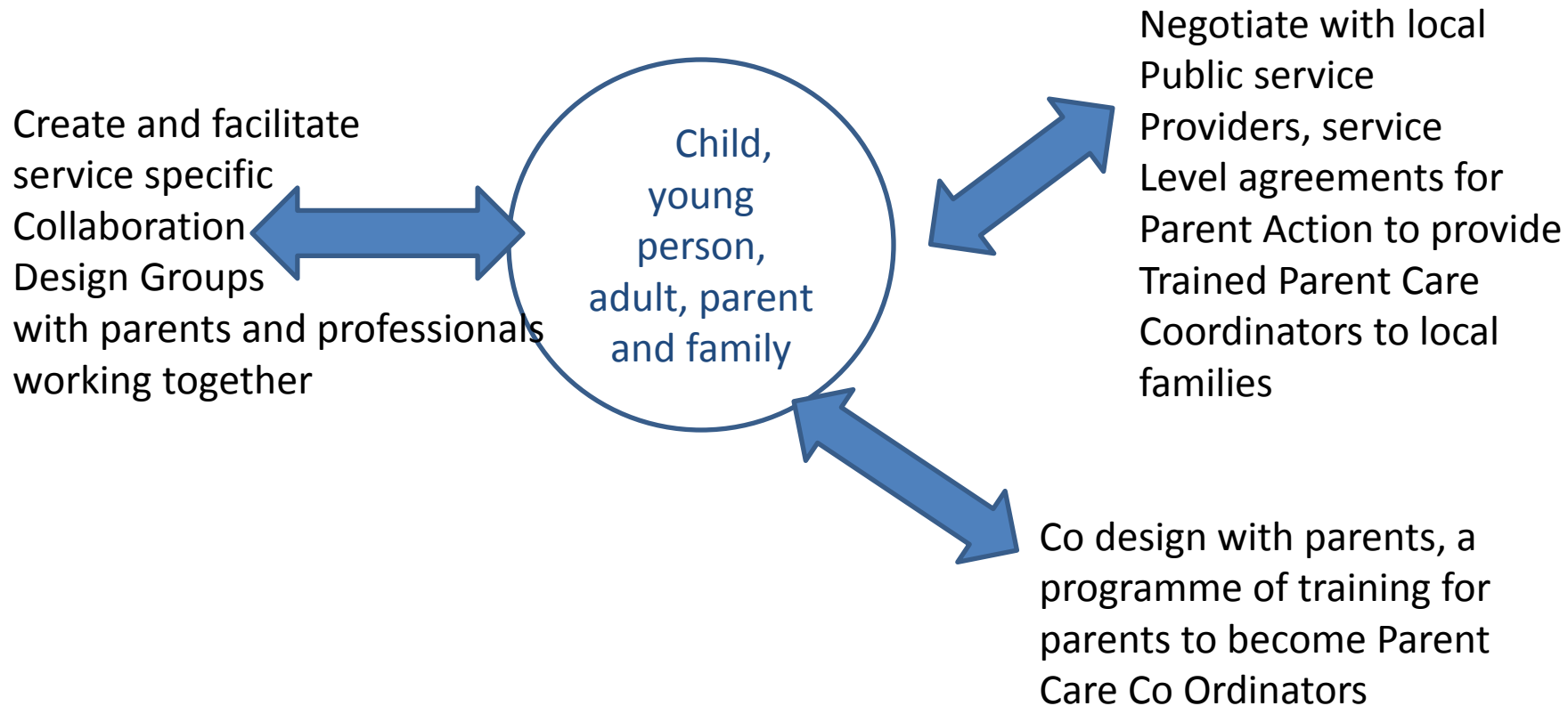
Communication

Family Engagement and Participation Service Development



Care Co Ordination

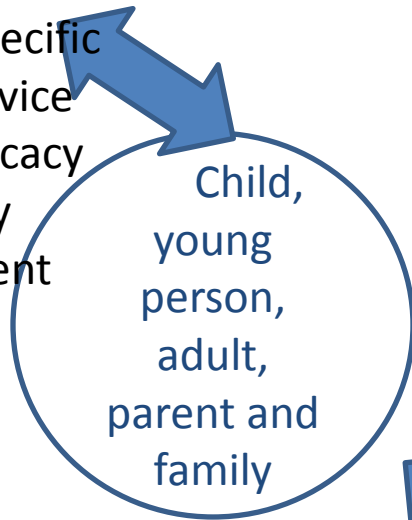
- Care Co Ordination Services Development



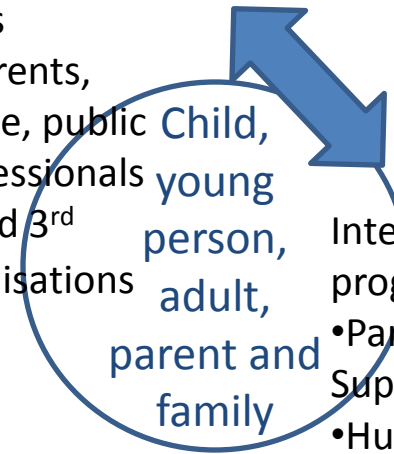
Family Centred Lifelong Planning

- Parent Action Continuing Care Academies

Bespoke
service specific
public service
staff advocacy
and family
engagement
training



Local community
based facilities
providing integrated
training
programmes
involving parents,
young people, public
service professionals
from stat and 3rd
sector organisations

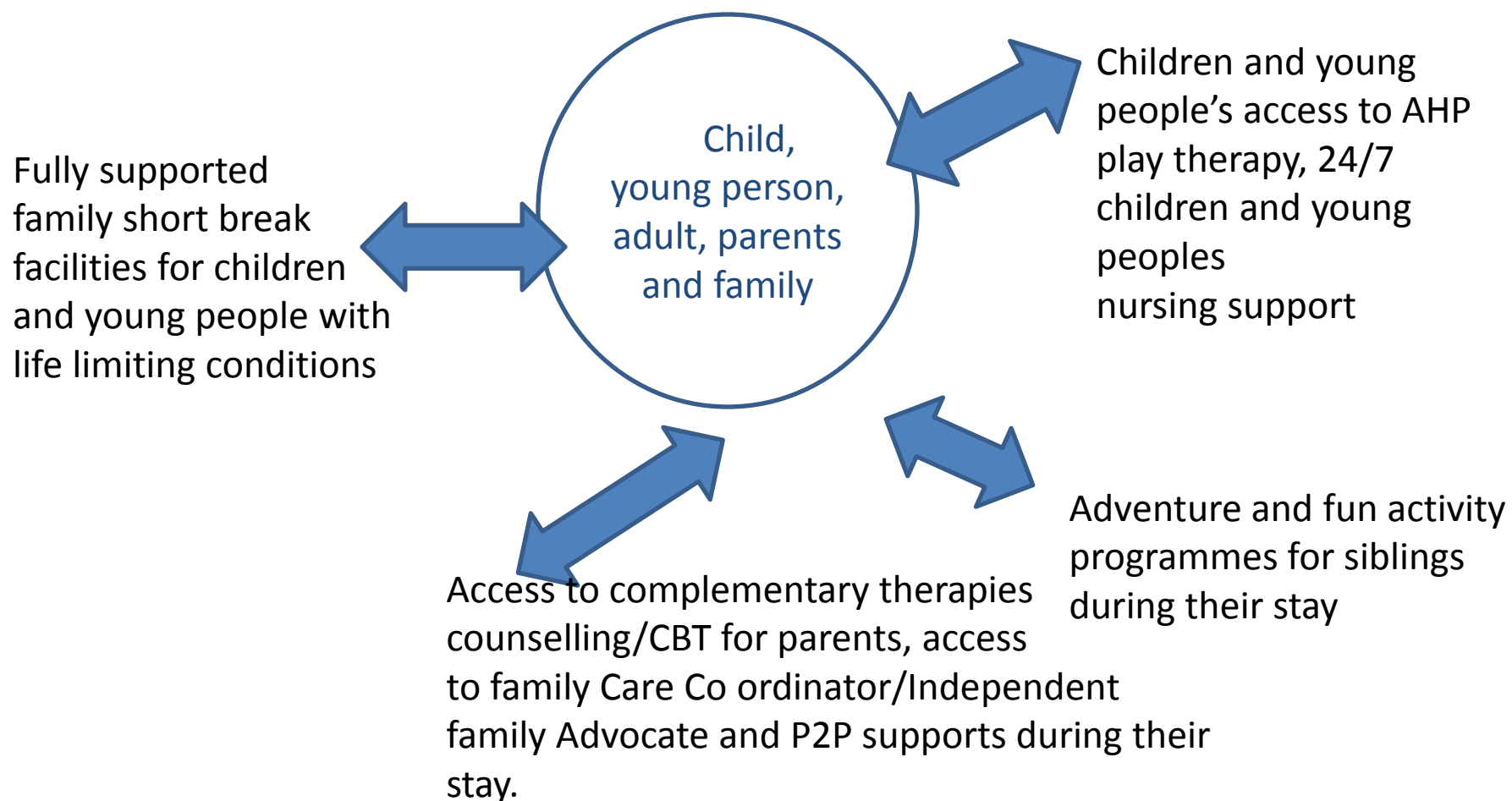


Integrated
programmes include;

- Parent and Family Support,
- Human rights of children, young people and adults with disabilities,
- Practice Development

Progress (Enabling)
Consultancy Services provided
by Parent Action NC, to public
service provider teams

- Parent Action Wellness Centres



Current Public Service Systems serving children, young people and adults with disabilities and their parent advocates (ref CYP Strategy Consultation Document 2016; McCormack et al 2008)

MACRO LEVEL

- The policy and commissioning level of public service

MEZZO LEVEL

- Management, Director level and HSC Trust Boards

MICRO LEVEL

- Lower level management and public service delivery individuals and teams.

MINI LEVEL

- Home, family, parents and individual children, young people and adults with disabilities, in the context also of their schools, daycentres and communities.

Parent Action's Family Engagement and Participation Service: Building Bridges Programmes

Parent Action Nurse Consultant role facilitating shared visioning and providing leadership

MACRO LEVEL

- The policy and commissioning level of public service

MEZZO LEVEL

- Management, Director level and HSC Trust Boards

MICRO LEVEL

- Lower level management and public service delivery individuals and teams.

MINI LEVEL

- Home, family, parents and individual children, young people and adults with disabilities, in the context also of their schools, daycentres and communities.

Parent Action Nurse Consultant facilitating shared visions for developing and implementing policy with a strong parent, child and young person's voice

Parent Action Nurse Consultant and staff, facilitating Collaboration Design Groups, bringing parents and professionals together.

Independent Family Advocates gathering data from families

Parent Action's Response To CYP Strategy Consultation: Main Points

- **Our parent and family engagement services and tools.**
- **The definitions that parents and young people with disabilities use to define when they feel engaged.**
- **To elaborate on the Parent Action Model and our strategic objectives for it's implementation**
- **Ideas and solutions that parents and children and young people with disabilities, have co designed with us, to overcome barriers to participation in decision making.**
- **Our co production model of quality improvement in public services, that parents have co designed with us,**
- **Discuss the merits of exploring the different sources of 'evidence' ie; published research, local audit data, public service professional expertise evidence, service user expertise evidence,**