

Education: Building Our Children's Future

Presentation to Downpatrick Locality
Planning Group

22February 2018

- Integrated Education
- Integrated Education Fund (IEF)
- Our Education System: An Overview
- Education in the Newry Area
- Key Challenges
- Way Forward

Integrated Education

- Integrated schools bring together children and adults from Catholic, Protestant and other backgrounds. The schools **strive to achieve a religious balance of pupils, teachers and governors** and **acknowledge and respect the cultural diversity** they represent.
- Integrated schools educate children in an environment where **self-esteem and independence are developed as priorities. Self-respect and respect for others are strongly encouraged.** The integrated ethos is nurtured to ensure **inclusion of people from different religions, cultures, genders, abilities and socio-economic backgrounds.**
- The **1989 education reform order** gave the Department of Education statutory responsibility to encourage and facilitate integrated schooling.

Integrated Education Fund

- IEF was established in 1992
- In 1992 there were 3,408 school children in 18 integrated schools
- In 2017 there were over 22,000 school children in 65 integrated schools
- IEF investment in integrated schools and education totals £20+ million
- Integrate My School Campaign (www.integratemyschool.com)
- Community Consultations & Conversations

Our Education System: An Overview

Department of Education
Promote education in NI and ensure effective policy implementation



Education & Training Inspectorate (ETI)
Inspect educational and youth provision

Planning Authorities

Education Authority (EA)

- Organise educational and youth provision
- Employ all staff at controlled schools and non-teaching staff at Catholic Maintained schools

Council for Catholic Maintained Schools (CCMS)

- Promote effective Catholic maintained schools
- Employ all teaching staff at Catholic Maintained Schools

Arm's length bodies

Council for the Curriculum Examinations and Assessment (CCEA)
Provide advice and support on curriculum and assessment

General Teaching Council for NI (GTCNI)
Promote teacher professionalism

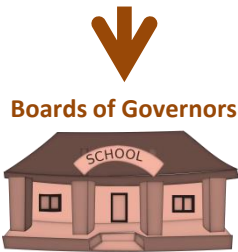
Northern Ireland Council for Integrated Education (NICIE)
Promote and support integrated education

Comhairle na Gaelscolaíochta (CnaG)
Promote and support Irish-medium education

Controlled Schools' Support Council (CSSC)
Promote and support controlled education

Middletown Centre for Autism
Promote and support training and research

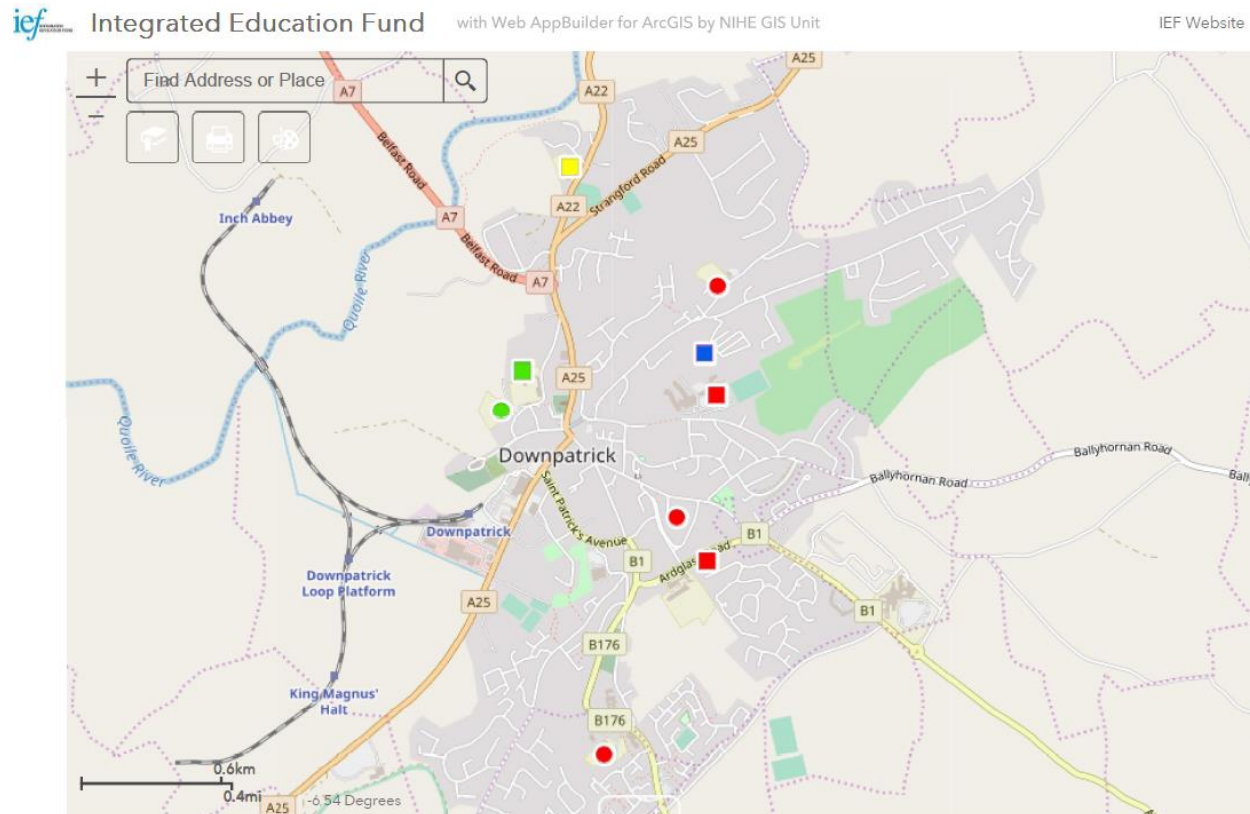
Schools



Youth Provision

119 statutory settings and over 1,700 voluntary organisations
148,000 registered participants

Downpatrick area schools:



Downpatrick area schools:

	#	CCMS	Controlled	Integrated	Irish Medium	Grammars
Primaries	16	14 (87.5%)	2 (12.5%)	0	0	n/a
Post-Primaries	5	3 (60%)	1 (20%)	1 (20%)	0	2 (40%)

	1% or more Newcomers	1% or more Newcomer Pupils (Grammars)	1% or more Newcomer Pupils (Non-Grammars)
Primaries	5 schools (31%)	n/a	n/a
Post-Primaries	1 schools (20%)	0.0%	1 schools (20%)

	Free School Meals (FSM) Average	Average FSM (Grammars)	Average FSM (Non-Grammars)
Primaries	32%	n/a	n/a
Post-Primaries	28%	10%	41%

	Average % Catholic	Average % Protestant	Average % Other
Controlled Primaries	22.5%	51.2%	26.2%
CCMS Primaries	85%	0.4%	1.4%
Controlled Post-Primaries	-	-	-
CCMS Post-Primaries	98.3%	*/#	*/#
Controlled Grammars	18.1%	68.7%	13.2%
CCMS Grammars	96.6%	1%	2.4%
Integrated	34%	52.8%	13.2%

Key Challenges:

- Inequalities & Underachievement
- Budgetary Pressures
- Segregated Housing, Segregated Education

Way Forward:

- www.integratemyschool.com
- Engaging Parents & Local Communities
- School and Community Grants
- IEF on Facebook and Twitter

Thank You!

For more information, please contact:

Jessica Blomkvist
Integrated Education Fund
Forest View, Purdy's Lane
Belfast, BT8 7AR
Tel: 028 9069 4099
Email: jessica@ief.org.uk

twitter

www.twitter.com/iefni

facebook

www.fb.com/IntegratedEducationFund

www.ief.org.uk