

Children and Young Peoples Strategic Partnership

Interactive Mapping Tool *User Guide*



September 2018

CYPSP Interactive InstantAtlas™ Mapping Tool

Overview

InstantAtlas™, developed by Geo Wise Ltd, is an online tool for the display of geographically indexed quantitative data in a dynamic format to inform key time-based and geographical trends. InstantAtlas™ is used by the ' Children and Young People's Strategic Partnership as a customised template that is populated and updated with relevant data from a range of sources to show an overview of indicators aligned to the high level outcomes set out in the Northern Ireland Children's Strategy. More information on these can be found here. – www.cypsp.org

The Instant Atlas templates also use a background mapping layer from Google™. This will work automatically when the template is launched yet in some instances is dependant upon the settings of your workstation especially if you are on a network (at work or using free Wi-Fi in a café). If the background mapping layer does not load then you need to follow some guidance from [this helpful guide](#) (page 123).

If your computer is on a network you may need to be logged on as an administrator to successfully install the viewer and allow its settings to operate. Please contact your network administrator and [direct them to this guide](#). They can then allow your workstation to receive all the features of InstantAtlas™.

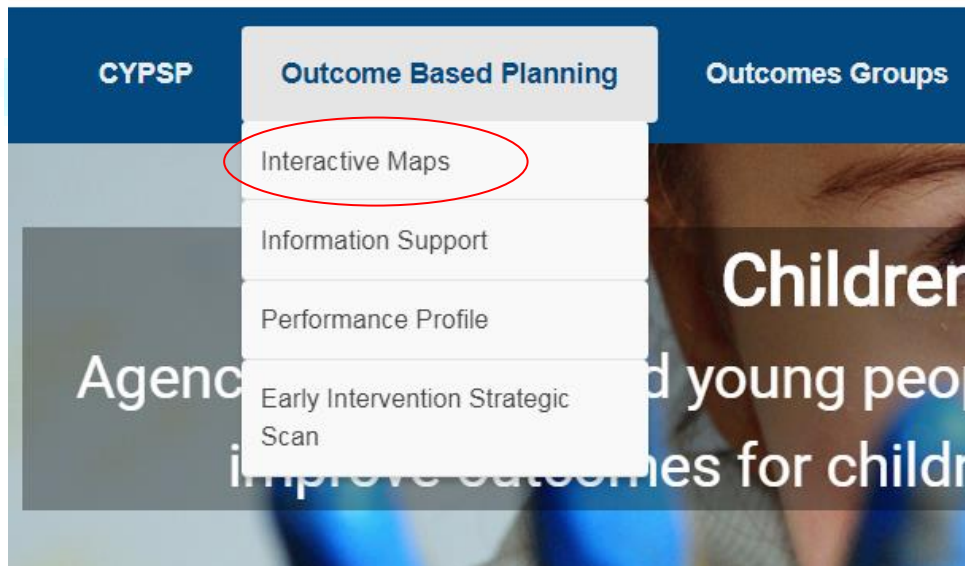


Introduction – Getting Started

CYPSP Interactive Mapping System

Step 1: To access the Children and Young People's Strategic Partnership website, please select or type the following link into your URL www.cypsp.org

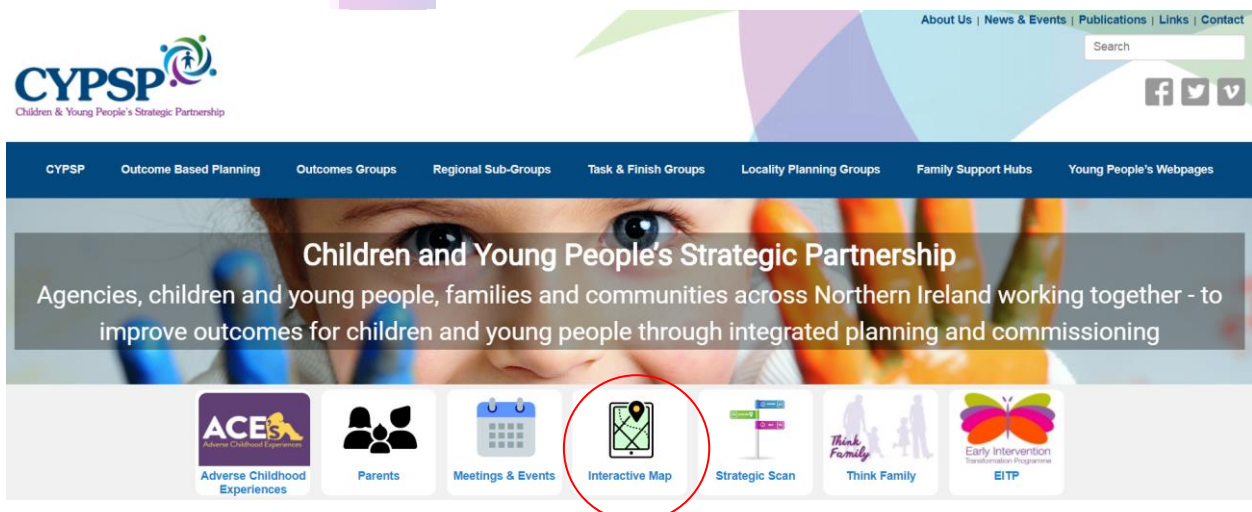
Step 2: To access the Interactive Maps, select Outcomes Based Planning within the drop down menu or scroll down to Statistical Information and select Interactive Maps icon (please see below demonstration).



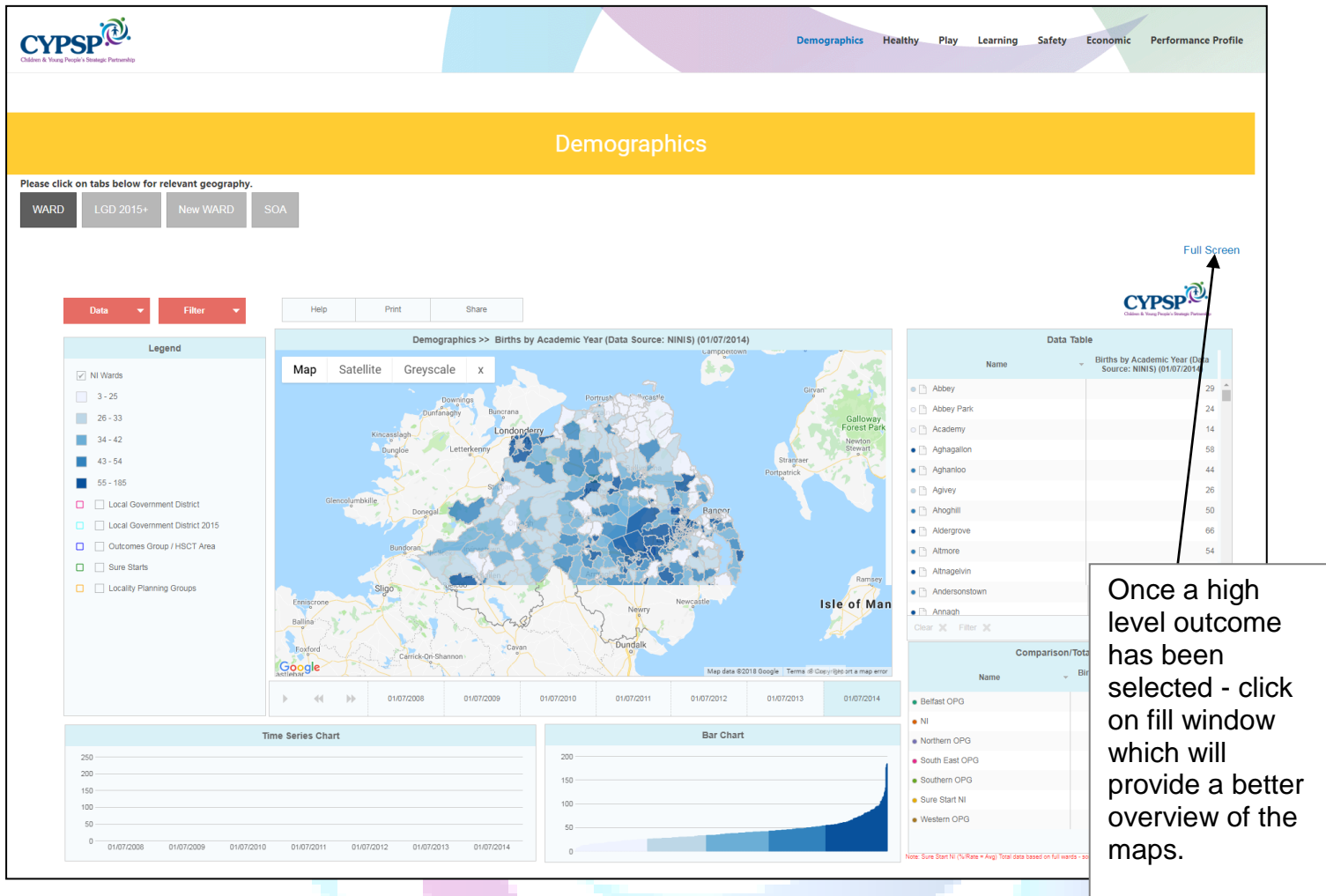
Outcomes Based Planning (Drop down menu example)

Or

Interactive Maps Icon



Step 3: The Interactive Maps page will automatically load. Along the top of the map you can see tabs showing Northern Ireland High Level Outcomes.



Step 4: Select the required geography using the options show below which appear at the top of the map.

Please click on tabs below for relevant geography.



Contents:

1 Basics of the Instant Atlas Screen (template)	6
Control Panel	
Indicator Button	
Filter	
2 Legend	9
Legend	
Legend Settings	
3 The Map Panel	10
Thematic Maps	
Legend	
Google® Map Background	
Service location pointer data	
Legend Settings	
Map Exporting / Printing / Licensing	
4 Data Table	12
Data values	
Meta Data	
Zoom function	
5 Time Animation	13
Select trended data	
Press play	
Filter data	
6 Time Series Chart	13
Select trended data	
Compare data	
Filter data	
7 Bar Chart	14
Hover for information	
Filter Data	
Select more than 1 area to highlight	
8 Comparison Table	14
9 Performance Profile	15
Notes and Disclaimer	18

Basics of the Instant Atlas Screen (template)

The InstantAtlas template developed for the Children and Young People's Strategic Partnership displays the same data simultaneously in a number of different ways. The template consists of (see Fig 1 below):

1. **Control Panel** (see Fig 2 page 7 for more information)
2. **Legend Table** showing quantiles of the dataset selected and a key for locational data categorised by type.
3. **The Map Panel.** A thematic map of Northern Ireland, Ward Boundaries with optional background mapping.
4. **A Data Table** showing the name of the area and its associated indicator value, you can view the highest to the lowest population also.
5. **A Timeline Animation Panel** to show time series data on the map and underneath a table displaying data (if selected) on a time series chart.
6. **A Time Series Chart** showing the trend of data over a time period highlighted from the data table.
7. **A Bar Chart** of data by geographical area ordered according to magnitude of value.
8. **Comparison/Totals Table** when appropriate allows the average at Northern Ireland Level as well as each Outcomes Area (Trust Level).

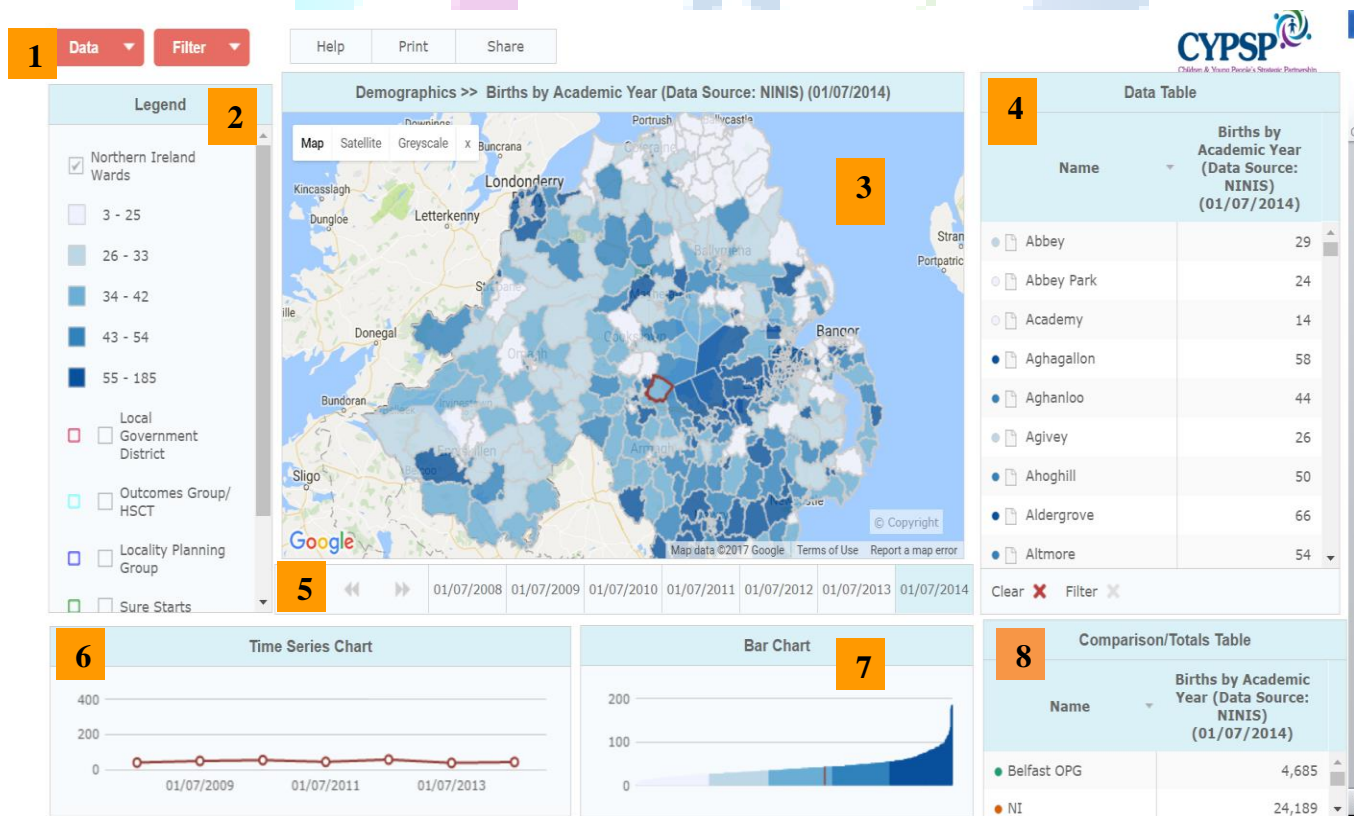


Figure 1 Instant Atlas Template

The next pages describe in more detail as to what each number (area of template) refers to...
 CYPSP Information Team

1

Control Panel

The control panel has 5 buttons.

- **Data** – Click to see all available datasets / Indicators
- **Filter** – Click to view data from Health Boundaries or NI Region
- **Help** – Click here to view some Instant Atlas help
- **Print** – Click here to print
- **Share** – Click here to email or embed report

The Data button is the most important and should be used to view the list of associated (datasets) under the outcome it is aligned to:-

In order to view the appropriate dataset, please carry out the following:

1. Select Data
2. Select Outcome (example shown Demographics)
3. Select the appropriate dataset
4. Select the appropriate year

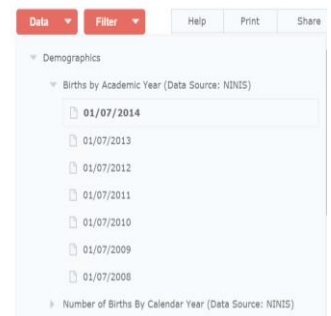


Figure 2 - Data Menu

The Filter Button: This is a built in filter for the CYPSP website, the information can be filtered down by the following:

- Local Government District
- Local Government District 2015
- CYPSP Outcomes Groups
- CYPSP Locality Planning Groups
- Family Support Hubs
- Urban / Rural
- Sure Start
- Deprivation 2010

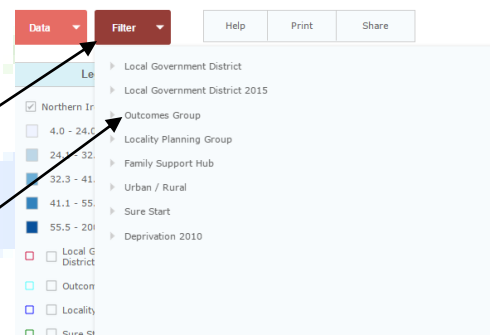


Figure 3- Filter Menu

Step 1: Select Filter Button

Step 2: Select from following options

Please ensure you select the drop down arrows when making your choice.

Help Button: Provides assistance on how to use Instant Atlas Dynamic Report. Please see below example.

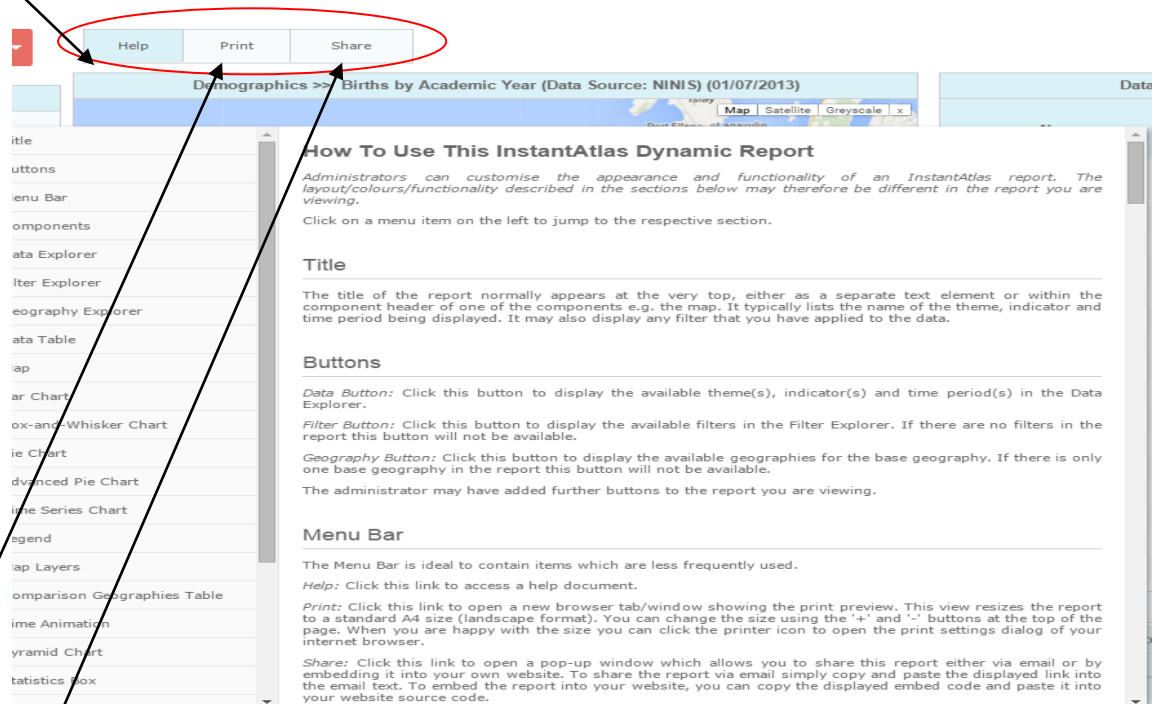


Figure 5 Help; Print; Share

Print Button: Click this link to open a new browser tab/window showing the print preview. This view resizes the report to a standard A4 size Landscape format. You can change the size using the + and - buttons at the top of the page. When you are happy with the size you can click the printer icon to open the print settings dialog of your internet browser.

Share Button: Click this link to open a pop up window which allows you to share this report either via email or by embedding it into your own website. To share the report via email simply copy and paste the displayed link into the email text. To embed the report into your website, you can copy the displayed embed code and paste it into your website source code.

2

Legend

The legend dialog box provides all the information associated with the map on view

- **Legend**
- **Legend Settings**

The '**Legend**' allows you to see the data displayed on the map and a key to the locational categories that you can choose from. Also the data distribution range and what the class selected shows in value.

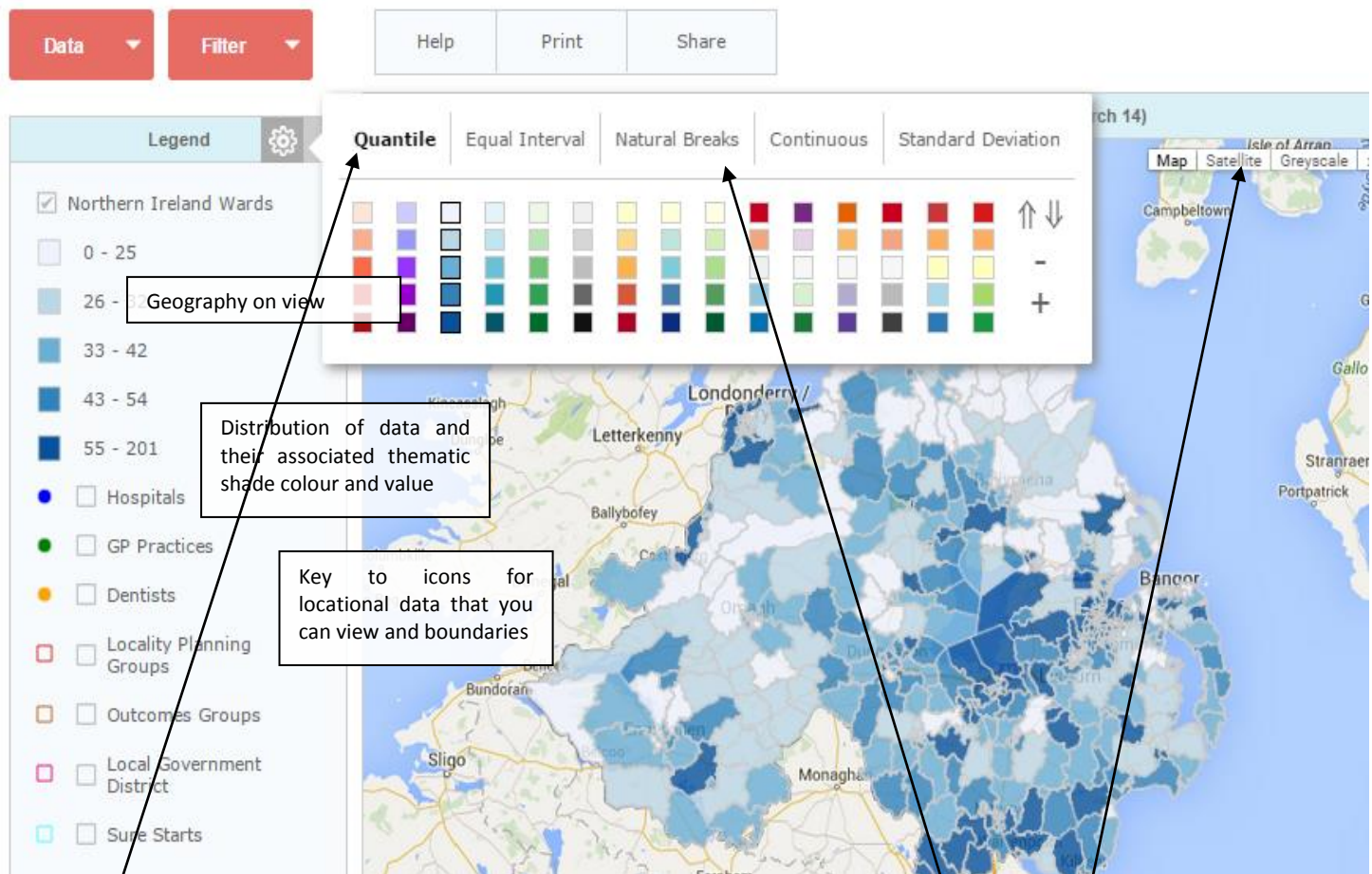


Figure 6 Legend Dialog

Legend Settings can be controlled by clicking on the cogwheel icon that appears in the top right hand corner of the legend window. This allows control of the colour palette, direction of palette and a + and - for number of classes. It also allows for different Classifiers.

All maps are overlaid onto a **Google® maps background** to allow locational information to be interactively displayed. Those familiar with Google Maps® can use its main features such as choosing map, satellite or greyscale display. You can also remove the Google® Map from the background by clicking on x.

3

The Map Panel

The map displays thematic data based on the indicator selected. There is also a background map (from google®) to allow easy locational information to be provided

- **Thematic Maps*** – Shaded maps showing selected indicator data
- **Service location pointer data** – Allowing user to add the locations of various categories of service
- **Note about SureStart** – Some Sure Start Areas only provide services to part wards (List provided)
- **Export** – various parts of the mapping system as a JPEG or PNG
- **Print** – map or various parts of the mapping system and scale to fit.

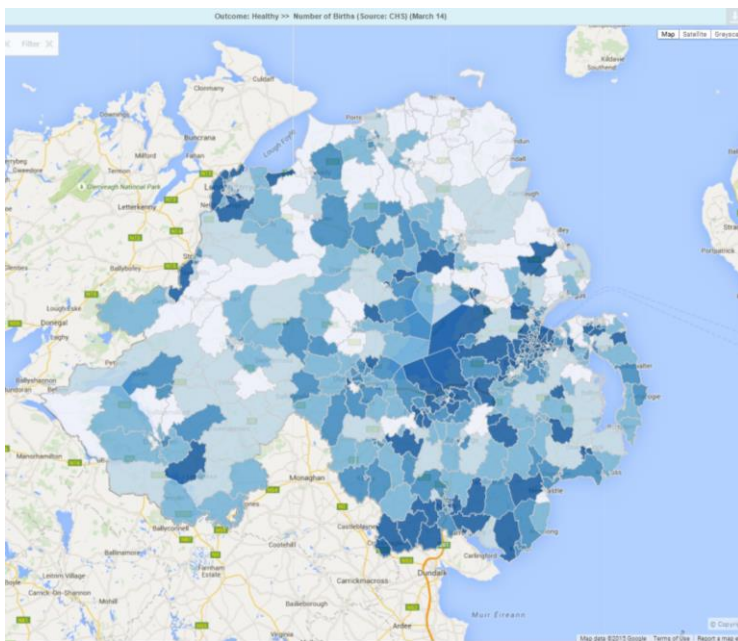


Figure 7 – Thematic Maps

Thematic maps (or choropleth maps) visually show distributions of data over the same geographic boundaries within an area. Our data is shown by the ward, local government district boundary within the Northern Ireland Region. [More information on this type of mapping can be found here.](#)

Service location pointer data has been included so you can select the appropriate service type available within the select areas. For example:-

- Pre-Schools
- Nursery Schools
- Primary Schools
- Post Primary Schools
- Outcomes Group / HSCT
- NI Local Government District

To view service types:

- Click on the checkbox of the service required in the **legend table**.
- Hover your mouse over each icon on the map, which will provide the name of the service.

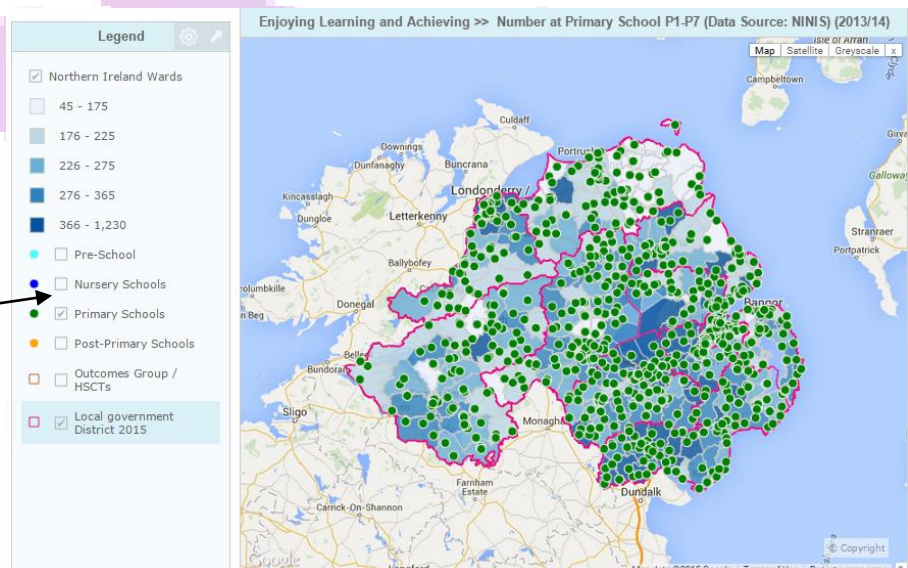


Figure 8 – Thematic Maps - Primary Schools

Map Zoom

To zoom in and out of the map, a + and - magnifier is available on top left hand corner of the mapping pane. To zoom in select + to zoom out select - as demonstrated.

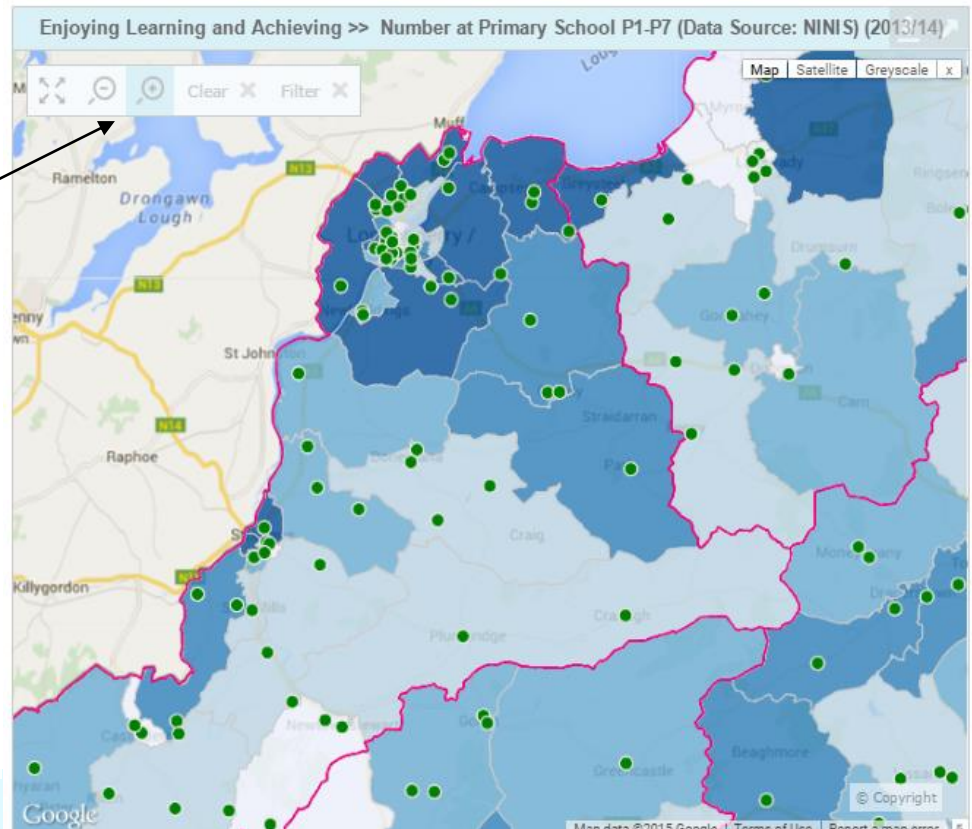


Figure 9 – Thematic Maps – Zoomed in/Out

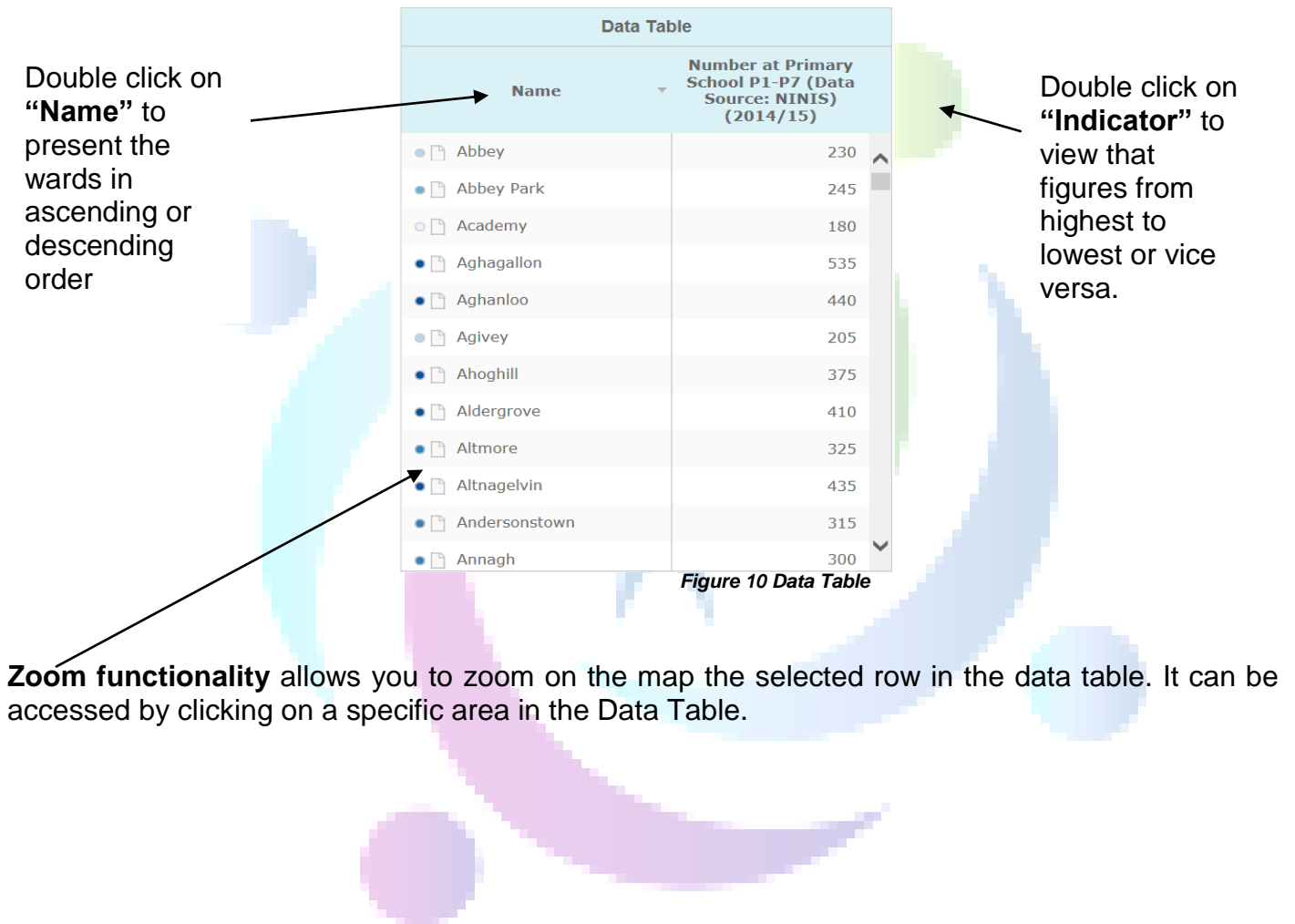
4

Data Table

The data table dialog box provides all the available geographic boundaries and their indicator level

- **Data values**
- **Zoom function**

Data values are displayed for each selected indicator by their geographic boundary. When you hover over the different rows the corresponding area is highlighted on the map in red and if there is trend data available the line chart is also displayed. You can order these rows by the clicking on the table header (**Name**) or (**Indicator**)



5

Time Animation

If the selected indicator (dataset) has a list of years against it you can create a time animation.

- **Select trended data**
- **Press play**
- **Filter data**

Time Animation allows the bar chart and thematic map to show an animation over the time period available of a selected indicator. This only applies to data that has yearly information available. To start the time animation, select the indicator and then click the play button (▶). You can also move forward and backward by clicking the < > buttons.

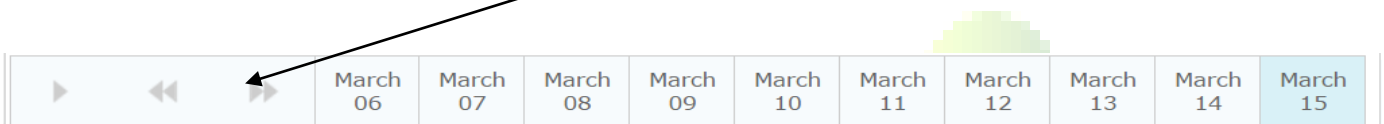


Figure 11 Time Animation

6

Time Series Chart

If the selected indicator (dataset) has a list of years against it you can view the data as a trend line on the time series chart

- **Select trended data**
- **Compare data**
- **Filter data**

The **Time Series Chart** is a line chart showing any trend analysis where the indicator selected has yearly information and measures the direction the trend is travelling.

To **select trended data** simply mouse click on the area of the map or click the row in the main data table or click in the Bar Chart.

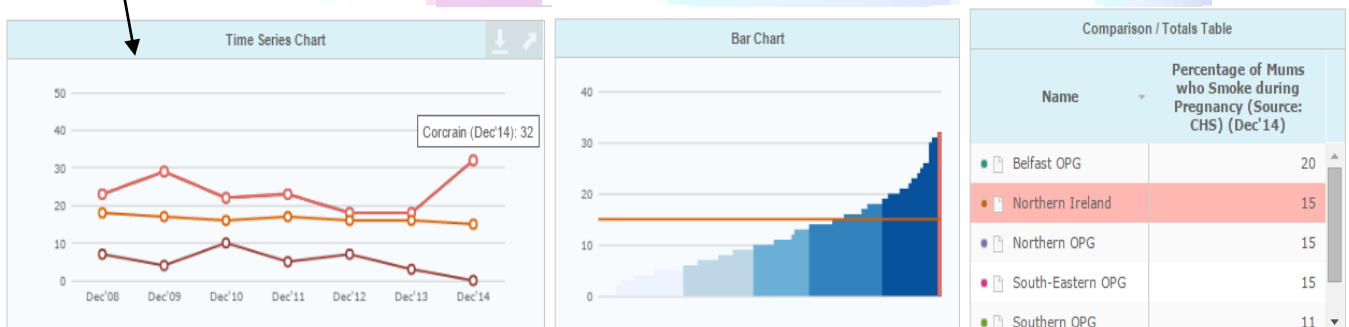


Figure 12 Time Series Chart

Above you can see an example “**Percentage of Mums who smoke during Pregnancy**” – Year: December 2014 – Filter: Southern Outcomes Group / HSCT. Northern Ireland Avg: 15% Southern OG Avg: 11 %. As you can see the information is trended on the Time Series Chart displaying the highest ward Corcrain 32 % where Donaghcloney is 0%.

7

Bar Chart

The bar chart shows the data of all geographic areas

- **Hover for information**
- **Filter Data**
- **Select more than 1 area to highlight**

The bar chart shows all the geographic areas and how they compare to each other. To view what each bar refers to and its value simply **hover** the mouse over each bar **for information**. (See below example)

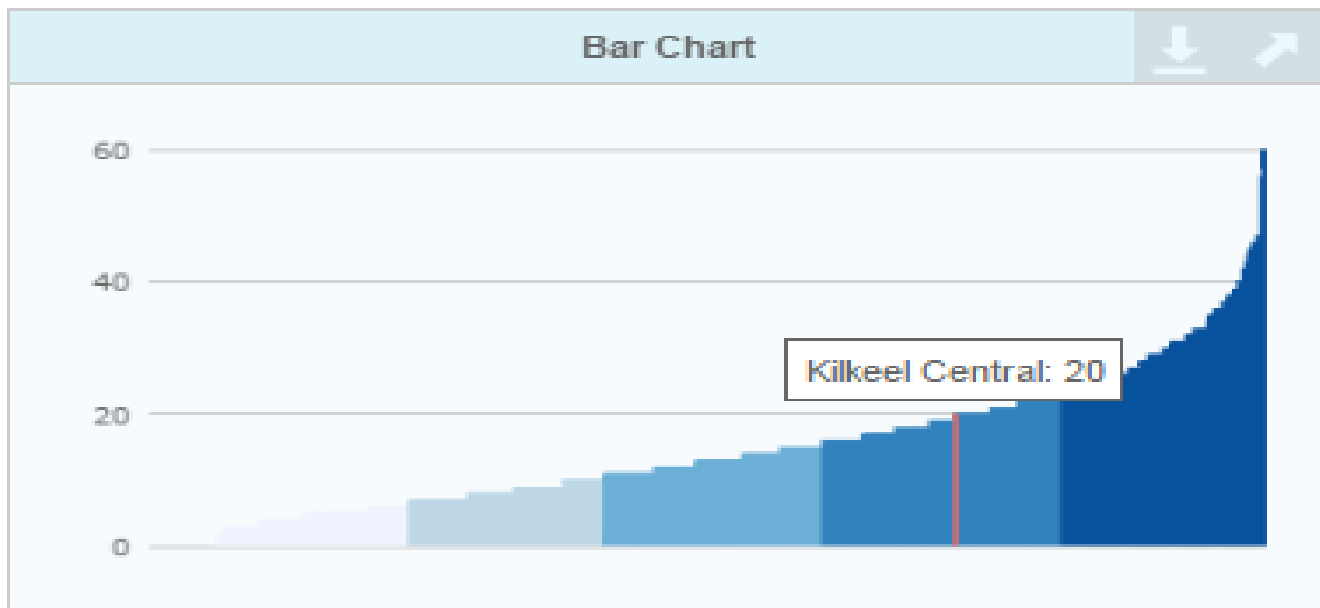


Figure 13 – Bar Chart

Select more than one area to highlight by simply clicking on one bar hold the 'ctrl' button and then click on other bars which will select on the map and data table also.

8

Comparison Table

This Table allows you to measure data against Northern Ireland average and at Outcomes Group Level.

Comparison / Totals Table		
Name		Percentage of Mums who Smoke during Pregnancy (Source: CHS) (Dec'14)
Belfast OPG		20
Northern Ireland		15
Northern OPG		15
South-Eastern OPG		15
Southern OPG		11
Western OPG		16

To select comparison areas just click on each comparator you want to view.

Figure 14 – Comparison/Totals Table

9

Performance Profile

This Table allows you to measure data against Northern Ireland average and at Outcomes Group Level.

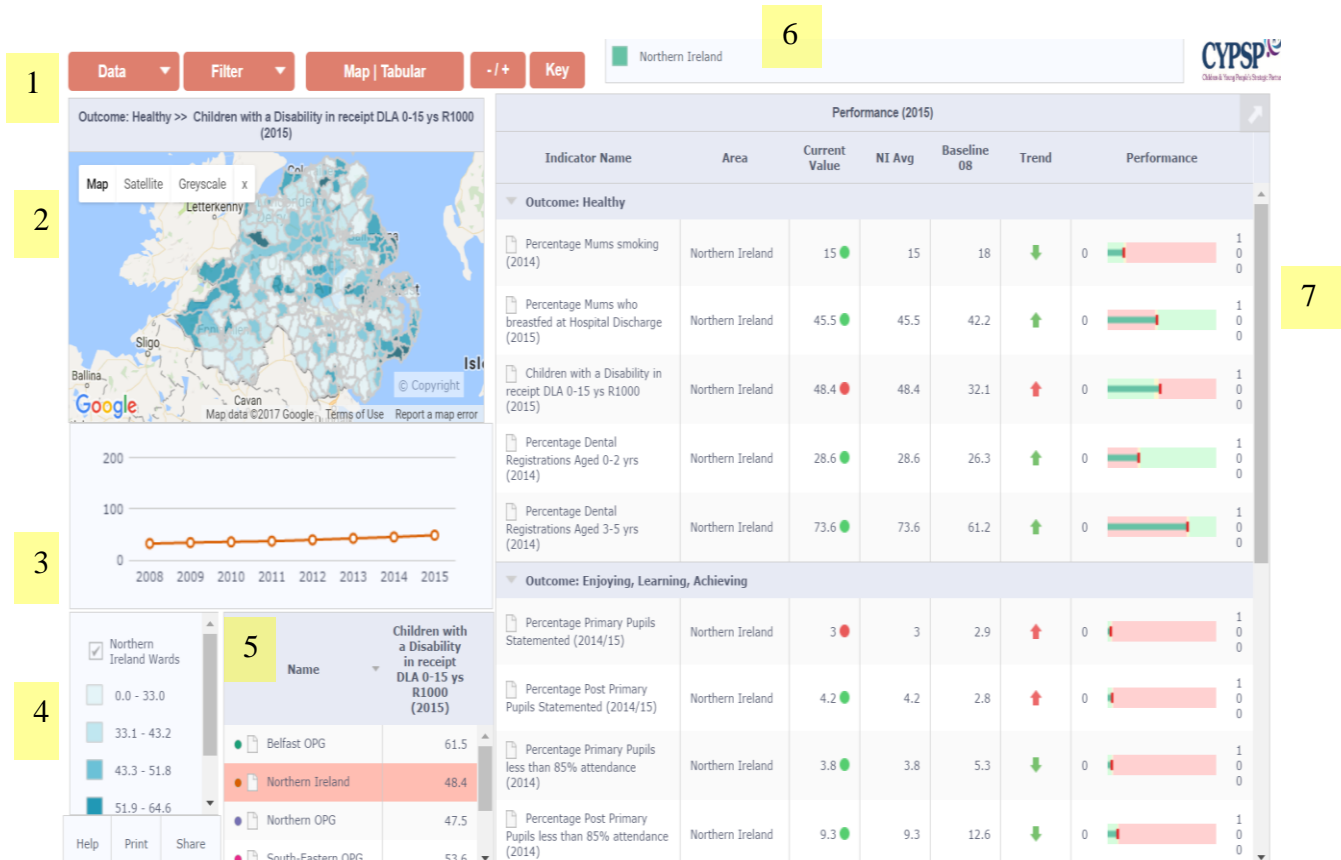
What is the CYPSP Performance Profile?

Figure 15 – Performance Profile Table

The profile provides a clear accessible view of data on an area basis:-

1. Control Panel and title (see Fig)
2. The Map Panel - A thematic map of the Region with optional background mapping.
3. Time series chart showing the trend of data over a time period by area by individual indicators.
4. Legend Table showing the dataset selected and a key for each thematic quintile measure.
5. Comparison table to compare data against N.I. and Outcomes area.
6. Key to highlight the data type selected and is colour coordinated with the time series chart and performance table.
7. Table showing a list of indicators under each high level outcome, Area selected current Value, NI Avg, Baseline, Trend showing the direction and Performance against the NI Avg.

How to use the Performance Profile Screen

Data button – Select to view list of data sets under each High Level Outcome.

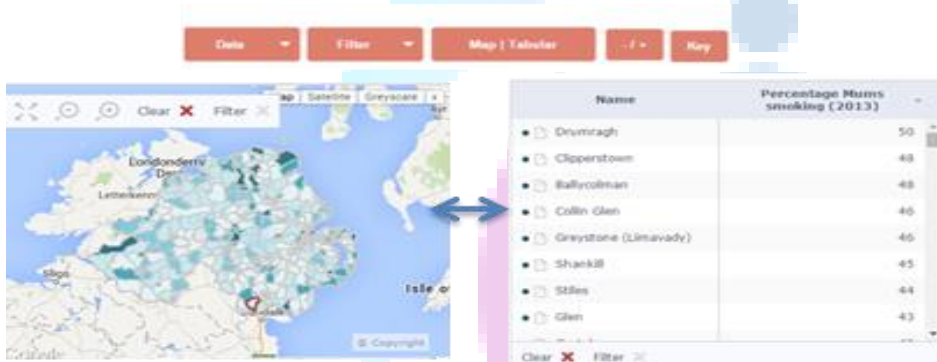
Filter button – Select to Filter information by:

- Local Government District
- CYPSP Outcomes Groups
- CYPSP Locality Planning Groups
- Family Support Hubs
- Urban / Rural
- Sure Start



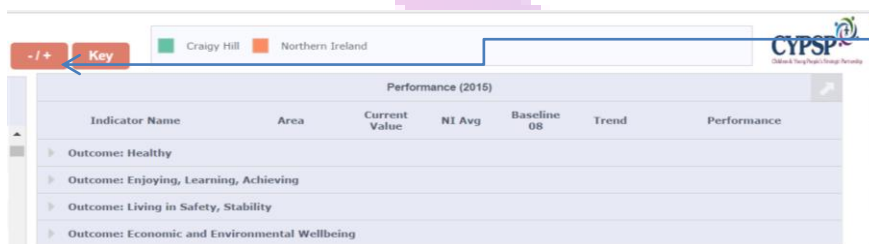
Key buttons –
Explanation of symbols

Figure 16 – Performance Profile Key Buttons



Map/Tabular button –
to change Map Panel
to Data table to view
list of wards. (see
below)

Figure 17 – Performance Profile Map/Tabular Button




-/+ button – to maximise or
minimise indicators under
each High Level Outcome
within the performance table.
(see above)

Figure 18 – Performance Profile -/+ Button

Performance Table

- / +
Key

■ Craigy Hill
 ■ Northern Ireland



Performance (2015)						
Indicator Name	Area	Current Value	NI Avg	Baseline 08	Trend	Performance
Outcome: Healthy						
Percentage Mums smoking (2014)	Craigy Hill	29 ●	15	20	↑	0
	Northern Ireland	15 ●	15	18	↓	0
Percentage Mums who breastfed at Hospital Discharge (2015)	Craigy Hill	43.8 ●	45.5	13.3	↑	0
	Northern Ireland	45.5 ●	45.5	42.2	↑	0
Children with a Disability in receipt DLA 0-15 yrs R1000 (2015)	Craigy Hill	129.9 ●	48.4	50	↑	0
	Northern Ireland	48.4 ●	48.4	32.1	↑	0
Percentage Dental Registrations Aged 0-2 yrs (2014)	Craigy Hill	16.3 ●	28.6	36.2	↓	0
	Northern Ireland	28.6 ●	28.6	26.3	↑	0
Percentage Dental Registrations Aged 3-5 yrs (2014)	Craigy Hill	71.4 ●	73.6	68.6	↑	0
	Northern Ireland	73.6 ●	73.6	61.2	↑	0

Figure 19 – Performance Table

Indicator: List of Indicators under each High Level Outcome – Automatically appear. To change indicator you can also click on specific indicators in the performance table.

Area: Filter to the appropriate area by Ward, Outcomes Level or Northern Ireland Level – You can compare up to 7 areas at a time.

Value: Displays the current value of the indicators as a Percentage % or Rate per 1,000.

N.I Average: Displayed Northern Ireland Average each indicator to compare against the current value.

Baseline: Baseline is set at 2008 to compare against the most recent data i.e. *Value column*

Trend: Trend arrow is either displayed in red or green point up / down to show whether the information from the base line is getting better or worse. If you hover over the arrow it displays the trend.

Performance: Compare the data against the NI Average using comparative formula whether the data value is better or worse than the NI Average within the appropriate year.

Notes:

Disclaimer:

Please note that the user guide, Instant Atlas Template and associated datasets are liable to be updated in the future and therefore this guide may become obsolete. The project will endeavour to update this guide and any associated literature on the event of further changes yet cannot be held responsible if this does not happen.

www.cypsp.org