

TOTAL REGIONAL
MEMBERS
1028

REGIONAL RESPONSES
303 | 29.5%

RESPONSE LEVELS

BELFAST	102	33.6%
NORTHERN	97	32%
SOUTHERN	102	33.6%
SOUTH EASTERN	50	16.5%
WESTERN	75	24.7%

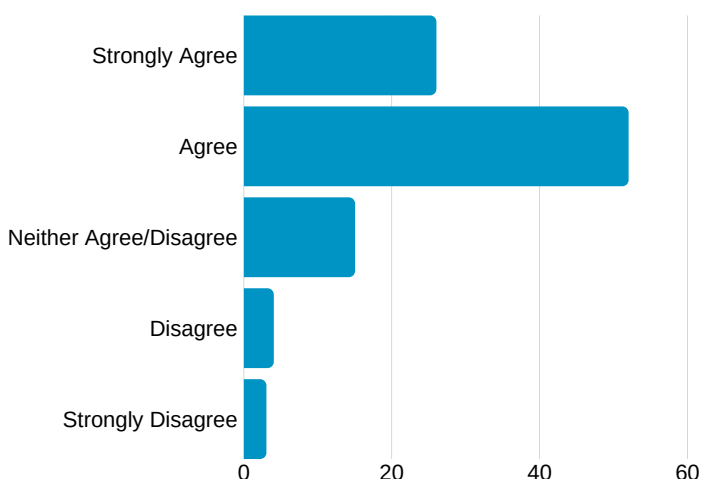
BELFAST LPG RESPONSES



NORTH	27
SOUTH	29
EAST	24
WEST	22

*Actual total = 79 (members may be in more than one group)

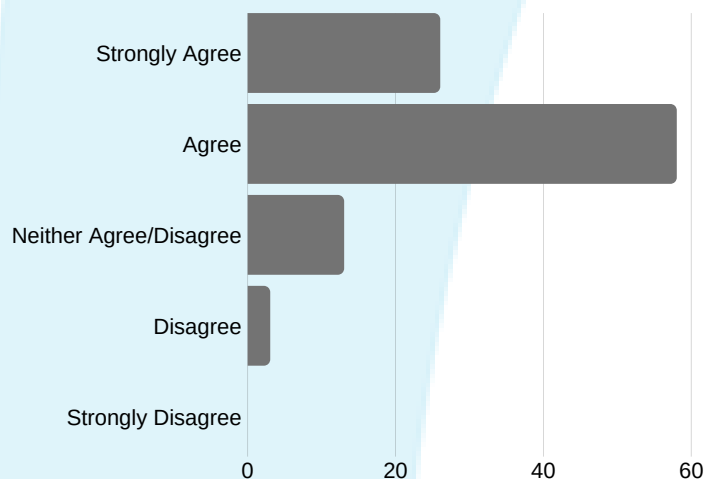
Have LPGs helped identify the service gaps in the locality?



- Yes has identified unmet need
- Disability and lack of services particularly for children and young people with autism and their families is a priority and the LPG has been a forum for bringing these gaps to the fore.
- been extremely useful in picking up gaps

Have LPGs improved information sharing, communication, and trust across the organisations in the locality?

- A lot of Forums/Networks already existed in the area but the LPG has been a useful addition related to the theme of families.
- more people seem to be in agreement about what needs to be done and seem willing to work as best they can to fill in these gaps
- Partner organisations are working together on areas and events that would not have been the case prior to the structure. It is forming communication and shaping services including those funded regionally



70%

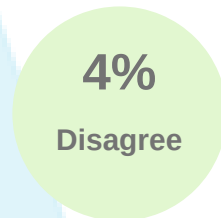
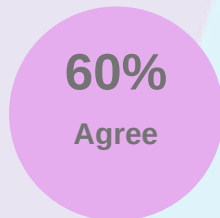
LPG respondents said there was increased co-operation and collaboration across organisations in the locality



“ There is a greater tendency for groups to reach out now and work with each other. Forums that bring groups together lend themselves to collaborative working. LPG is one of those forums. ”

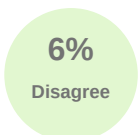
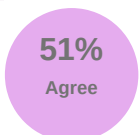
Respondents said there was increased focus on early intervention and prevention in the locality

78%



Respondents said it had given them a greater understanding of the needs of children and families.

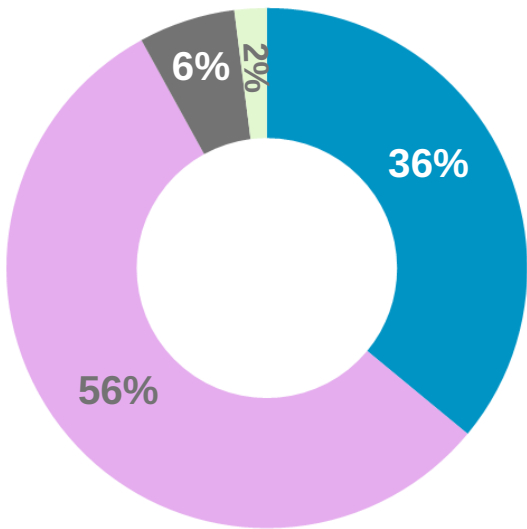
72%



“ The discussions at the LPG are useful for highlighting issues in the area that we would not be aware of. ”

92%

Respondents said it had increased their knowledge of the availability of services in the locality



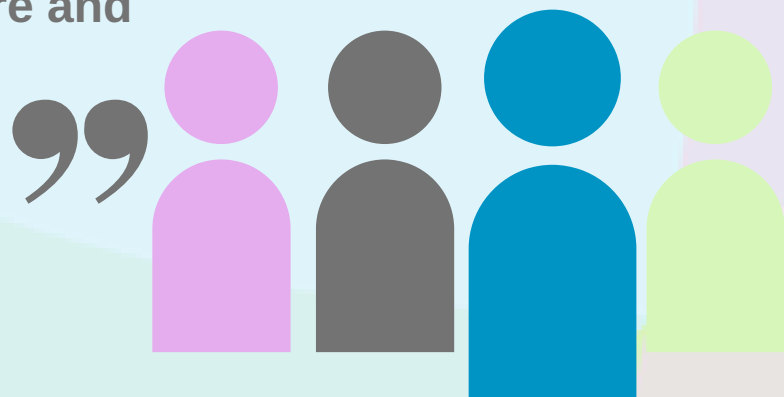
- Strongly Agree
- Agree
- Neither Agree/Disagree
- Strongly Disagree

“ I think it is one of the best groups that I attend strategically in my work. ”

54%

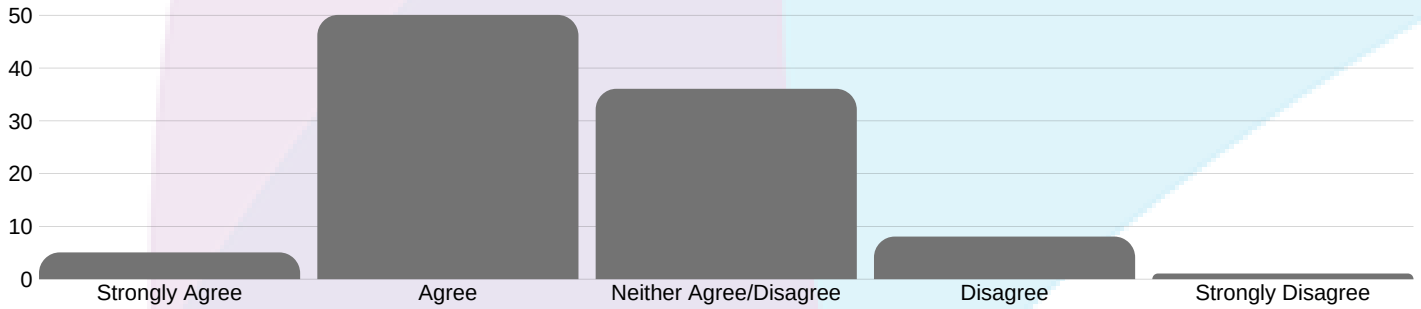
LPG respondents said it led to greater involvement of service users and the wider community in addressing planning needs

“ A new project addressing Poverty has resulted from LPG. .. the co operation and organising of this group has led to improved services for families providing continuity of care and services. ”



55%

Respondents said it had reduced the likelihood of duplication of service provision in the locality



5%
Strongly Agree

50%
Agree

36%
Neither Agree/Disagree

8%
Disagree

1%
Strongly Disagree



81%

Respondents said LPGs increased the likelihood of improved outcomes for children and families

“ As members we all feed into the group providing feedback on our needs and gaps, thus helping to shape new services and therefore increasing improved outcomes for children. ”

93%



Respondents felt that the geographical area covered by the Locality Planning Group they attend is the right fit