

# Children's Autism Services

- Background
- Demand and Delivery
- Children's Assessment and Support Service (CASS) – pre diagnosis
- Assessment Service - diagnostics
- Autism Intervention Team (AIT) - post diagnostics
- Challenges and opportunities

# Autism background

- **2008-2009:** Independent review of Autism services (Lord Maginnis) found that demand > capacity.
- **2010:** The regional ASD Network including Trusts, departments and carers initiated to define ASD care and '6 steps'.
- **2011:** Autism Act including increased awareness of ASD and widening of 'referral door'. Limited new investment received.

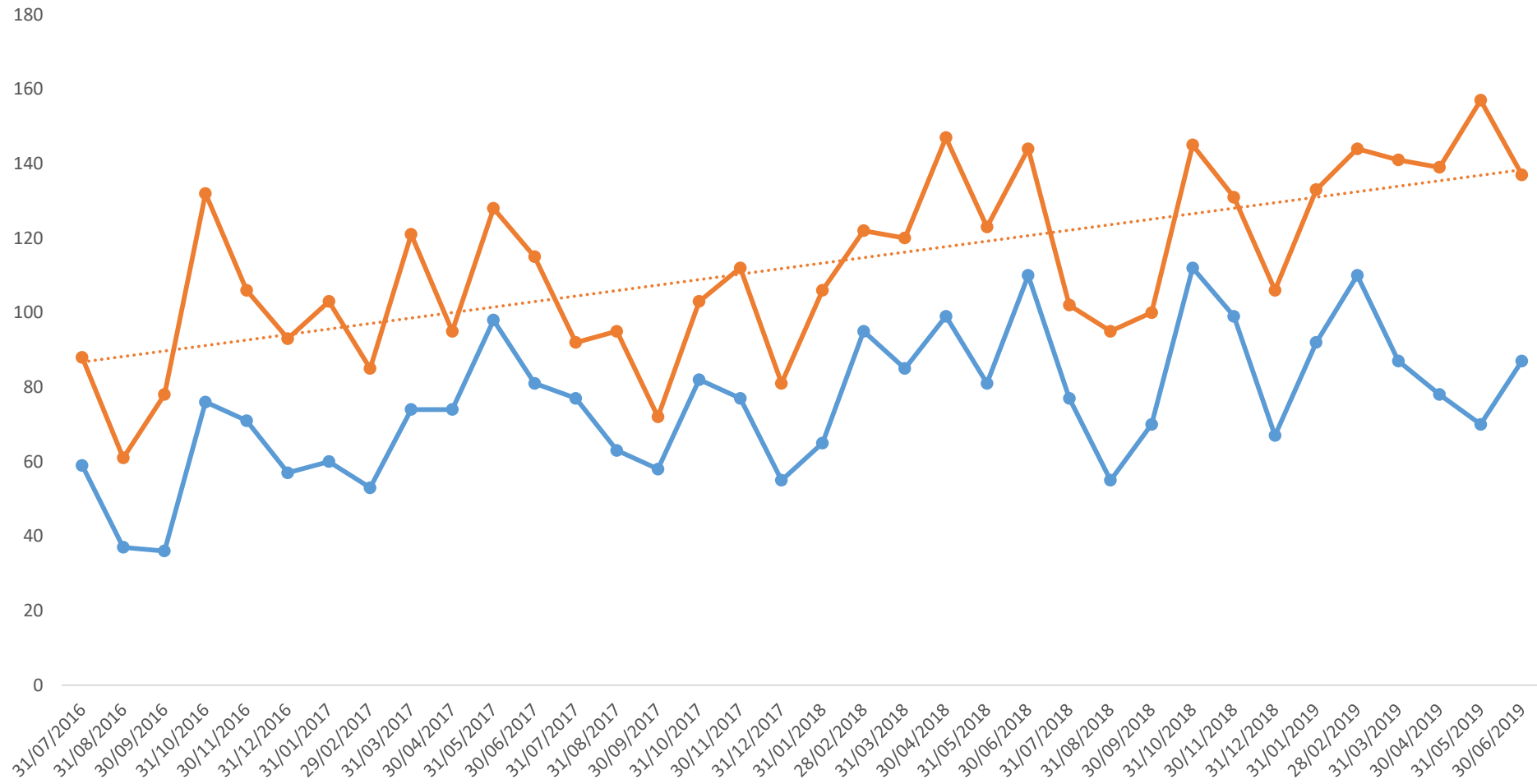
## New capacity of 312 assessments per year.

- **2011/12:** 376 new children added to WL. No new recurrent investment therefore **cumulative WL growth of +64**
- **2012/13:** 490 new children added to WL. No new recurrent investment therefore **cumulative WL growth +242**
- **2013/14:** 533 new children added to WL. No new recurrent investment therefore **cumulative WL growth +463**
- **2014/15:** 649 new children added to WL. No new recurrent investment therefore **cumulative WL growth +800**
- **2016/17:** 650 new children added to WL. **£100k invested for Early intervention services and £419 invested for ASD services.**

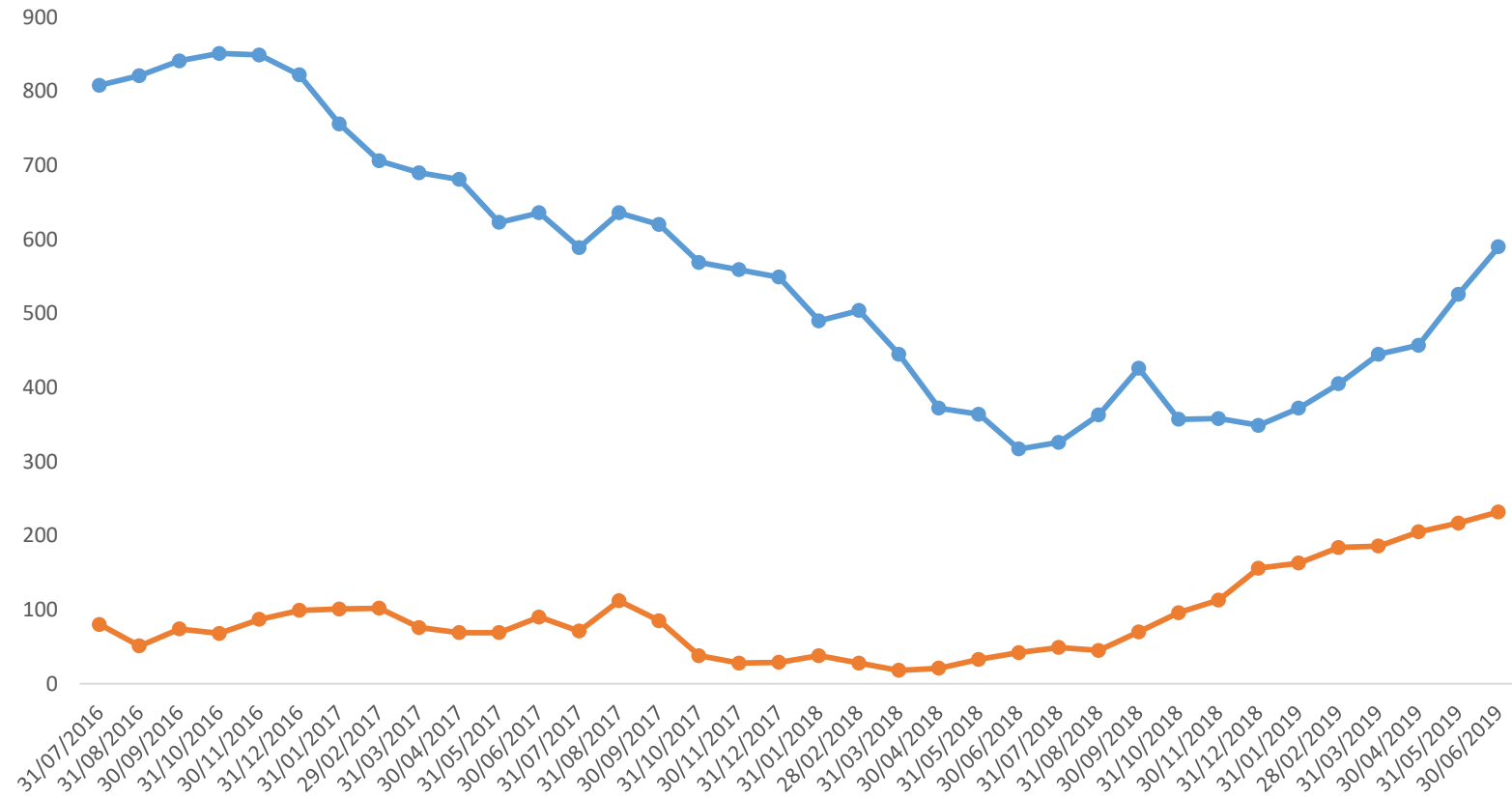
## Source of Diagnostic Referrals (Received)

Ref source	16/17		17/18		18/19		19/20		Total	%
	Total	%	Total	%	Total	%	Total	%		
<b>Source of Diagnostic Referrals (Received)</b>										
<b>CAMHS</b>	54	6	103	8	131	9	42	10	<b>330</b>	<b>8</b>
<b>Core AHP Services</b>	81	9	126	10	151	10	41	9	<b>399</b>	<b>10</b>
<b>Core Paediatrics</b>	170	20	267	22	380	25	112	26	<b>929</b>	<b>23</b>
<b>Education</b>	46	5	62	5	83	5	15	3	<b>206</b>	<b>5</b>
<b>Families</b>	2	0	3	0	2	0	0	0	<b>7</b>	<b>0</b>
<b>General Practitioner</b>	350	40	415	33	520	34	144	33	<b>1429</b>	<b>35</b>
<b>Community Nursing</b>	150	17	217	17	206	14	61	14	<b>634</b>	<b>16</b>
<b>Multidisciplinary Teams</b>	13	1	36	3	31	2	9	2	<b>89</b>	<b>2</b>
<b>Social Services</b>	1	0	12	1	7	0	9	2	<b>29</b>	<b>1</b>
<b>Total All Sources</b>	<b>867</b>	<b>100</b>	<b>1241</b>	<b>100</b>	<b>1511</b>	<b>100</b>	<b>433</b>	<b>100</b>	<b>4052</b>	<b>100</b>
<b>Av per month</b>	<b>96</b>		<b>103</b>		<b>126</b>		<b>144</b>			

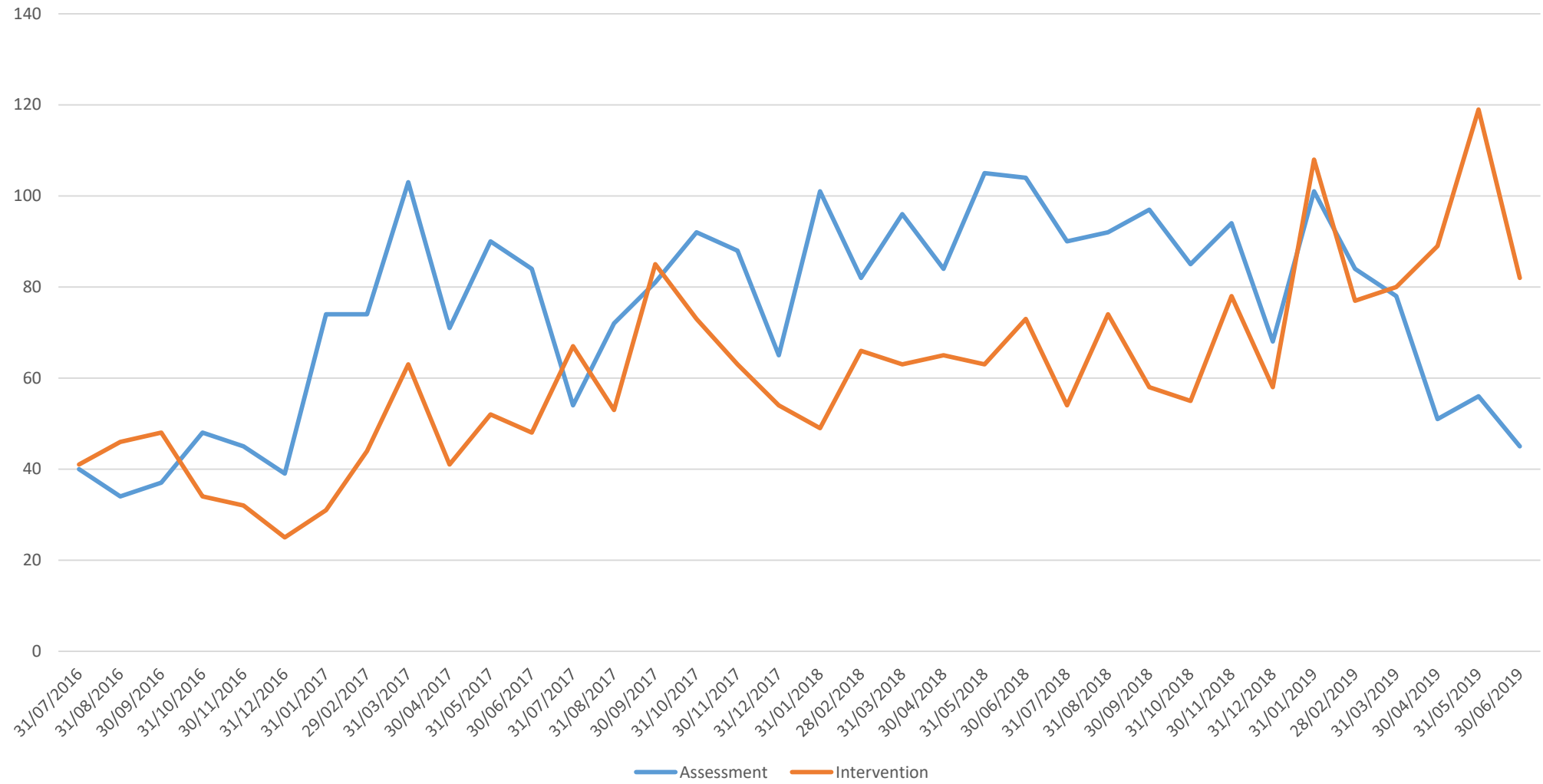
ASD Assessment Referrals Received and Accepted



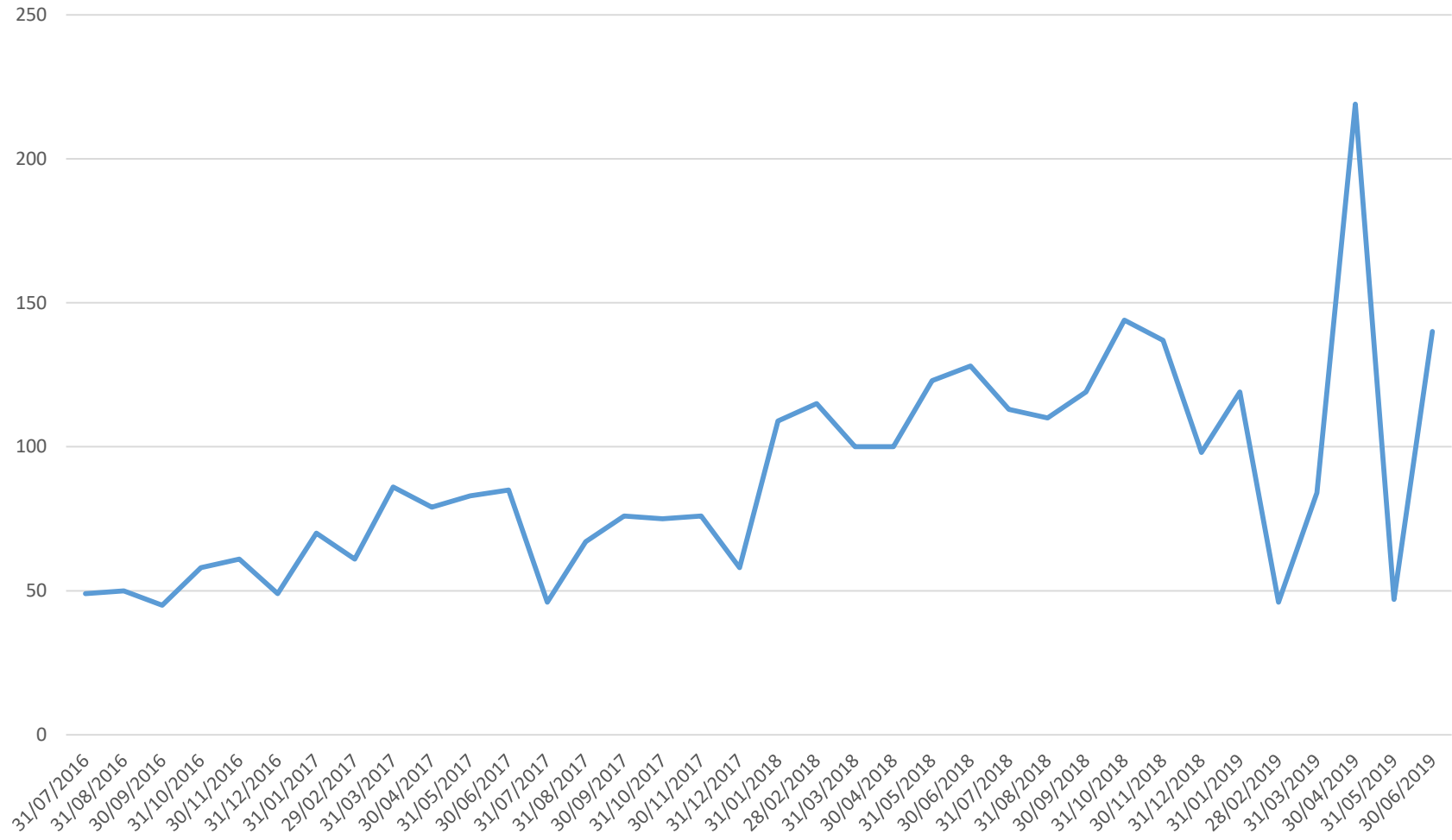
No. of Children waiting 13 weeks+ for ASD **Assessment** and **Intervention**



### First Contact Activity for Assessment and Intervention



ASD Intervention Referrals Received



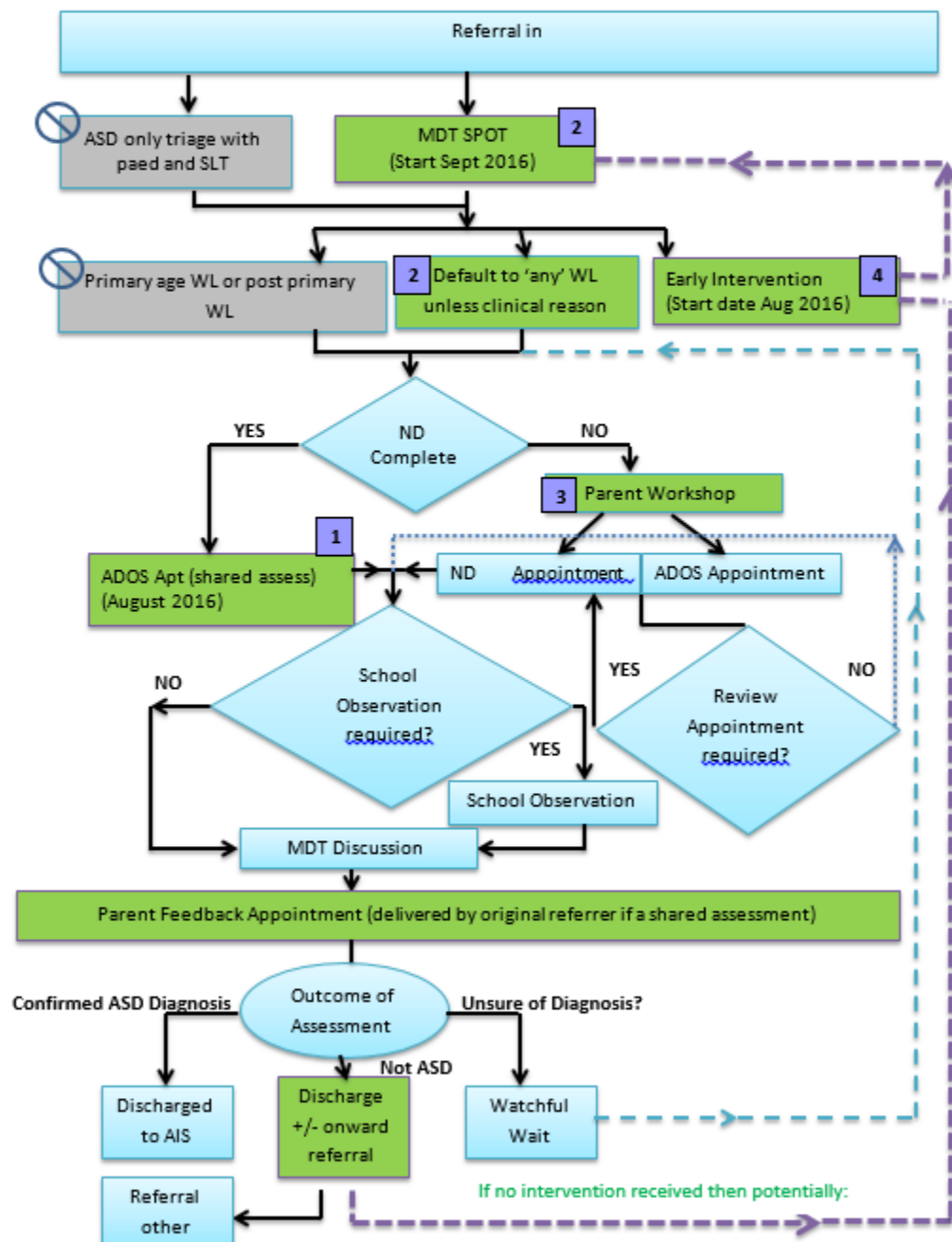
# CASS Objective

To support existing teams gather and analyse information for children under 6 years where there is a query of possible of ASD, which is complicated by the child's experience of trauma or attachment.

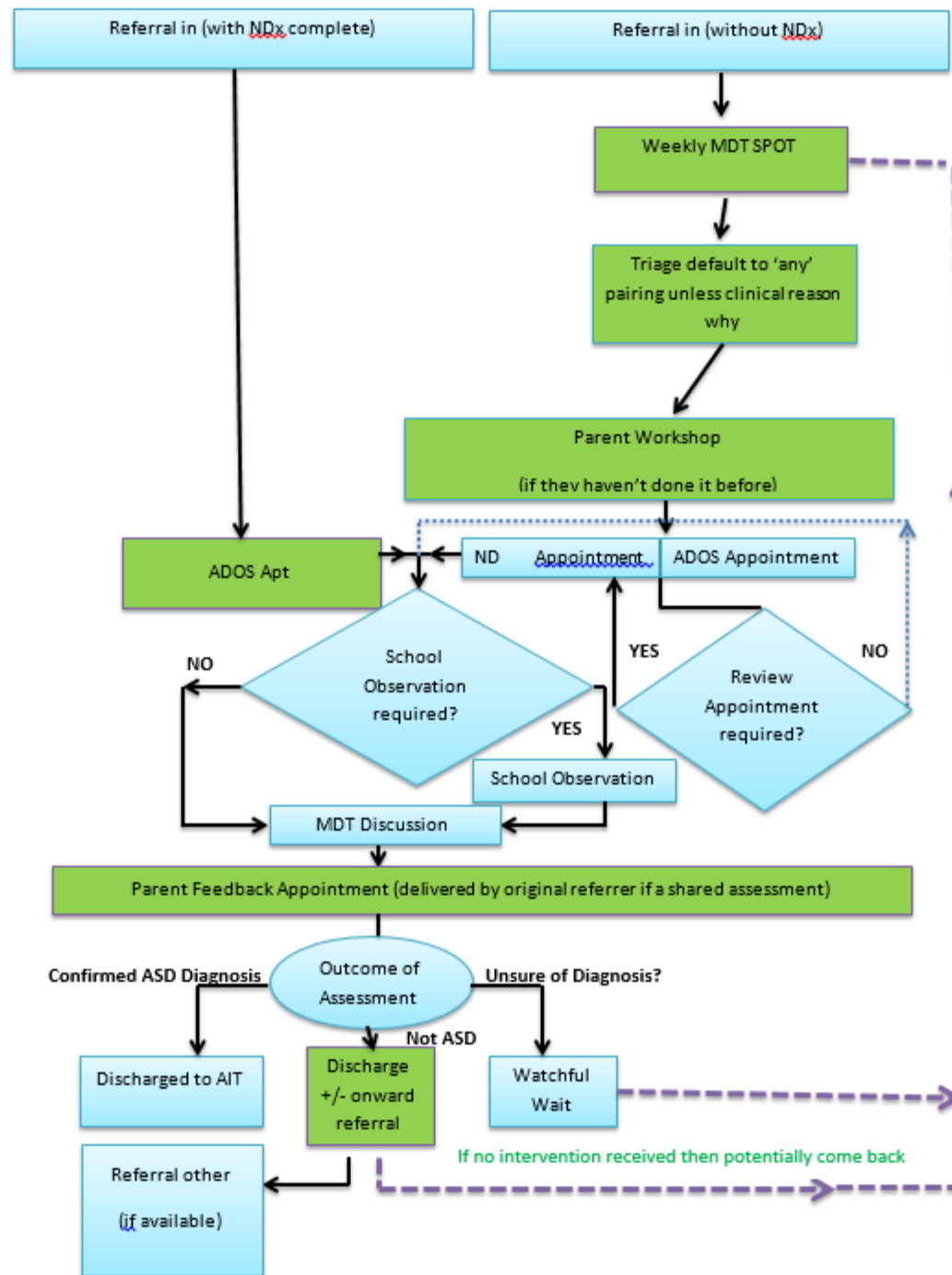
# How do CASS do this?

Promotion of positive psychological wellbeing of children by reducing family distress and enhancing the capabilities of parents and other professionals to understand and manage the child's presenting difficulties through:

1. Consultation with other professionals.
2. Direct and Indirect assessment and where indicated, and time limited intervention.
3. Training for Trust and Community Staff.



ASD Assessment Flow Chart (06/12/18)



# Autism Intervention Services - Solution to Previously Fragmented Model.

- All professions and agencies together and create a team with one point of referral and one central waiting list
- Co-ordinate services so that children aren't sitting on multiple waiting lists
- Stepped Care Model
- Multi-disciplinary and multi-agency
- Different levels of workshops – basic and advanced
- Workshops available across the Trust in mornings and evenings in local communities

# Autism Intervention Service – expanding capacity

No. of Patients

## Step 1: Psychoeducation

- Parent Workshops: Core Training on ASD
- Home training
- Multidisciplinary and age specific

## Step 2: Assessment and Support

- Preliminary Assessment/Identifying Needs
- Support in the Community for Self-Management

## Step 3: Home Intervention and Advanced Training

- Home Intervention with an AIA or AIT
- Multidisciplinary and Multi-Agency
- Level 2 Training: Sleep, Toilet Difficulties, Feeding...
- Groups: CLASS Program, OT group

## Step 4: Specialist Intervention

- Clinical Psychology and CAMHS
- AHPs: Speech and Language Therapy, Occupational Therapy
- Forward Steps, Fledglings and Cedar

Intensity

# Parent Workshops



1. Core Workshops
2. Positive Behaviour Management
3. Make and Take Sessions
4. Sleep Issues in Autism
5. Telling Your Child About Their Diagnosis
6. Anxiety Management
7. Managing Difficult Emotions
8. Summer Survival Strategies
9. Toilet Issues in Autism
10. Feeding Issues in Autism
11. Puberty and Autism

# What's next?

## Challenges

- ASD Assx demand increasing
- ASD Intervention demand increasing
- Refs with attachment/trauma/ACES increasing
- Skills shortages

## Opportunities

- EH&WB Framework
- Investment into early intervention
- Better coordination with other key stakeholders
- Better use of information and available resources
- Single point of entry

## Co-Production with relevant stakeholders

