

SEND Strategic Development Programme - Context

- DE 'Way Forward for Special Educational Needs & Inclusion' 2009;
- SEND Act passed by NI Assembly 2016;
- NIAO SEN Report 2017 & DE Programme established;
- EA Statutory Assessment audit of practice 2019;
- EA Statutory Operations Improvement Project 2020;
- NICCY 'Too Little, Too Late' 2020;
- **SEND SDP initiated 2020;**
- NIAO SEN Impact Report 2020;
- SEN Act regulations and Code of Practice consultation underway 2020;
- PAC hearings 2020;
- DE SEN Learner Journey Report 2021.

150+ recommendations to be addressed in addition to SEND Act implementation.

SEND Strategic Development Programme - Context

Why a Programme Approach?

Multiple projects already underway across different agencies, more projects & resource will be required, stakeholder engagement critical and all needs to be joined up.

What will it deliver?

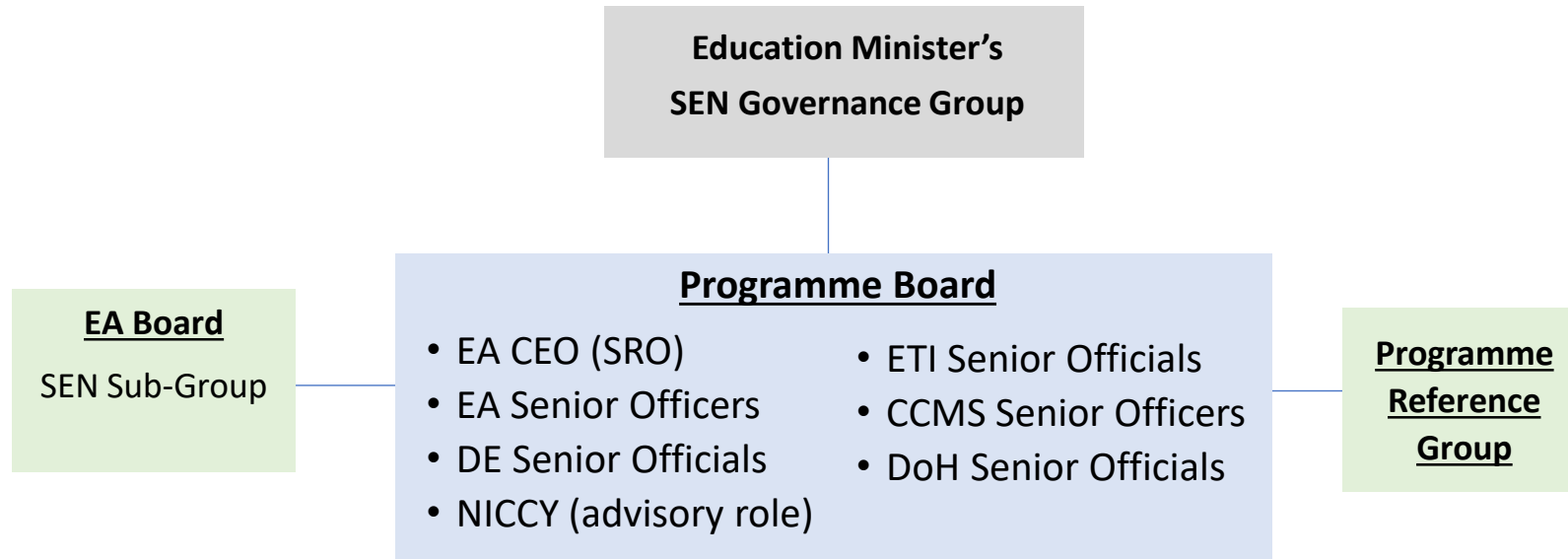
- A clear, common strategic direction – bridging siloes;
- Better prioritisation, sequencing and focus on strategic outcomes;
- Partnership with stakeholders.

SEND SDP Vision & Outcomes

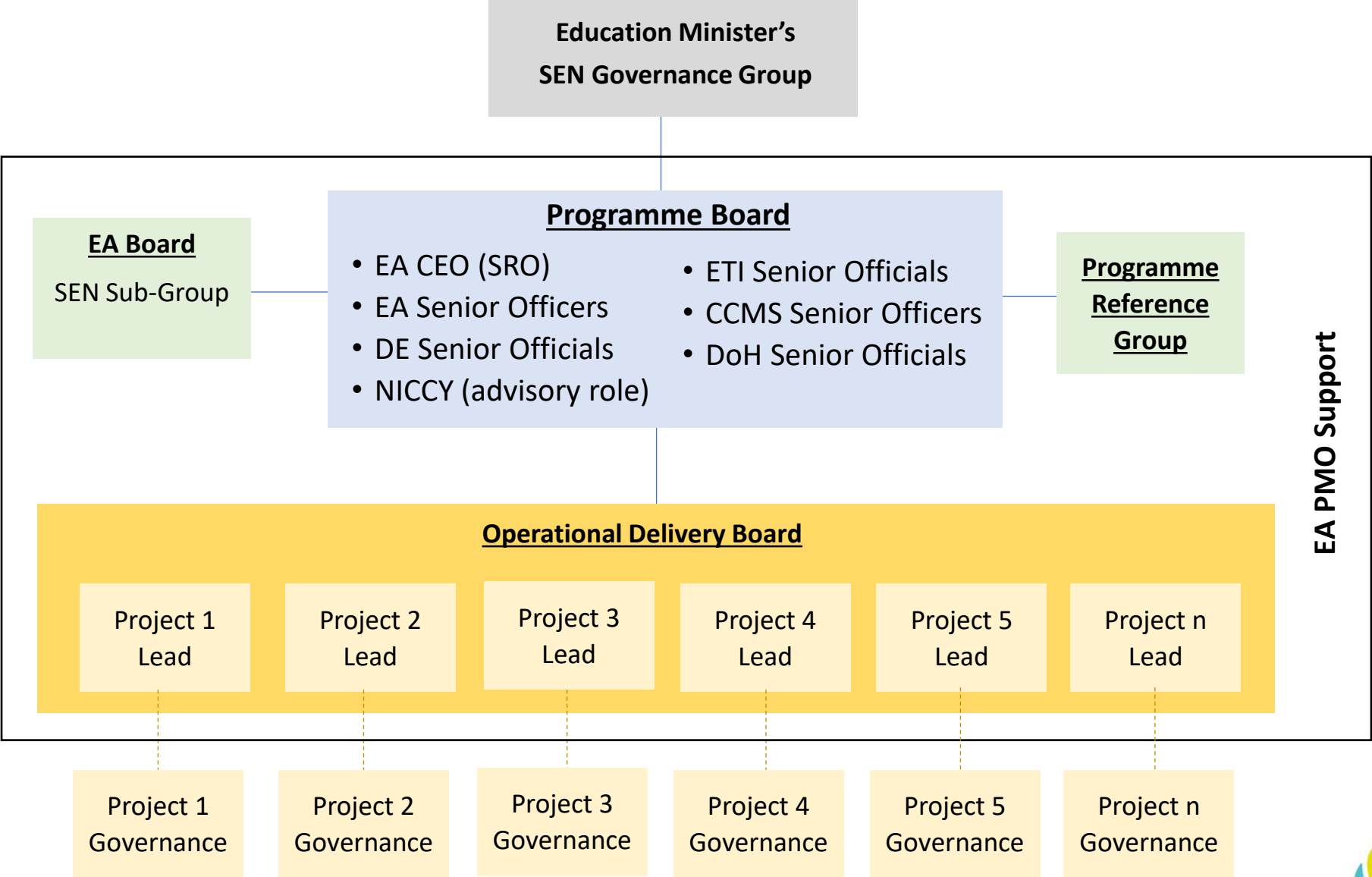
All children and young people with special educational needs or disabilities and their families are receiving the tailored and effective supports that they need to secure the best educational outcomes, delivered by a child-focused, responsive, co-ordinated, transparent, efficient and sustainable system.

- 1) All schools & pre-school settings can access the necessary services and resources to provide the right SEND supports at the earliest possible point for all children who need them;
- 2) Statutory assessment is leading to the right additional SEND supports being delivered at the right time in the right setting;
- 3) Parents/carers understand, engage fully with and are getting the right support from the SEND system at the right time;
- 4) SEND stakeholders have a shared sense of ownership and confidence in the system.

SEND SDP Governance



SEND SDP Governance



SEND SDP – Initial PRG Membership

- Early Years
- Children’s Law Centre
- Parenting NI
- Parentkind
- Autism NI
- National Children’s Bureau NI
- Royal College of Child Health & Paediatrics
- SEN Advice Centre
(also representing Children with Disabilities Strategic Alliance)
- Controlled Schools’ Support Council
- Council for Integrated Education
- Comhairle na Gaelscolaiochta
- Governing Bodies Association NI
- Council for the Curriculum, Examinations and Assessment
- Catholic Schools’ Trustee Service
- Transferor Representatives’ Council
- Safeguarding Board NI
(invitation recently issued)

SEND SDP – Proposal on First Wave Projects (18-24 mths)

1.1 SEND Act Regs & CoP <i>(DE Lead)</i>	1.9 Development of an Integrated Multi-Disciplinary Model of Pupil Support Services <i>(EA Lead)</i>
1.2 SEND Act Operationalisation <i>(EA Lead)</i>	1.10 Consolidating the Employment Model for Adult Assistants <i>(EA Lead)</i>
1.3 SEND Act Workload Review <i>(DE Lead)</i>	1.11 School-Based Innovation In Supporting Learning <i>(EA Lead)</i>
1.4 Statutory Operations Improvement Project <i>(EA Lead)</i>	1.12 Review of Multi-Disciplinary Working <i>(DE Lead)</i>
1.5 SEN Area Planning Frameworks <i>(DE/EA Lead)</i>	1.13 Review of Exclusions <i>(DE Lead)</i>
1.6 SEN Placement Planning Project <i>(EA Lead)</i>	1.14 Transitions Project <i>(DE Lead)</i>
1.7 SEN Early Years Framework <i>(EA Lead)</i>	1.15 ETI Evaluation Phase 2 <i>(ETI Lead)</i>
1.8 Educational Psychology Service Model Review <i>(EA Lead)</i>	

SEND SDP – What Next?

- **What is the read across for CYPSP?**
- **How do we join the dots going forward?**