

TOTAL REGIONAL MEMBERS
1028

REGIONAL RESPONSES
303 | 29.5%

RESPONSE LEVELS		
BELFAST	102	33.6%
NORTHERN	97	32%
SOUTHERN	102	33.6%
SOUTH EASTERN	50	16.5%
WESTERN	75	24.7%

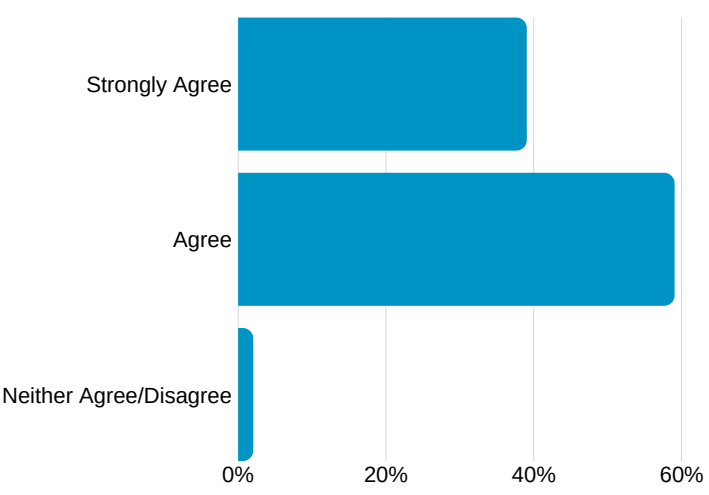
SOUTH EASTERN LPG RESPONSES



Ards & North Down	19
Colin	7
Down	16
Early Intervention Lisburn	8

*Actual total = 45 (members may be in more than one group)

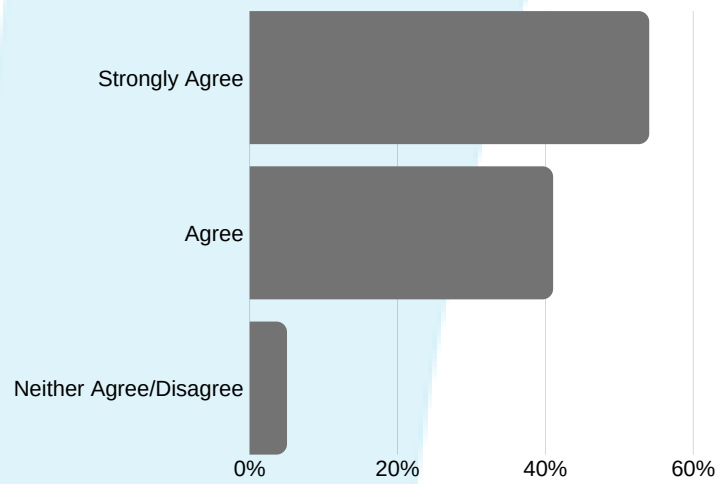
Have LPGs helped identify the service gaps in the locality?



- Very passionate and dedicated to improving the lives of those in the community
- We are a small organisation and the group allows us to have a voice in the area, discuss needs and share information about the work that we are carrying out.

Have LPGs improved information sharing, communication, and trust across the organisations in the locality?

- the locality planning groups allow individuals working in a similar field the opportunity to discuss emerging trends, themes, and spend time together to get to know each other's work areas better so as to better inform how we work with & engage with families.
- Without locality planning we wouldn't get the opportunity to meet with such a mix of professionals such as school principles, youth workers, council staff and volunteers and community providers we have been excellent links via locality planning.



95%

LPG respondents said there was increased co-operation and collaboration across organisations in the locality

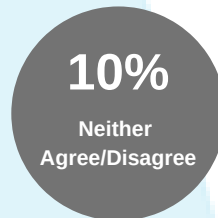
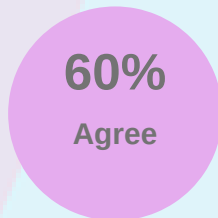


There's a strong culture of collaboration within the LPG across a range of areas, including learning and funding issues.



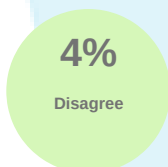
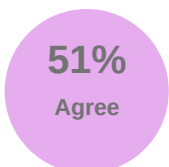
Respondents said there was increased focus on early intervention and prevention in the locality

90%



Respondents said it had given them a greater understanding of the needs of children and families.

86%

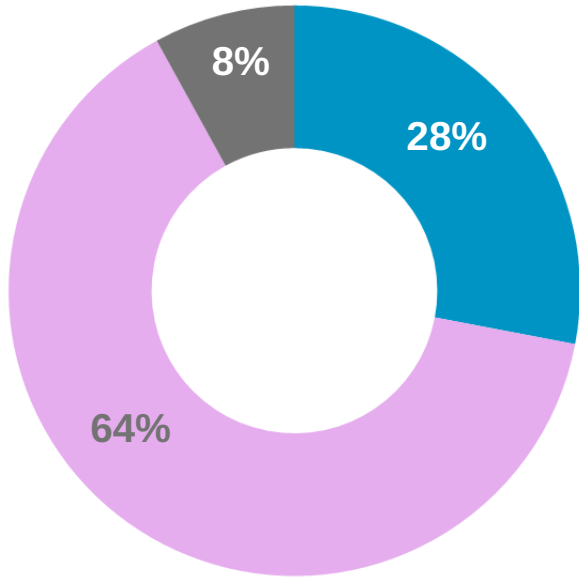


The planning group has been productive and important to share information of the issues within our community and how we can plan to support children, young people and their families



92%

Respondents said it had increased their knowledge of the availability of services in the locality



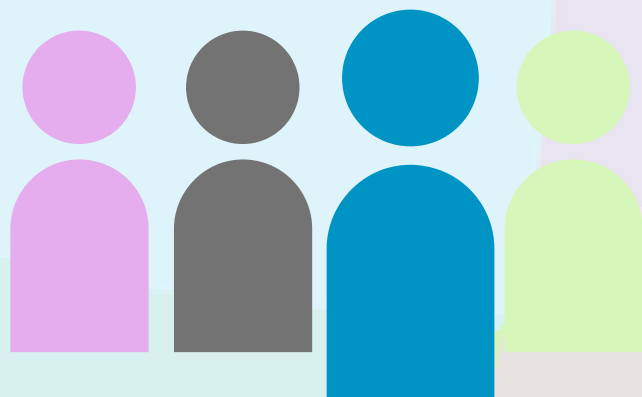
- Strongly Agree
- Agree
- Neither Agree/Disagree

“ This is one of the most mature groups I have sat on - the best working partnership that is delivering results for our communities! ”

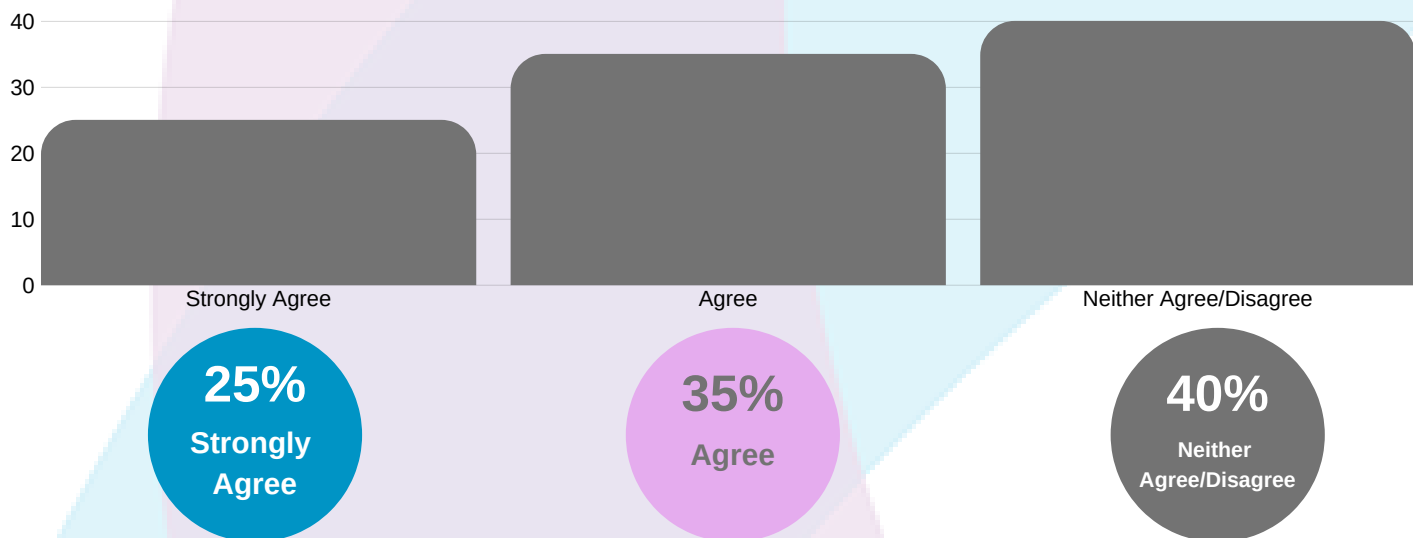
54%

LPG respondents said it led to greater involvement of service users and the wider community in addressing planning needs

“ I believe these planning groups are vital in supporting all children and families within our community and promoting positive outcomes within those communities ”



60% Respondents said it had reduced the likelihood of duplication of service provision in the locality



95%

Respondents said LPGs increased the likelihood of improved outcomes for children and families

“ ... has been a significant driver for developing excellent partnerships, identifying gaps and effective collaborative working which I believe is making a significant improvement in outcomes for children. ”

95%

Respondents felt that the geographical area covered by the Locality Planning Group they attend is the right fit