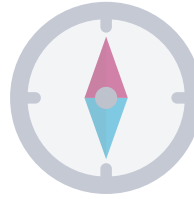


TOTAL REGIONAL MEMBERS
1028

REGIONAL RESPONSES
303 | 29.5%

RESPONSE LEVELS		
BELFAST	102	33.6%
NORTHERN	97	32%
SOUTHERN	102	33.6%
SOUTH EASTERN	50	16.5%
WESTERN	75	24.7%

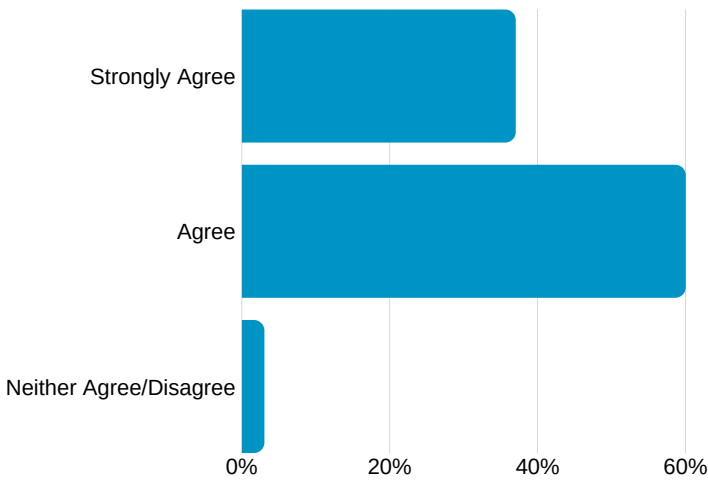
SOUTHERN LPG RESPONSES



Armagh	20
Banbridge	15
Craigavon	20
Dungannon	14
Newry	21
South Armagh	11

*Actual total = 66 (members may be in more than one group)

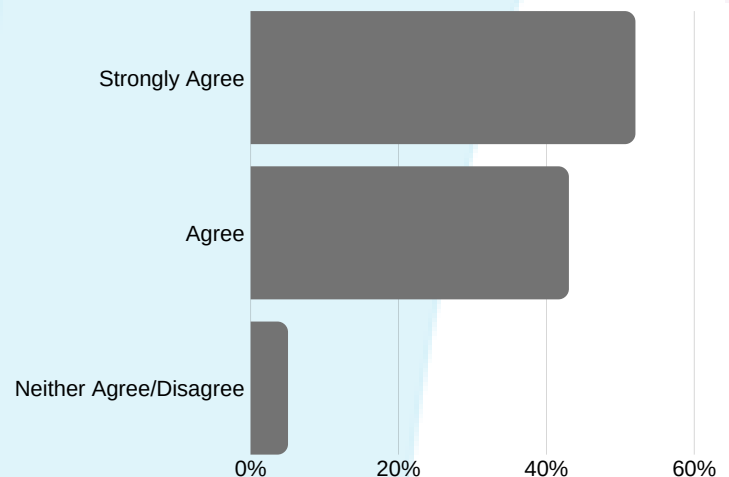
Have LPGs helped identify the service gaps in the locality?



- The LPGs have representatives from a range of different organisations feeding into identifying the issues and gaps.
- Shared information allows us back up notions we have from feedback within our own service on a wider practice base with reps. from other agencies who may see much the same as our selves offering confirmation or may be able to advise on things we have not seen.

Have LPGs improved information sharing, communication, and trust across the organisations in the locality?

- Through continued meetings and information sharing the LPG has improved information sharing, as we are all round the same table. The meetings allow each organisation to update on what they are delivering and provides that vital link.
- The LPG has enabled new relationships between statutory, voluntary and private sector organisations working in the area and has also strengthened existing relationships which promotes information and ultimately real collaborative working



91%

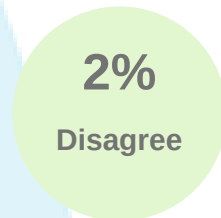
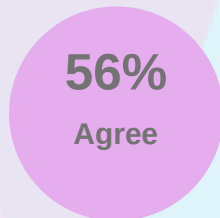
LPG respondents said there was increased co-operation and collaboration across organisations in the locality



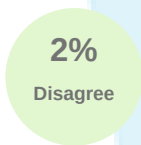
I totally agree we have delivered joint initiatives as a result of collaboration and cooperation built through locality planning, expertise has been shared and resources pooled in order to get the best outcomes for children in the area.



Respondents said there was increased focus on early intervention and prevention in the locality **83%**



Respondents said it had given them a greater understanding of the needs of children and families. **76%**

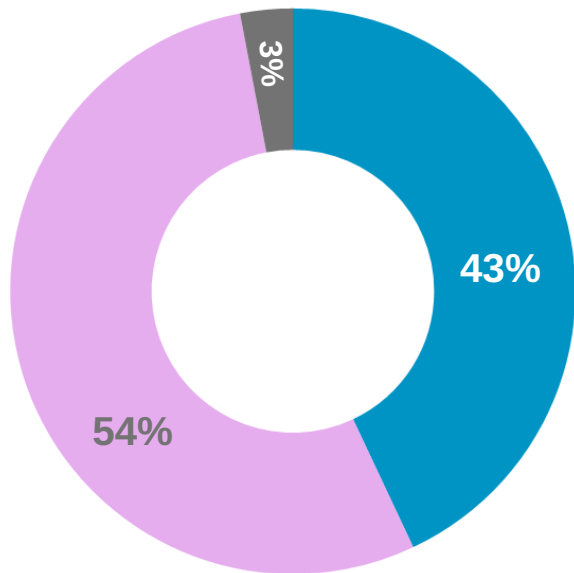


I hear from other organisations, some working with younger children and/or with parents that give me a more holistic view of what teenagers might be experiencing in the locality



97%

Respondents said it had increased their knowledge of the availability of services in the locality



- Strongly Agree
- Agree
- Neither Agree/Disagree



“

There is a wide variety of individuals sharing information which helps to ensure that all service gaps are noted not just one or two larger organisations

”

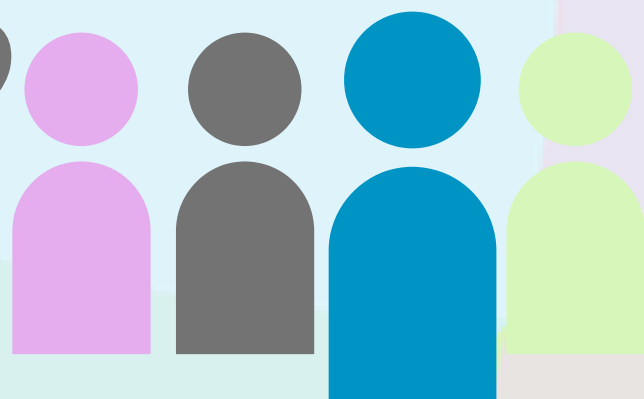
62%

LPG respondents said it led to greater involvement of service users and the wider community in addressing planning needs

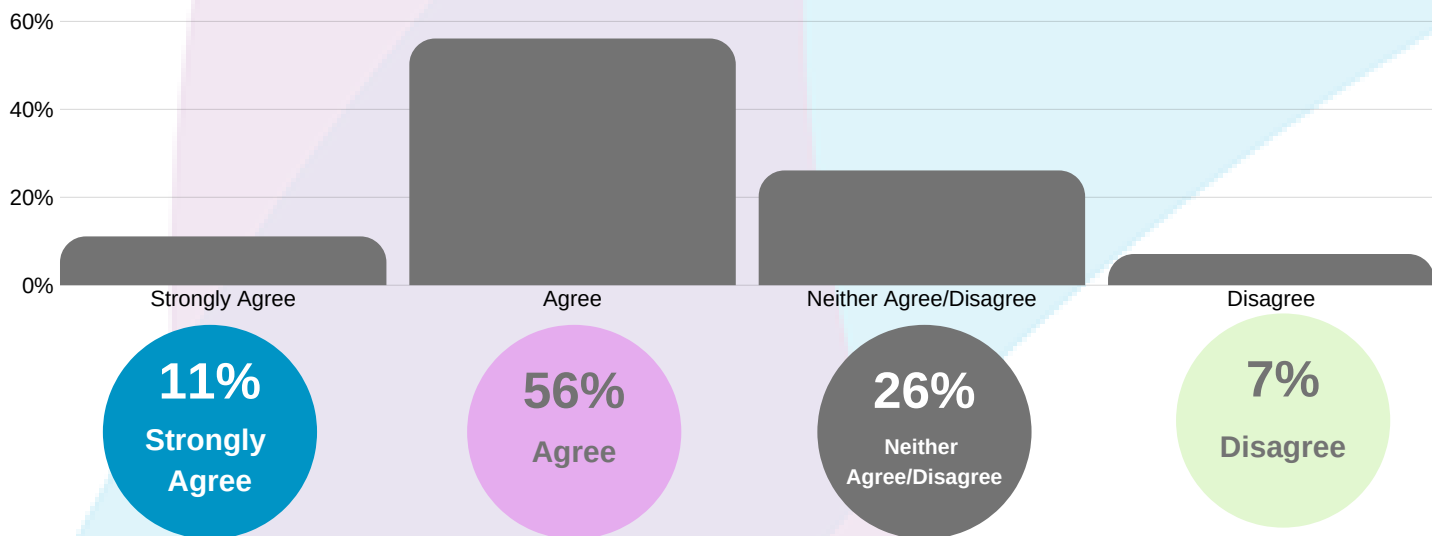
“

The Young Minds Matter conference was a perfect example of how service users got involved in a community wide initiative on positive mental health.

”



67% Respondents said it had reduced the likelihood of duplication of service provision in the locality



91%

Respondents said LPGs increased the likelihood of improved outcomes for children and families

“

It is through all the organisations working together for the benefit on the families and children in the area that improved outcomes happen.

”

82%

Respondents felt that the geographical area covered by the Locality Planning Group they attend is the right fit