

TOTAL REGIONAL MEMBERS  
**1028**

REGIONAL RESPONSES  
**303 | 29.5%**

RESPONSE LEVELS		
BELFAST	102	33.6%
NORTHERN	97	32%
SOUTHERN	102	33.6%
SOUTH EASTERN	50	16.5%
WESTERN	75	24.7%

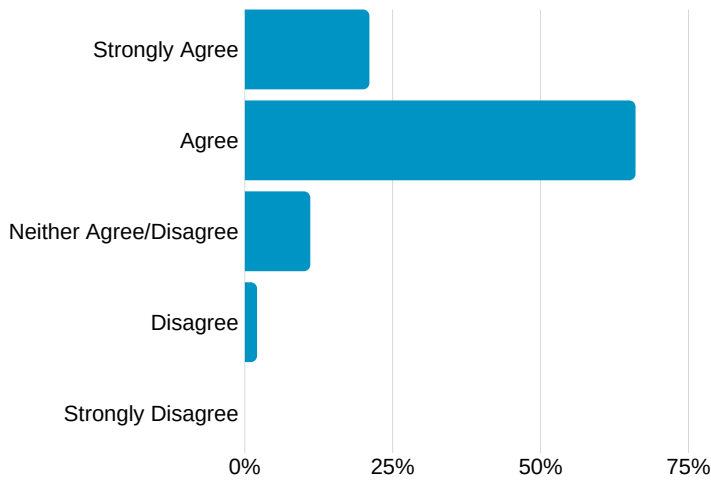


WESTERN LPG RESPONSES

Derry	21
Limavady	9
Strabane	13
Waterside	5
Fermanagh	12
Omagh	11

\*Actual total = 53 (members may be in more than one group)

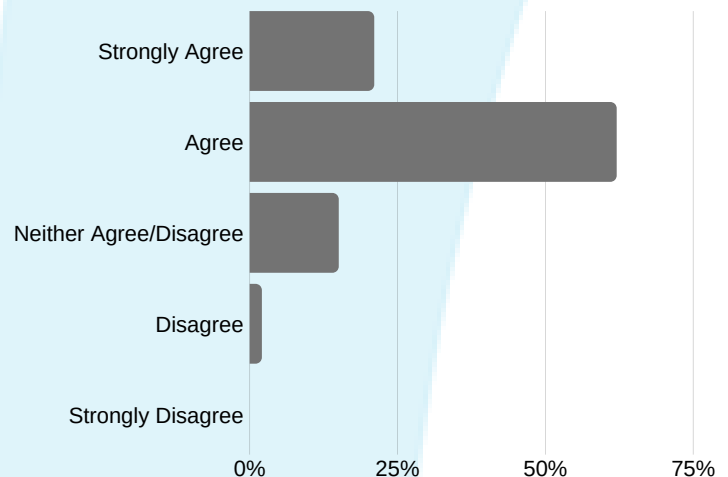
Have LPGs helped identify the service gaps in the locality?



- Unique opportunity for groups to consider gaps in provision
- The Locality Planning Group members share views and information in relation to existing services and emerging needs.

Have LPGs improved information sharing, communication, and trust across the organisations in the locality?

- The Locality Planning Group is a conduit that helps disseminate important information to a number of agencies and community and voluntary groups
- Great networking and inter-service planning



# 71%

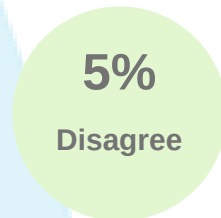
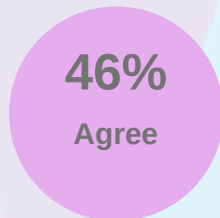
LPG respondents said there was increased co-operation and collaboration across organisations in the locality



“ It helps to foster relationships which can only help to improve services and co-operation and collaboration. ”

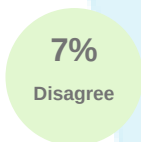
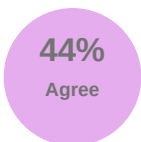
Respondents said there was increased focus on early intervention and prevention in the locality

# 67%



Respondents said it had given them a greater understanding of the needs of children and families.

# 70%

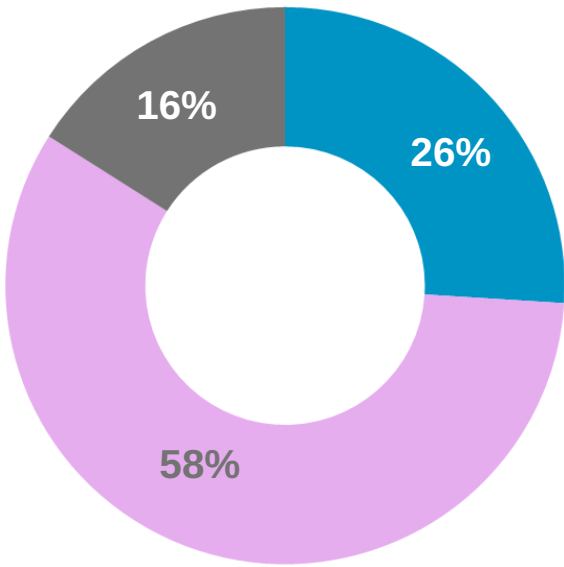
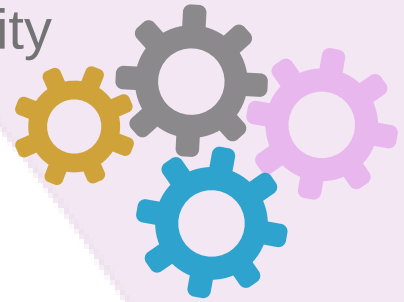


“ I work with a very specific group and so I have learned more about the needs of others e.g. those with disabilities ”



# 84%

Respondents said it had increased their knowledge of the availability of services in the locality



- Strongly Agree
- Agree
- Neither Agree/Disagree

“ Hope that this work continues to act as a catalyst for opportunities for collaborations and better ways of working to benefit children and their families. ”

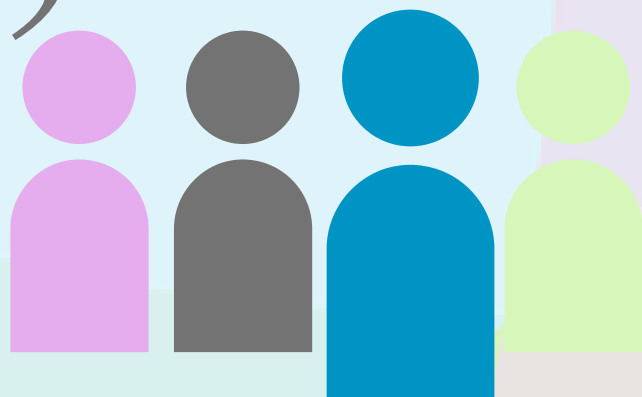
# 56%

LPG respondents said it led to greater involvement of service users and the wider community in addressing planning needs

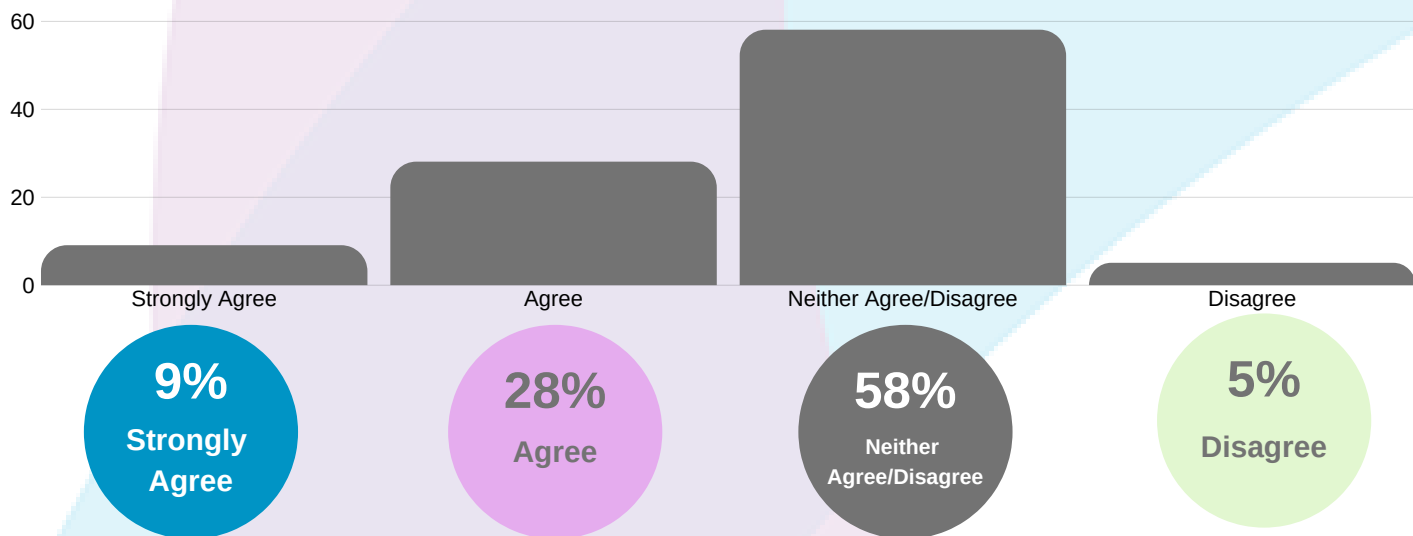
“

Some of the members of the LPG are and have been service users themselves this results in good involvement of service users in the process.

”



**37%** Respondents said it had reduced the likelihood of duplication of service provision in the locality



**74%**

Respondents said LPGs increased the likelihood of improved outcomes for children and families

“ Working together can only improve the likelihood of positive outcomes for children and families ”



**79%**

Respondents felt that the geographical area covered by the Locality Planning Group they attend is the right fit